

Joint WMO/IOC Technical Commission for
Oceanography - Ship Observation Team

End-to-end report of the ASAP data dissemination performance

April to June 2010

1. Introduction

Météo-France is in charge of a end-to-end report of the ASAP data dissemination performance.

The matter of this paper is to evaluate the results of the three last months (April 2010 – June 2010).

2. Information available at Météo-France

TEMP-SHIP messages are received at LFPW (Toulouse) from EGRR (Exeter), EDZW (Offenbach) and Email.

The following information is available :

Reception at LFPW	Broadcast by LFPW
Call sign	Call sign
Header	Channel
Channel	Broadcast date
Reception date	Time lapse
Size	Broadcast size
Format	Recipient
Error	
Operator	

3. List of call signs available

Country	Call sign	Country	Call sign
Denmark	ASDK01	Japan	JCCX
	ASDK02		JGQH
	ASDK3		JIVB
E-ASAP	ASEU01		JDWX
	ASEU02		JNSR
	ASEU03	Norway	LDWR
	ASEU04	South Africa	ZSAF
	ASEU05	Spain	ASES01
France	ASFR1	United Kingdom	ASGB01
	ASFR2	USA	WTEC
	ASFR3	Iceland	ASIS01
	ASFR4	Australia	3FPI7
Germany	ASDE01		
	ASDE02		
	ASDE03		
	ASDE04	Test	SHIP
	DBLK		ASDE09
	DFCG		

4. Origin of the messages

Call sign	Offenbach	Exeter	Telex	Email	Mariner	Supervis	X25
ASEU01	208	0	0	0	0	0	0
ASEU02	287	0	0	0	0	0	0
ASEU03	262	0	0	0	0	0	0
ASEU04	278	0	0	0	0	0	0
ASEU05	302	0	0	0	0	0	0
ASDE01	428	0	0	0	0	0	0
ASDE02	253	0	0	0	0	0	0
ASDE03	378	0	0	0	0	0	0
ASDE04	320	0	0	0	0	0	0
DBLK	217	0	0	0	0	0	0
ASGB01	236	0	0	0	0	0	0
ASDK01	344	0	0	0	0	0	0
ASDK02	346	0	0	0	0	0	0
ASDK3	181	0	0	0	0	0	0
ASES01	0	0	0	147	0	0	0
ASFR1	0	0	0	144	0	0	0
ASFR2	0	0	0	307	0	0	0
ASFR3	0	0	0	105	0	0	0
ASFR4	0	0	0	132	0	0	0
JGQH	0	42	0	0	0	0	0
JNSR	0	1399	0	0	0	0	0
Wrong or strange call-sign							
ASDE09	14	0	0	0	0	0	0
OFF	1	0	0	0	0	0	0
XXXXX	157	731	0	51	0	0	1

Mariner: French navy military sounding
 Supervis: handled by operator

5. Global system performance

Month	Origin	Nb of messages received	Nb of messages in error	Percentage of messages in error	Nb of messages with operator action	Percentage of messages with operator action
2010-Apr	Offenbach	1399	0	0		
	Exeter	248	0	0		
	Telex	0	not relevant	not relevant		
	Email	329	not relevant	not relevant		
	Mariner	0	not relevant	not relevant		
	X25	0	not relevant	not relevant		
	Supervis	0	0	not relevant		
	Total	1647	0	0	0	0
2010-May	Offenbach	1513	4	0,26		
	Exeter	902	0	0		
	Telex	0	not relevant	not relevant		
	Email	350	not relevant	not relevant		
	Mariner	0	not relevant	not relevant		
	X25	1	not relevant	not relevant		
	Supervis	0	0	not relevant		
	Total	2415	4	0,17	0	0
2010-Jun	Offenbach	1300	0	0		
	Exeter	1022	3	0,29		
	Telex	0	not relevant	not relevant		
	Email	207	not relevant	not relevant		
	Mariner	0	not relevant	not relevant		
	X25	0	not relevant	not relevant		
	Supervis	0	0	not relevant		
	Total	2322	3	0,13	0	0
Total	Offenbach	4212	4	0,09		
	Exeter	2172	3	0,14		
	Telex	0	0	not relevant		
	Email	886	886	100		
	Mariner	0	not relevant	not relevant		
	X25	1	not relevant	not relevant		
	Supervis	0	0	not relevant		
	Total	7271	7	0,11	0	0

Remark: Email messages were excluded from the number of messages in error and from the relative percentage as values are regarded as not relevant. Not relevant percentages are due to not relevant values or to a total amount of data equal to zero.

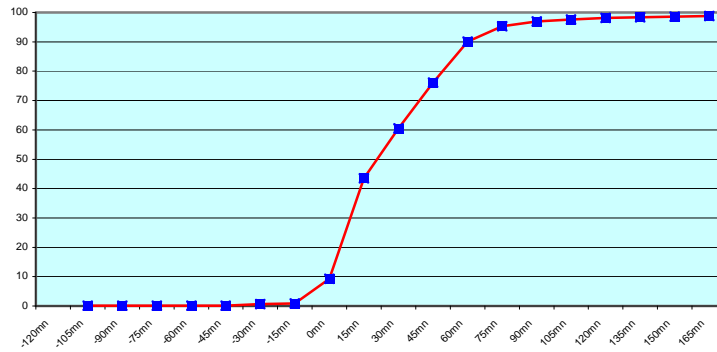
6. Global result of the syntactic check for the messages for each call sign.

Call sign	Nb of messages recieved	Nb of messages in error	Percentage of messages in error	Nb of messages with operator action	Percentage of messages with operator action
ASEU01	208	0	0	0	0
ASEU02	287	0	0	0	0
ASEU03	262	0	0	0	0
ASEU04	278	0	0	0	0
ASEU05	302	0	0	0	0
ASDE01	428	0	0	0	0
ASDE02	253	0	0	0	0
ASDE03	378	0	0	0	0
ASDE04	320	0	0	0	0
DBLK	217	0	0	0	0
ASGB01	236	0	0	0	0
ASDK01	344	0	0	0	0
ASDK02	346	0	0	0	0
ASDK3	181	4	2,21	0	0
ASES01	147	0	0	0	0
ASFR1	144	0	0	0	0
ASFR3	105	0	0	0	0
ASFR4	132	0	0	0	0
ASFR2	307	0	0	0	0
JGQH	42	0	0	0	0
JNSR	1399	0	0	0	0
Wrong or strange call-sign					
ASDE09	14	0	0	0	0
OFF	1	0	0	0	0
XXXXX	940	3	0,32	0	0

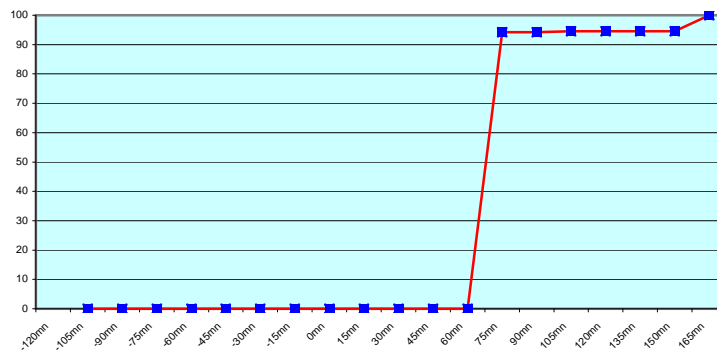
Remark: Data transmitted through email displayed an error rate close to 100% due to email syntax and were thus regarded as not relevant and excluded from errors total amount.

7. Mean time before the integration of the messages in the GTS in Toulouse. HH is the synoptic hour of reference.

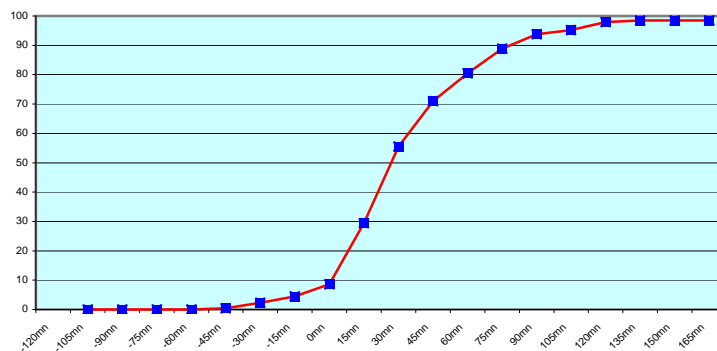
OFF (4212 report parts)



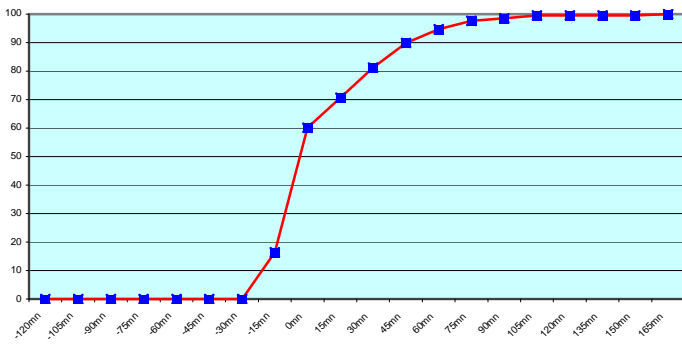
BRK (773 report parts)



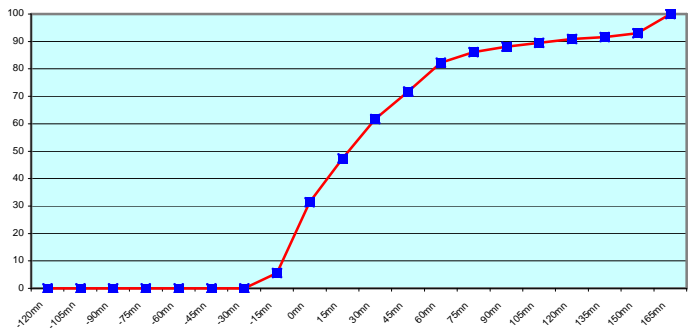
EMAIL (886 report parts)



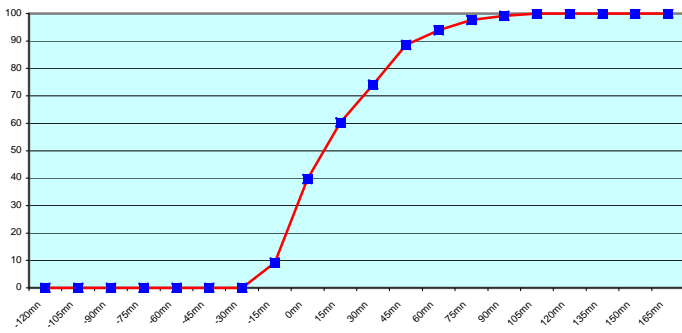
ASEU01 (208 report parts) Offenbach 208



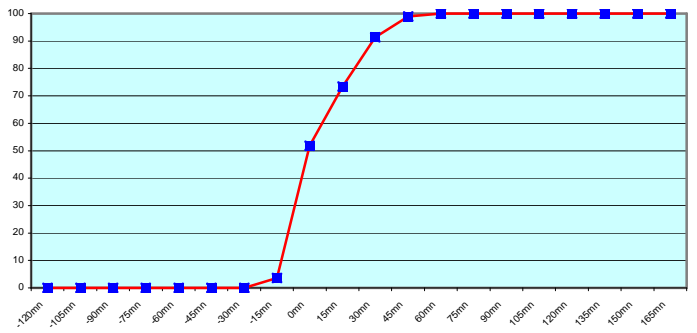
ASEU02 (287 report parts) Offenbach 287



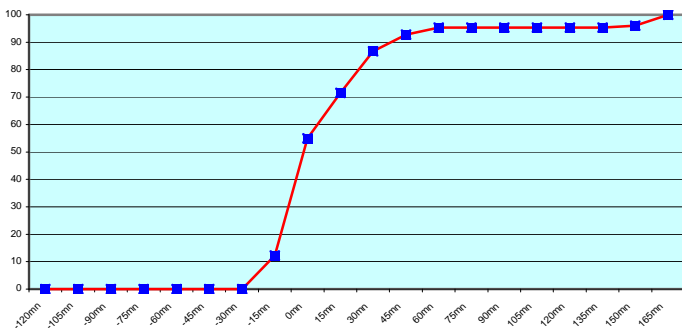
ASEU03 (262 report parts) Offenbach 262



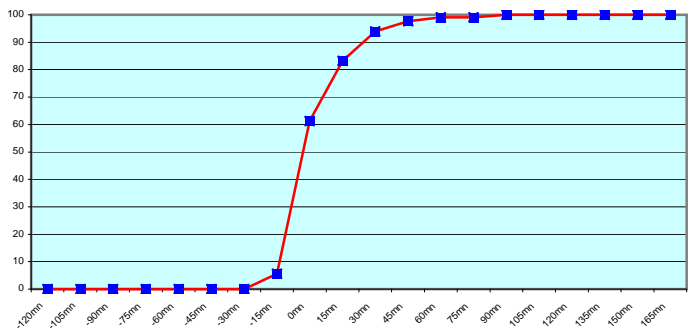
ASEU04 (278 report parts) Offenbach 278



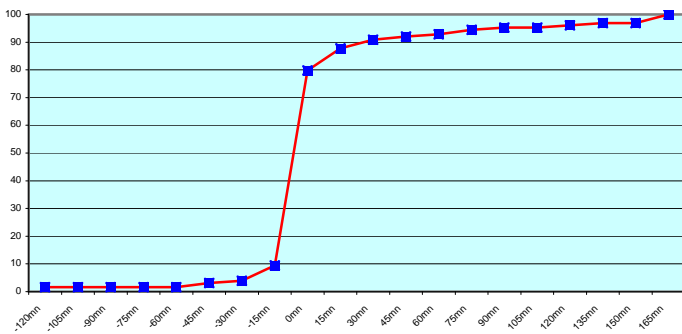
ASEU05 (302 report parts) Offenbach 302



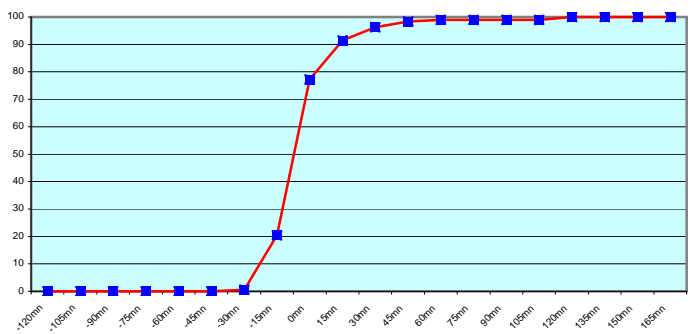
ASDE01 (428 report parts) Offenbach 428



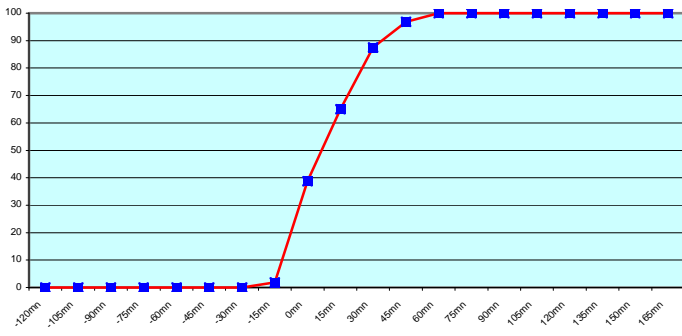
ASDE02 (253 report parts) Offenbach 253



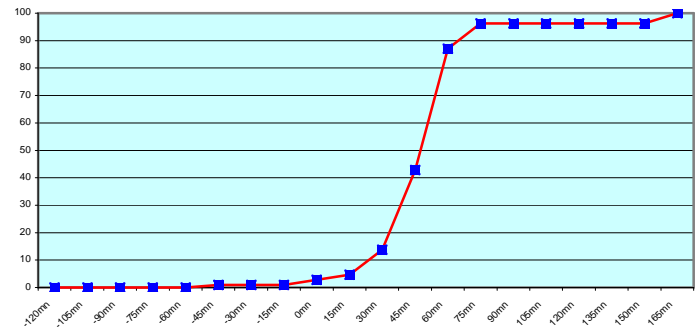
ASDE03 (378 report parts) Offenbach 378



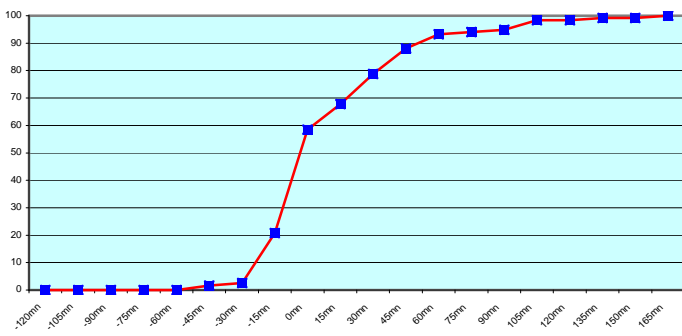
ASDE04 (320 report parts) Offenbach 320



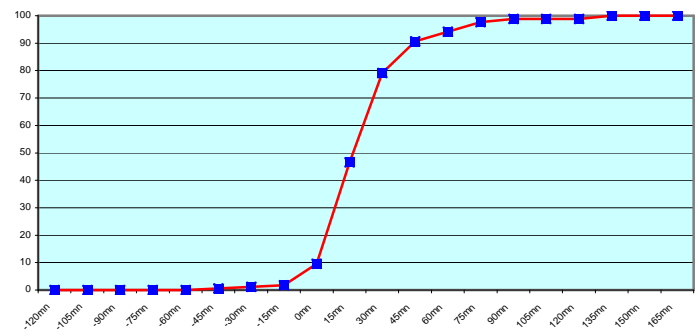
DBLK (217 report parts) Offenbach 217



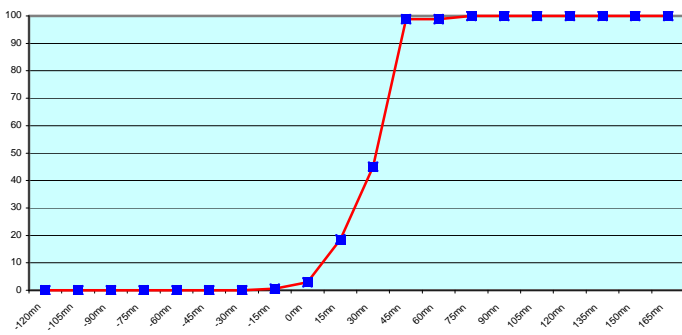
ASGB01 (236 report parts) Offenbach 236



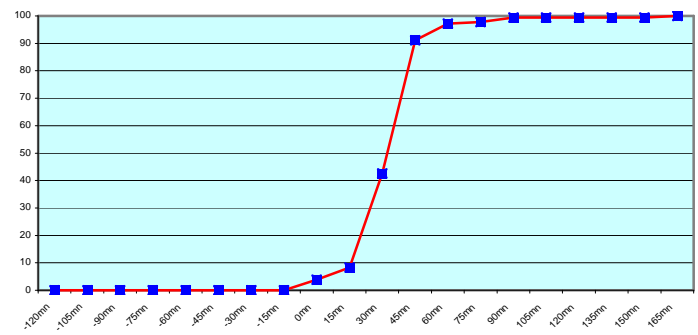
ASDK01 (344 report parts) Offenbach 344



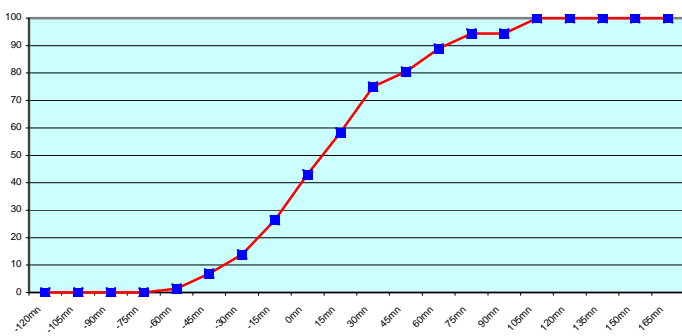
ASDK02 (346 report parts) Offenbach 346



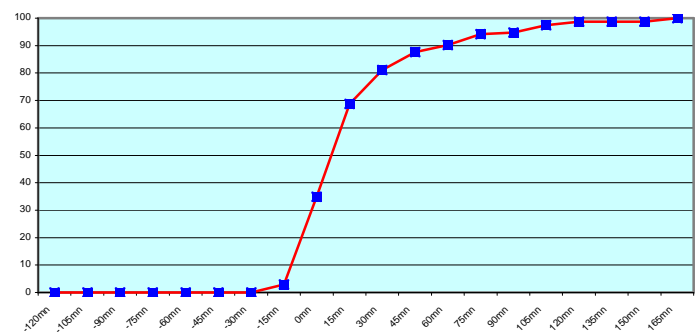
ASDK3 (181 report parts) Offenbach 181



ASFR1 (144 report parts) Email 144

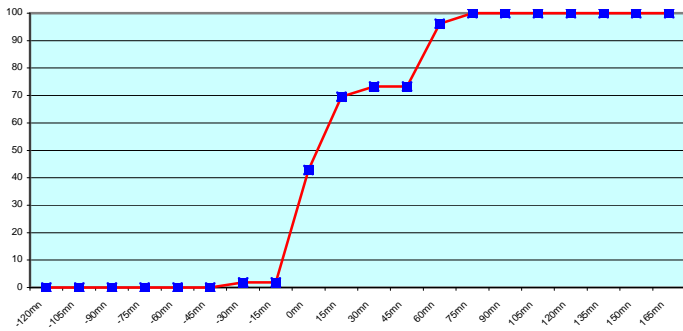


ASFR2 (307 report parts) Email 307

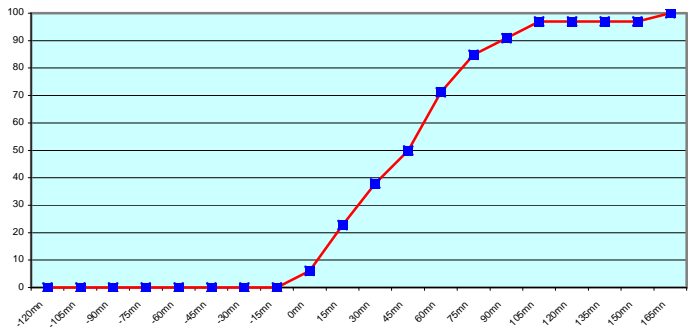




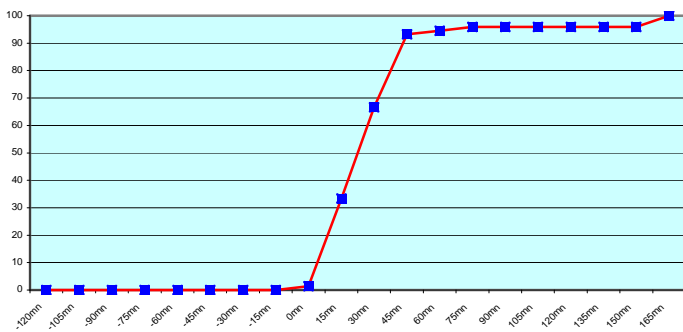
ASFR3 (105 report parts) Email 105



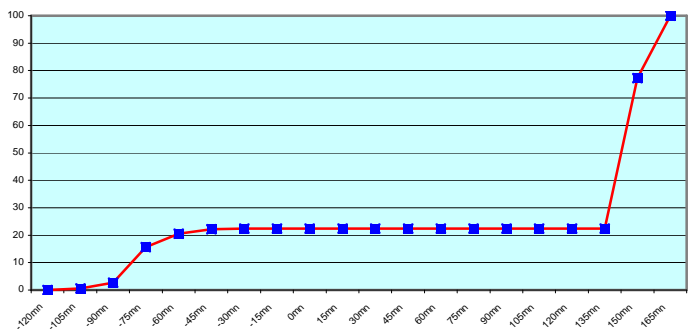
ASFR4 (132 report parts) Email 132



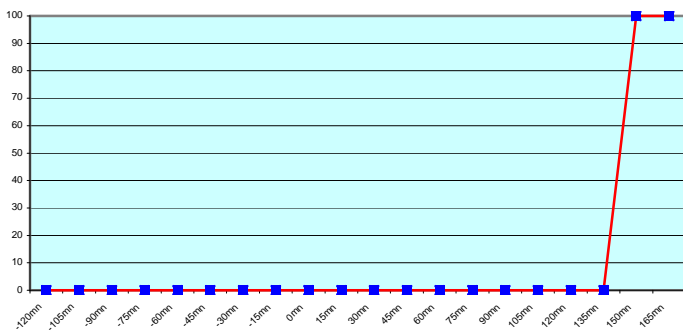
ASES01 (147 report parts) Email 147



JNSR (1399 report parts) Exeter 1399



JGQH (42 report parts) Exeter 42



During the three last months, three French ships (ASFR1, ASFR3 and ASFR4) had some problems with the transmission devices. Some messages were lost and others delayed.

Japanese ships follow a different procedure with an important shift between the sending of the message and the synoptic hour. By consequence, we excluded these ships to the Exeter graph.

For any comment or remark please contact Météo-France Toulouse DSO/DOA department
 Gérard Rey (gerard.rey@meteo.fr)
 Daniel Bouchara (daniel.bouchara@meteo.fr)
 Hugues Jardat (hugues.jardat@meteo.fr)