

Joint WMO/IOC Technical Commission for
Oceanography - Ship Observation Team

End-to-end report of the ASAP data dissemination performance

January to March 2010

1. Introduction

Météo-France is in charge of a end-to-end report of the ASAP data dissemination performance.

The matter of this paper is to evaluate the results of the three last months (January 2010 – March 2010).

2. Information available at Météo-France

TEMP-SHIP messages are received at LFPW (Toulouse) from EGRR (Exeter), EDZW (Offenbach) and Email.

The following information is available :

Reception at LFPW	Broadcast by LFPW
Call sign	Call sign
Header	Channel
Channel	Broadcast date
Reception date	Time lapse
Size	Broadcast size
Format	Recipient
Error	
Operator	

3. List of call signs available

Country	Call sign	Country	Call sign
Denmark	ASDK01	Japan	JCCX
	ASDK02		JGQH
	ASDK3		JIVB
E-ASAP	ASEU01		JDWX
	ASEU02		JNSR
	ASEU03	Norway	LDWR
	ASEU04	South Africa	ZSAF
	ASEU05	Spain	ASES01
France	ASFR1	United Kingdom	ASGB01
	ASFR2	USA	WTEC
	ASFR3	Iceland	ASIS01
	ASFR4	Australia	3FPI7
Germany	ASDE01		
	ASDE02		
	ASDE03		
	ASDE04	Test	SHIP
	DBLK		ASDE09
	DFCG		

4. Origin of the messages

Call sign	Offenbach	Exeter	Telex	Email	Mariner	Supervis	X25
ASEU01	276	0	0	0	0	0	0
ASEU02	238	0	0	0	0	0	0
ASEU03	244	0	0	0	0	0	0
ASEU04	334	0	0	0	0	0	0
ASEU05	314	0	0	0	0	0	0
ASDE01	277	0	0	0	0	0	0
ASDE02	276	0	0	0	0	0	0
ASDE03	336	0	0	0	0	0	0
ASDE04	212	0	0	0	0	0	0
DBLK	464	0	0	0	0	0	0
ASGB01	112	0	0	0	0	0	0
ASDK01	348	0	0	0	0	0	0
ASDK02	271	0	0	0	0	0	0
ASDK3	197	0	0	0	0	0	0
ASES01	0	0	0	116	0	0	0
ASFR1	0	0	0	202	0	0	0
ASFR2	0	0	0	279	0	0	0
ASFR3	0	0	0	113	0	0	0
ASFR4	0	0	0	81	0	1	0
ASIS01	6	0	0	0	0	0	0
JGQH	0	74	0	0	0	0	0
JDWX	0	8	0	0	0	0	0
Wrong or strange call-sign							
FQWZ	0	0	0	2	0	0	0
XXXXX	174	672	0	52	0	0	0
numer.	1	0	0	1	0	0	0

Mariner: French navy military sounding

Supervis: handled by operator

5. Global system performance

Month	Origin	Nb of messages received	Nb of messages in error	Percentage of messages in error	Nb of messages with operator action	Percentage of messages with operator action
2009-Jan	Offenbach	1474	1	0,07		
	Exeter	318	0	0		
	Telex	0	not relevant	not relevant		
	Email	221	not relevant	not relevant		
	Mariner	0	not relevant	not relevant		
	X25	0	not relevant	not relevant		
	Supervis	0	0	not relevant		
	Total	1792	1	0,06	0	0
2009-Feb	Offenbach	1224	0	0		
	Exeter	188	0	0		
	Telex	0	not relevant	not relevant		
	Email	266	not relevant	not relevant		
	Mariner	0	not relevant	not relevant		
	X25	0	not relevant	not relevant		
	Supervis	1	0	0		
	Total	1412	0	0	1	0,07
2009-Mar	Offenbach	1382	0	0		
	Exeter	248	0	0		
	Telex	0	not relevant	not relevant		
	Email	359	not relevant	not relevant		
	Mariner	0	not relevant	not relevant		
	X25	0	not relevant	not relevant		
	Supervis	0	0	not relevant		
	Total	1630	0	0	0	0
Total	Offenbach	4080	1	0,02		
	Exeter	754	0	0		
	Telex	0	0	not relevant		
	Email	846	846	100		
	Mariner	0	not relevant	not relevant		
	X25	0	not relevant	not relevant		
	Supervis	1	0	0		
	Total	5681	1	0,02	1	0,02

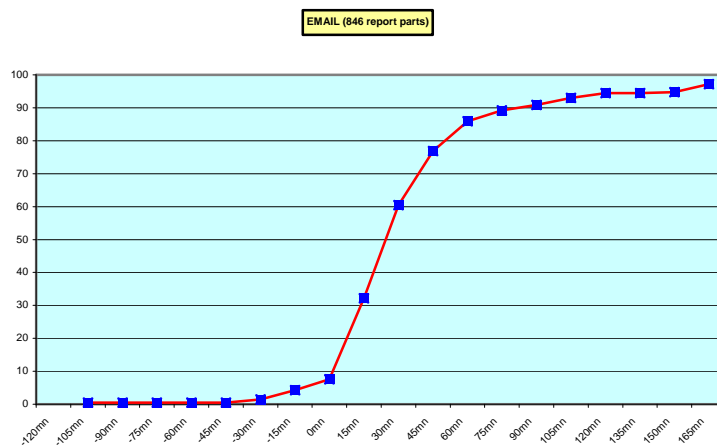
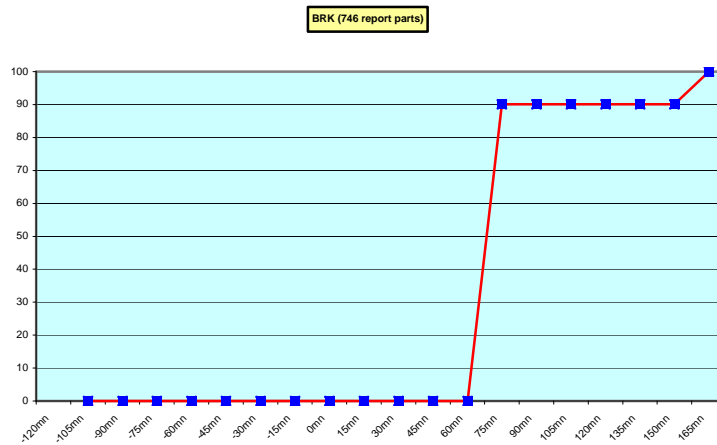
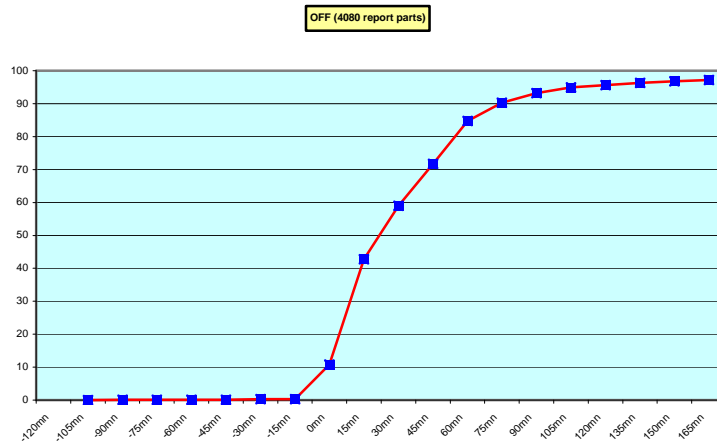
Remark: Email messages were excluded from the number of messages in error and from the relative percentage as values are regarded as not relevant. Not relevant percentages are due to not relevant values or to a total amount of data equal to zero.

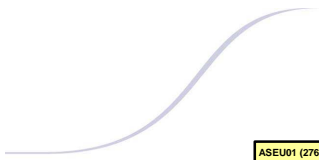
6. Global result of the syntactic check for the messages for each call sign.

Call sign	Nb of messages received	Nb of messages in error	Percentage of messages in error	Nb of messages with operator action	Percentage of messages with operator action
ASEU01	276	0	0	0	0
ASEU02	238	0	0	0	0
ASEU03	244	0	0	0	0
ASEU04	334	0	0	0	0
ASEU05	314	0	0	0	0
ASDE01	277	0	0	0	0
ASDE02	276	1	0,36	0	0
ASDE03	336	0	0	0	0
ASDE04	212	0	0	0	0
DBLK	464	0	0	0	0
ASGB01	112	0	0	0	0
ASDK01	348	0	0	0	0
ASDK02	271	0	0	0	0
ASDK3	197	0	0	0	0
ASES01	116	0	0	0	0
ASFR1	202	0	0	0	0
ASFR2	279	0	0	0	0
ASFR3	113	0	0	0	0
ASFR4	82	0	0	1	1,22
ASIS01	6	0	0	0	0
JGQH	74	0	0	0	0
JDWX	8	0	0	0	0
Wrong or strange call-sign					
FQWZ	2	0	0	0	0
XXXXX	898	0	0	0	0
numer.	2	0	0	0	0

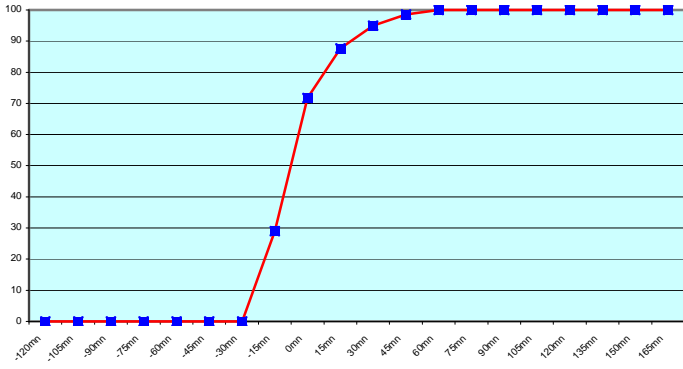
Remark: Data transmitted through email displayed an error rate close to 100% due to email syntax and were thus regarded as not relevant and excluded from errors total amount.

7. Mean time before the integration of the messages in the GTS in Toulouse. HH is the synoptic hour of reference.

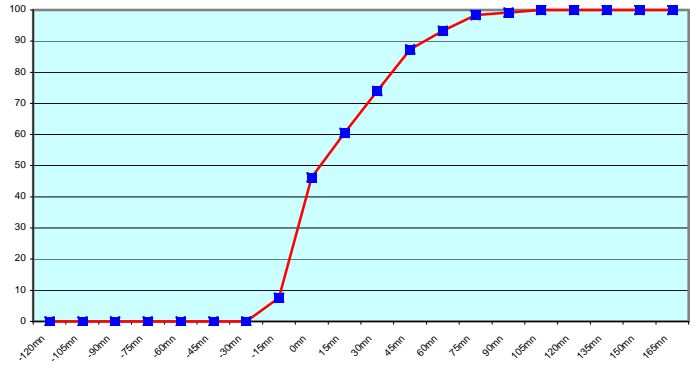




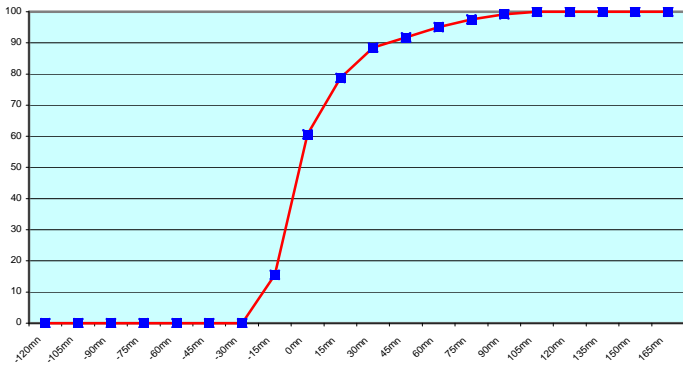
ASEU01 (276 report parts) Offenbach 276



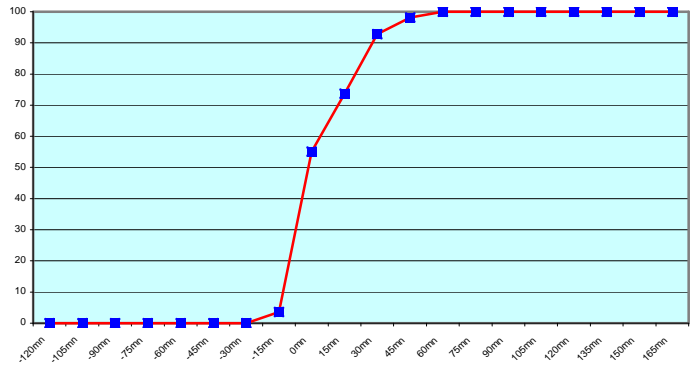
ASEU02 (238 report parts) Offenbach 238



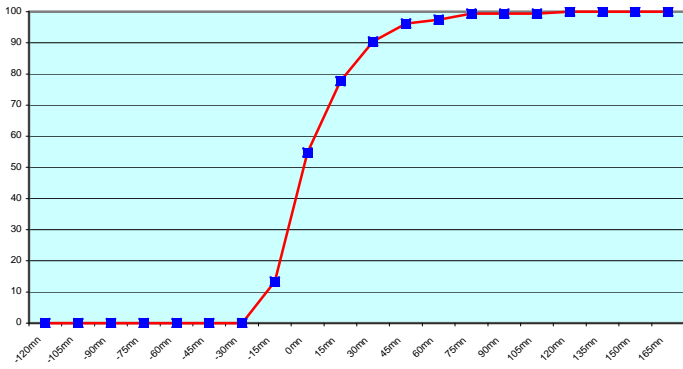
ASEU03 (244 report parts) Offenbach 244



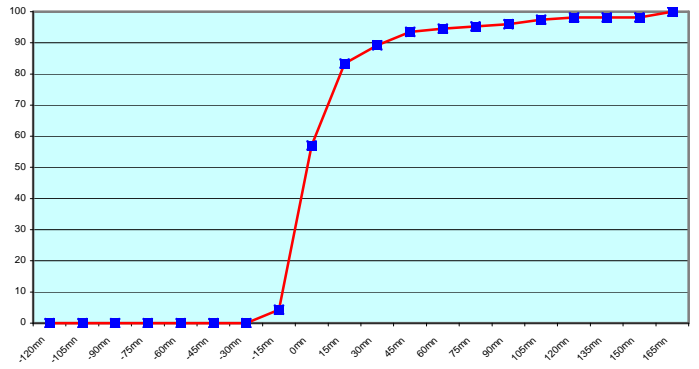
ASEU04 (334 report parts) Offenbach 334

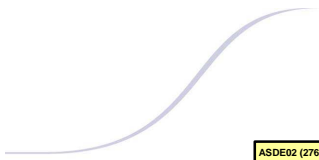


ASEU05 (314 report parts) Offenbach 314

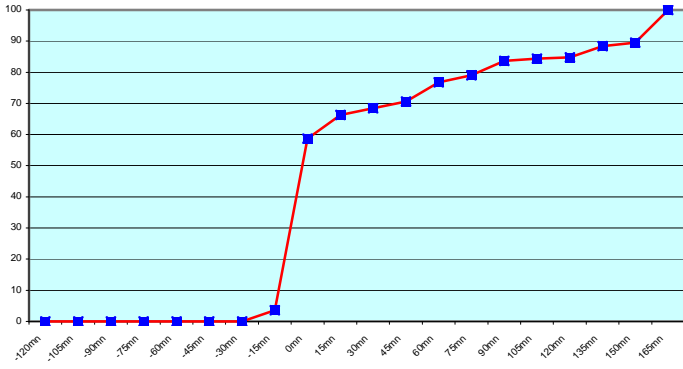


ASDE01 (277 report parts) Offenbach 277

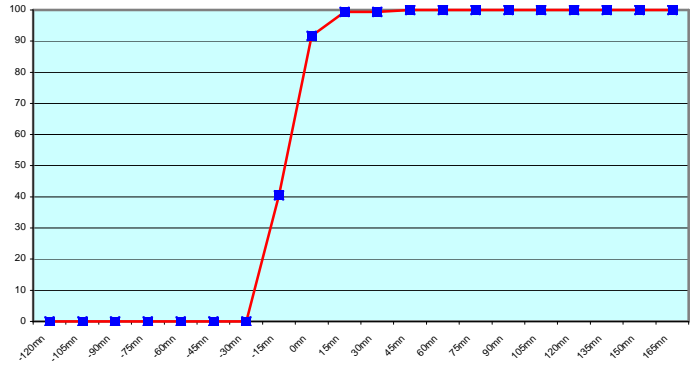




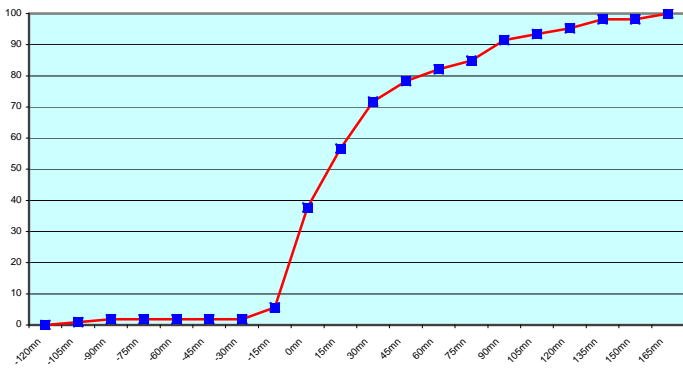
ASDE02 (276 report parts) Offenbach 276



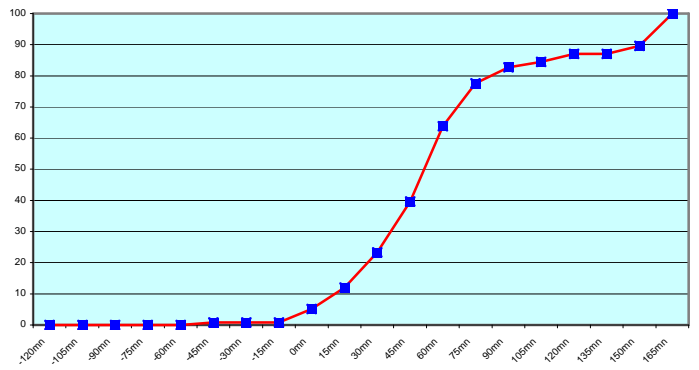
ASDE03 (336 report parts) Offenbach 336



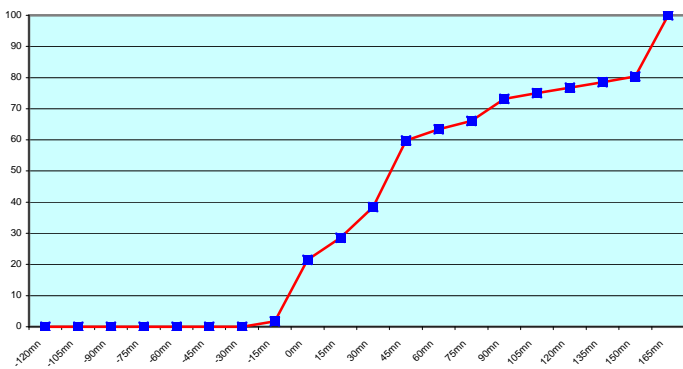
ASDE04 (212 report parts) Offenbach 212



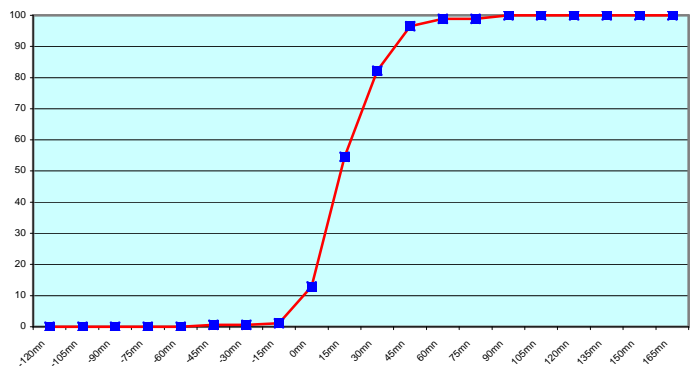
DBLK (464 report parts) Offenbach 464

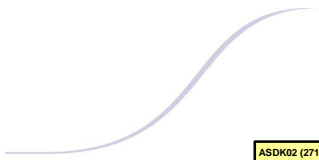


ASGB01 (112 report parts) Offenbach 112

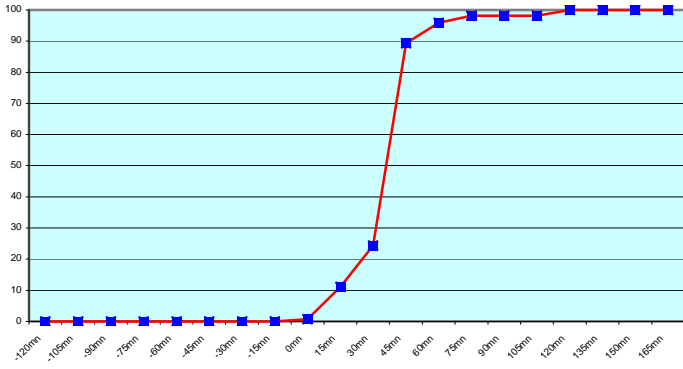


ASDK01 (348 report parts) Offenbach 348

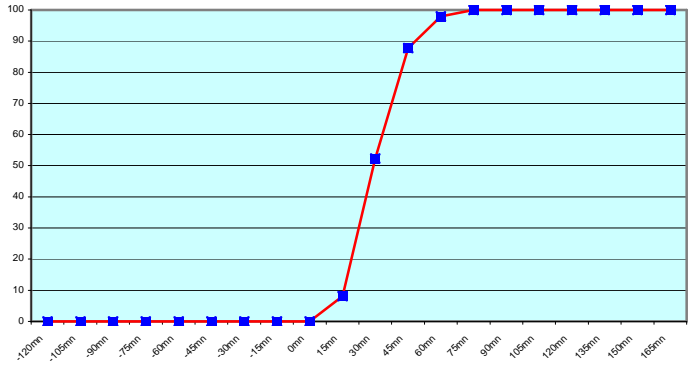




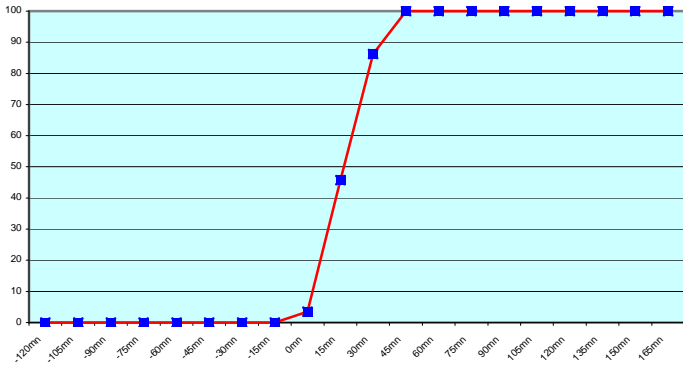
ASDK02 (271 report parts) Offenbach 271



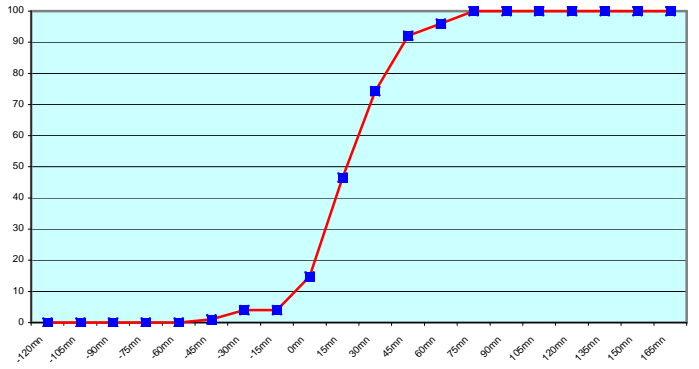
ASDK3 (197 report parts) Offenbach 197



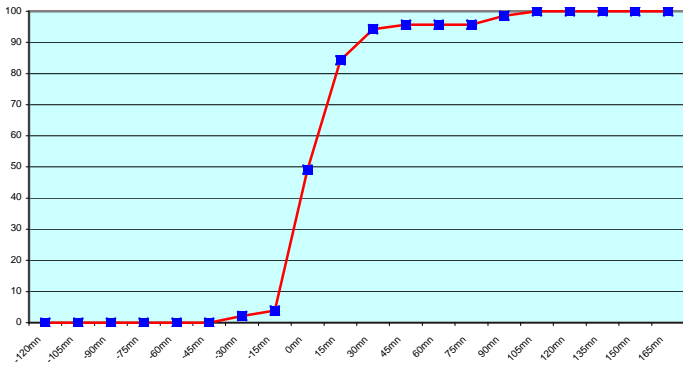
ASES01 (116 report parts) Email 116



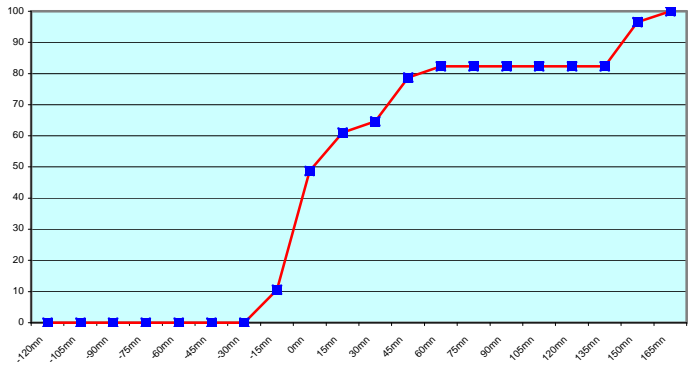
ASFR1 (202 report parts) Email 202



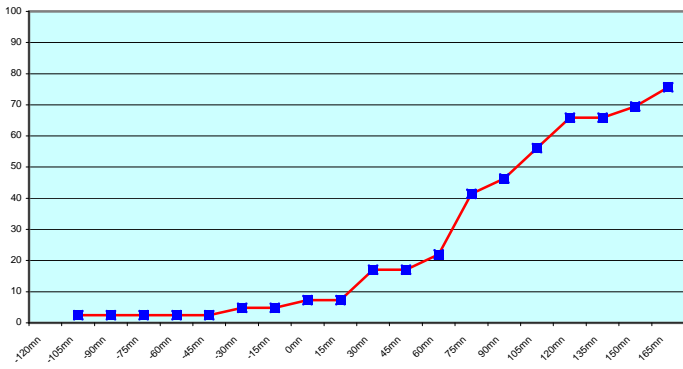
ASFR2 (279 report parts) Email 279



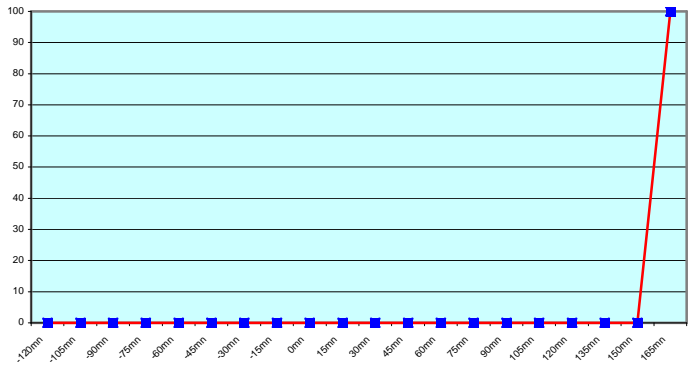
ASFR3 (113 report parts) Email 113



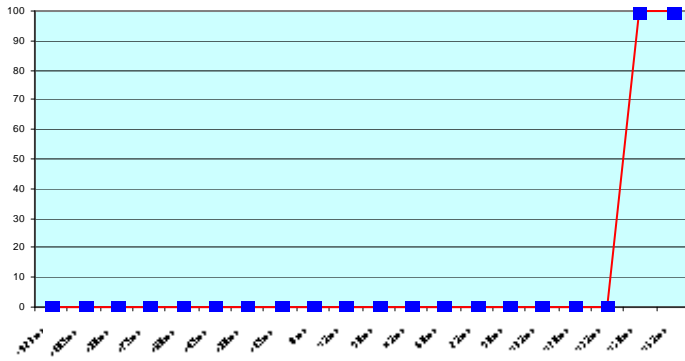
ASFR4 (82 report parts) Email 81 with supervision 1



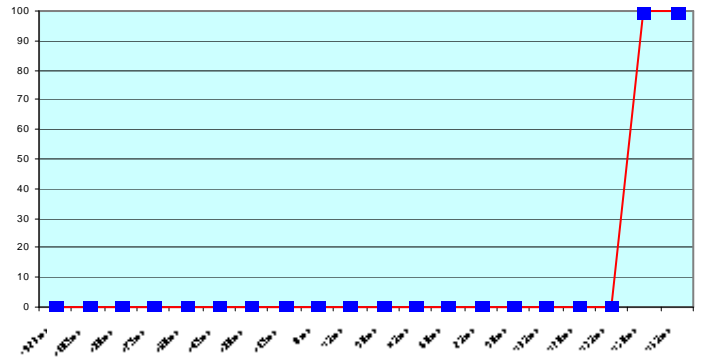
ASIS01 (6 report parts) Offenbach 6



JGQH (74 report parts) Exeter 74



JDWX (8 report parts) Exeter 8



During the three last months, we experienced some problems with the reception of messages from 5 ships: ASDE02, ASDE04, ASGB01, ASFR3 and ASFR4.

ASDE02: There were some problems with the satellite communication when operating from the West African coast. This coincided with observed tropospheric dust from the Sahara.

ASDE04: It turned out that the new operator filled not sufficient helium in the balloons (since 05/March). The ascent rate was only 1.5-2.5 m/s and the flights took very long time.

ASGB01: There were problems with the satcom equipment. The crew was advised to send the data via the ship's email system if there is no satellite communication from the station computer. The problem was fixed last call in Bremerhaven on March 27th by replacing some cables and connectors.

ASFR3 and ASFR4: This delay was due to a misconfiguration in a file used for the TEMP parts transmission. The technical team installed an update version on the ASFR3 on March 25th and plan to install this new version on the ASFR4 as soon as possible.

Japanese ships follow a different procedure with an important shift between the sending of the message and the synoptic hour. By consequence, we excluded these ships to the Exeter graph.

For any comment or remark please contact Météo-France Toulouse DSO/DOA department

Gérard Rey (gerard.rey@meteo.fr)

Daniel Bouchara (daniel.bouchara@meteo.fr)

Hugues Jardat (hugues.jardat@meteo.fr)