

Joint WMO/IOC Technical Commission for  
Oceanography - Ship Observation Team

# **End-to-end report of the ASAP data dissemination performance**

## **October to December 2009**

## 1. Introduction

Météo-France is in charge of a end-to-end report of the ASAP data dissemination performance.

The matter of this paper is to evaluate the results of the three last months (October 2009 – December 2009).

## 2. Information available at Météo-France

TEMP-SHIP messages are received at LFPW (Toulouse) from EGRR (Exeter), EDZW (Offenbach) and Email.

The following information is available :

Reception at LFPW	Broadcast by LFPW
Call sign	Call sign
Header	Channel
Channel	Broadcast date
Reception date	Time lapse
Size	Broadcast size
Format	Recipient
Error	
Operator	

### 3. List of call signs available

<b>Country</b>	<b>Call sign</b>	<b>Country</b>	<b>Call sign</b>
Denmark	ASDK01	Japan	JCCX
	ASDK02		JGQH
	ASDK3		JIVB
E-ASAP	ASEU01		JDWX
	ASEU02		JNSR
	ASEU03	Norway	LDWR
	ASEU04	South Africa	ZSAF
	ASEU05	Spain	ASES01
France	ASFR1	United Kingdom	ASGB01
	ASFR2	USA	WTEC
Germany	ASDE01	Iceland	ASIS01
	ASDE02	Australia	3FPI7
	ASDE03		
	ASDE04	Test	SHIP
	DBLK		ASDE09
	DFCG		

#### 4. Origin of the messages

Call sign	Offenbach	Exeter	Telex	Email	Mariner	Supervis	X25
ASEU01	516	0	0	0	0	0	0
ASEU02	350	0	0	0	0	0	0
ASEU03	82	0	0	0	0	0	0
ASEU04	310	0	0	0	0	0	0
ASEU05	410	0	0	0	0	0	0
ASDE01	344	0	0	0	0	0	0
ASDE02	360	0	0	0	0	0	0
ASDE03	360	0	0	0	0	0	0
ASDE04	404	0	0	0	0	0	0
DBLK	258	0	0	0	0	0	0
DFCG	209	0	0	0	0	0	0
ASGB01	179	0	0	0	0	0	0
ASDK01	421	277	0	0	0	0	0
ASDK02	279	0	0	0	0	0	0
ASDK3	348	0	0	0	0	0	0
ASES01	0	0	0	53	0	0	0
ASFR1	0	0	0	232	0	4	0
ASFR2	0	0	0	260	0	0	0
LDWR	880	0	0	0	0	0	0
JCCX	0	11	0	0	0	0	0
JGQH	0	91	0	0	0	0	0
JDWX	0	38	0	0	0	0	0
JNSR	0	193	0	0	0	0	0
Test							
ASDE09	10	0	0	0	0	0	0
Wrong or strange call-sign							
XXXXX	273	735	0	93	0	0	0
numer.	4	0	0	23	0	0	0

Mariner: French navy military sounding  
 Supervis: handled by operator

## 5. Global system performance

Month	Origin	Nb of messages received	Nb of messages in error	Percentage of messages in error	Nb of messages with operator action	Percentage of messages with operator action
2009-Oct	Offenbach	2195	0	0		
	Exeter	655	0	0		
	Telex	0	not relevant	not relevant		
	Email	227	not relevant	not relevant		
	Mariner	0	not relevant	not relevant		
	X25	0	not relevant	not relevant		
	Supervis	4	3	75		
	Total	2850	0	0	4	0,14
2009-Nov	Offenbach	2049	0	0		
	Exeter	442	4	0,9		
	Telex	0	not relevant	not relevant		
	Email	245	not relevant	not relevant		
	Mariner	0	not relevant	not relevant		
	X25	0	not relevant	not relevant		
	Supervis	0	0	not relevant		
	Total	2491	4	0,16	0	0
2009-Dec	Offenbach	1753	0	0		
	Exeter	248	0	0		
	Telex	0	not relevant	not relevant		
	Email	189	not relevant	not relevant		
	Mariner	0	not relevant	not relevant		
	X25	0	not relevant	not relevant		
	Supervis	0	0	not relevant		
	Total	2001	0	0	0	0
Total	Offenbach	5997	0	0		
	Exeter	1345	4	0,3		
	Telex	0	0	not relevant		
	Email	661	661	100		
	Mariner	0	not relevant	not relevant		
	X25	0	not relevant	not relevant		
	Supervis	4	3	75		
	Total	8007	4	0,05	4	0,05

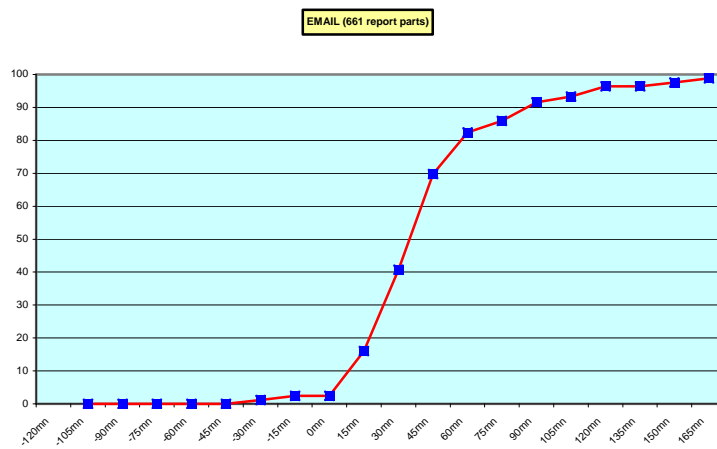
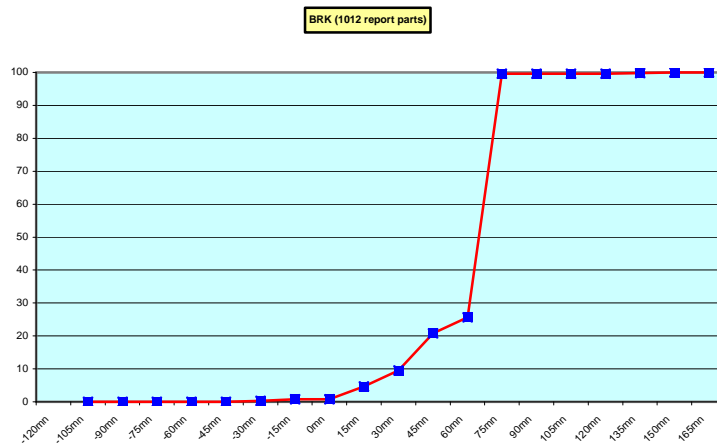
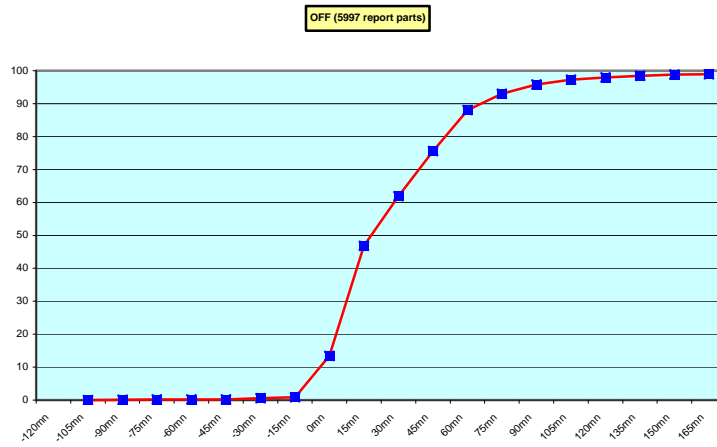
**Remark:** Email messages were excluded from the number of messages in error and from the relative percentage as values are regarded as not relevant. Not relevant percentages are due to not relevant values or to a total amount of data equal to zero.

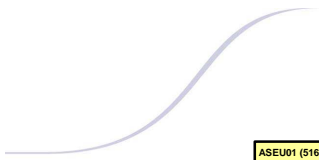
## 6. Global result of the syntactic check for the messages for each call sign.

Call sign	Nb of messages received	Nb of messages in error	Percentage of messages in error	Nb of messages with operator action	Percentage of messages with operator action
ASEU01	516	0	0	0	0
ASEU02	350	0	0	0	0
ASEU03	82	0	0	0	0
ASEU04	310	0	0	0	0
ASEU05	410	0	0	0	0
ASDE01	344	0	0	0	0
ASDE02	360	0	0	0	0
ASDE03	360	0	0	0	0
ASDE04	404	0	0	0	0
DBLK	258	0	0	0	0
DFCG	209	0	0	0	0
ASGB01	179	0	0	0	0
ASDK01	698	2	0,29	0	0
ASDK02	279	0	0	0	0
ASDK3	348	0	0	0	0
ASES01	53	0	0	0	0
ASFR1	236	3	1,27	4	1,69
ASFR2	260	0	0	0	0
LDWR	880	0	0	0	0
JCCX	11	0	0	0	0
JGQH	91	0	0	0	0
JDWX	38	0	0	0	0
JNSR	193	0	0	0	0
Test					
ASDE09	10	0	0	0	0
Wrong or strange call-sign					
XXXXX	1101	2	0,18	0	0
numer.	27	0	0	0	0

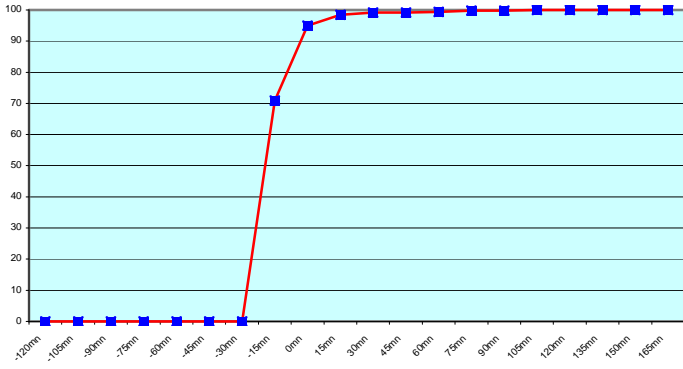
**Remark:** Data transmitted through email displayed an error rate close to 100% due to email syntax and were thus regarded as not relevant and excluded from errors total amount.

7. Mean time before the integration of the messages in the GTS in Toulouse. HH is the synoptic hour of reference.

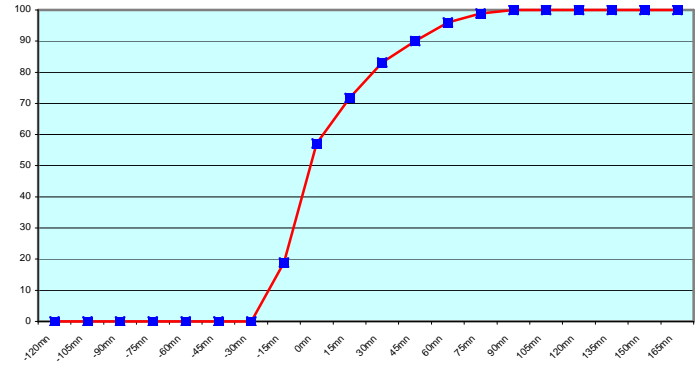




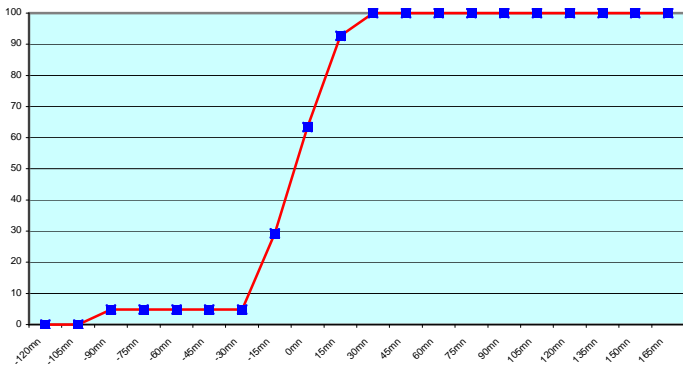
ASEU01 (516 report parts) Offenbach 516



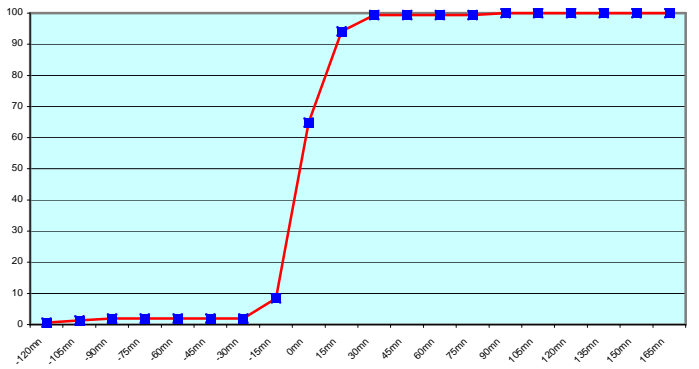
ASEU02 (350 report parts) Offenbach 350



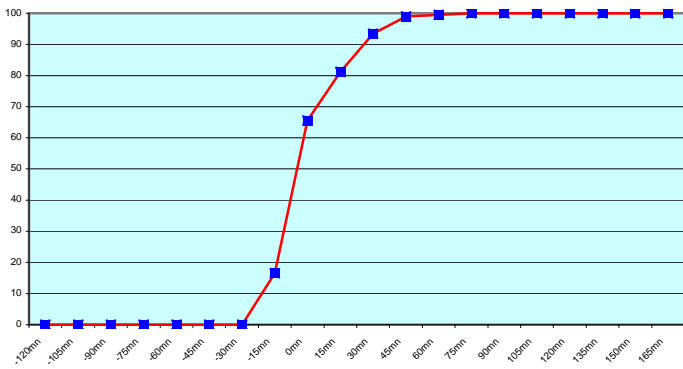
ASEU03 (82 report parts) Offenbach 82



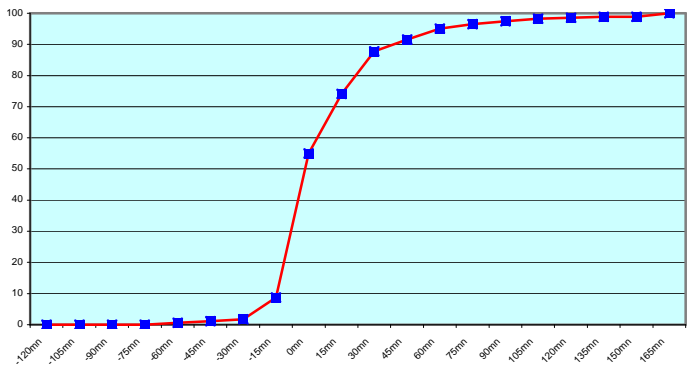
ASEU04 (310 report parts) Offenbach 310



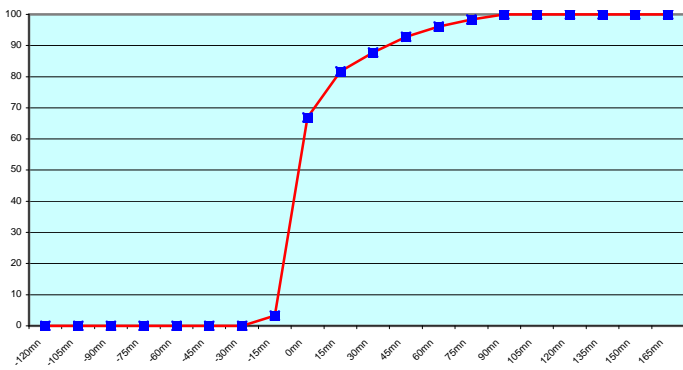
ASEU05 (410 report parts) Offenbach 410



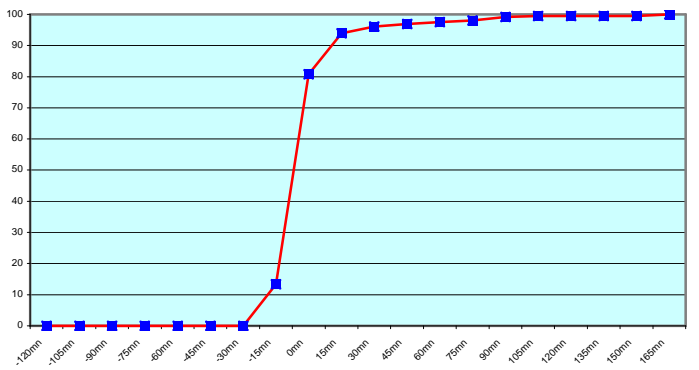
ASDE01 (344 report parts) Offenbach 344



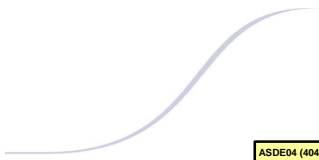
ASDE02 (360 report parts) Offenbach 360



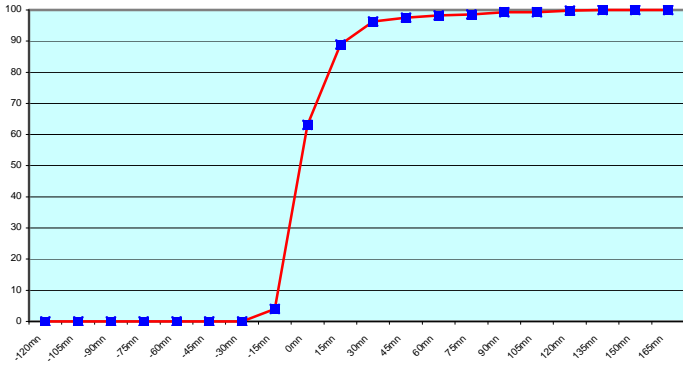
ASDE03 (360 report parts) Offenbach 360



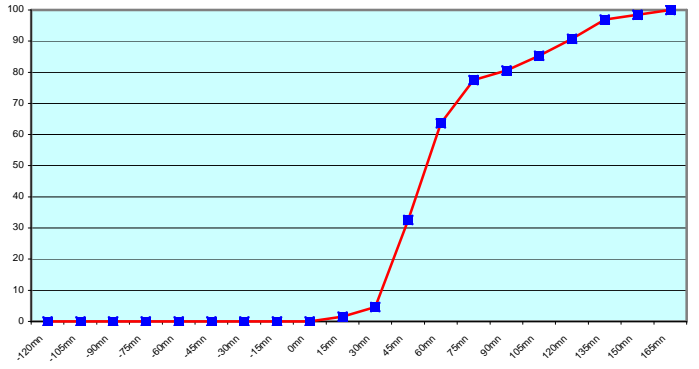




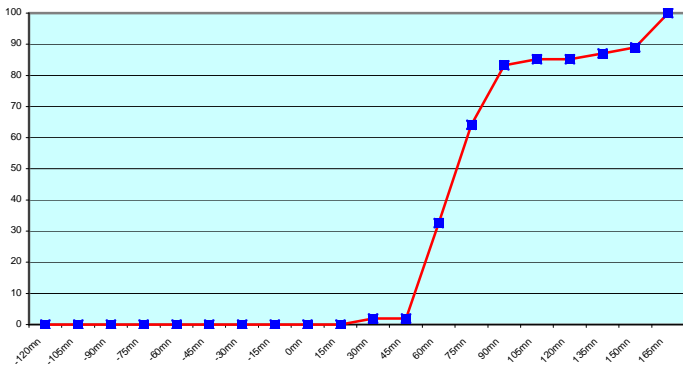
ASDE04 (404 report parts) Offenbach 404



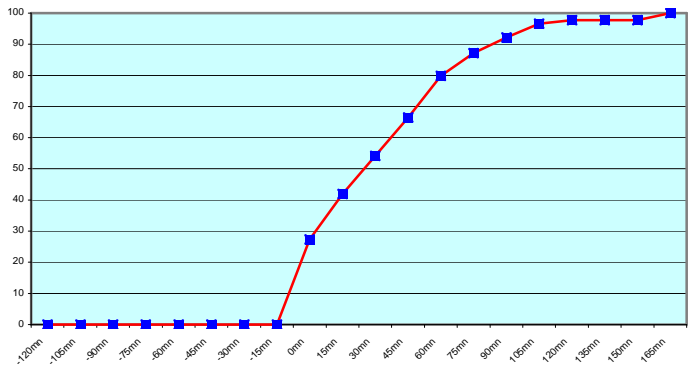
DBLK (258 report parts) Offenbach 258



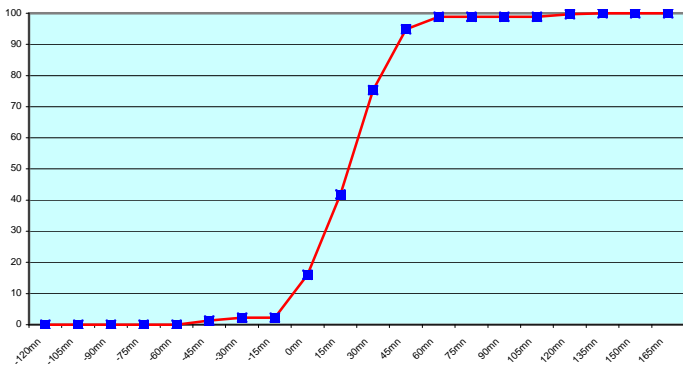
DFCG (209 report parts) Offenbach 209



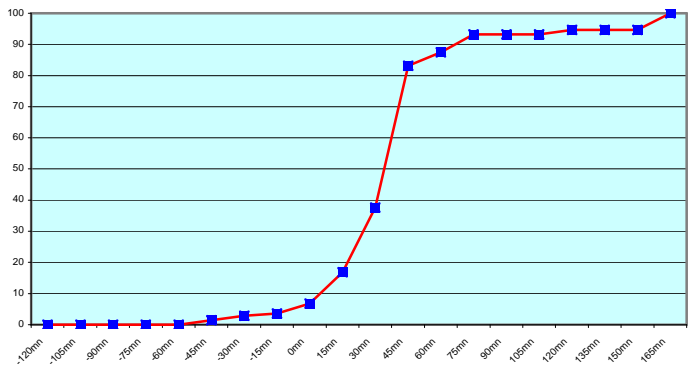
ASGB01 (179 report parts) Offenbach 179



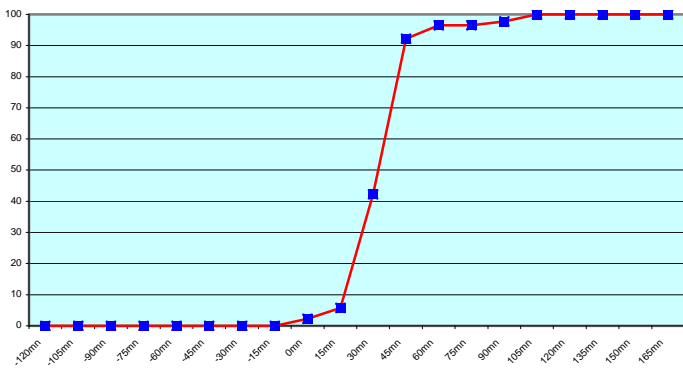
ASDK01 (698 report parts) Offenbach 421 Exeter 277



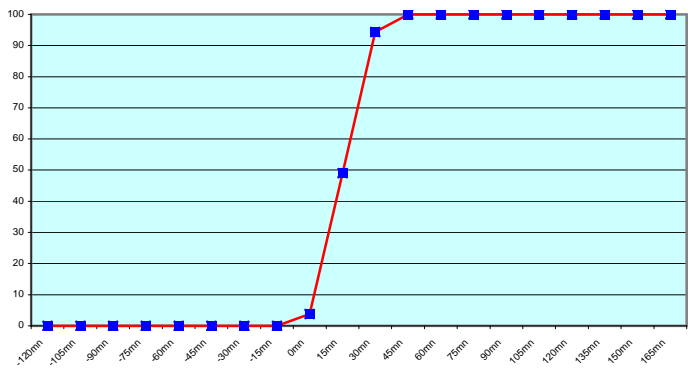
ASDK02 (279 report parts) Offenbach 279

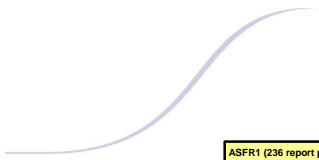


ASDK3 (348 report parts) Offenbach 348

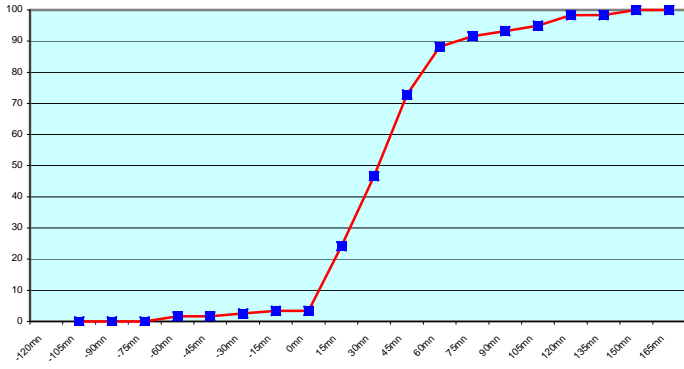


ASES01 (53 report parts) Email 53

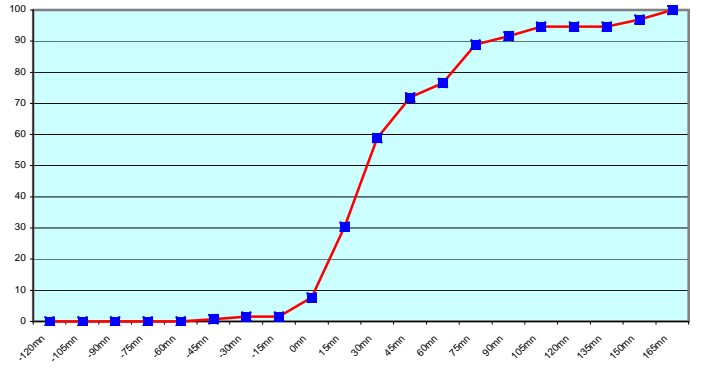




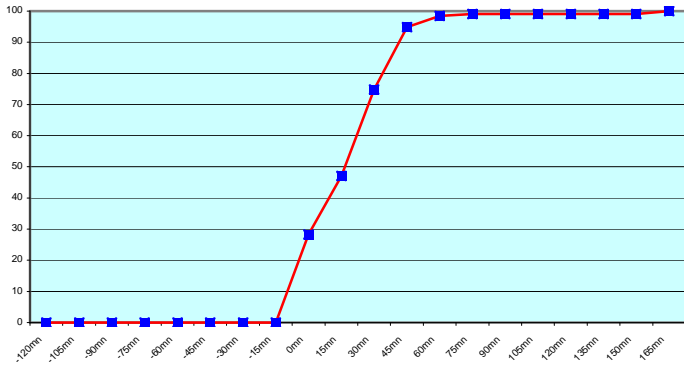
ASFR1 (236 report parts) Email 232 with supervision 4



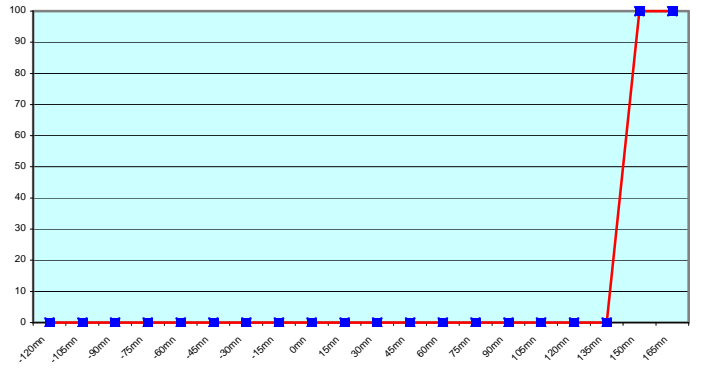
ASFR2 (260 report parts) Email 260



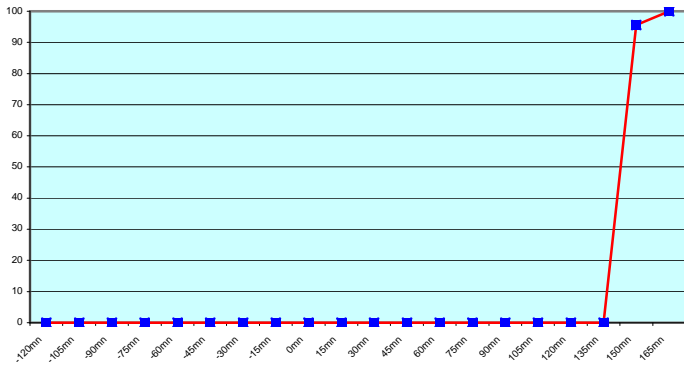
LDWR (880 report parts) Offenbach 880



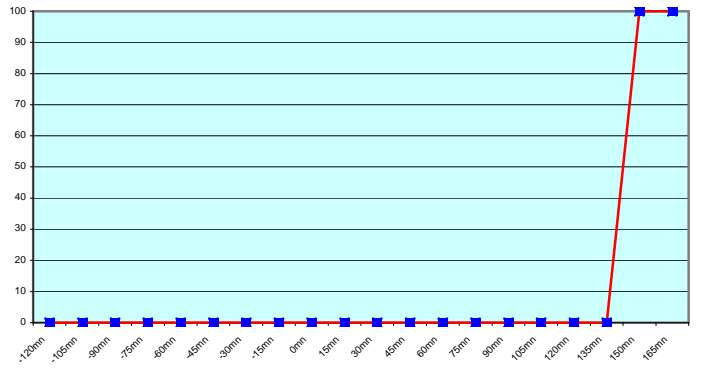
JCCX (11 report parts) Exeter 11



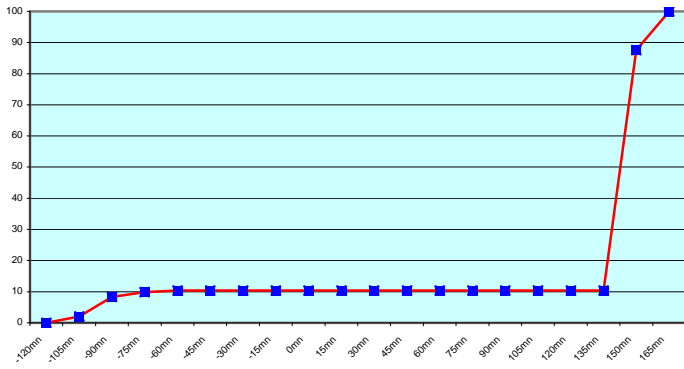
JGQH (91 report parts) Exeter 91

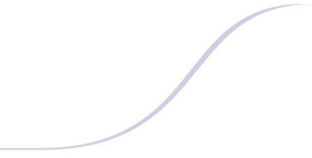


JDWX (38 report parts) Exeter 38



JNSR (193 report parts) Exeter 193





Most of the european ships results are good.

During the two last months, we experienced some problems with the reception of messages from ASES01. The configuration of the computer station was wrong after October 26<sup>th</sup> and ASES01 sent TEMP messages instead of sending TEMPSHIP messages (with a wrong call sign and without lat/lon) For that reason and from that time, none of the messages received from ASES01 were integrated in the GTS till the beginning of January, when the problem was solved.

Japanese ships follow a different procedure with an important shift between the sending of the message and the synoptic hour. By consequence, we excluded these ships to the Exeter graph.

For any comment or remark please contact Météo-France Toulouse DSO/DOA department

Gérard Rey ([gerard.rey@meteo.fr](mailto:gerard.rey@meteo.fr))

Daniel Bouchara ([daniel.bouchara@meteo.fr](mailto:daniel.bouchara@meteo.fr))

Hugues Jardat ([hugues.jardat@meteo.fr](mailto:hugues.jardat@meteo.fr))