

Joint WMO/IOC Technical Commission for  
Oceanography - Ship Observation Team

# **End-to-end report of the ASAP data dissemination performance**

## **July to September 2009**

## 1. Introduction

Météo-France is in charge of a end-to-end report of the ASAP data dissemination performance.

The matter of this paper is to evaluate the results of the three last months (July 2009 – September 2009).

## 2. Information available at Météo-France

TEMP-SHIP messages are received at LFPW (Toulouse) from EGRR (Exeter), EDZW (Offenbach) and Email.

The following information is available :

Reception at LFPW	Broadcast by LFPW
Call sign	Call sign
Header	Channel
Channel	Broadcast date
Reception date	Time lapse
Size	Broadcast size
Format	Recipient
Error	
Operator	

### 3. List of call signs available

<b>Country</b>	<b>Call sign</b>	<b>Country</b>	<b>Call sign</b>
Denmark	ASDK01	Japan	JCCX
	ASDK02		JGQH
	ASDK3		JIVB
E-ASAP	ASEU01		JDWX
	ASEU02		JNSR
	ASEU03	Norway	LDWR
	ASEU04	South Africa	ZSAF
	ASEU05	Spain	ASES01
France	ASFR1	United Kingdom	ASGB01
	ASFR2	USA	WTEC
Germany	ASDE01	Iceland	ASIS01
	ASDE02	Australia	3FPI7
	ASDE03		
	ASDE04	Test	SHIP
	DBLK		ASDE09

#### 4. Origin of the messages

Call sign	Offenbach	Exeter	Telex	Email	Mariner	Supervis	X25
ASEU01	260	0	0	0	0	0	0
ASEU02	408	0	0	0	0	0	0
ASEU03	18	0	0	0	0	0	0
ASEU04	232	0	0	0	0	0	0
ASEU05	314	0	0	0	0	0	0
ASDE01	472	0	0	0	0	0	0
ASDE02	350	0	0	0	0	0	0
ASDE03	344	0	0	0	0	0	0
ASDE04	468	0	0	0	0	0	0
DBLK	368	0	0	0	0	0	0
ASGB01	169	0	0	0	0	0	0
ASDK01	318	347	0	0	0	0	0
ASDK02	128	0	0	0	0	0	0
ASDK3	351	0	0	0	0	0	0
ASES01	0	0	0	157	0	0	0
ASFR1	0	0	0	255	0	2	0
ASFR2	0	0	0	191	0	0	0
LDWR	1277	0	0	0	0	0	0
JCCX	0	27	0	0	0	0	0
JGQH	0	18	0	0	0	0	0
JIVB	0	26	0	0	0	0	0
JDWX	0	79	0	0	0	0	0
JNSR	0	336	0	0	0	0	0
Test							
ASDE09	84	0	0	0	0	0	0
Wrong or strange call-sign							
XXXXX	181	736	0	34	0	0	0
numer.	11	0	0	2	0	0	0

Mariner: French navy military sounding  
 Supervis: handled by operator

## 5. Global system performance

Month	Origin	Nb of messages received	Nb of messages in error	Percentage of messages in error	Nb of messages with operator action	Percentage of messages with operator action
2009-Jul	Offenbach	2224	4	0,18		
	Exeter	511	0	0		
	Telex	0	not relevant	not relevant		
	Email	244	not relevant	not relevant		
	Mariner	0	not relevant	not relevant		
	X25	0	not relevant	not relevant		
	Supervis	1	0	0		
	Total	2735	4	0,15	1	0,04
2009-Aug	Offenbach	1810	0	0		
	Exeter	381	0	0		
	Telex	0	not relevant	not relevant		
	Email	257	not relevant	not relevant		
	Mariner	0	not relevant	not relevant		
	X25	0	not relevant	not relevant		
	Supervis	0	0	not relevant		
	Total	2191	0	0	0	0
2009-Sep	Offenbach	1719	0	0		
	Exeter	677	0	0		
	Telex	0	not relevant	not relevant		
	Email	138	not relevant	not relevant		
	Mariner	0	not relevant	not relevant		
	X25	0	not relevant	not relevant		
	Supervis	1	0	0		
	Total	2396	0	0	1	0,04
Total	Offenbach	5753	4	0,07		
	Exeter	1569	0	0		
	Telex	0	0	not relevant		
	Email	639	639	100		
	Mariner	0	not relevant	not relevant		
	X25	0	not relevant	not relevant		
	Supervis	2	0	0		
	Total	7963	4	0,05	2	0,03

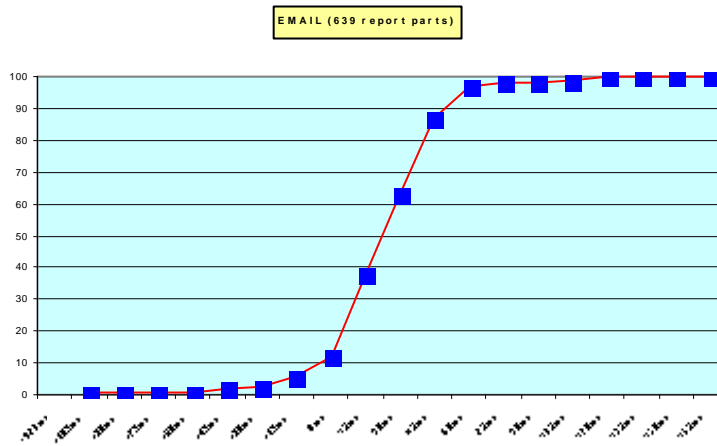
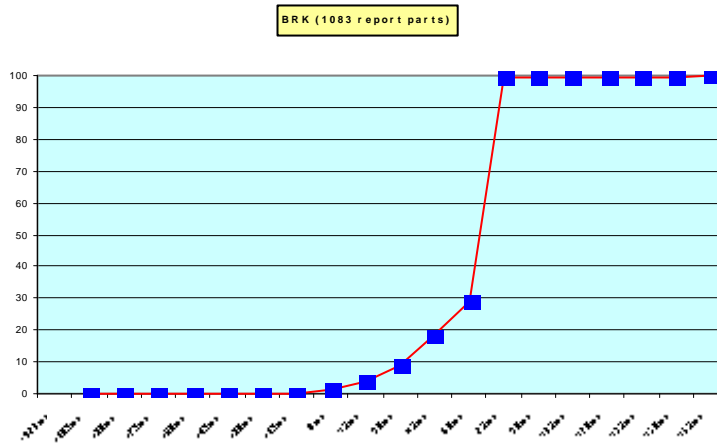
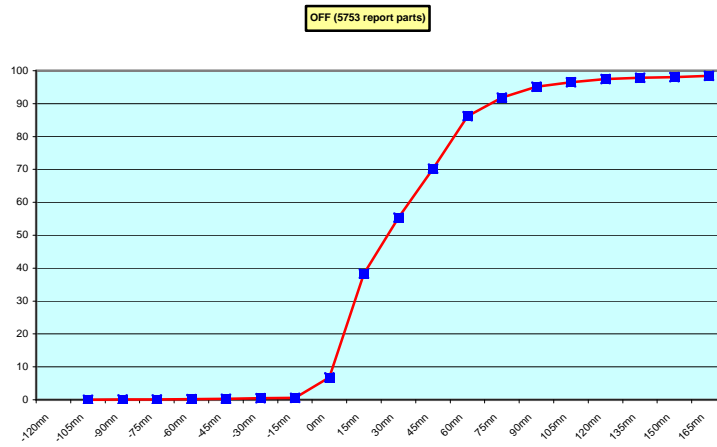
**Remark:** Email messages were excluded from the number of messages in error and from the relative percentage as values are regarded as not relevant. Not relevant percentages are due to not relevant values or to a total amount of data equal to zero.

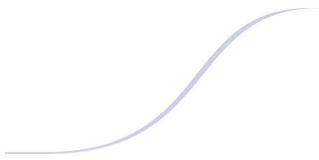
## 6. Global result of the syntactic check for the messages for each call sign.

Call sign	Nb of messages received	Nb of messages in error	Percentage of messages in error	Nb of messages with operator action	Percentage of messages with operator action
ASEU01	260	0	0	0	0
ASEU02	408	0	0	0	0
ASEU03	18	0	0	0	0
ASEU04	232	0	0	0	0
ASEU05	314	0	0	0	0
ASDE01	472	0	0	0	0
ASDE02	350	0	0	0	0
ASDE03	344	0	0	0	0
ASDE04	468	0	0	0	0
DBLK	368	0	0	0	0
ASGB01	169	0	0	0	0
ASDK01	665	0	0	0	0
ASDK02	128	0	0	0	0
ASDK3	351	0	0	0	0
ASES01	157	0	0	0	0
ASFR1	257	0	0	2	0,78
ASFR2	191	0	0	0	0
LDWR	1277	0	0	0	0
JCCX	27	0	0	0	0
JGQH	18	0	0	0	0
JIVB	26	0	0	0	0
JDWX	79	0	0	0	0
JNSR	336	0	0	0	0
Test					
ASDE09	84	4	4,76	0	0
Wrong or strange call-sign					
XXXXX	951	0	0	0	0
numer.	13	0	0	0	0

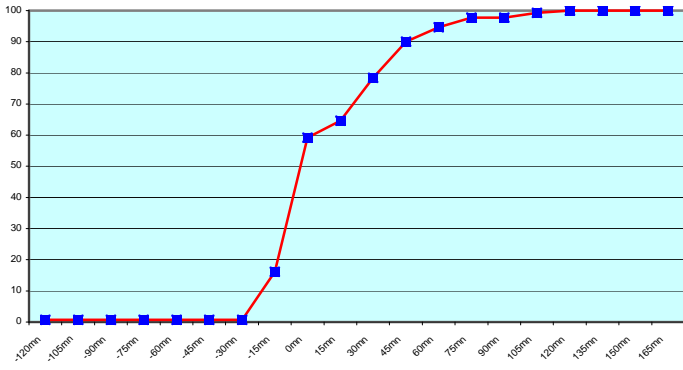
**Remark:** Data transmitted through email displayed an error rate close to 100% due to email syntax and were thus regarded as not relevant and excluded from errors total amount.

7. Mean time before the integration of the messages in the GTS in Toulouse. HH is the synoptic hour of reference.

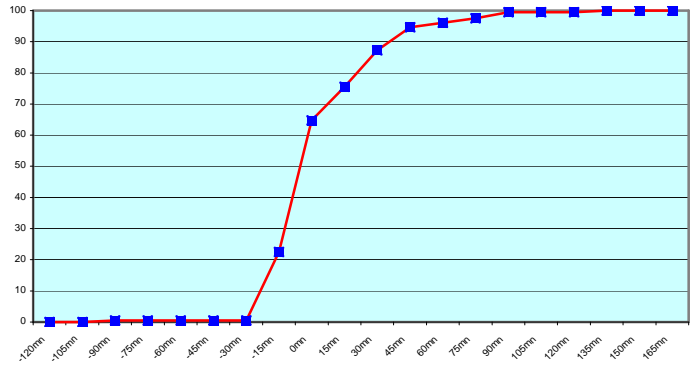




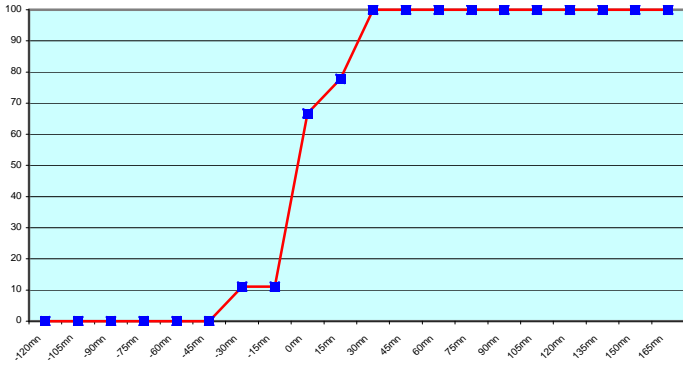
**ASEU01 (260 report parts) Offenbach 260**



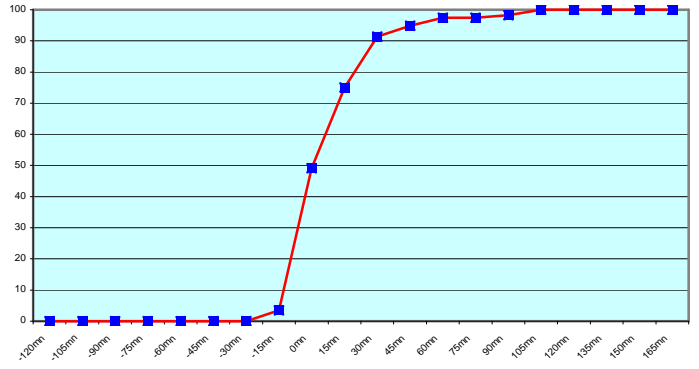
**ASEU02 (408 report parts) Offenbach 408**



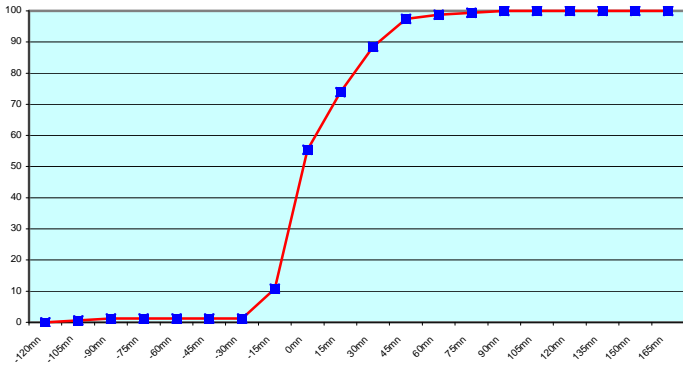
**ASEU03 (18 report parts) Offenbach 18**



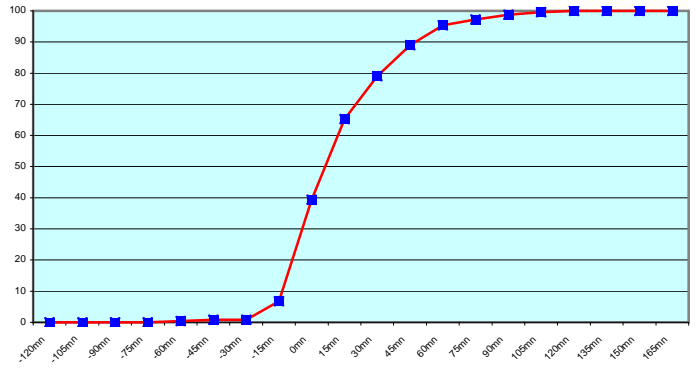
**ASEU04 (232 report parts) Offenbach 232**



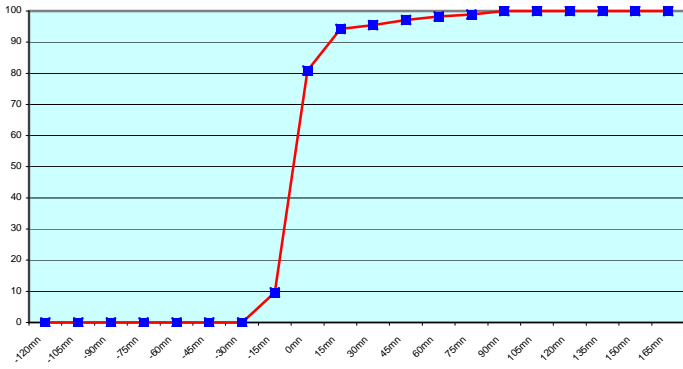
**ASEU05 (314 report parts) Offenbach 314**



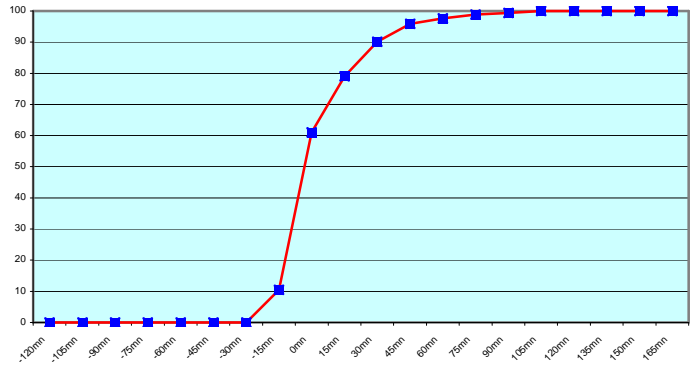
**ASDE01 (472 report parts) Offenbach 472**



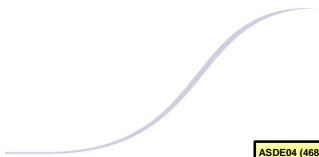
**ASDE02 (350 report parts) Offenbach 350**



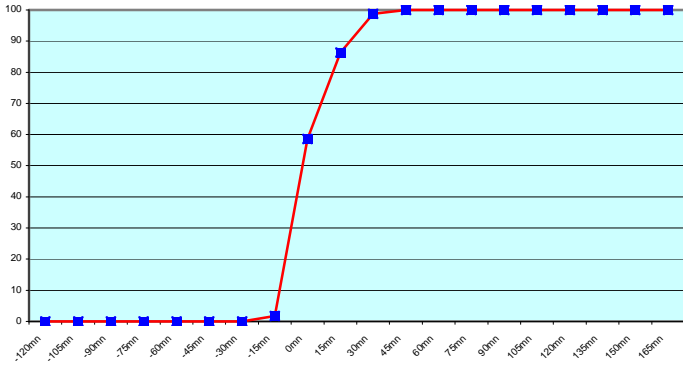
**ASDE03 (344 report parts) Offenbach 344**



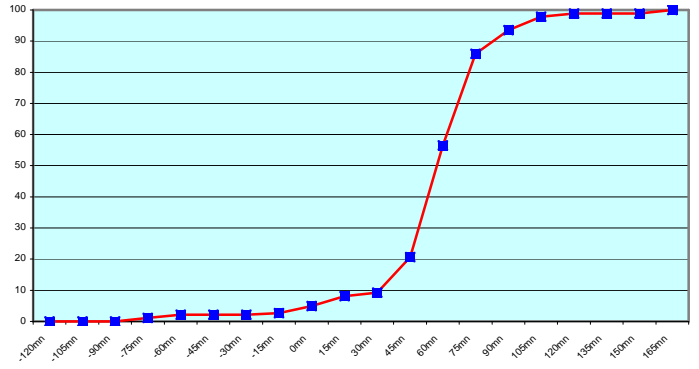




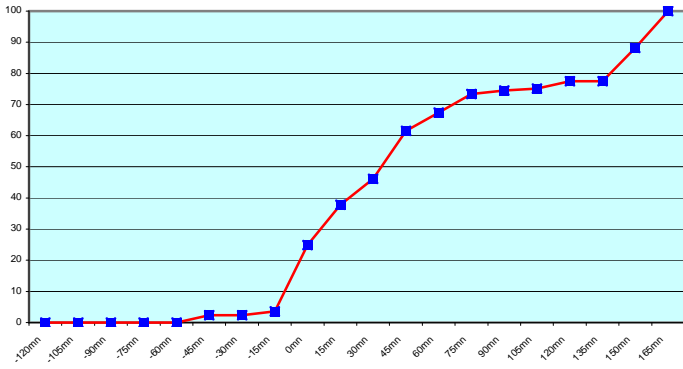
ASDE04 (468 report parts) Offenbach 468



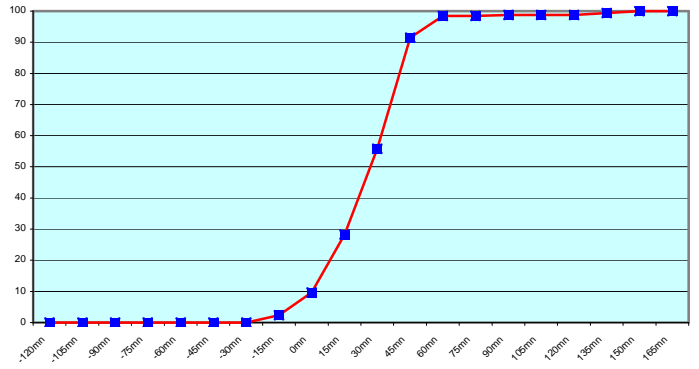
DBLK (368 report parts) Offenbach 368



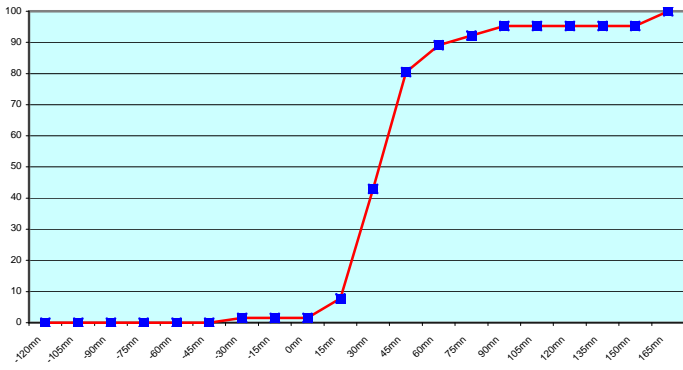
ASGB01 (169 report parts) Offenbach 169



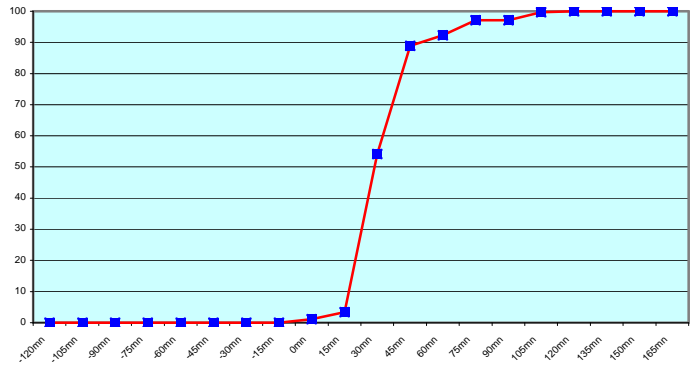
ASDK01 (665 report parts) Offenbach 318 Exeter 347



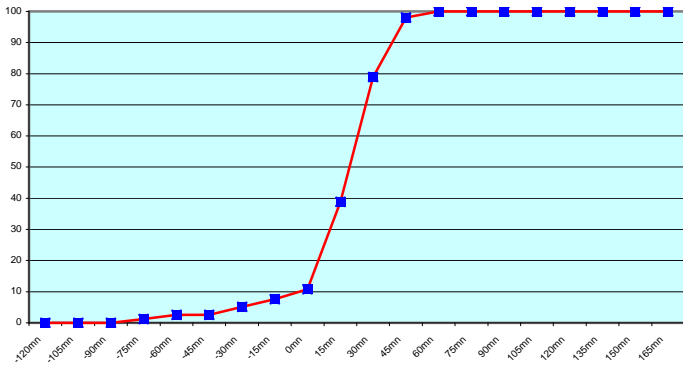
ASDK02 (128 report parts) Offenbach 128



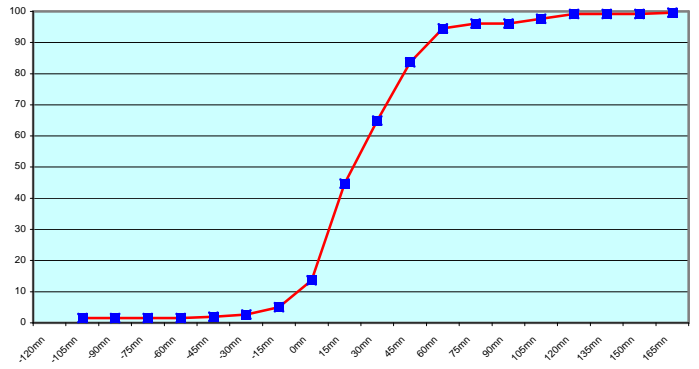
ASDK3 (351 report parts) Offenbach 351

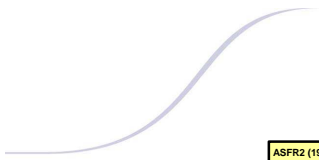


ASES01 (157 report parts) Email 157

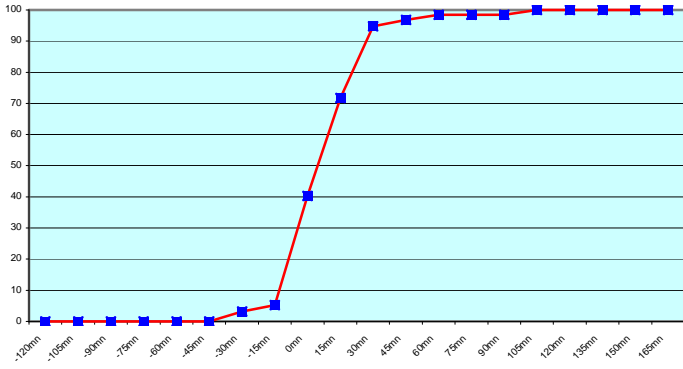


ASFR1 (257 report parts) Email 255 with supervision 2

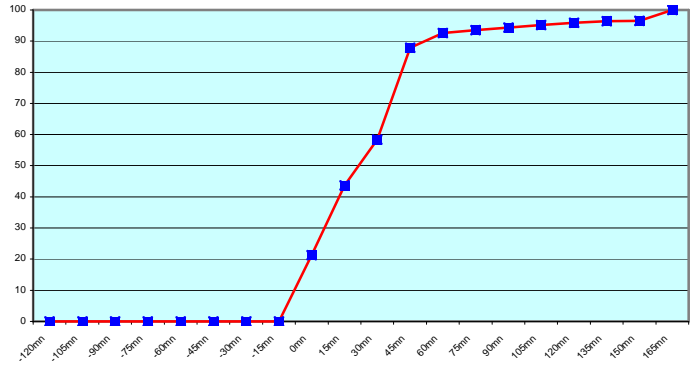




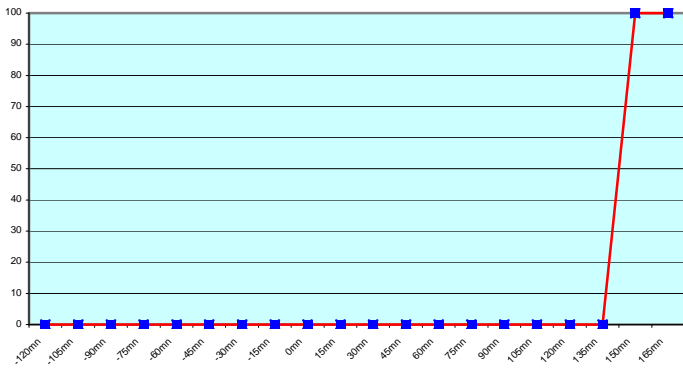
ASFR2 (191 report parts) Email 191



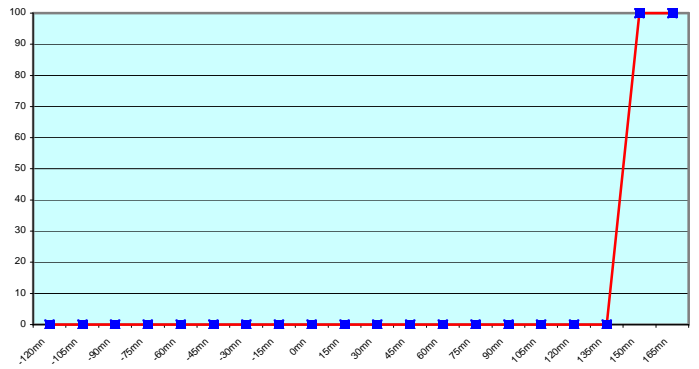
LDWR (1277 report parts) Offenbach 1277



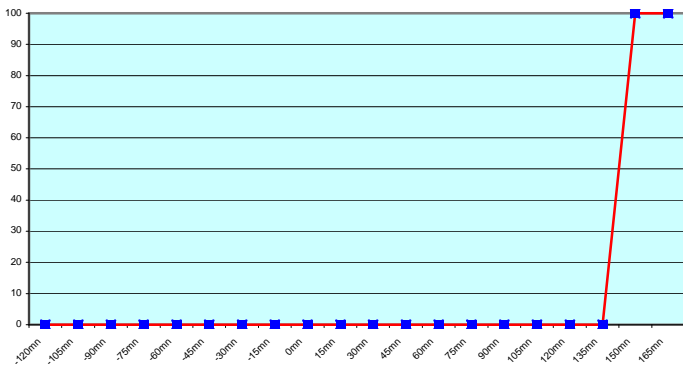
JCCX (27 report parts) Exeter 27



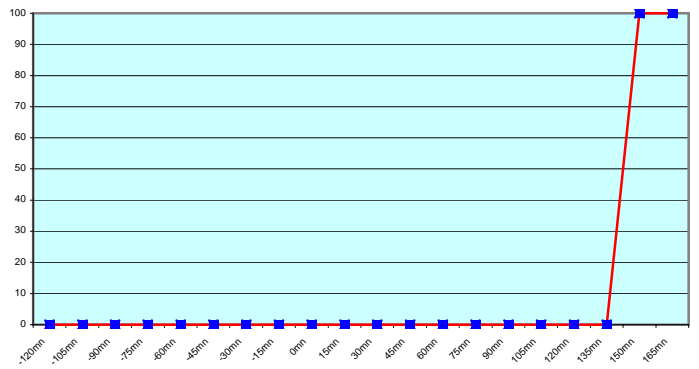
JGQH (18 report parts) Exeter 18



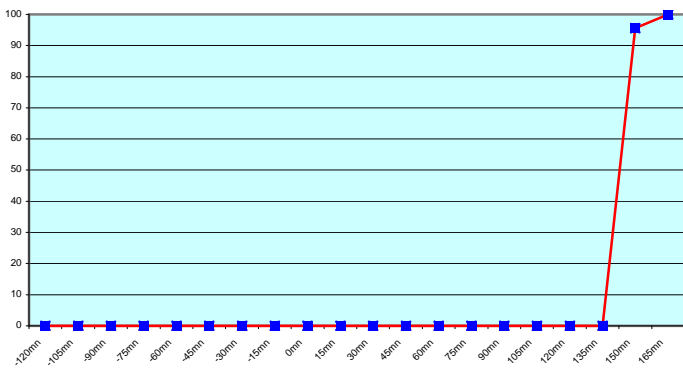
JIVB (26 report parts) Exeter 26

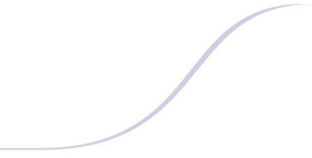


JDWX (79 report parts) Exeter 79



JNSR (336 report parts) Exeter 336





Most of the European ships results are good. Due to a problem of transmission, the ship ASGB01 displays a delay in message reception (The SIM card lock of the Iridium transceiver was broken and therefore no automatic transmissions possible. The operators sent the data manually via the ship's email system until replacement of the transceiver last call in Bremerhaven on 10/Oct).

Japanese ships follow a different procedure with an important shift between the sending of the message and the synoptic hour. By consequence, we excluded these ships to the Exeter graph.

For any comment or remark please contact Météo-France Toulouse DSO/DOA department

Gérard Rey ([gerard.rey@meteo.fr](mailto:gerard.rey@meteo.fr))

Daniel Bouchara ([daniel.bouchara@meteo.fr](mailto:daniel.bouchara@meteo.fr))

Hugues Jardat ([hugues.jardat@meteo.fr](mailto:hugues.jardat@meteo.fr))