

Joint WMO/IOC Technical Commission for
Oceanography - Ship Observation Team

End-to-end report of the ASAP data dissemination performance

April to June 2009

1. Introduction

Météo-France is in charge of a end-to-end report of the ASAP data dissemination performance.

The matter of this paper is to evaluate the results of the three last months (April 2009 – June 2009).

2. Information available at Météo-France

TEMP-SHIP messages are received at LFPW (Toulouse) from EGRR (Exeter), EDZW (Offenbach) and Email.

The following information is available :

Reception at LFPW	Broadcast by LFPW
Call sign	Call sign
Header	Channel
Channel	Broadcast date
Reception date	Time lapse
Size	Broadcast size
Format	Recipient
Error	
Operator	

3. List of call signs available

Country	Call sign	Country	Call sign
Denmark	ASDK01	Japan	JCCX
	ASDK02		JGQH
	ASDK3		JIVB
E-ASAP	ASEU01		JDWX
	ASEU02		JNSR
	ASEU03	Norway	LDWR
	ASEU04	South Africa	ZSAF
	ASEU05	Spain	ASES01
France	ASFR1	United Kingdom	ASGB01
	ASFR2	USA	WTEC
Germany	ASDE01	Iceland	ASIS01
	ASDE02	Australia	3FPI7
	ASDE03		
	ASDE04	Test	SHIP
	DBLK		ASDE09

4. Origin of the messages

Call sign	Offenbach	Exeter	Telex	Email	Mariner	Supervis	X25
ASEU01	182	0	0	0	0	0	0
ASEU02	394	0	0	0	0	0	0
ASEU03	190	0	0	0	0	0	0
ASEU04	228	0	0	0	0	0	0
ASEU05	320	0	0	0	0	0	0
ASDE01	345	0	0	0	0	0	0
ASDE02	146	0	0	0	0	0	0
ASDE03	94	0	0	0	0	0	0
ASDE04	532	0	0	0	0	0	0
DBLK	228	0	0	0	0	0	0
ASGB01	231	0	0	0	0	0	0
ASDK01	310	332	0	0	0	0	0
ASDK02	342	0	0	0	0	0	0
ASDK3	295	0	0	0	0	0	0
ASES01	0	0	0	143	0	2	0
ASFR1	0	0	0	193	0	14	0
ASFR2	0	0	0	286	0	4	0
LDWR	1394	0	0	0	0	0	0
JCCX	0	40	0	0	0	0	0
JGQH	0	119	0	0	0	0	0
JIVB	0	19	0	0	0	0	0
JDWX	0	72	0	0	0	0	0
Test							
ASDE09	58	0	0	0	0	0	0
Wrong or strange call-sign							
ASBG01	10	0	0	0	0	0	0
UUBBASES01	0	0	0	0	0	0	1
XXXXX	257	728	0	29	0	2	0
numer.	2	0	0	0	0	1	0

Mariner: French navy military sounding
 Supervis: handled by operator

5. Global system performance

Month	Origin	Nb of messages received	Nb of messages in error	Percentage of messages in error	Nb of messages with operator action	Percentage of messages with operator action
2009-Apr	Offenbach	1707	0	0		
	Exeter	356	0	0		
	Telex	0	not relevant	not relevant		
	Email	145	not relevant	not relevant		
	Mariner	0	not relevant	not relevant		
	X25	1	not relevant	not relevant		
	Supervis	6	3	50		
	Total	2063	0	0	6	0,29
2009-May	Offenbach	1904	0	0		
	Exeter	563	0	0		
	Telex	0	not relevant	not relevant		
	Email	255	not relevant	not relevant		
	Mariner	0	not relevant	not relevant		
	X25	0	not relevant	not relevant		
	Supervis	8	6	75		
	Total	2467	0	0	8	0,32
2009-Jun	Offenbach	1947	0	0		
	Exeter	391	0	0		
	Telex	0	not relevant	not relevant		
	Email	251	not relevant	not relevant		
	Mariner	0	not relevant	not relevant		
	X25	0	not relevant	not relevant		
	Supervis	9	3	33,33		
	Total	2338	0	0	9	0,38
Total	Offenbach	5558	0	0		
	Exeter	1310	0	0		
	Telex	0	0	not relevant		
	Email	651	651	100		
	Mariner	0	not relevant	not relevant		
	X25	1	not relevant	not relevant		
	Supervis	23	12	52,17		
	Total	7543	0	0	23	0,33

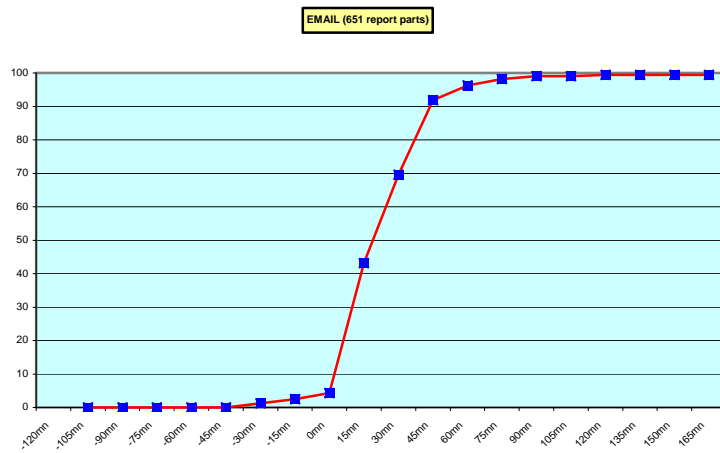
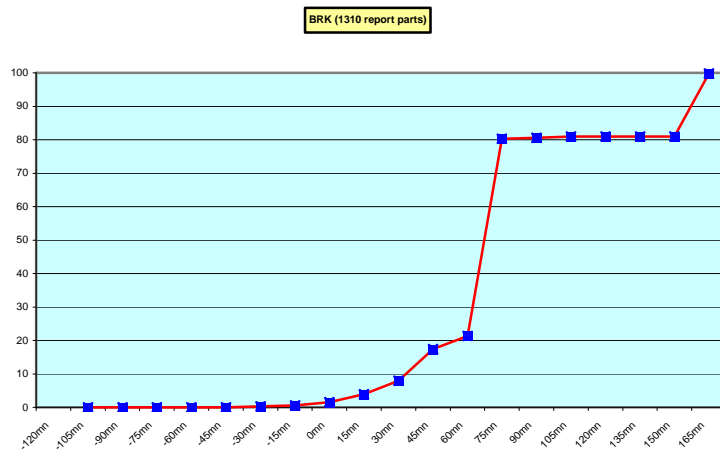
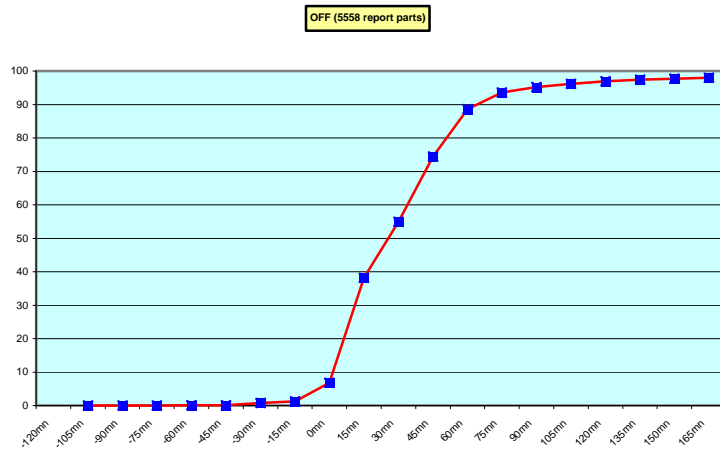
Remark: Email messages were excluded from the number of messages in error and from the relative percentage as values are regarded as not relevant. Not relevant percentages are due to not relevant values or to a total amount of data equal to zero.

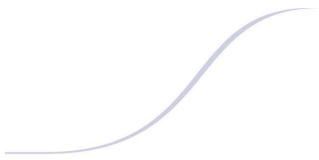
6. Global result of the syntactic check for the messages for each call sign.

Call sign	Nb of messages received	Nb of messages in error	Percentage of messages in error	Nb of messages with operator action	Percentage of messages with operator action
ASEU01	182	0	0	0	0
ASEU02	394	0	0	0	0
ASEU03	190	0	0	0	0
ASEU04	228	0	0	0	0
ASEU05	320	0	0	0	0
ASDE01	345	0	0	0	0
ASDE02	146	0	0	0	0
ASDE03	94	0	0	0	0
ASDE04	532	0	0	0	0
DBLK	228	0	0	0	0
ASGB01	231	0	0	0	0
ASDK01	642	0	0	0	0
ASDK02	342	0	0	0	0
ASDK3	295	0	0	0	0
ASES01	145	0	0	2	1,38
ASFR1	207	11	5,31	14	6,76
ASFR2	290	0	0	4	1,38
LDWR	1394	0	0	0	0
JCCX	40	0	0	0	0
JGQH	119	0	0	0	0
JIVB	19	0	0	0	0
JDWX	72	0	0	0	0
Test					
ASDE09	58	0	0	0	0
Wrong or strange call-sign					
ASBG01	10	0	0	0	0
UUBBASES01	1	0	0	0	0
XXXXX	1016	0	0	2	0,2
numer.	3	1	33,33	1	33,33

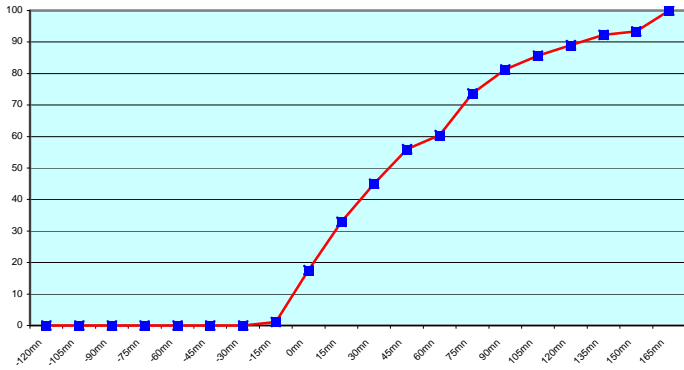
Remark: Data transmitted through email displayed an error rate close to 100% due to email syntax and were thus regarded as not relevant and excluded from errors total amount.

7. Mean time before the integration of the messages in the GTS in Toulouse. HH is the synoptic hour of reference.

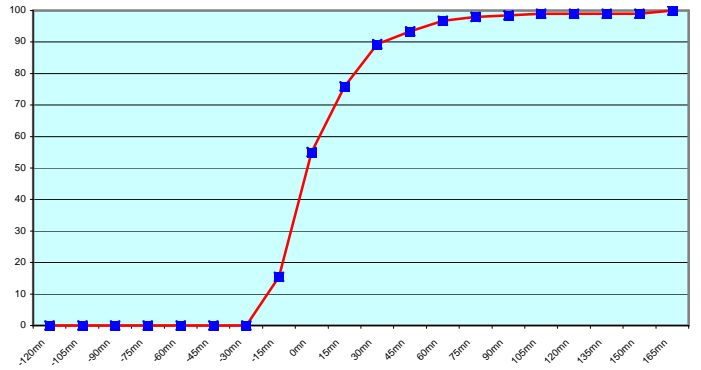




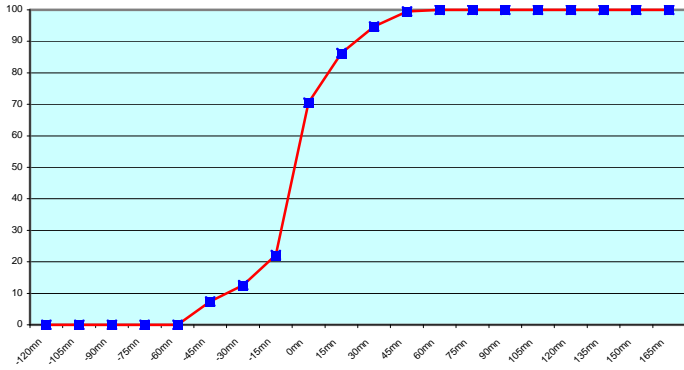
ASEU01 (182 report parts) Offenbach 182



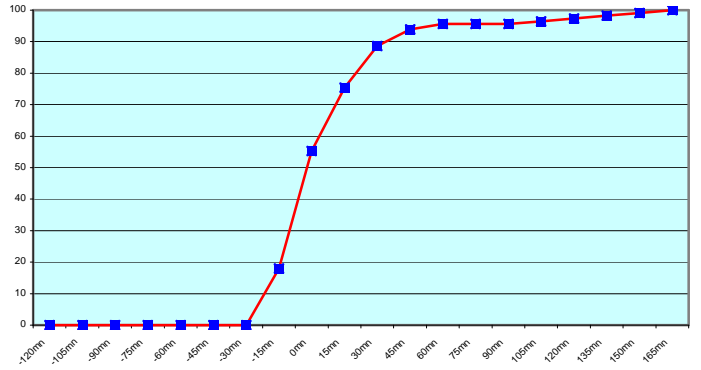
ASEU02 (394 report parts) Offenbach 394



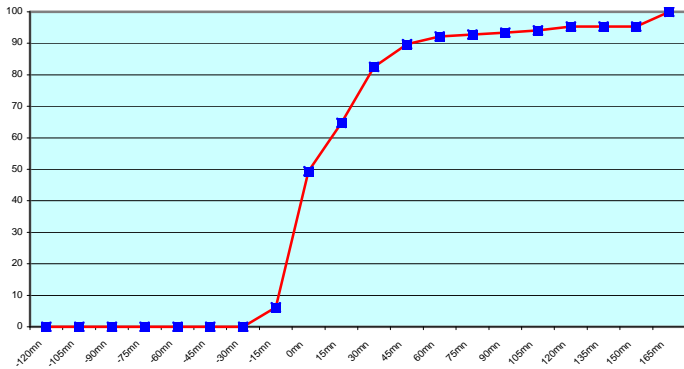
ASEU03 (190 report parts) Offenbach 190



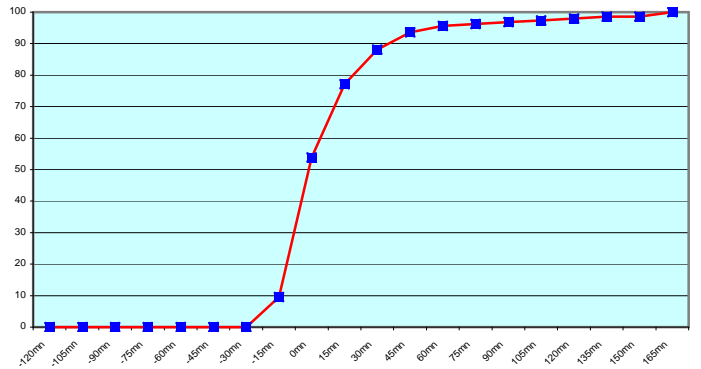
ASEU04 (228 report parts) Offenbach 228

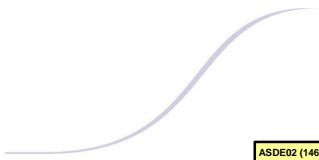


ASEU05 (320 report parts) Offenbach 320

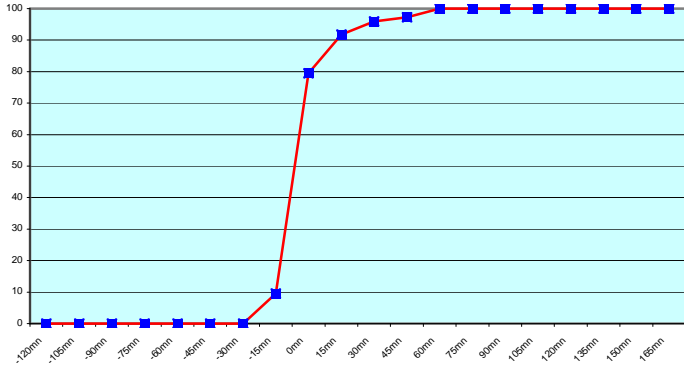


ASED01 (345 report parts) Offenbach 345

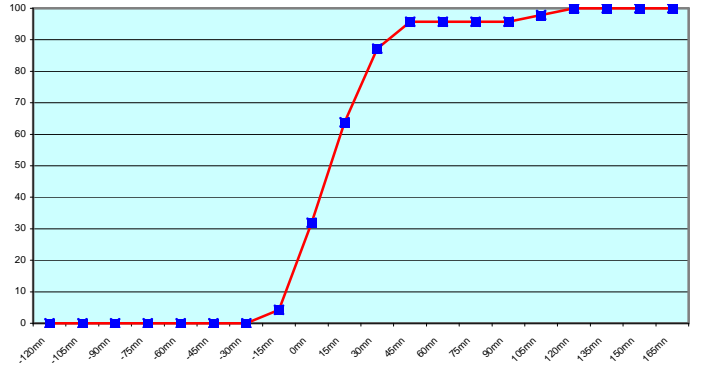




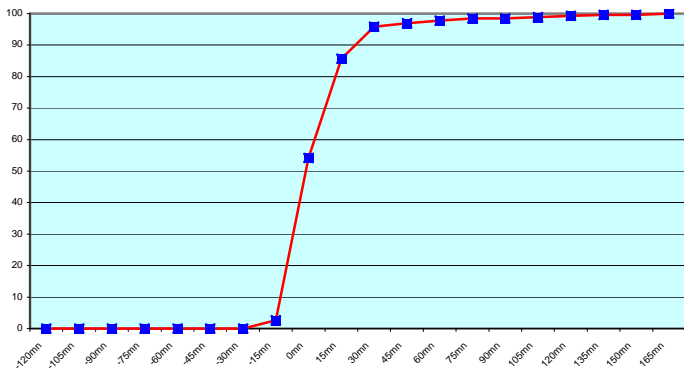
ASDE02 (146 report parts) Offenbach 146



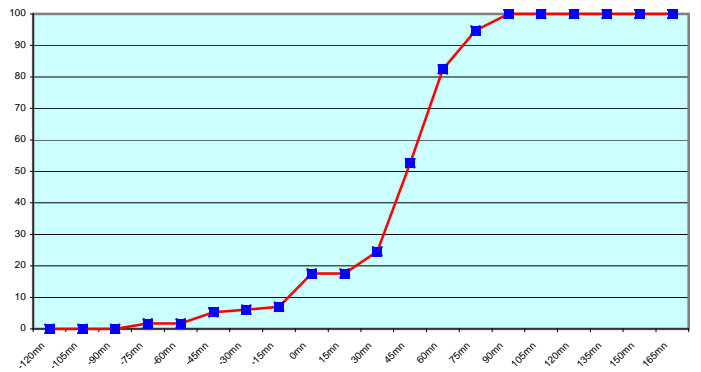
ASDE03 (94 report parts) Offenbach 94



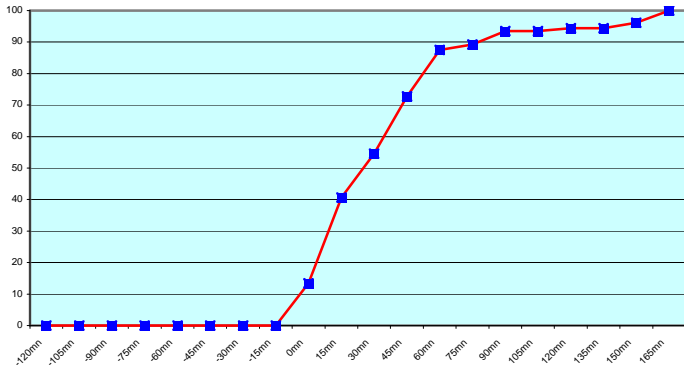
ASDE04 (532 report parts) Offenbach 532



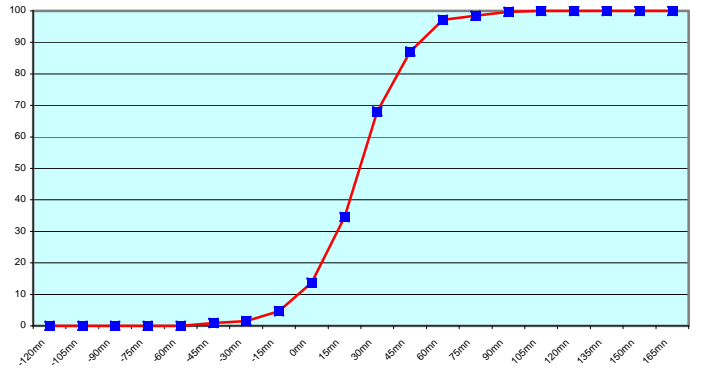
DBLK (228 report parts) Offenbach 228



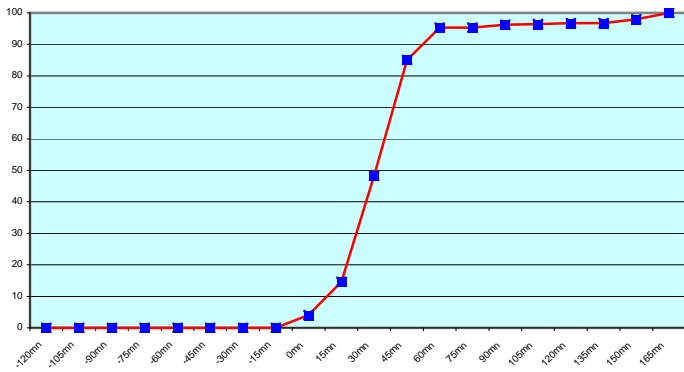
ASGB01 (231 report parts) Offenbach 231



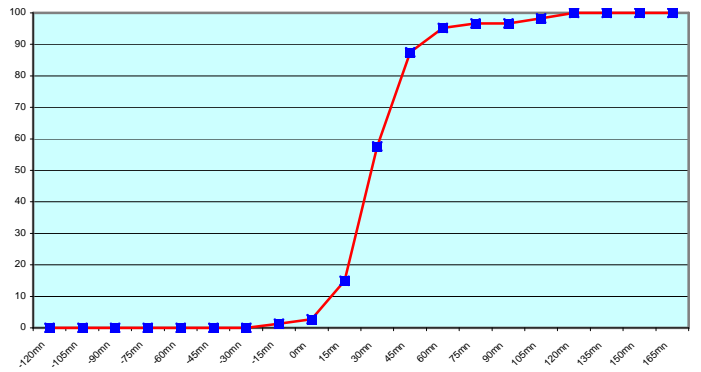
ASDK01 (642 report parts) Offenbach 310 Exeter 332

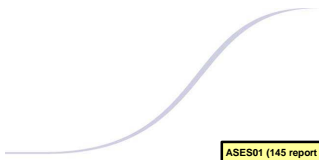


ASDK02 (342 report parts) Offenbach 342

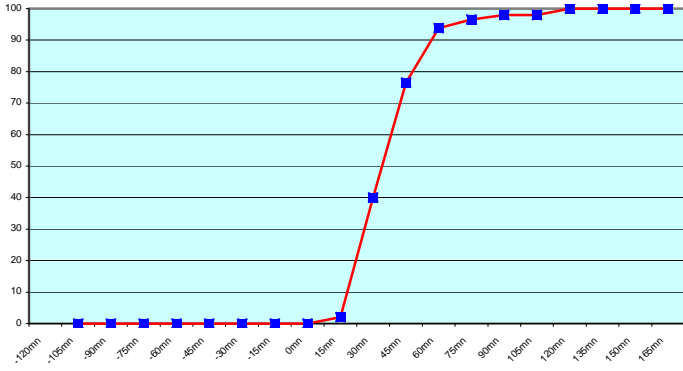


ASDK3 (295 report parts) Offenbach 295

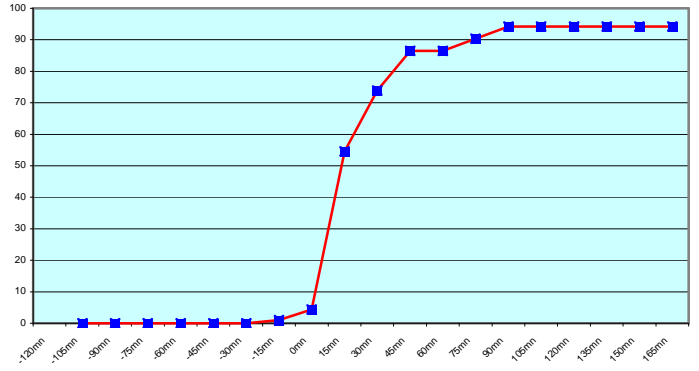




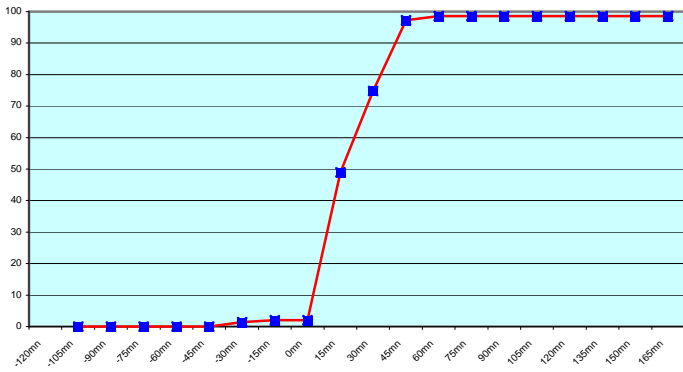
ASES01 (145 report parts) Email 143 with supervision 2



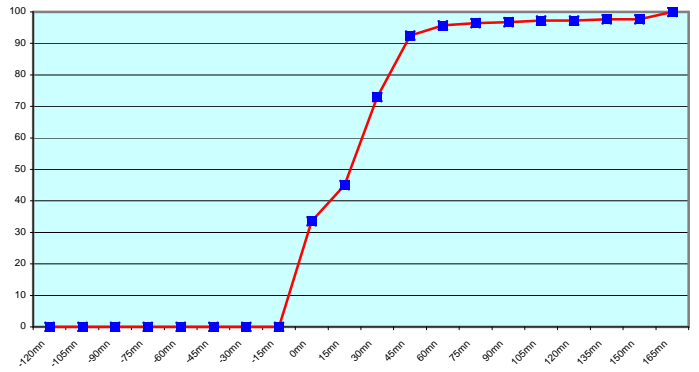
ASFR1 (207 report parts) Email 193 with supervision 14



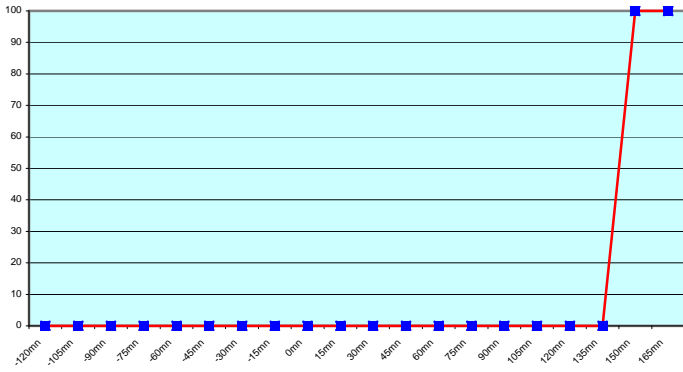
ASFR2 (290 report parts) Email 286 with supervision 4



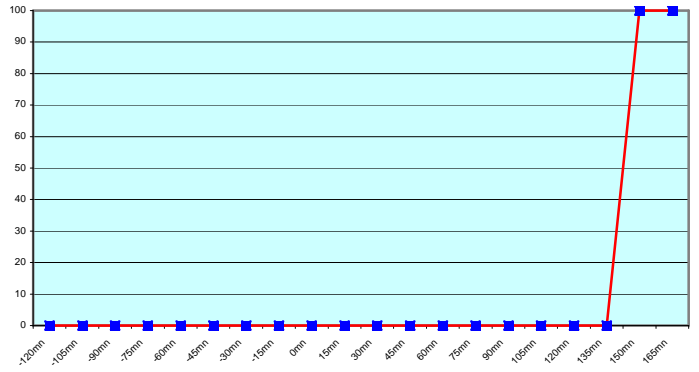
LDWR (1394 report parts) Offenbach 1394



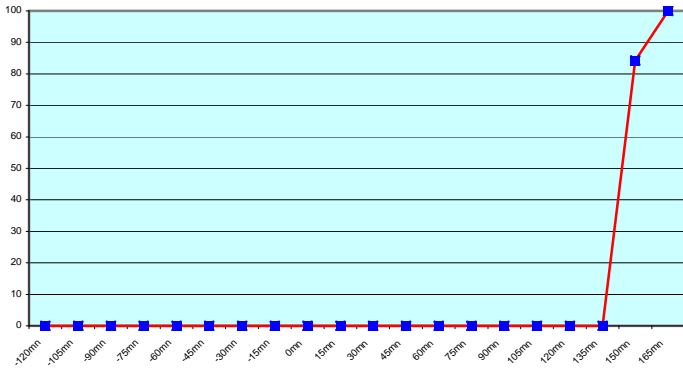
JCCX (40 report parts) Exeter 40



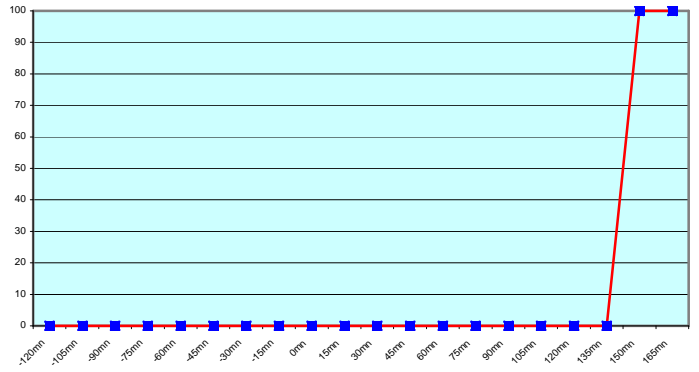
JGQH (119 report parts) Exeter 119

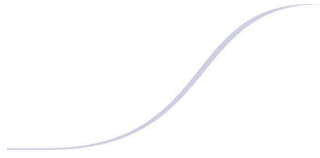


JIVB (19 report parts) Exeter 19



JDWX (72 report parts) Exeter 72





Most of the European ships results are good. Due to a problem of operation, the ship ASEU01 displays a delay in message reception. The problem is identified and will be corrected next months.

Japanese ships follow a different procedure with an important shift between the sending of the message and the synoptic hour. By consequence, the shape of the curve of messages received from Exeter is different from what expected.

For any comment or remark please contact Météo-France Toulouse DSO/DOA department

Gérard Rey (gerard.rey@meteo.fr)

Daniel Bouchara (daniel.bouchara@meteo.fr)

Hugues Jardat (hugues.jardat@meteo.fr)