

Joint WMO/IOC Technical Commission for  
Oceanography - Ship Observation Team

# **End-to-end report of the ASAP data dissemination performance**

## **January to March 2009**

## 1. Introduction

Météo-France is in charge of a end-to-end report of the ASAP data dissemination performance.

The matter of this paper is to evaluate the results of the three last months (January 2009 – March 2009).

## 2. Information available at Météo-France

TEMP-SHIP messages are received at LFPW (Toulouse) from EGRR (Exeter), EDZW (Offenbach) and Email.

The following information is available :

Reception at LFPW	Broadcast by LFPW
Call sign	Call sign
Header	Channel
Channel	Broadcast date
Reception date	Time lapse
Size	Broadcast size
Format	Recipient
Error	
Operator	

### 3. List of call signs available

<b>Country</b>	<b>Call sign</b>	<b>Country</b>	<b>Call sign</b>
Denmark	ASDK01	Japan	JCCX
	ASDK02		JGQH
			JIVB
E-ASAP	ASEU01		JDWX
	ASEU02		JNSR
	ASEU03	Norway	LDWR
	ASEU04	South Africa	ZSAF
	ASEU05	Spain	ASES01
France	ASFR1	United Kingdom	ASGB01
	ASFR2	USA	WTEC
Germany	ASDE01	Iceland	ASIS01
	ASDE02	Australia	3FPI7
	ASDE03		
	ASDE04	Test	SHIP
	DBLK		ASDE09

#### 4. Origin of the messages

Call sign	Offenbach	Exeter	Telex	Email	Mariner	Supervis	X25
ASEU01	12	0	0	0	0	0	0
ASEU02	15	0	0	0	0	0	0
ASEU03	234	0	0	0	0	0	0
ASEU04	306	0	0	0	0	0	0
ASEU05	282	0	0	0	0	0	0
ASDE01	296	0	0	0	0	0	0
ASDE02	292	0	0	0	0	0	0
ASDE03	164	0	0	0	0	0	0
ASDE04	461	0	0	0	0	0	0
DBLK	296	0	0	0	0	0	0
ASGB01	216	0	0	0	0	0	0
ASDK01	67	75	0	0	0	0	0
ASDK02	369	0	0	0	0	0	0
ASES01	0	0	0	109	0	0	0
ASFR1	0	0	0	255	0	5	0
ASFR2	0	0	0	230	0	0	0
LDWR	1382	0	0	0	0	0	0
JCCX	0	23	0	0	0	0	0
JGQH	0	234	0	0	0	0	0
JIVB	0	2	0	0	0	0	0
JDWX	0	19	0	0	0	0	0
Test							
ASDE09	112	0	0	0	0	0	0
Wrong or strange call sign							
ASDK3	217	2	0	0	0	0	0
JBT	0	0	0	0	4	0	0
XXXXX	241	697	0	29	4	0	0
numer.	0	0	0	1	0	0	0

Mariner: French navy military sounding  
 Supervis: handled by operator

## 5. Global system performance

Month	Origin	Nb of messages received	Nb of messages in error	Percentage of messages in error	Nb of messages with operator action	Percentage of messages with operator action
2009-Jan	Offenbach	1523	0	0		
	Exeter	370	1	0,27		
	Telex	0	not relevant	not relevant		
	Email	220	not relevant	not relevant		
	Mariner	0	not relevant	not relevant		
	X25	0	not relevant	not relevant		
	Supervis	4	4	100		
	Total	1893	1	0,05	4	0,21
2009-Feb	Offenbach	1624	0	0		
	Exeter	394	0	0		
	Telex	0	not relevant	not relevant		
	Email	209	not relevant	not relevant		
	Mariner	8	not relevant	not relevant		
	X25	0	not relevant	not relevant		
	Supervis	1	0	0		
	Total	2018	0	0	1	0,05
2009-Mar	Offenbach	1815	0	0		
	Exeter	288	0	0		
	Telex	0	not relevant	not relevant		
	Email	195	not relevant	not relevant		
	Mariner	0	not relevant	not relevant		
	X25	0	not relevant	not relevant		
	Supervis	0	0	not relevant		
	Total	2103	0	0	0	0
Total	Offenbach	4962	0	0		
	Exeter	1052	1	0,1		
	Telex	0	0	not relevant		
	Email	624	624	100		
	Mariner	8	not relevant	not relevant		
	X25	0	not relevant	not relevant		
	Supervis	5	4	80		
	Total	6651	1	0,02	5	0,08

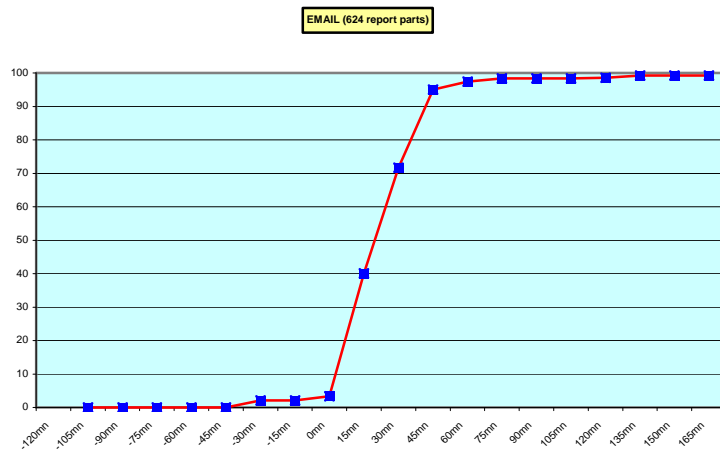
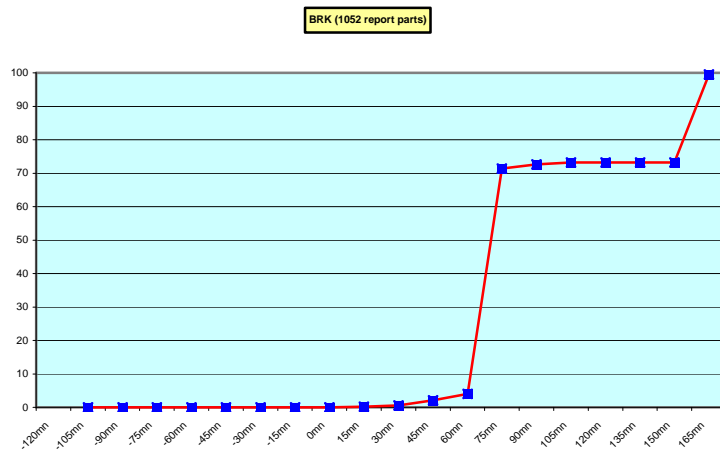
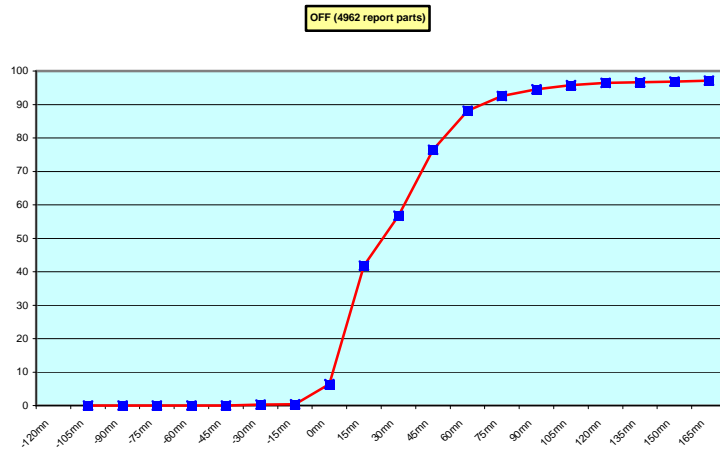
**Remark:** Email messages were excluded from the number of messages in error and from the relative percentage as values are regarded as not relevant. Not relevant percentages are due to not relevant values or to a total amount of data equal to zero.

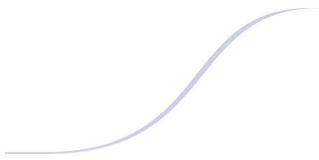
## 6. Global result of the syntactic check for the messages for each call sign.

Call sign	Nb of messages received	Nb of messages in error	Percentage of messages in error	Nb of messages with operator action	Percentage of messages with operator action
ASEU01	12	0	0	0	0
ASEU02	15	0	0	0	0
ASEU03	234	0	0	0	0
ASEU04	306	0	0	0	0
ASEU05	282	0	0	0	0
ASDE01	296	0	0	0	0
ASDE02	292	0	0	0	0
ASDE03	164	0	0	0	0
ASDE04	461	0	0	0	0
DBLK	296	0	0	0	0
ASGB01	216	0	0	0	0
ASDK01	142	0	0	0	0
ASDK02	369	0	0	0	0
ASES01	109	0	0	0	0
ASFR1	260	4	1,54	5	1,92
ASFR2	230	0	0	0	0
LDWR	1382	0	0	0	0
JCCX	23	1	4,35	0	0
JGQH	234	0	0	0	0
JIVB	2	0	0	0	0
JDWX	19	0	0	0	0
Test					
ASDE09	112	0	0	0	0
Wrong or strange call sign					
ASDK3	219	0	0	0	0
JBT	4	0	0	0	0
XXXXX	971	0	0	0	0
numer.	1	0	0	0	0

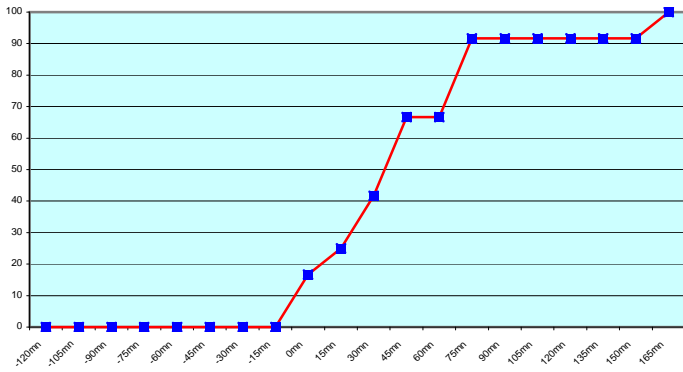
**Remark:** Data transmitted through email displayed an error rate close to 100% due to email syntax and were thus regarded as not relevant and excluded from errors total amount.

7. Mean time before the integration of the messages in the GTS in Toulouse. HH is the synoptic hour of reference.

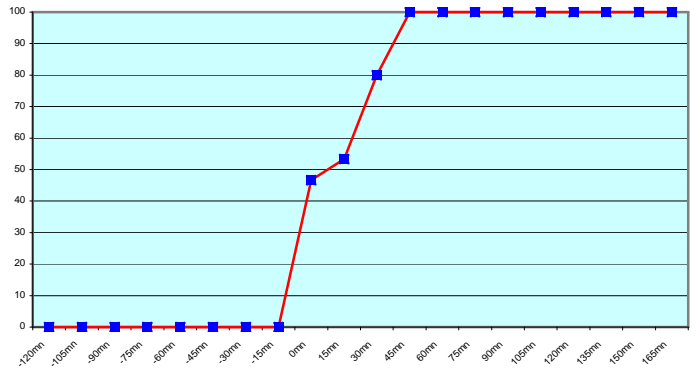




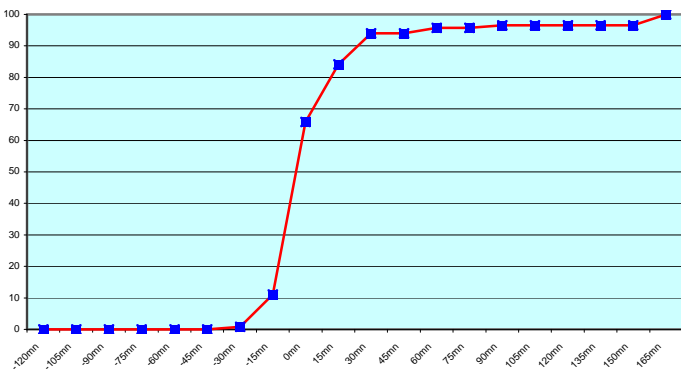
**ASEU01 (12 report parts) Offenbach 12**



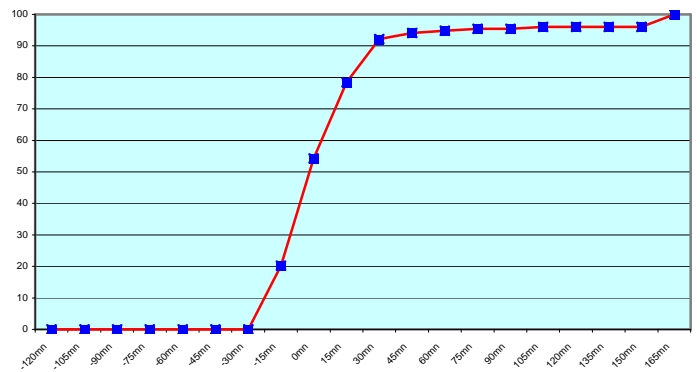
**ASEU02 (15 report parts) Offenbach 15**



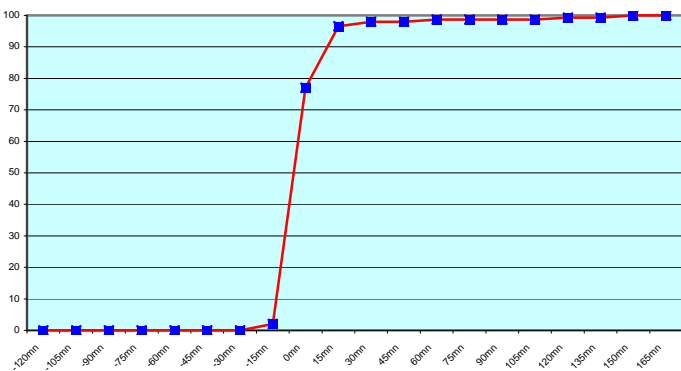
**ASEU03 (234 report parts) Offenbach 234**



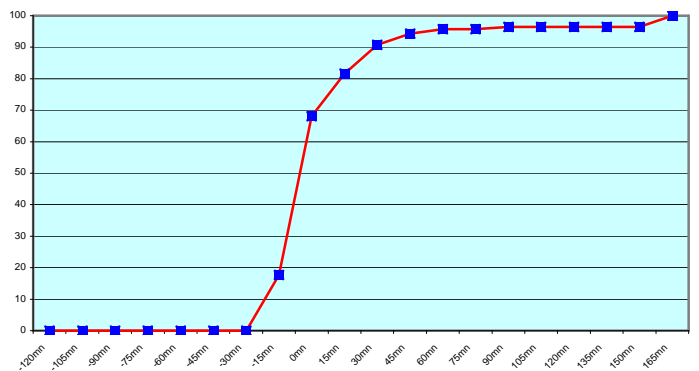
**ASEU04 (306 report parts) Offenbach 306**



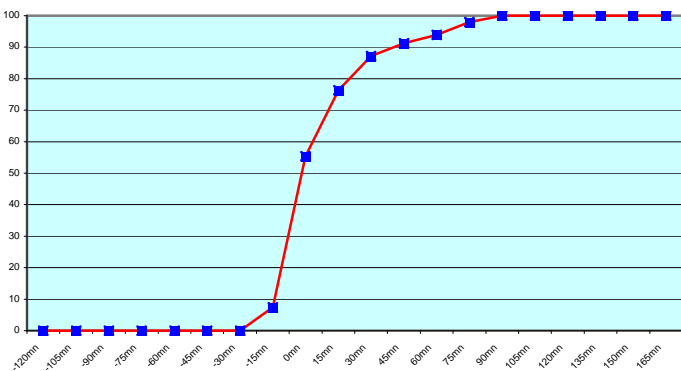
**ASDE02 (292 report parts) Offenbach 292**



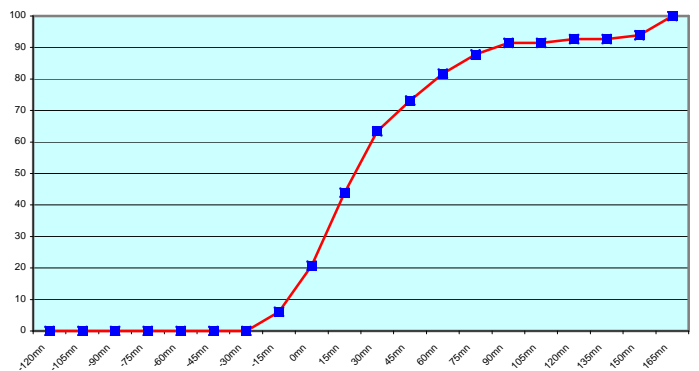
**ASEU05 (282 report parts) Offenbach 282**



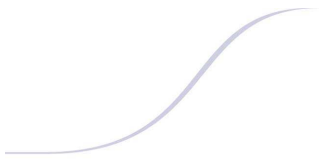
**ASDE01 (296 report parts) Offenbach 296**



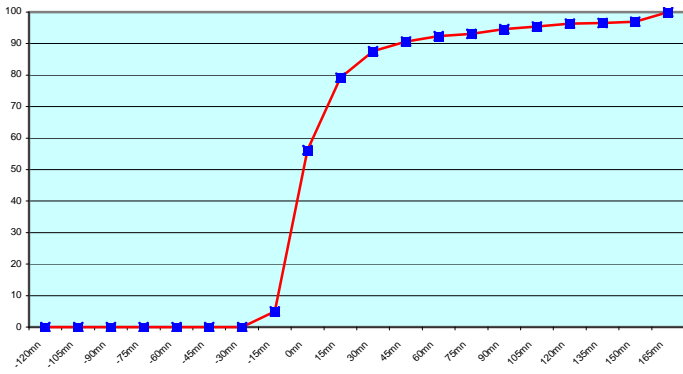
**ASDE03 (164 report parts) Offenbach 164**



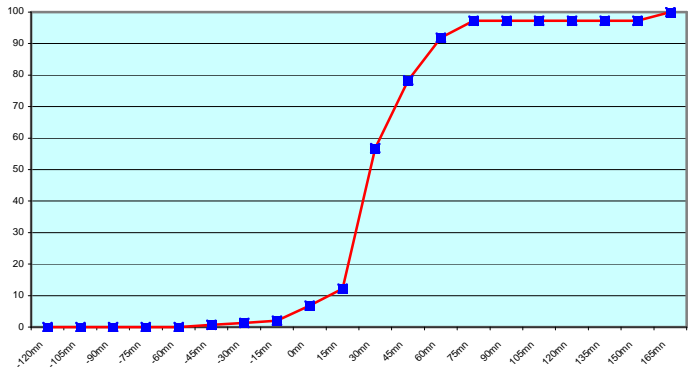




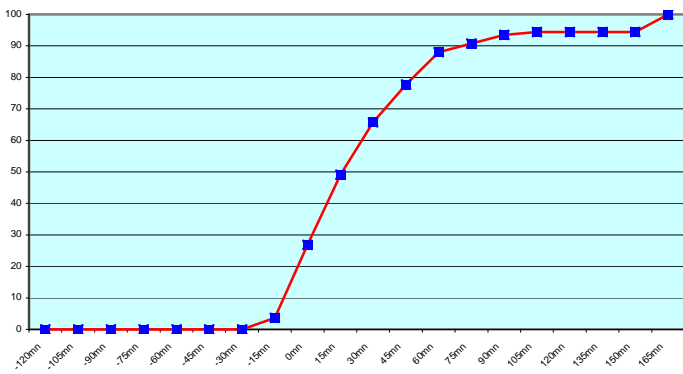
ASDE04 (461 report parts) Offenbach 461



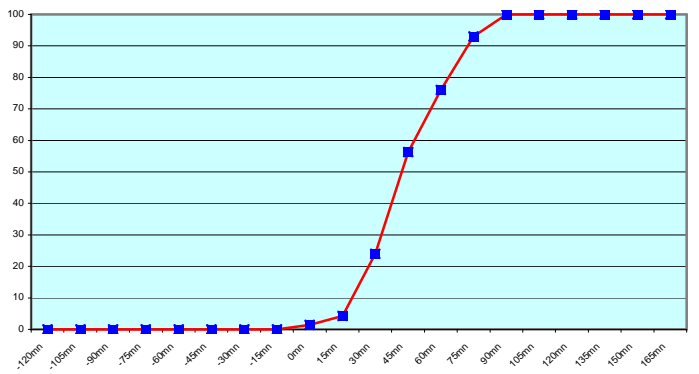
DBLK (296 report parts) Offenbach 296



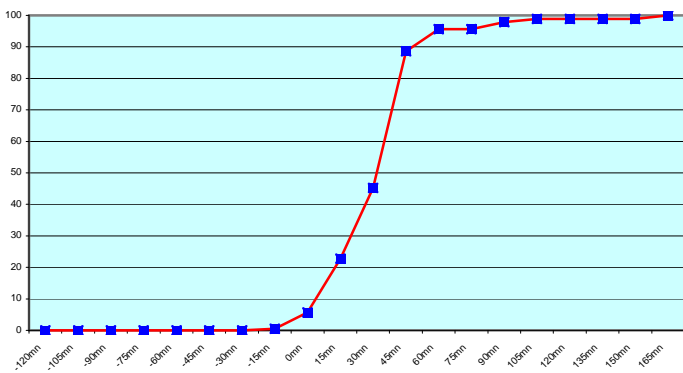
ASGB01 (216 report parts) Offenbach 216



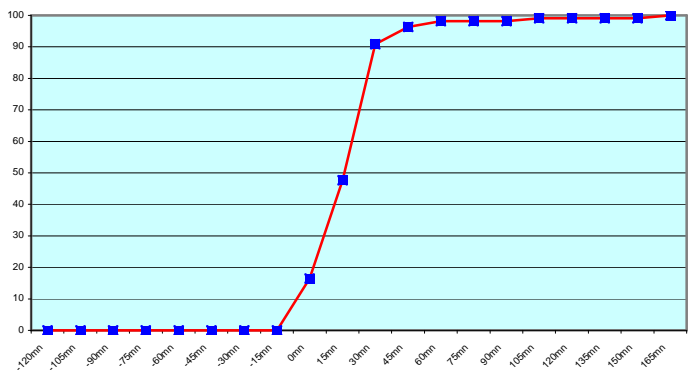
ASDK01 (142 report parts) Offenbach 67 Exeter 75



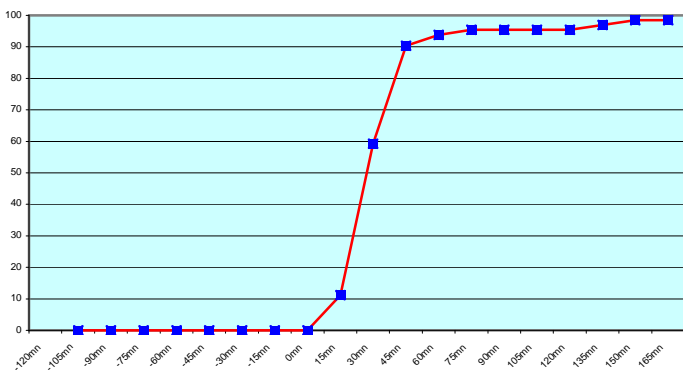
ASDK02 (369 report parts) Offenbach 369



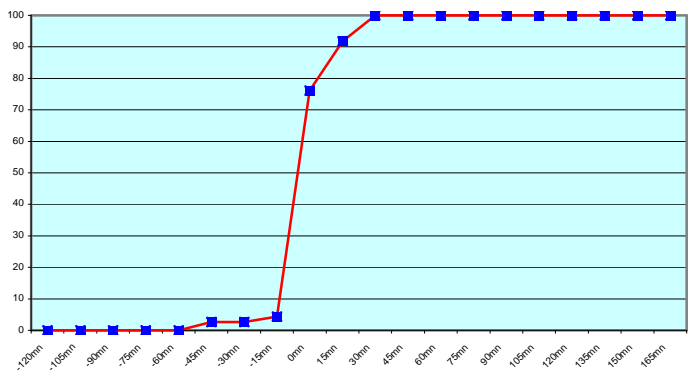
ASES01 (109 report parts) Email 109

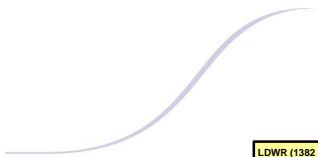


ASFR1 (260 report parts) Email 255 with supervision 5

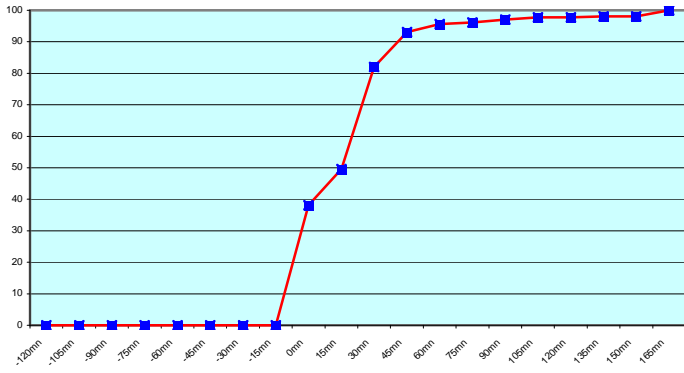


ASFR2 (230 report parts) Email 230

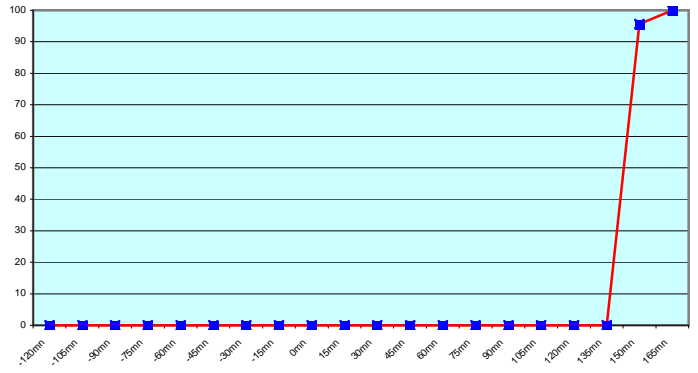




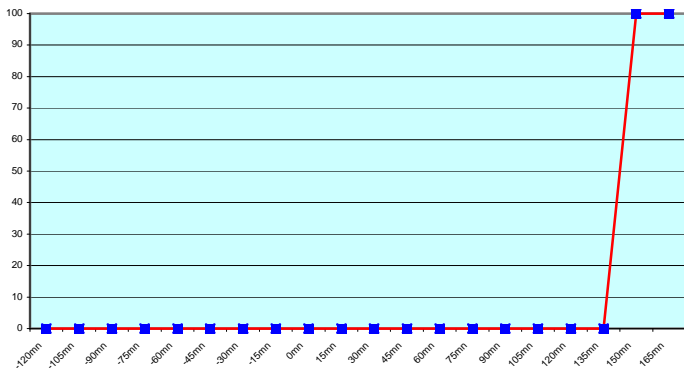
LDWR (1382 report parts) Offenbach 1382



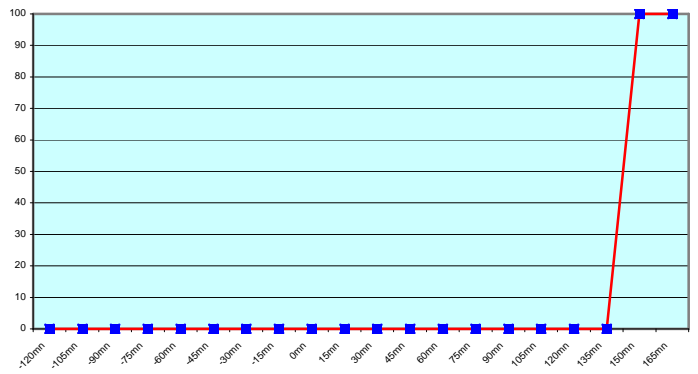
JCCX (23 report parts) Exeter 23



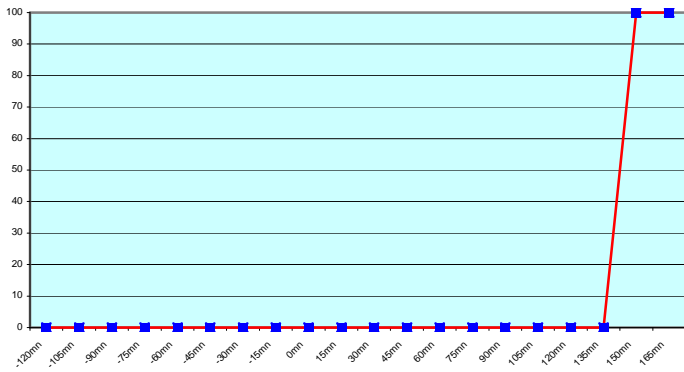
JDWX (19 report parts) Exeter 19



JGQH (234 report parts) Exeter 234



JIVB (2 report parts) Exeter 2



All of the European ships results are good.

Japanese ships follow a different procedure with an important shift between the sending of the message and the synoptic hour. By consequence, the shape of the curve of messages received from Exeter is different from what expected.

For any comment or remark please contact Météo-France Toulouse DSO/DOA department

Gérard Rey ([gerard.rey@meteo.fr](mailto:gerard.rey@meteo.fr))

Daniel Bouchara ([daniel.bouchara@meteo.fr](mailto:daniel.bouchara@meteo.fr))

Hugues Jardat ([hugues.jardat@meteo.fr](mailto:hugues.jardat@meteo.fr))

