

Joint WMO/IOC Technical Commission for
Oceanography - Ship Observation Team

**End-to-end report of the
ASAP data dissemination
performance
2009
January to December**

1. Introduction

Météo-France is in charge of a end-to-end report of the ASAP data dissemination performance.

The matter of this paper is to evaluate the results of the last year (January 2009 – December 2009).

2. Information available at Météo-France

TEMP-SHIP messages are received at LFPW (Toulouse) from EGRR (Exeter), EDZW (Offenbach) and Email.

The following information is available :

Reception at LFPW	Broadcast by LFPW
Call sign	Call sign
Header	Channel
Channel	Broadcast date
Reception date	Time lapse
Size	Broadcast size
Format	Recipient
Error	
Operator	

3. List of call signs available

Country	Call sign	Country	Call sign
Denmark	ASDK01	Japan	JCCX
	ASDK02		JGQH
	ASDK3		JIVB
E-ASAP	ASEU01		JDWX
	ASEU02		JNSR
	ASEU03	Norway	LDWR
	ASEU04	South Africa	ZSAF
	ASEU05	Spain	ASES01
France	ASFR1	United Kingdom	ASGB01
	ASFR2	USA	WTEC
Germany	ASDE01	Iceland	ASIS01
	ASDE02	Australia	3FPI7
	ASDE03		
	ASDE04	Test	SHIP
	DBLK		ASDE09
	DFCG		

4. Origin of the messages

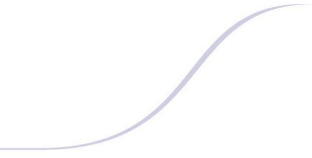
Call sign	Offenbach	Exeter	Telex	Email	Mariner	Supervis	X25
ASEU01	970	0	0	0	0	0	0
ASEU02	1167	0	0	0	0	0	0
ASEU03	524	0	0	0	0	0	0
ASEU04	1076	0	0	0	0	0	0
ASEU05	1326	0	0	0	0	0	0
ASDE01	1457	0	0	0	0	0	0
ASDE02	1148	0	0	0	0	0	0
ASDE03	962	0	0	0	0	0	0
ASDE04	1865	0	0	0	0	0	0
DBLK	1150	0	0	0	0	0	0
DFCG	209	0	0	0	0	0	0
ASGB01	795	0	0	0	0	0	0
ASDK01	1116	1031	0	0	0	0	0
ASDK02	1118	0	0	0	0	0	0
ASDK3	1211	2	0	0	0	0	0
ASES01	0	0	0	462	0	2	0
ASFR1	0	0	0	935	0	25	0
ASFR2	0	0	0	967	0	4	0
LDWR	4933	0	0	0	0	0	0
JCCX	0	101	0	0	0	0	0
JGQH	0	462	0	0	0	0	0
JIVB	0	47	0	0	0	0	0
JDWX	0	208	0	0	0	0	0
JNSR	0	529	0	0	0	0	0
Test							
ASDE09	264	0	0	0	0	0	0
Wrong or strange call-sign							
ASBG01	10	0	0	0	0	0	0
XXXXX	952	2896	0	185	4	2	0
numer.	17	0	0	26	0	1	0

Mariner: French navy military sounding
 Supervis: handled by operator

5. Global system performance

Month	Origin	Nb of messages received	Nb of messages in error	Percentage of messages in error	Nb of messages with operator action	Percentage of messages with operator action
2009-Jan	Offenbach	1523	0	0		
	Exeter	370	1	0,27		
	Telex	0	not relevant	not relevant		
	Email	220	not relevant	not relevant		
	Mariner	0	not relevant	not relevant		
	X25	0	not relevant	not relevant		
	Supervis	4	4	100		
	Total	1893	1	0,05	4	0,21
2009-Feb	Offenbach	1624	0	0		
	Exeter	394	0	0		
	Telex	0	not relevant	not relevant		
	Email	209	not relevant	not relevant		
	Mariner	8	not relevant	not relevant		
	X25	0	not relevant	not relevant		
	Supervis	1	0	0		
	Total	2018	0	0	1	0,05
2009-Mar	Offenbach	1815	0	0		
	Exeter	288	0	0		
	Telex	0	not relevant	not relevant		
	Email	195	not relevant	not relevant		
	Mariner	0	not relevant	not relevant		
	X25	0	not relevant	not relevant		
	Supervis	0	0	not relevant		
	Total	2103	0	0	0	0
2009-Apr	Offenbach	1707	0	0		
	Exeter	356	0	0		
	Telex	0	not relevant	not relevant		
	Email	145	not relevant	not relevant		
	Mariner	0	not relevant	not relevant		
	X25	1	not relevant	not relevant		
	Supervis	6	3	50		
	Total	2063	0	0	6	0,29
2009-May	Offenbach	1904	0	0		
	Exeter	563	0	0		
	Telex	0	not relevant	not relevant		
	Email	255	not relevant	not relevant		
	Mariner	0	not relevant	not relevant		
	X25	0	not relevant	not relevant		
	Supervis	8	6	75		
	Total	2467	0	0	8	0,32
2009-Jun	Offenbach	1947	0	0		
	Exeter	391	0	0		
	Telex	0	not relevant	not relevant		
	Email	251	not relevant	not relevant		
	Mariner	0	not relevant	not relevant		
	X25	0	not relevant	not relevant		
	Supervis	9	3	33,33		
	Total	2338	0	0	9	0,38

2009-Jul	Offenbach	2224	4	0,18		
	Exeter	511	0	0		
	Telex	0	not relevant	not relevant		
	Email	244	not relevant	not relevant		
	Mariner	0	not relevant	not relevant		
	X25	0	not relevant	not relevant		
	Supervis	1	0	0		
	Total	2735	4	0,15	1	0,04
2009-Aug	Offenbach	1810	0	0		
	Exeter	381	0	0		
	Telex	0	not relevant	not relevant		
	Email	257	not relevant	not relevant		
	Mariner	0	not relevant	not relevant		
	X25	0	not relevant	not relevant		
	Supervis	0	0	not relevant		
	Total	2191	0	0	0	0
2009-Sep	Offenbach	1719	0	0		
	Exeter	677	0	0		
	Telex	0	not relevant	not relevant		
	Email	138	not relevant	not relevant		
	Mariner	0	not relevant	not relevant		
	X25	0	not relevant	not relevant		
	Supervis	1	0	0		
	Total	2396	0	0	1	0,04
2009-Oct	Offenbach	2195	0	0		
	Exeter	655	0	0		
	Telex	0	not relevant	not relevant		
	Email	227	not relevant	not relevant		
	Mariner	0	not relevant	not relevant		
	X25	0	not relevant	not relevant		
	Supervis	4	3	75		
	Total	2850	0	0	4	0,14
2009-Nov	Offenbach	2049	0	0		
	Exeter	442	4	0,9		
	Telex	0	not relevant	not relevant		
	Email	245	not relevant	not relevant		
	Mariner	0	not relevant	not relevant		
	X25	0	not relevant	not relevant		
	Supervis	0	0	not relevant		
	Total	2491	4	0,16	0	0
2009-Dec	Offenbach	1753	0	0		
	Exeter	248	0	0		
	Telex	0	not relevant	not relevant		
	Email	189	not relevant	not relevant		
	Mariner	0	not relevant	not relevant		
	X25	0	not relevant	not relevant		
	Supervis	0	0	not relevant		
	Total	2001	0	0	0	0
Total	Offenbach	22270	4	0,02		
	Exeter	5276	5	0,09		
	Telex	0	0	not relevant		
	Email	2575	2575	100		
	Mariner	8	not relevant	not relevant		
	X25	1	not relevant	not relevant		
	Supervis	34	19	55,88		
	Total	30164	9	0,03	34	0,12



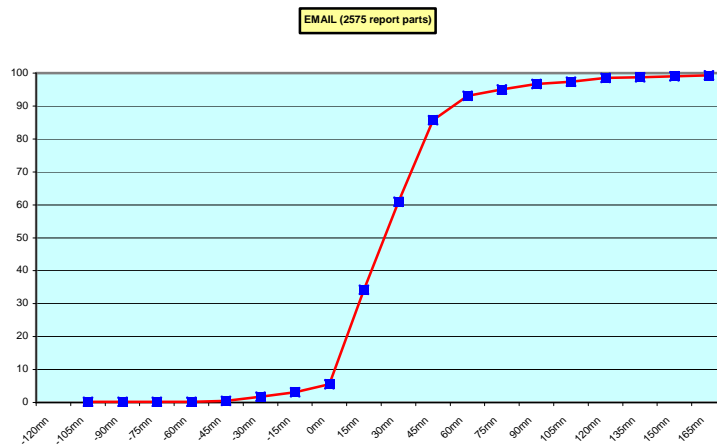
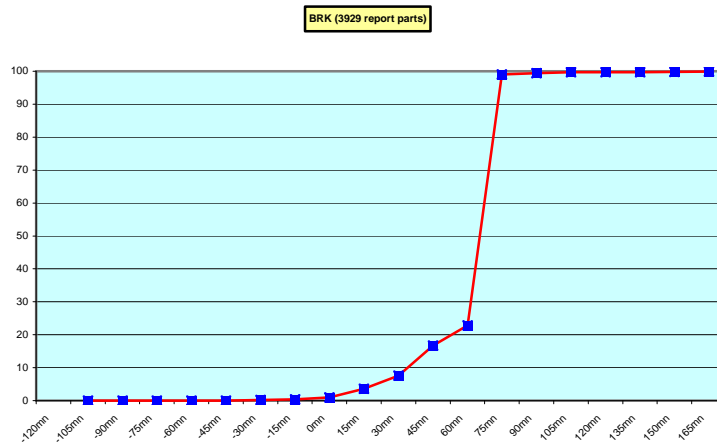
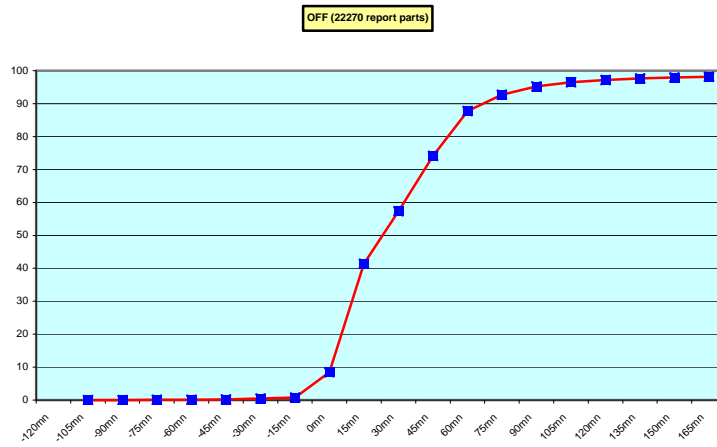
Remark: Email messages were excluded from the number of messages in error and from the relative percentage as values are regarded as not relevant. Not relevant percentages are due to not relevant values or to a total amount of data equal to zero.

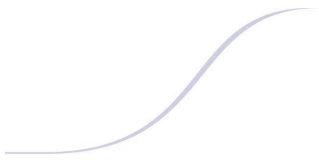
6. Global result of the syntactic check for the messages for each call sign.

Call sign	Nb of messages received	Nb of messages in error	Percentage of messages in error	Nb of messages with operator action	Percentage of messages with operator action
ASEU01	970	0	0	0	0
ASEU02	1167	0	0	0	0
ASEU03	524	0	0	0	0
ASEU04	1076	0	0	0	0
ASEU05	1326	0	0	0	0
ASDE01	1457	0	0	0	0
ASDE02	1148	0	0	0	0
ASDE03	962	0	0	0	0
ASDE04	1865	0	0	0	0
DBLK	1150	0	0	0	0
DFCG	209	0	0	0	0
ASGB01	795	0	0	0	0
ASDK01	2147	2	0,09	0	0
ASDK02	1118	0	0	0	0
ASDK3	1213	0	0	0	0
ASES01	464	0	0	2	0,43
ASFR1	960	18	1,88	25	2,6
ASFR2	971	0	0	4	0,41
LDWR	4933	0	0	0	0
JCCX	101	1	0,99	0	0
JGQH	462	0	0	0	0
JIVB	47	0	0	0	0
JDWX	208	0	0	0	0
JNSR	529	0	0	0	0
Test					
ASDE09	264	4	1,52	0	0
Wrong or strange call-sign					
ASBG01	10	0	0	0	0
XXXXX	4039	2	0,05	2	0,05
numer.	44	1	2,27	1	2,27

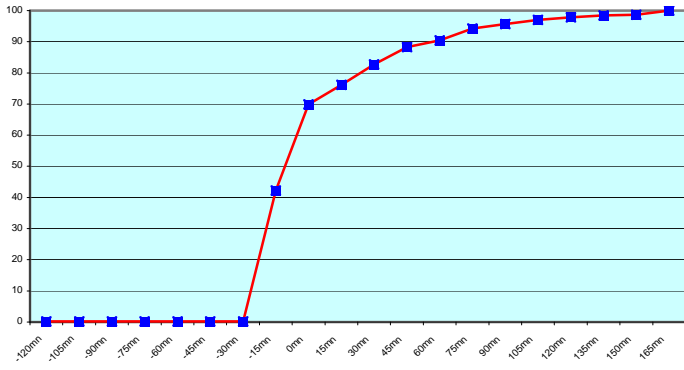
Remark: Data transmitted through email displayed an error rate close to 100% due to email syntax and were thus regarded as not relevant and excluded from errors total amount.

7. Mean time before the integration of the messages in the GTS in Toulouse. HH is the synoptic hour of reference.

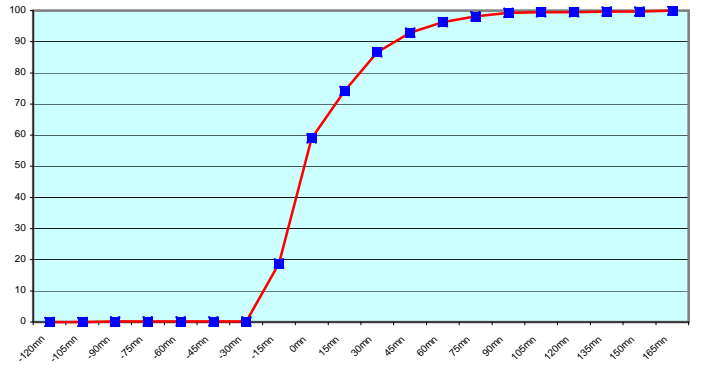




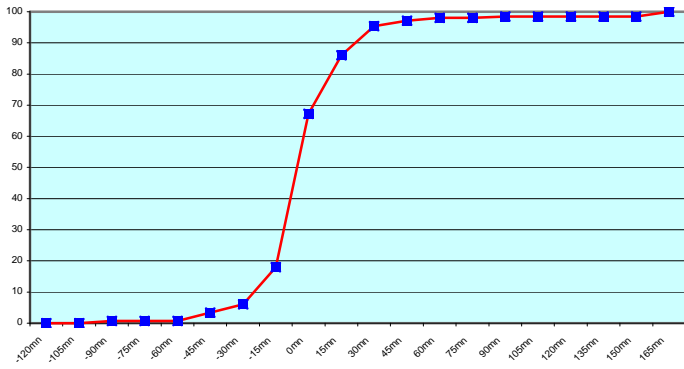
ASEU01 (970 report parts) Offenbach 970



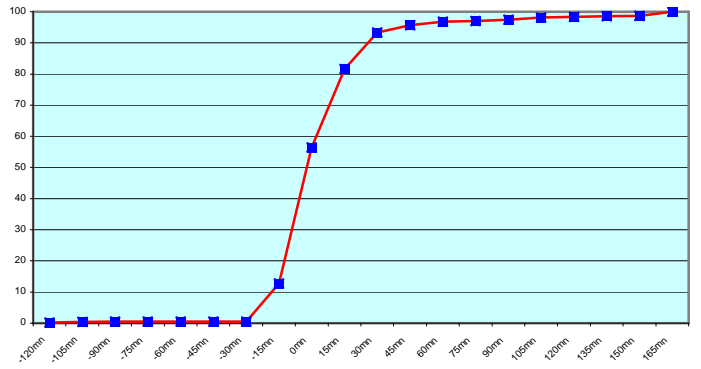
ASEU02 (1167 report parts) Offenbach 1167



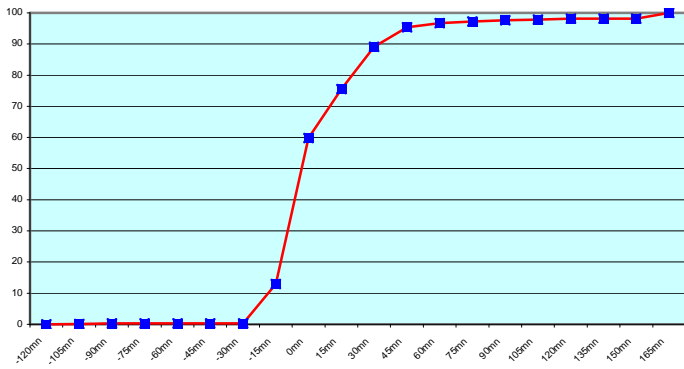
ASEU03 (524 report parts) Offenbach 524



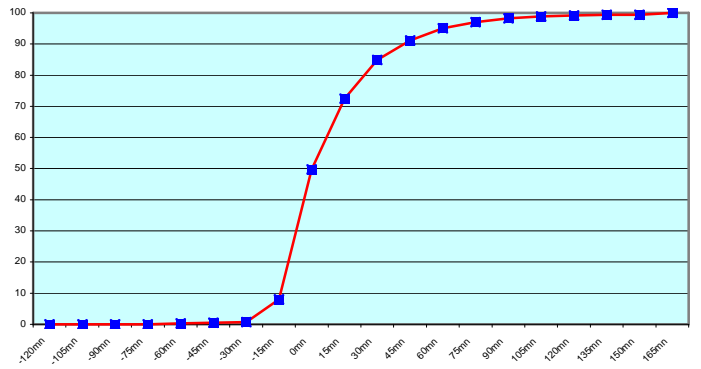
ASEU04 (1076 report parts) Offenbach 1076



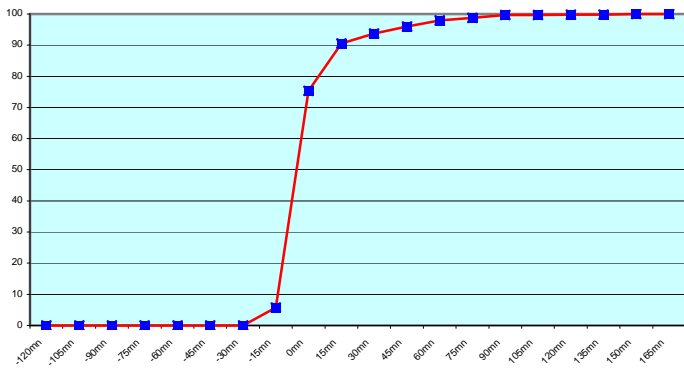
ASEU05 (1326 report parts) Offenbach 1326



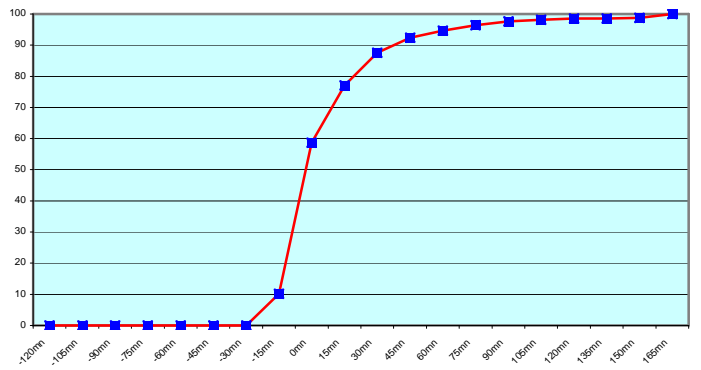
ASDE01 (1457 report parts) Offenbach 1457

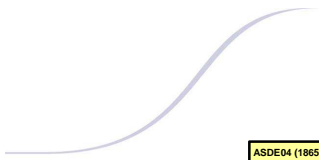


ASDE02 (1148 report parts) Offenbach 1148

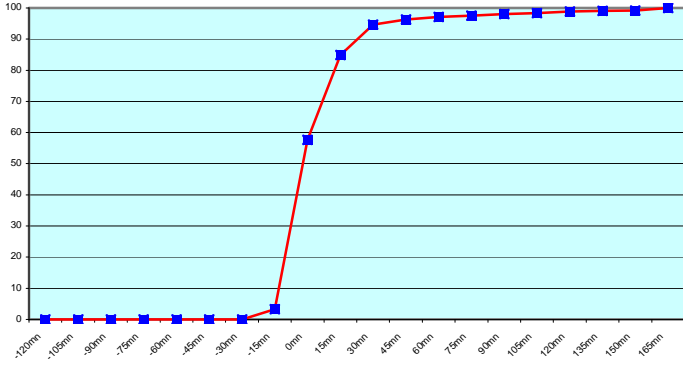


ASDE03 (962 report parts) Offenbach 962

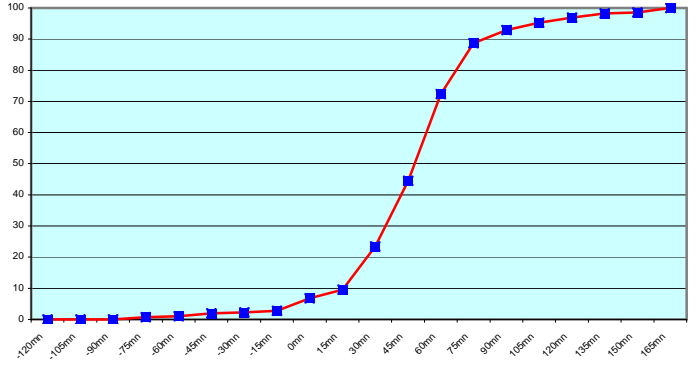




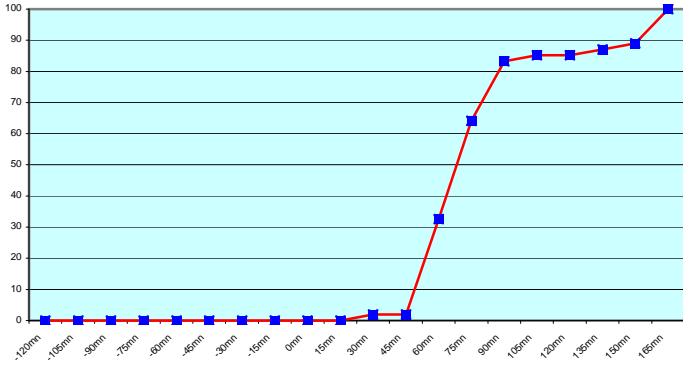
ASDE04 (1865 report parts) Offenbach 1865



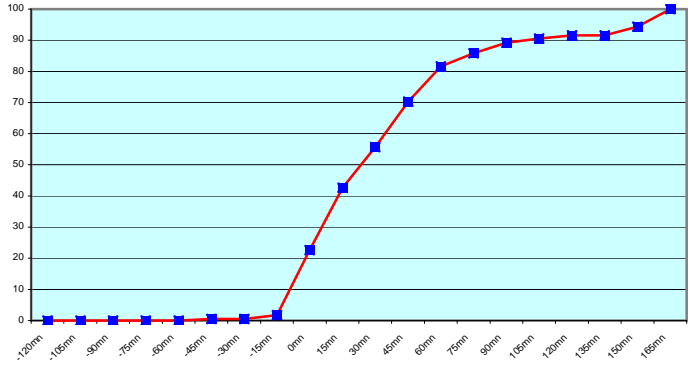
DBLK (1150 report parts) Offenbach 1150



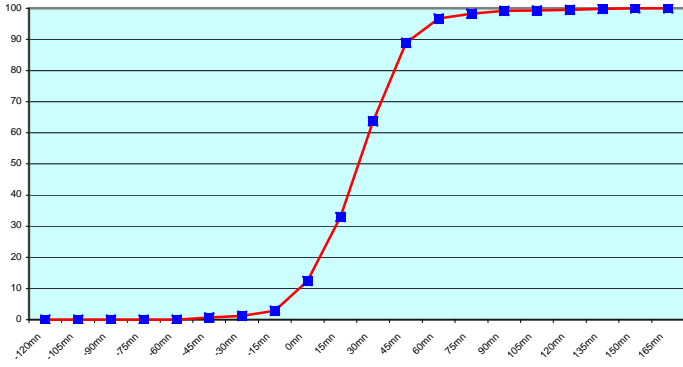
DFCG (209 report parts) Offenbach 209



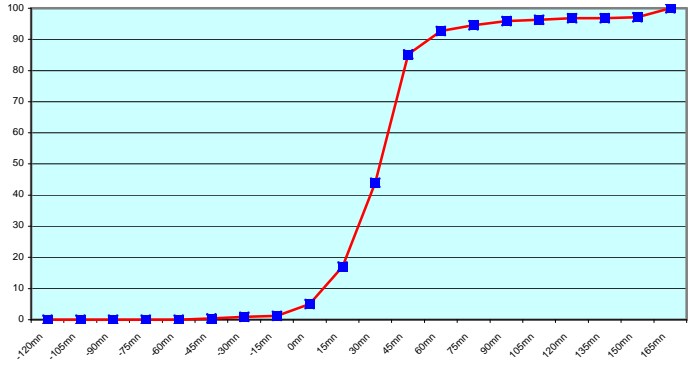
ASGB01 (795 report parts) Offenbach 795



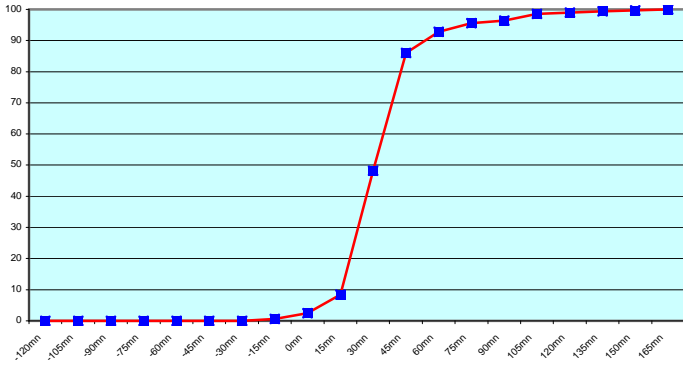
ASDK01 (2147 report parts) Offenbach 1116 Exeter 1031



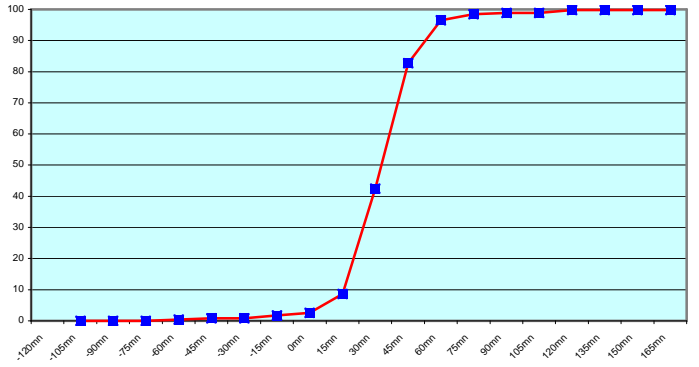
ASDK02 (1118 report parts) Offenbach 1118

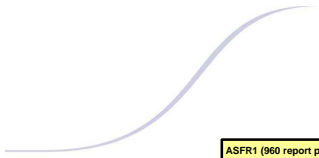


ASDK3 (1213 report parts) Offenbach 1211 Exeter 2

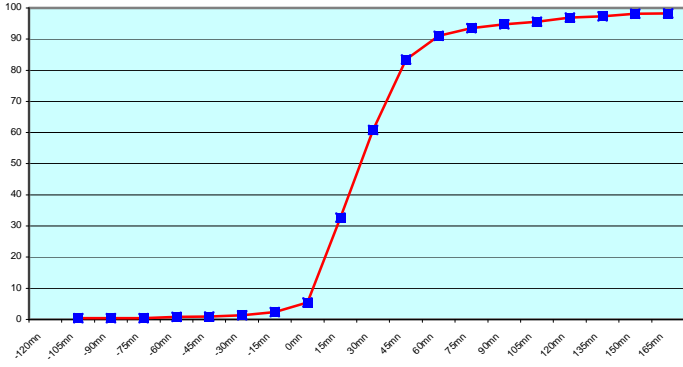


ASES01 (464 report parts) Email 462 with supervision 2

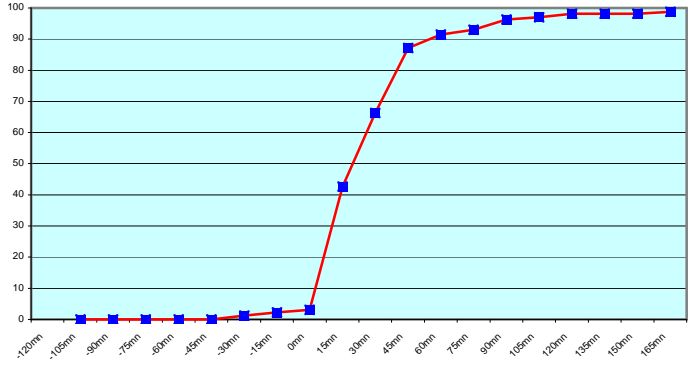




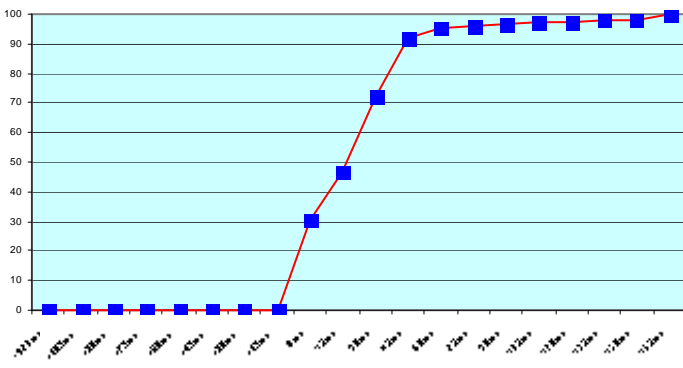
ASFR1 (960 report parts) Email 935 with supervision 25



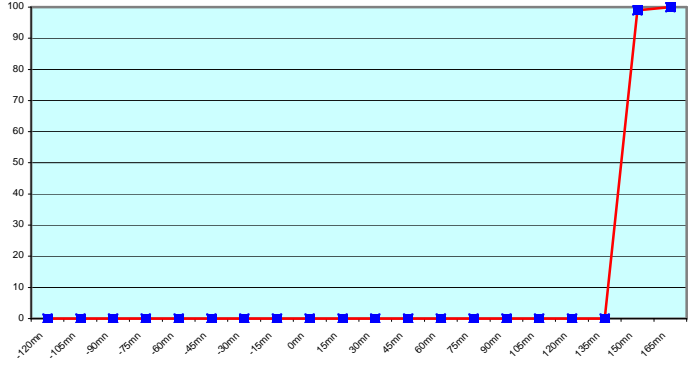
ASFR2 (971 report parts) Email 967 with supervision 4



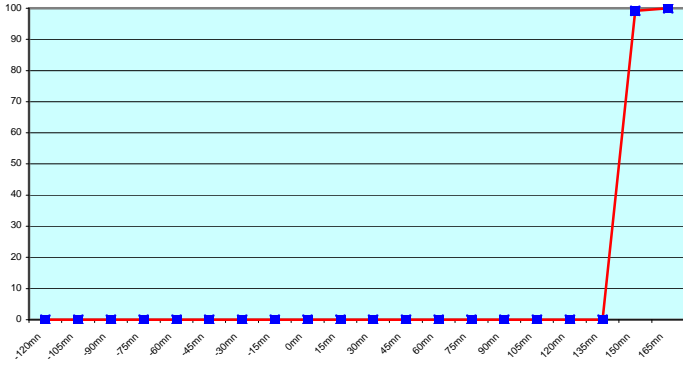
LDWR (4933 report parts) Offenbach 4933



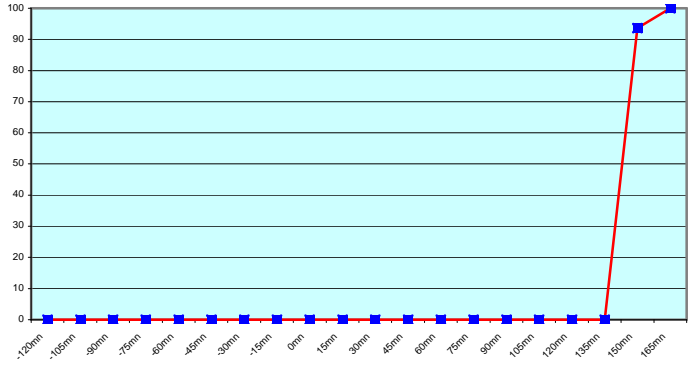
JCCX (101 report parts) Exeter 101



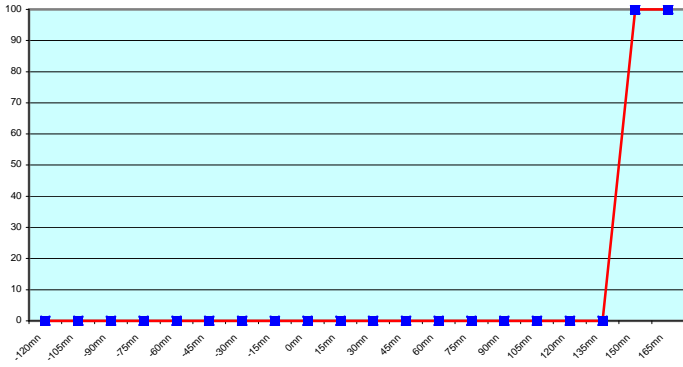
JGQH (462 report parts) Exeter 462



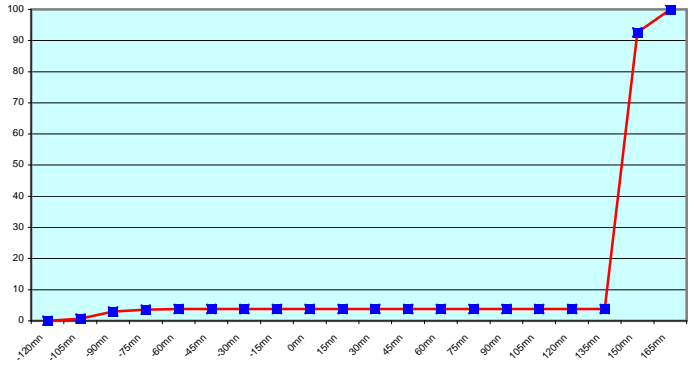
JIVB (47 report parts) Exeter 47

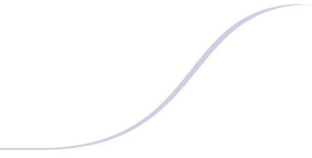


JDWX (208 report parts) Exeter 208



JNSR (529 report parts) Exeter 529





During 2009, Météo-France Toulouse received 7541 upper air messages (TEMP) from ships and platform.

This number of messages is higher than it was in 2008 (7048).

The reports were received from 25 different call signs; one of them was a test call sign.

The quality of the ASAP reports was generally of a high standard, with only a small percentage of erroneous data.

Some corrupted call signs can be seen from time to time but with a frequency much lower than in 2008.

For any comment or remark please contact Météo-France Toulouse DSO/DOA department

Gérard Rey (gerard.rey@meteo.fr)

Daniel Bouchara (daniel.bouchara@meteo.fr)

Hugues Jardat (hugues.jardat@meteo.fr)