

Figure 1: Number of observations of pressure received at Exeter on the GTS for each of the six-month periods covered by the WMO reports on the quality of marine surface observations

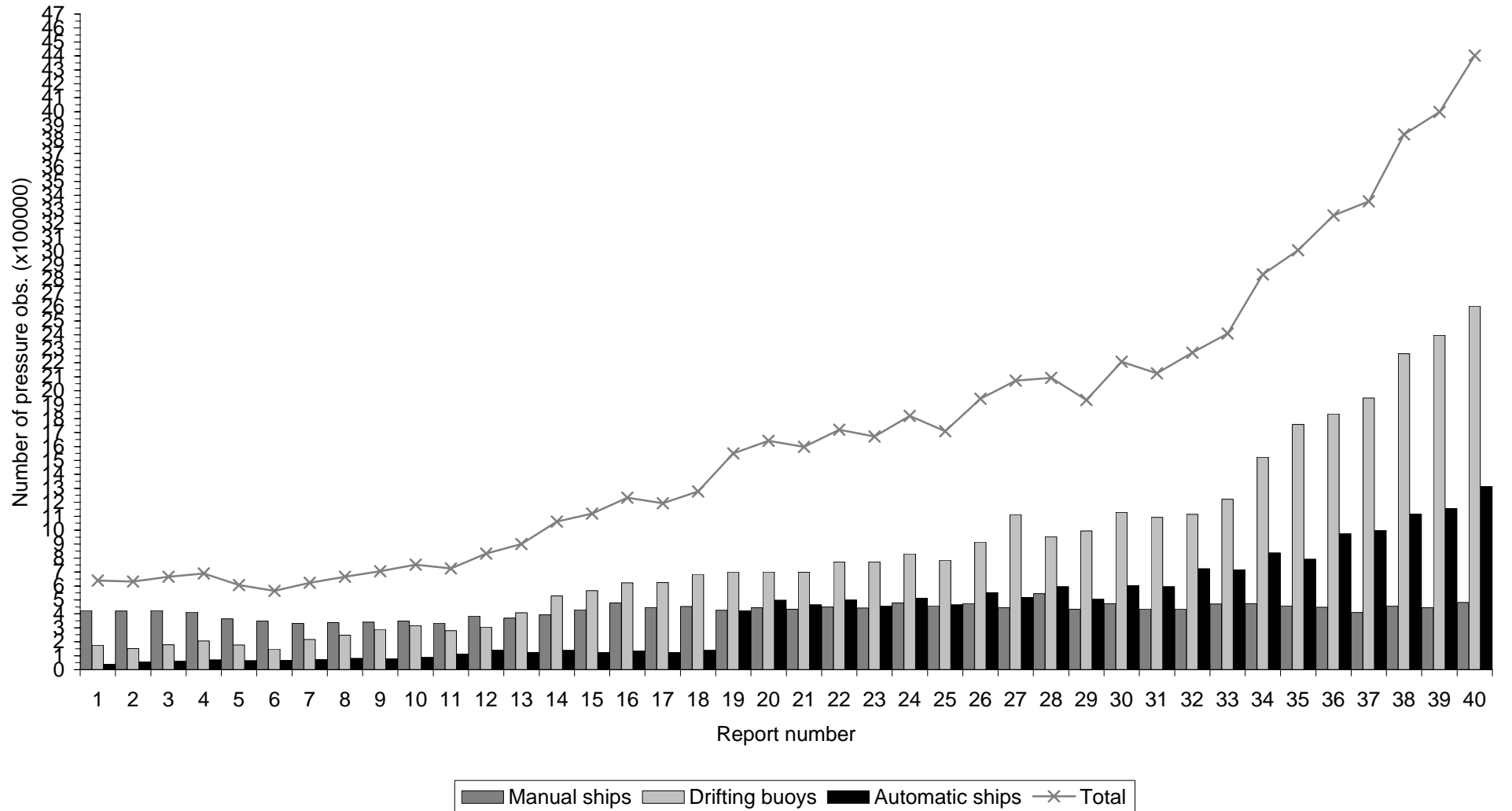


Figure 2a: Distribution of ship O-B pressure (hPa)
Period of data: JUL-DEC 2008 Data used: All observations

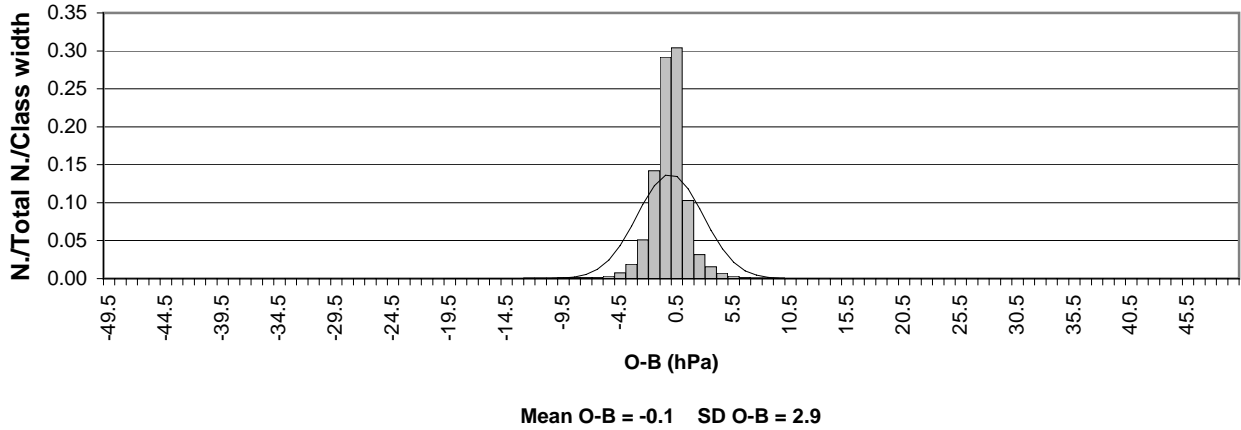


Figure 2b: Distribution of ship O-B pressure (hPa)
Period of data: JUL-DEC 2008 Data used: Flagged observations

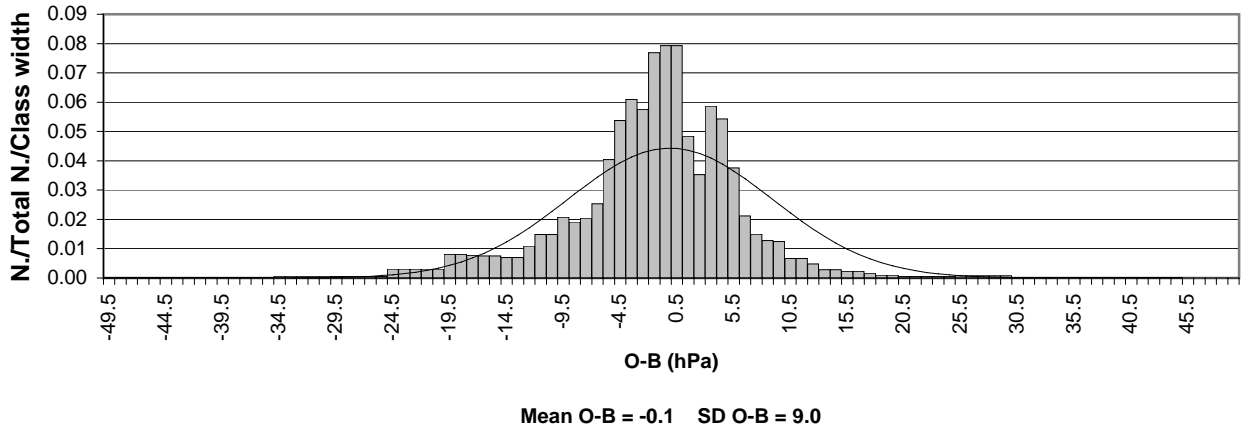


Figure 2c: Distribution of ship O-B pressure (hPa)
Period of data: JUL-DEC 2008 Data used: Unflagged observations

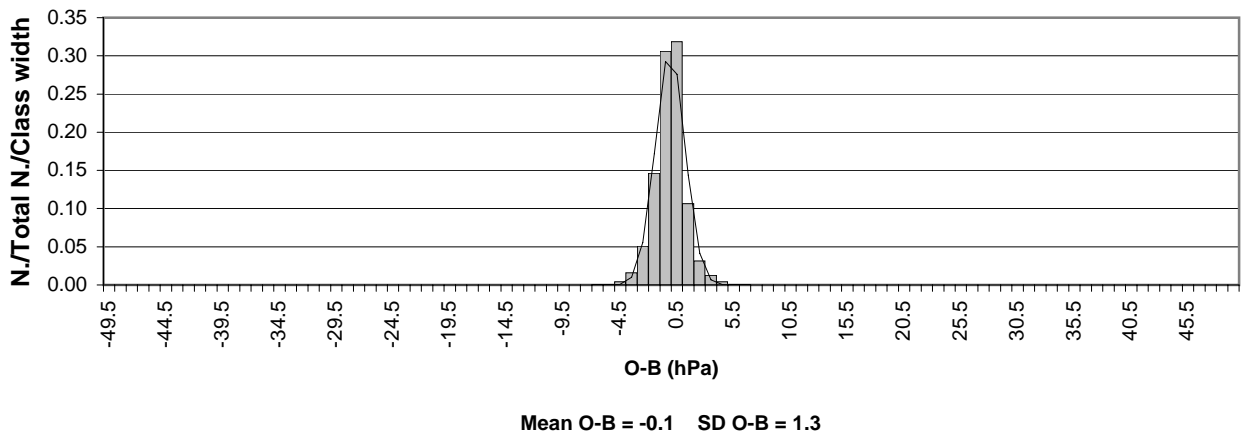


Figure 2d: Distribution of ship O-B wind speed (ms^{-1})
Period of data: JUL-DEC 2008 Data used: All observations

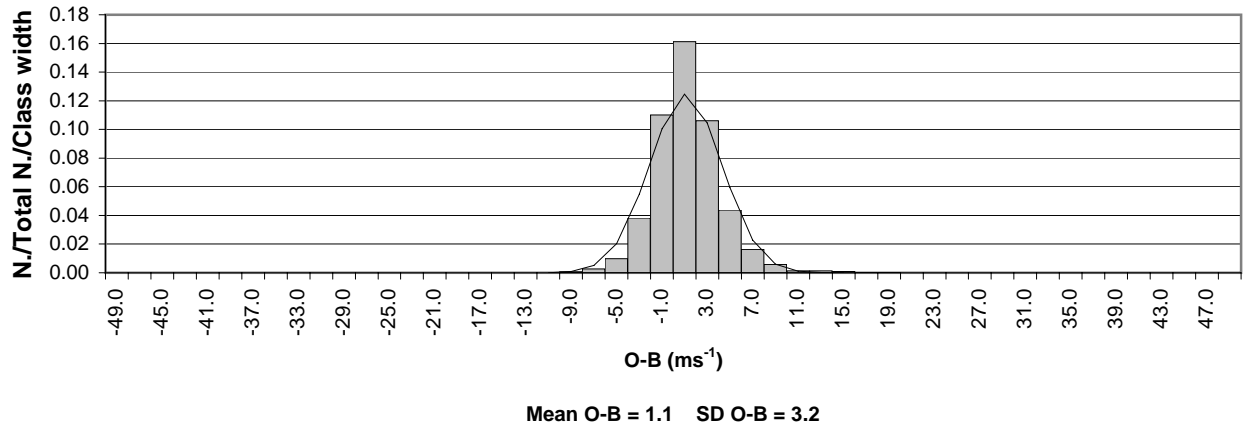


Figure 2e: Distribution of ship O-B wind speed (ms^{-1})
Period of data: JUL-DEC 2008 Data used: Flagged observations

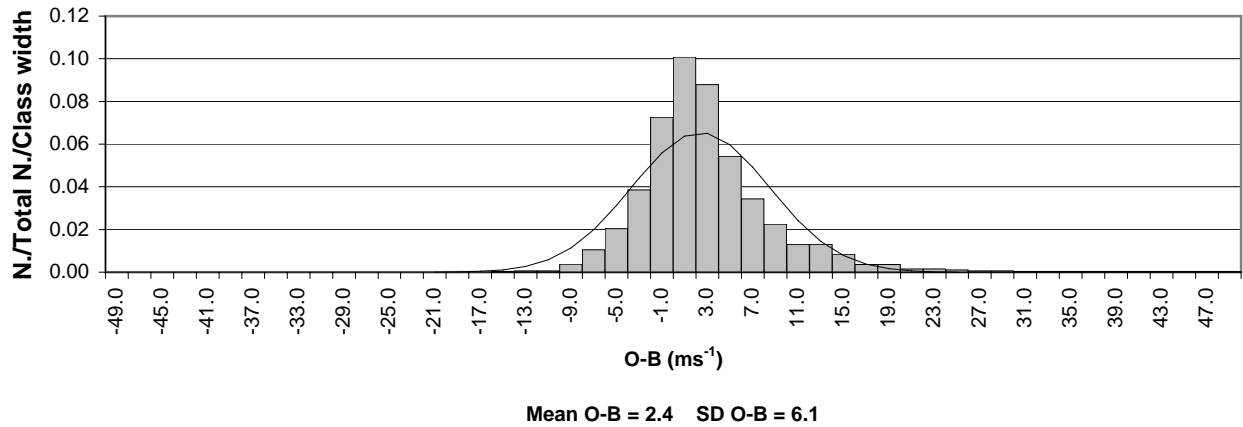


Figure 2f: Distribution of ship O-B wind speed (ms^{-1})
Period of data: JUL-DEC 2008 Data used: Unflagged observations

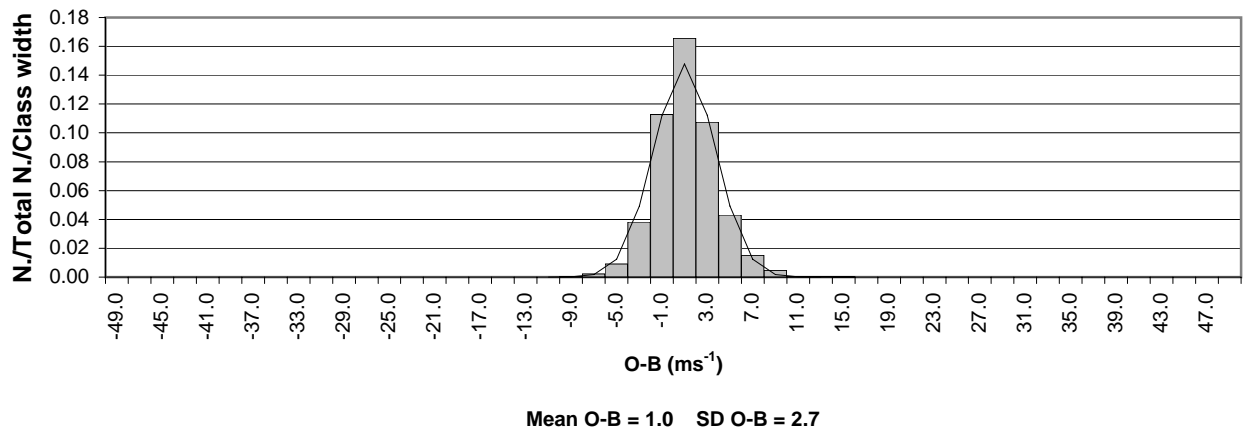


Figure 2g: Distribution of ship O-B wind direction (degrees)
Period of data: JUL-DEC 2008 Data used: All observations

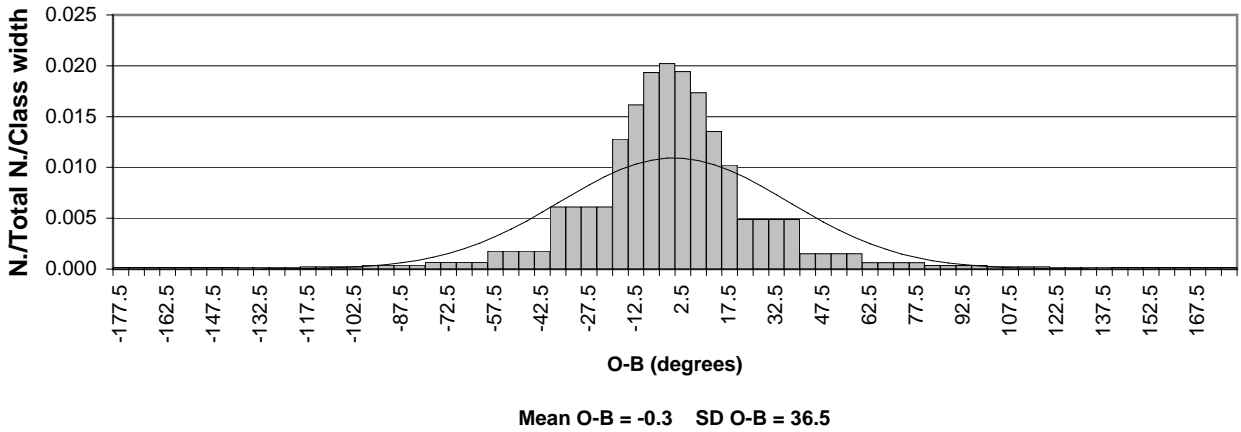


Figure 2h: Distribution of ship O-B wind direction (degrees)
Period of data: JUL-DEC 2008 Data used: Flagged observations

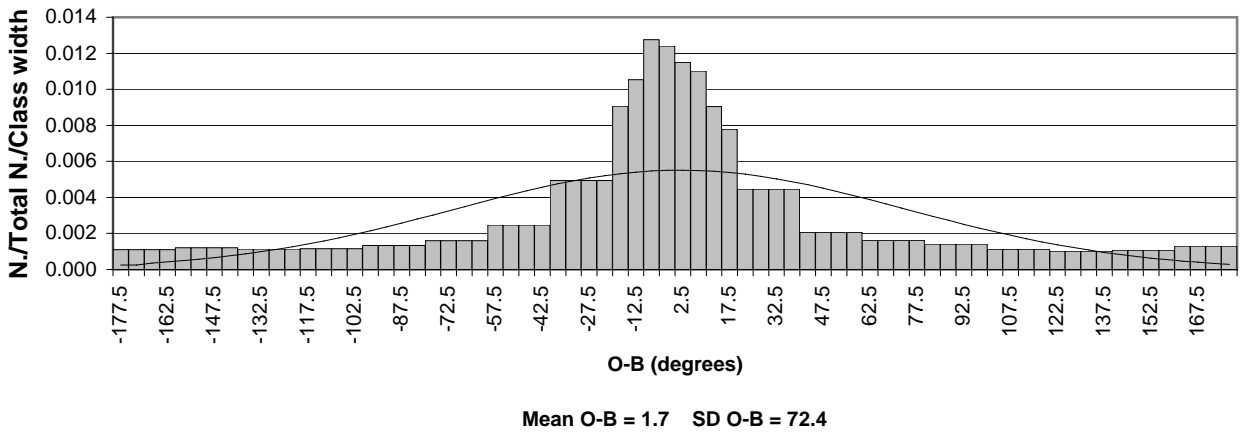


Figure 2i: Distribution of ship O-B wind direction (degrees)
Period of data: JUL-DEC 2008 Data used: Unflagged observations

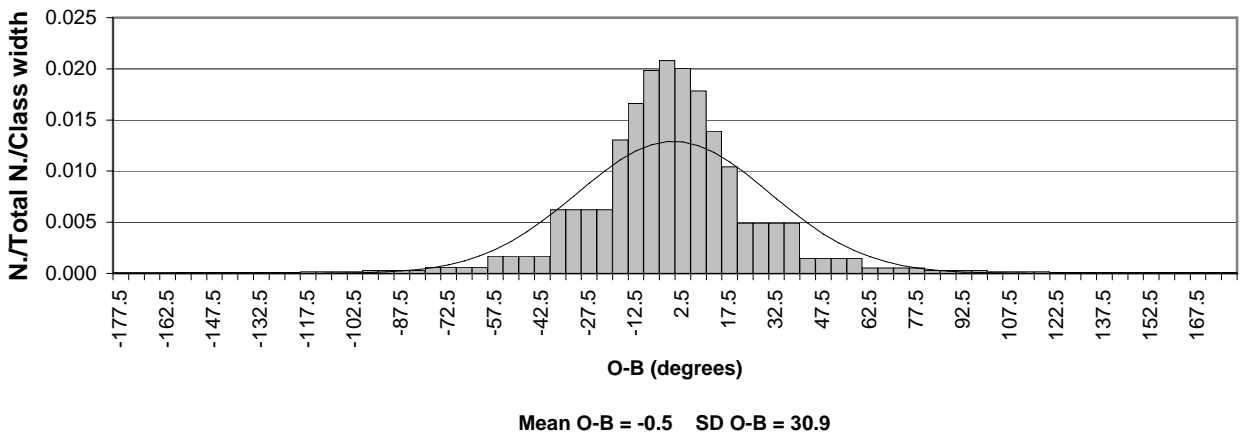


Figure 2j: Distribution of ship O-B SST (°C)
Period of data: JUL-DEC 2008 Data used: All observations

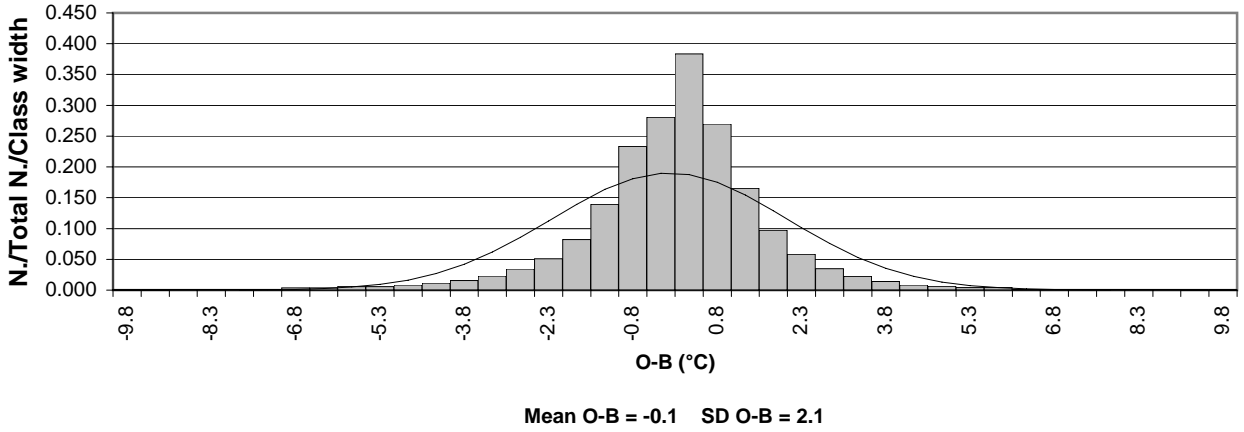


Figure 2k: Distribution of ship O-B SST (°C)
Period of data: JUL-DEC 2008 Data used: Flagged observations

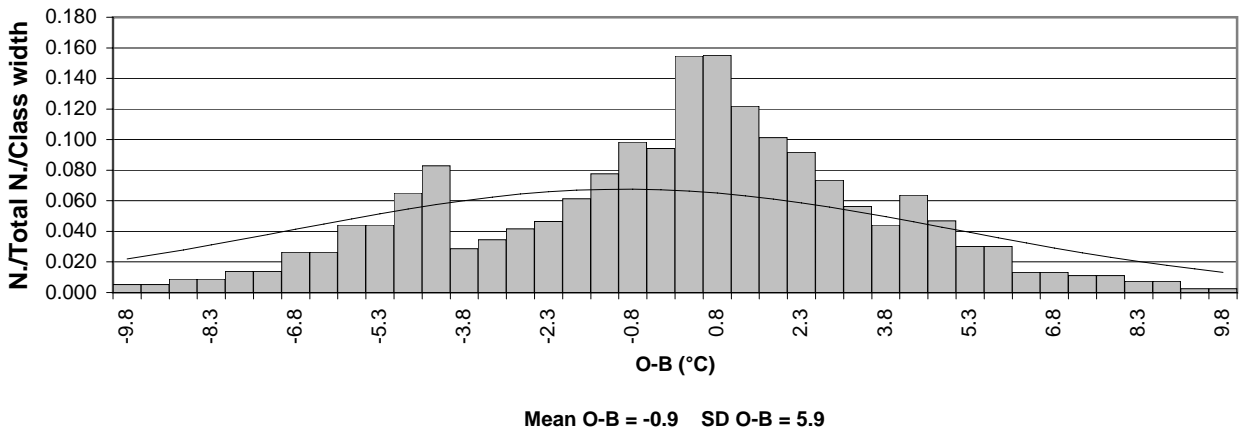


Figure 2l: Distribution of ship O-B SST (°C)
Period of data: JUL-DEC 2008 Data used: Unflagged observations

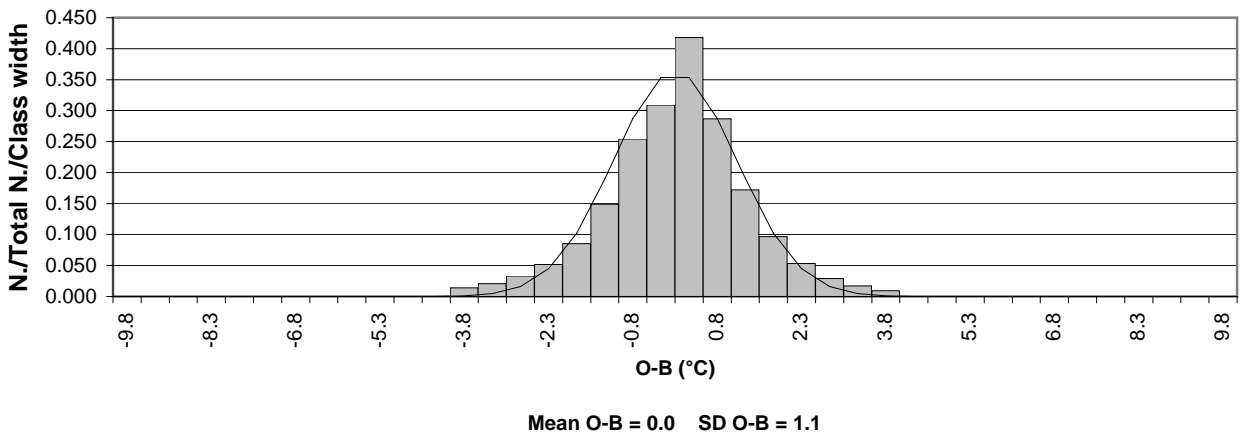


Figure 3: Bias of Ship O-B Pressure (hPa). Date:- July - December 2008
Only observations passing quality control used in statistics
Contours drawn to 10 degree boxes, if the number of observations is greater than 10
Shaded areas have a bias of magnitude greater than 1.0 hPa

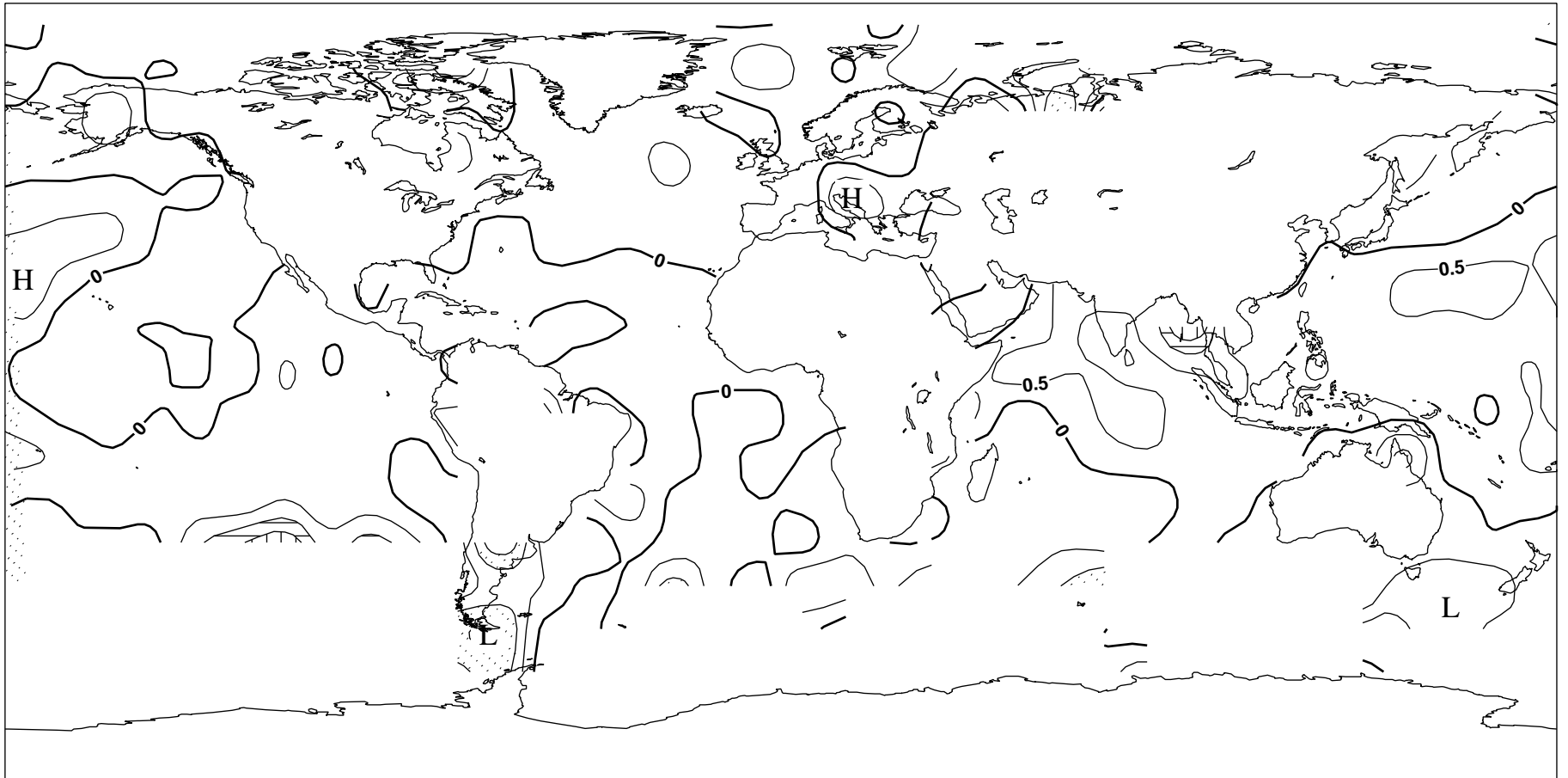


Figure 4: Standard Deviation of Ship O-B Pressure (hPa). Date:- July - December 2008
Only Observations passing quality control used in statistics
Contours drawn to 10 degree boxes, if the number of observations is greater than 10
Shaded areas have a standard deviation of greater than 2.0 hPa

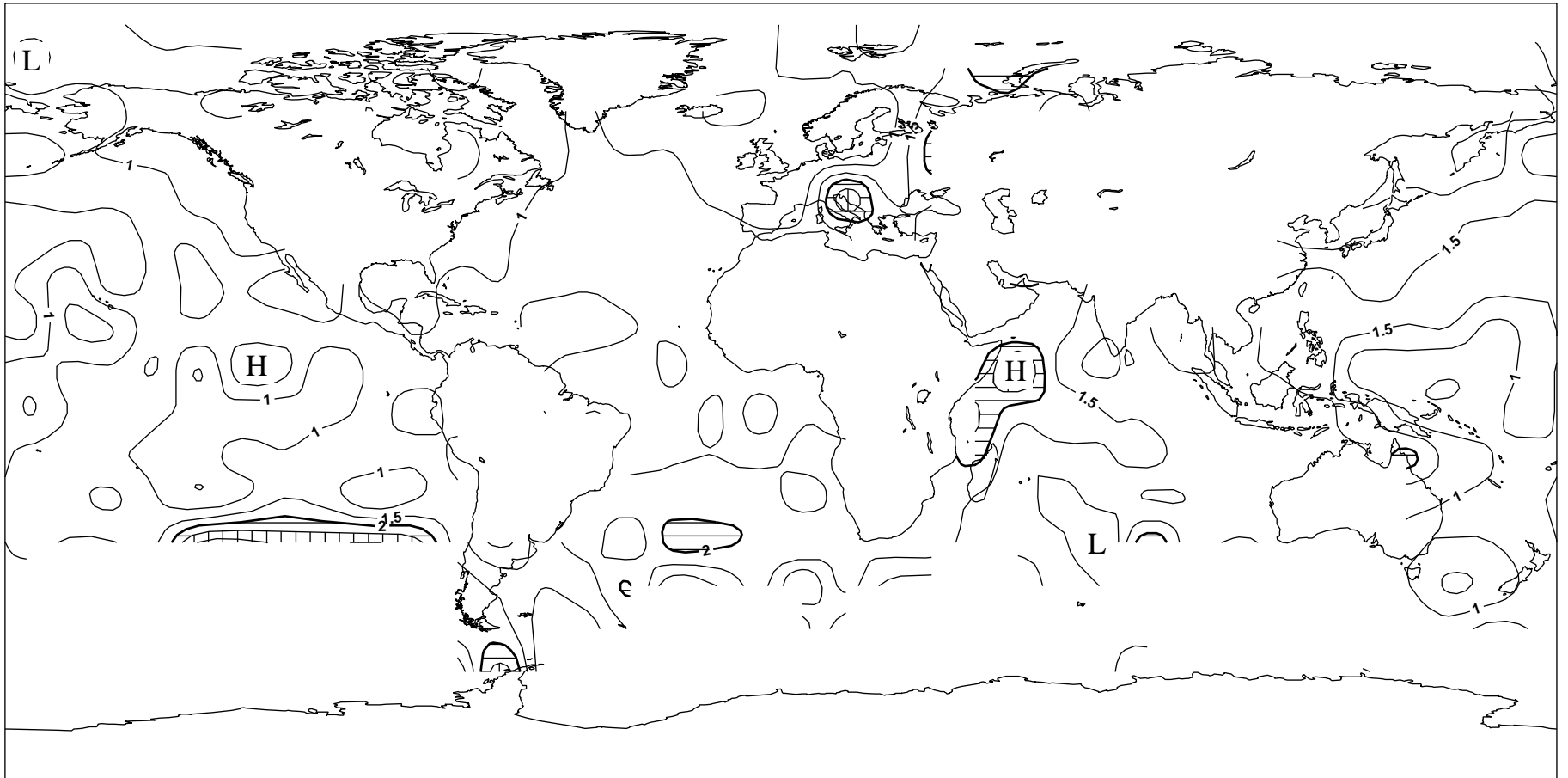


Figure 6: Bias of Ship O-B Wind Speed (ms-1). Date:- July - December 2008
Only observations passing quality control used in statistics
Contours drawn to 10 degree boxes, if the number of observations is greater than 10
Shaded areas have a bias of magnitude greater than 2.0 ms-1

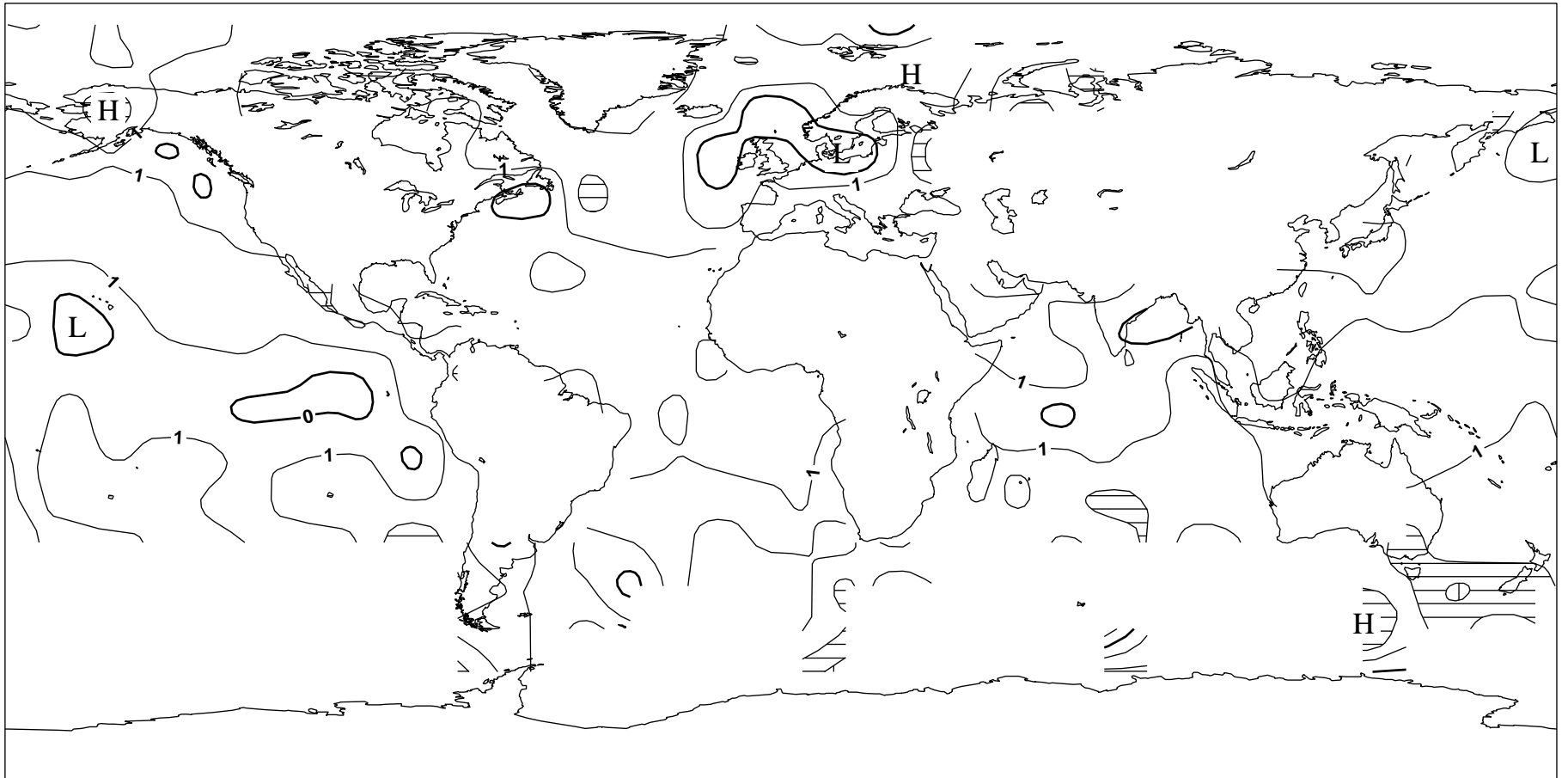


Figure 7: Standard Deviation of Ship O-B Wind Speed (ms-1). Date:- July - December 2008
Only Observations passing quality control used in statistics
Contours drawn to 10 degree boxes, if the number of observations is greater than 10
Shaded areas have a standard deviation of greater than 4.0 ms-1

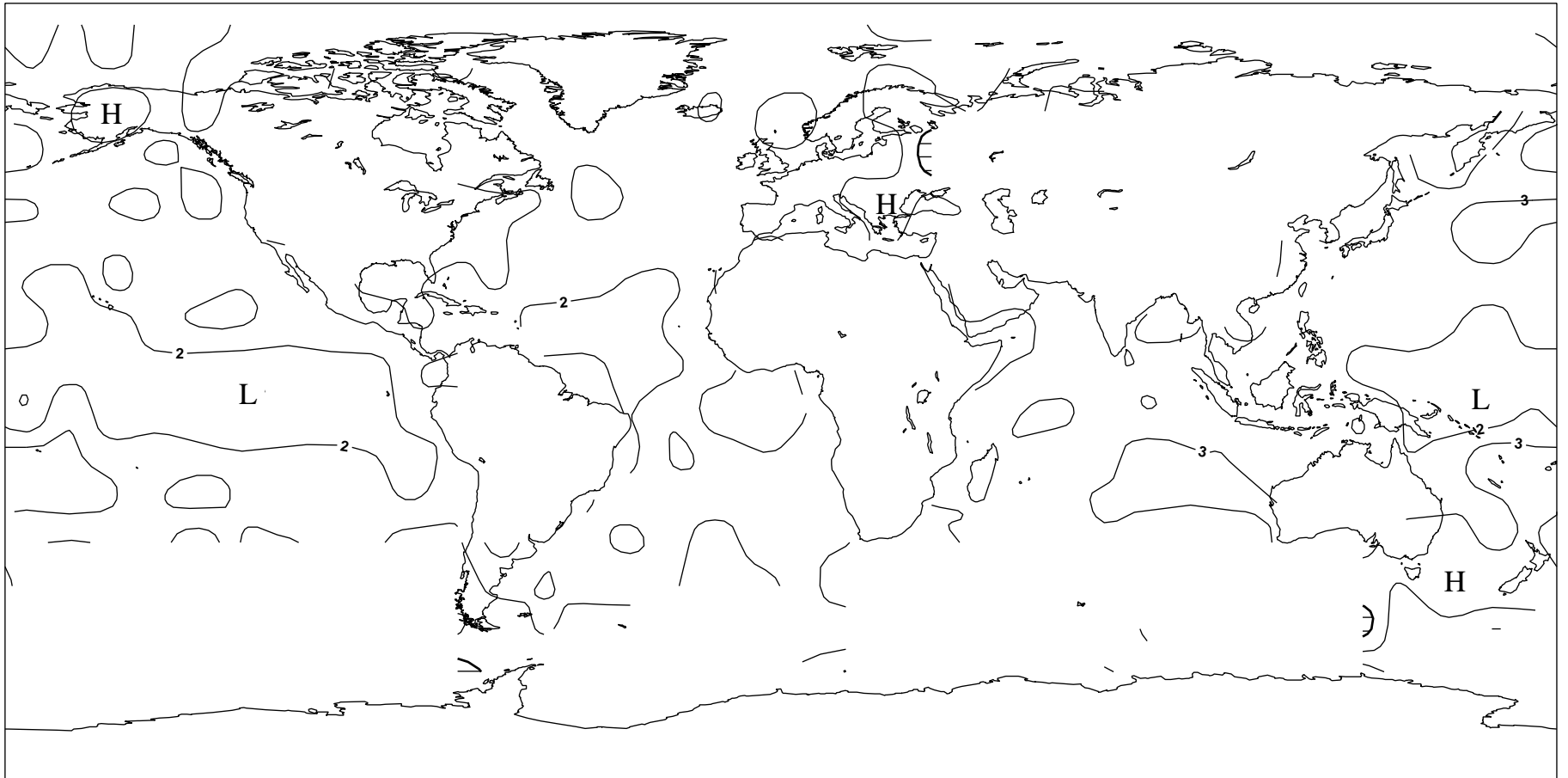


Figure 9: Bias of Ship O-B Wind Direction (degrees). Date:- July - December 2008
Only observations passing quality control used in statistics
Contours drawn to 10 degree boxes, if the number of observations is greater than 10
Shaded areas have a bias of magnitude greater than 10 degrees

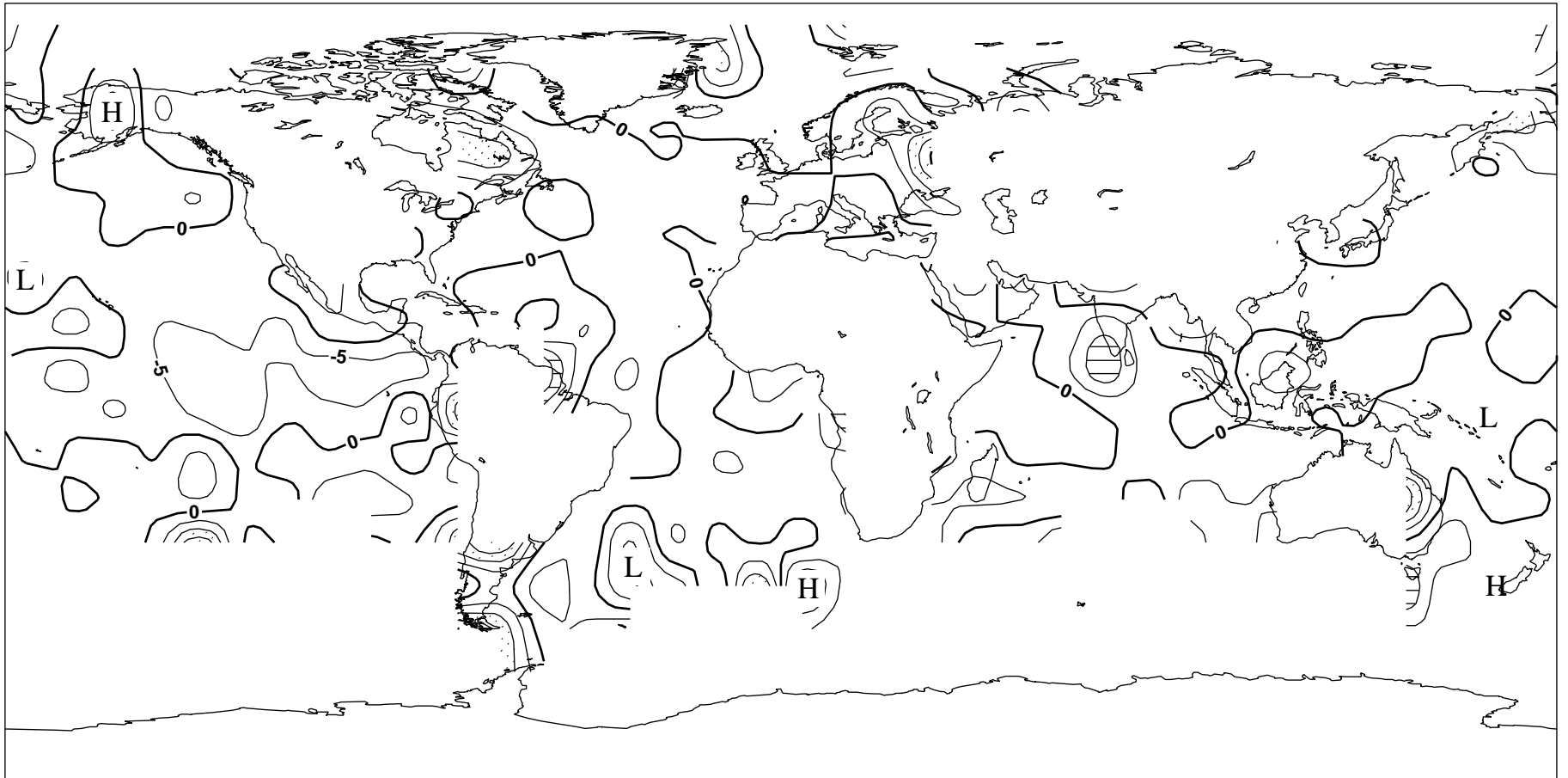


Figure 10: Standard Deviation of Ship O-B Wind Direction (degrees). Date:- July - December 2008
Only Observations passing quality control used in statistics
Contours drawn to 10 degree boxes, if the number of observations is greater than 10
Shaded areas have a standard deviation of greater than 40 degrees



Figure 12: Bias of Ship O-B SST (degrees C). Date:- July - December 2008
Only observations passing quality control used in statistics
Contours drawn to 10 degree boxes, if the number of observations is greater than 10
Shaded areas have a bias of magnitude greater than 1.0 degree C

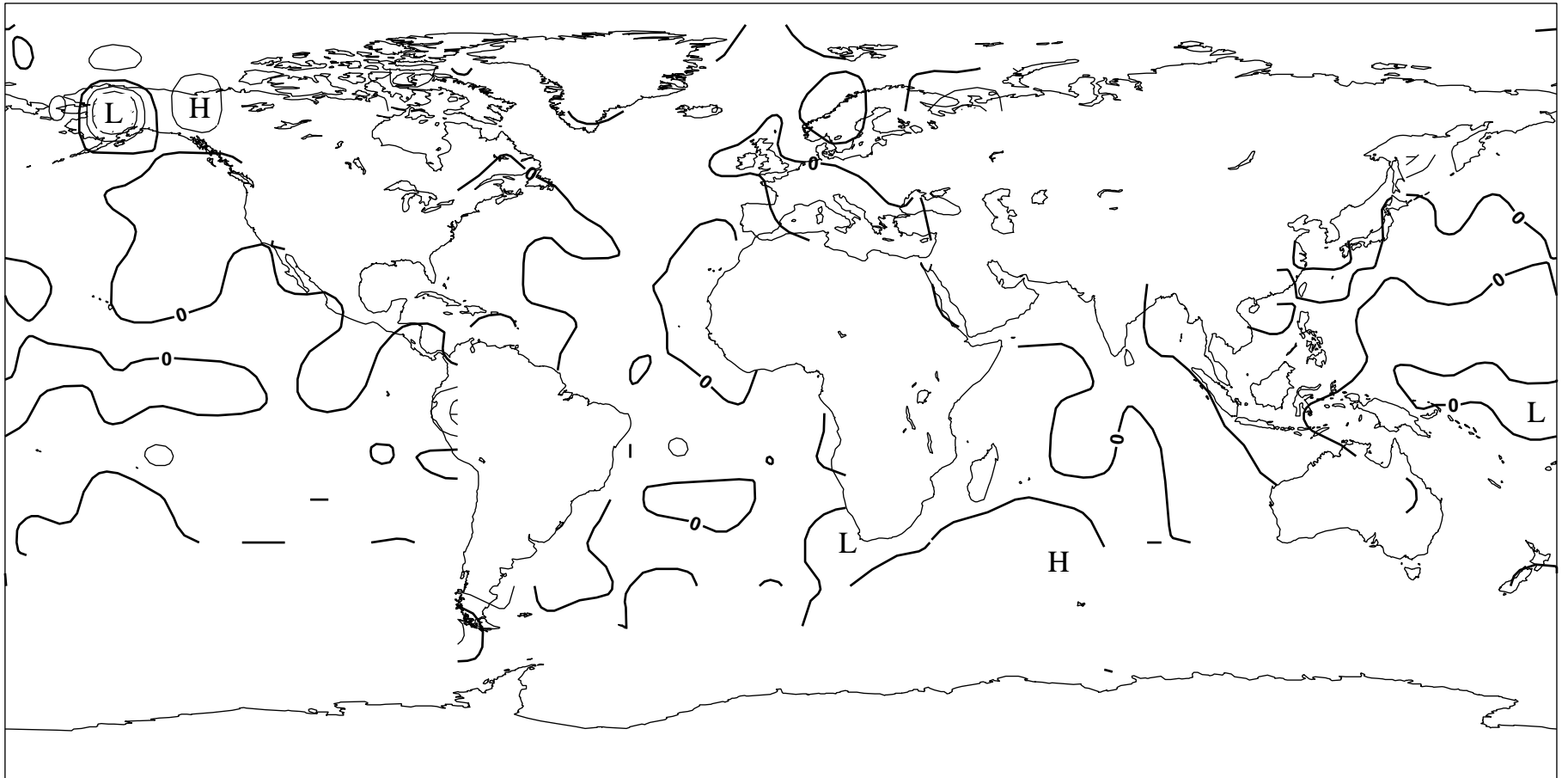


Figure 13: Standard Deviation of Ship O-B SST (degrees C). Date:- July - December 2008
Only Observations passing quality control used in statistics
Contours drawn to 10 degree boxes, if the number of observations is greater than 10
Shaded areas have a standard deviation of greater than 2.0 degrees C

