

Joint WMO/IOC Technical Commission for
Oceanography - Ship Observation Team

End-to-end report of the ASAP data dissemination performance

October to December 2008

1. Introduction

Météo-France is in charge of a end-to-end report of the ASAP data dissemination performance.

The matter of this paper is to evaluate the results of the three last months (October 2008 – December 2008).

2. Information available at Météo-France

TEMP-SHIP messages are received at LFPW (Toulouse) from EGRR (Exeter), EDZW (Offenbach) and Email.

The following information is available :

Reception at LFPW	Broadcast by LFPW
Call sign	Call sign
Header	Channel
Channel	Broadcast date
Reception date	Time lapse
Size	Broadcast size
Format	Recipient
Error	
Operator	

3. List of call signs available

Country	Call sign	Country	Call sign
Denmark	ASDK01	Japan	JCCX
	ASDK02		JGQH
	OXGN2		JIVB
E-ASAP	ASEU01		JDWX
	ASEU02		JNSR
	ASEU03	Norway	LDWR
	ASEU04	South Africa	ZSAF
	ASEU05	Spain	ASES01
France	ASFR1	United Kingdom	ASGB01
	ASFR2	USA	WTEC
Germany	ASDE01	Iceland	ASIS01
	ASDE02	Australia	3FPI7
	ASDE03		
	ASDE04	Test	SHIP
	DBLK		ASDE09

4. Origin of the messages

Call sign	Offenbach	Exeter	Telex	Email	Mariner	Supervis	X25
ASEU01	126	0	0	0	0	0	0
ASEU03	42	0	0	0	0	0	0
ASEU04	176	0	0	0	0	0	0
ASEU05	170	0	0	0	0	0	0
ASDE01	234	0	0	0	0	0	0
ASDE02	144	0	0	0	0	0	0
ASDE03	286	0	0	0	0	0	0
ASDE04	118	0	0	0	0	0	0
DBLK	352	0	0	0	0	0	0
ASGB01	150	0	0	0	0	0	0
ASDK01	263	339	0	0	0	0	0
ASDK02	338	0	0	0	0	0	0
ASES01	0	0	0	57	0	0	0
ASFR1	0	0	0	269	0	4	0
ASFR2	0	0	0	298	0	1	0
LDWR	1390	0	0	0	0	0	0
JGQH	0	86	0	0	0	0	0
JDWX	0	23	0	0	0	0	0
JNSR	0	40	0	0	0	0	0
ZSAF	0	0	0	40	0	1	0
WTEC	0	34	0	0	0	0	0
TEST							
ASDE09	12	0	0	0	0	0	0
Wrong or strange call sign							
KNORR	0	26	0	0	0	1	0
NORR	0	2	0	0	0	0	0
XXXXX	198	744	0	26	0	0	0
numer.	3	0	0	1	0	0	0

Mariner: French navy military sounding
 Supervis: handled by operator

5. Global system performance

Month	Origin	Nb of messages received	Nb of messages in error	Percentage of messages in error	Nb of messages with operator action	Percentage of messages with operator action
2008-Oct	Offenbach	1214	0	0		
	Exeter	455	41	9,01		
	Telex	0	not relevant	not relevant		
	Email	204	not relevant	not relevant		
	Mariner	0	not relevant	not relevant		
	X25	0	not relevant	not relevant		
	Supervis	3	0	0		
	Total	1669	41	2,46	3	0,18
2008-Nov	Offenbach	1266	0	0		
	Exeter	473	7	1,48		
	Telex	0	not relevant	not relevant		
	Email	276	not relevant	not relevant		
	Mariner	0	not relevant	not relevant		
	X25	0	not relevant	not relevant		
	Supervis	0	0	not relevant		
	Total	1739	7	0,4	0	0
2008-Dec	Offenbach	1522	0	0		
	Exeter	366	0	0		
	Telex	0	not relevant	not relevant		
	Email	211	not relevant	not relevant		
	Mariner	0	not relevant	not relevant		
	X25	0	not relevant	not relevant		
	Supervis	4	0	0		
	Total	1888	0	0	4	0,21
Total	Offenbach	4002	0	0		
	Exeter	1294	48	3,71		
	Telex	0	0	not relevant		
	Email	691	691	100		
	Mariner	0	not relevant	not relevant		
	X25	0	not relevant	not relevant		
	Supervis	7	0	0		
	Total	5994	48	0,91	7	0,13

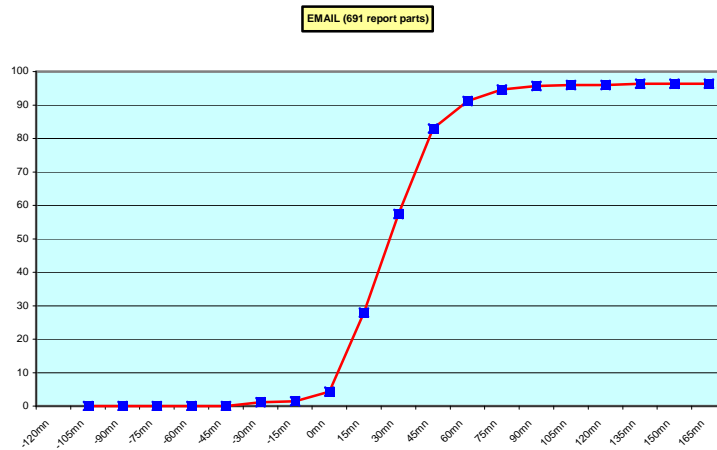
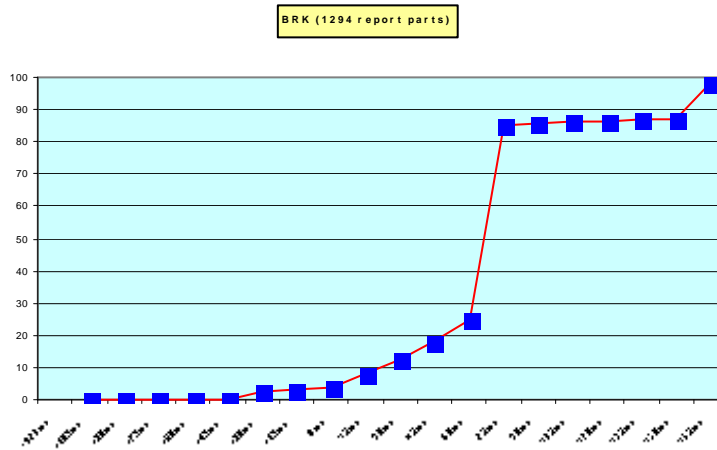
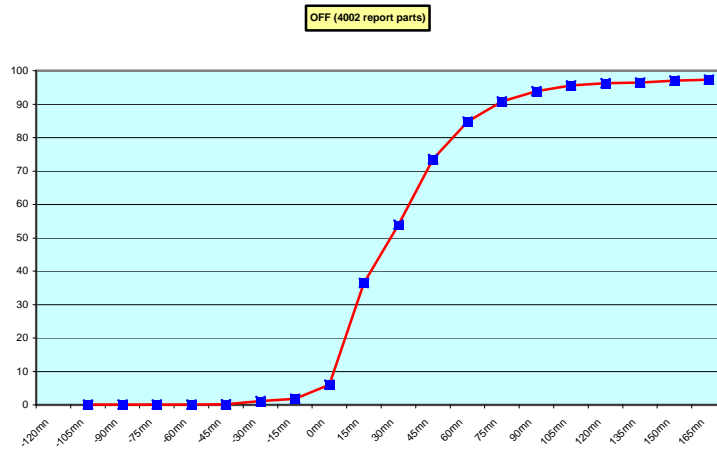
Remark: Email messages were excluded from the number of messages in error and from the relative percentage as values are regarded as not relevant. Not relevant percentages are due to not relevant values or to a total amount of data equal to zero.

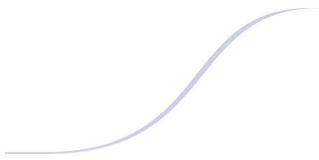
6. Global result of the syntactic check for the messages for each call sign.

Call sign	Nb of messages recieved	Nb of messages in error	Percentage of messages in error	Nb of messages with operator action	Percentage of messages with operator action
ASEU01	126	0	0	0	0
ASEU03	42	0	0	0	0
ASEU04	176	0	0	0	0
ASEU05	170	0	0	0	0
ASDE01	234	0	0	0	0
ASDE02	144	0	0	0	0
ASDE03	286	0	0	0	0
ASDE04	118	0	0	0	0
DBLK	352	0	0	0	0
ASGB01	150	0	0	0	0
ASDK01	602	0	0	0	0
ASDK02	338	0	0	0	0
ASES01	57	0	0	0	0
ASFR1	273	0	0	4	1,47
ASFR2	299	0	0	1	0,33
LDWR	1390	0	0	0	0
JGQH	86	0	0	0	0
JDWX	23	0	0	0	0
JNSR	40	0	0	0	0
ZSAF	41	0	0	1	2,44
WTEC	34	14	41,18	0	0
Test					
ASDE09	12	0	0	0	0
Wrong or strange call sign					
KNORR	27	26	96,3	1	3,7
NORR	2	2	100	0	0
XXXXX	968	6	0,62	0	0
numer.	4	0	0	0	0

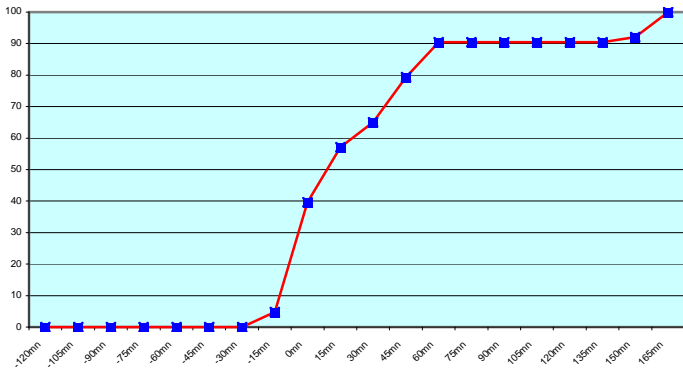
Remark: Data transmitted through email displayed an error rate close to 100% due to email syntax and were thus regarded as not relevant and excluded from errors total amount.

7. Mean time before the integration of the messages in the GTS in Toulouse. HH is the synoptic hour of reference.

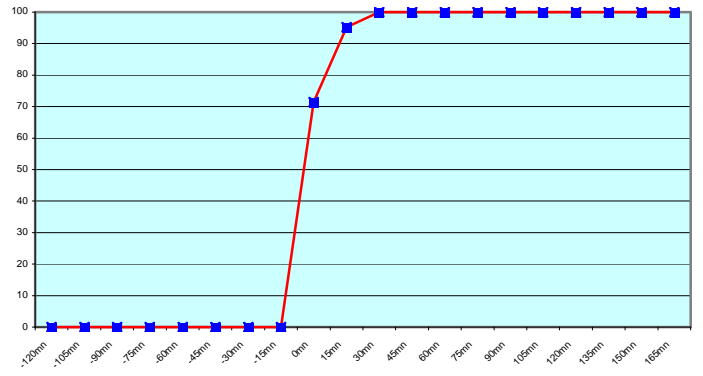




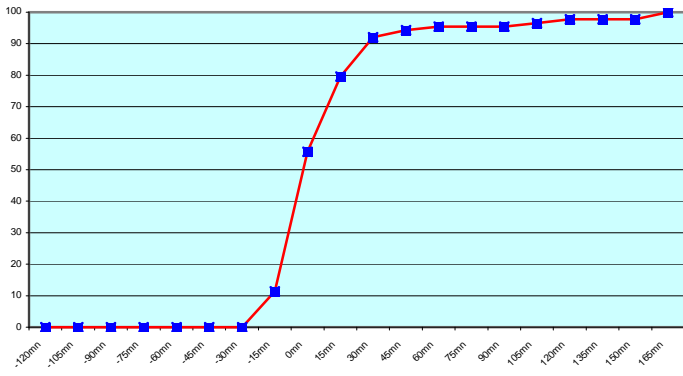
ASEU01 (126 report parts) Offenbach 126



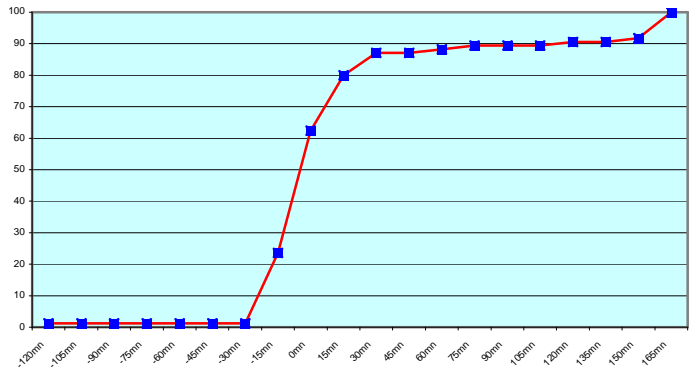
ASEU03 (42 report parts) Offenbach 42



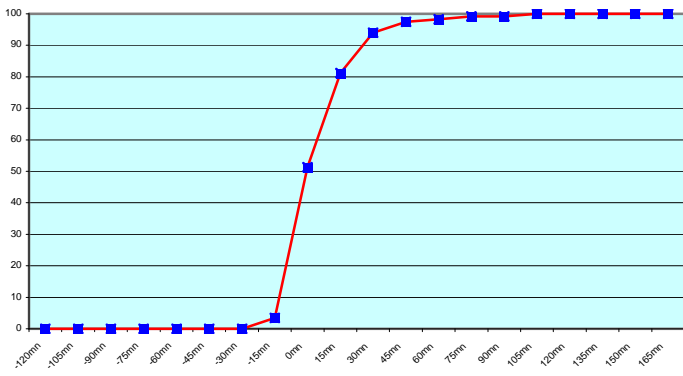
ASEU04 (176 report parts) Offenbach 176



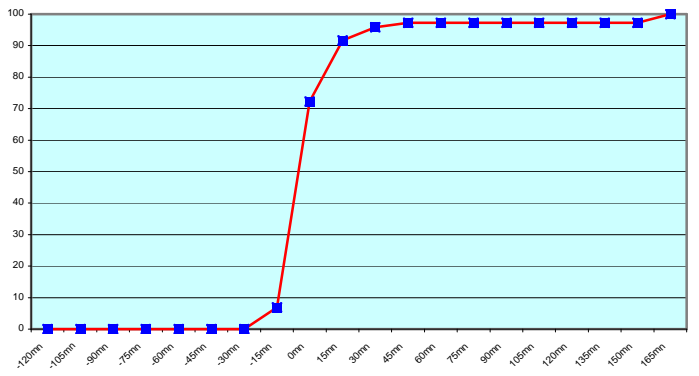
ASEU05 (170 report parts) Offenbach 170

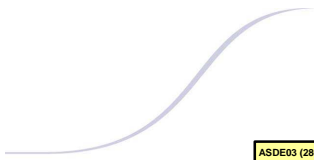


ASDE01 (234 report parts) Offenbach 234

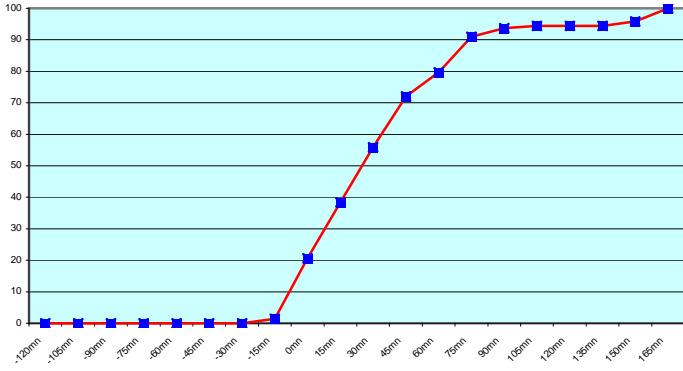


ASDE02 (144 report parts) Offenbach 144

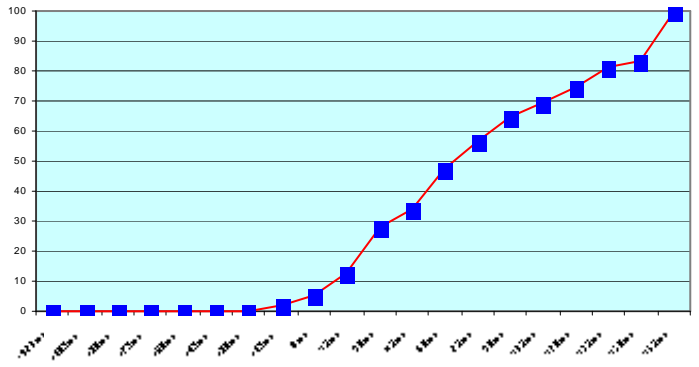




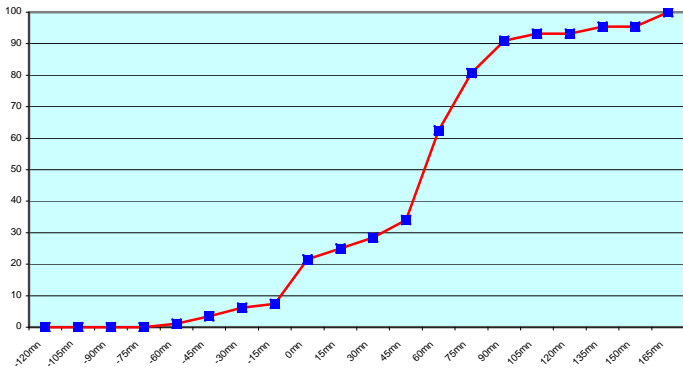
ASDE03 (286 report parts) Offenbach 286



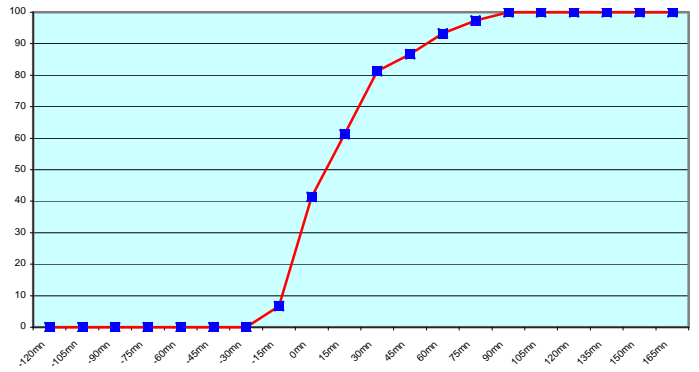
ASDE04 (118 report parts) Offenbach 118



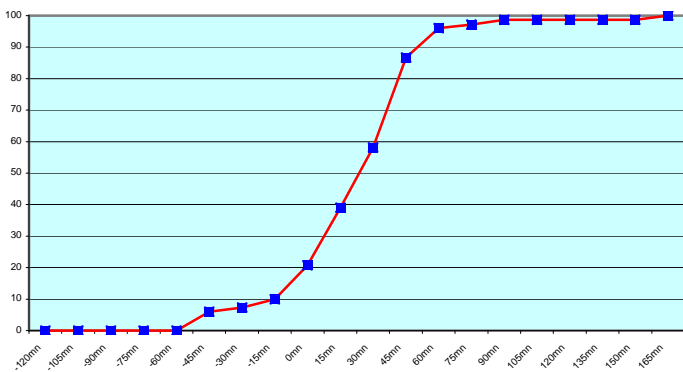
DBLK (352 report parts) Offenbach 352



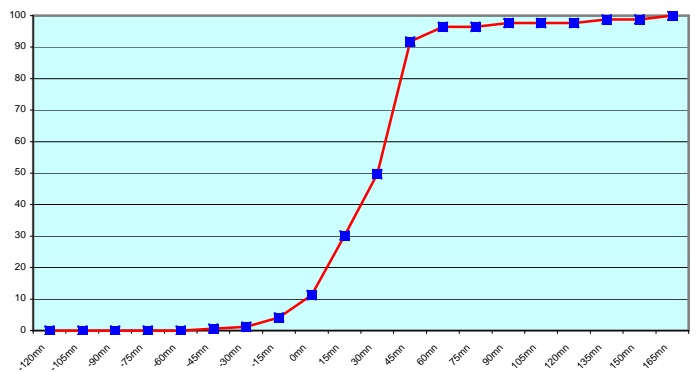
ASGB01 (150 report parts) Offenbach 150

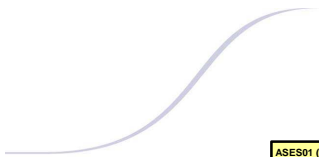


ASDK01 (602 report parts) Offenbach 263 Exeter 339

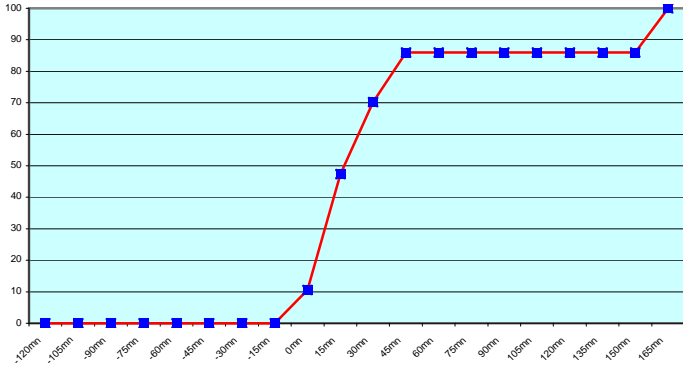


ASDK02 (338 report parts) Offenbach 338

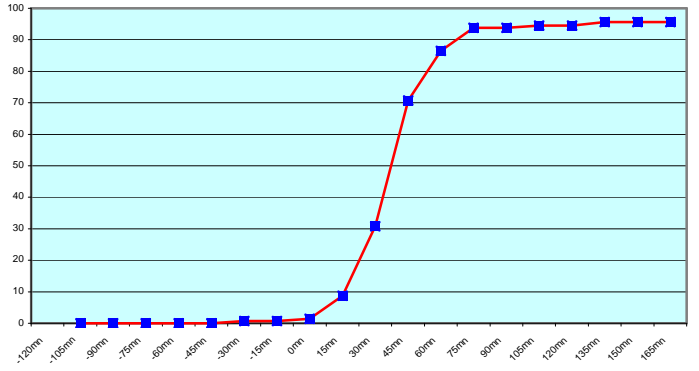




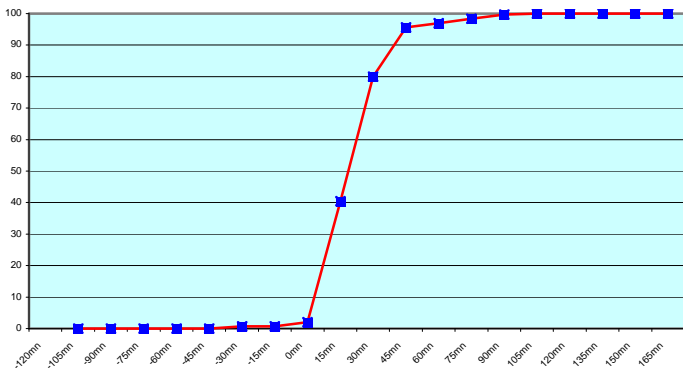
ASES01 (57 report parts) Email 57



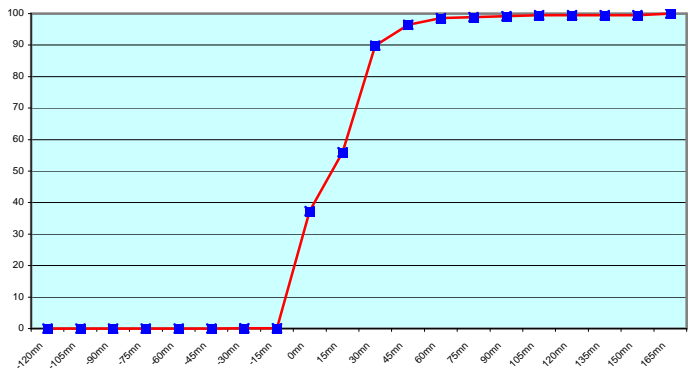
ASFR1 (273 report parts) Email 269 with supervision 4



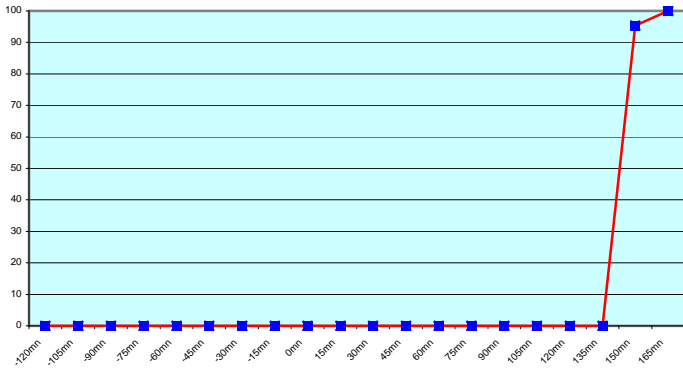
ASFR2 (299 report parts) Email 298 with supervision 1



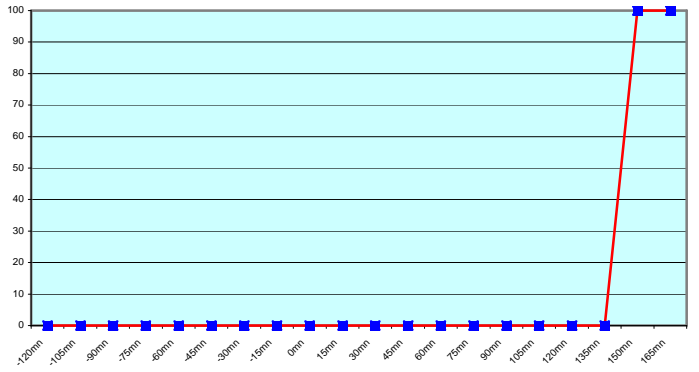
LDWR (1390 report parts) Offenbach 1390



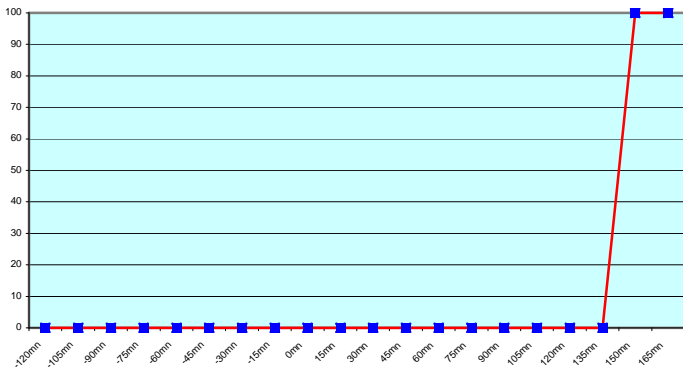
JGQH (86 report parts) Exeter 86



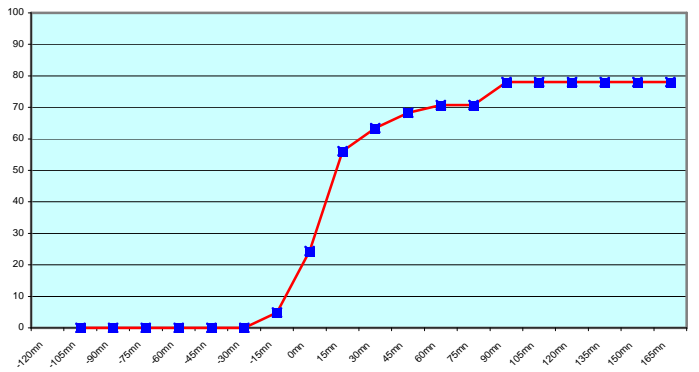
JDWX (23 report parts) Exeter 23

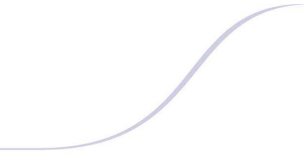


JNSR (40 report parts) Exeter 40



ZSAF (41 report parts) Email 40 with supervision 1





Most of the ships results are good. The ship ASDE04 displays a delay in message reception. The problem was pointed out and was due to troubles in the operating process.

Japanese ships follow a different procedure with an important shift between the sending of the message and the synoptic hour. By consequence, the shape of the curve of messages received from Exeter is different from what expected.

The American research ship WTEC broadcasted 741 message parts during the last three months. Meanwhile most of them couldn't be taken in account in the statistics for the headers displayed the message broadcasting time in spite of the synoptic hour. Further more, most of the soundings were done out of synoptic hours.

For any comment or remark please contact Météo-France Toulouse DSO/DOA department

Gérard Rey (gerard.rey@meteo.fr)

Daniel Bouchara (daniel.bouchara@meteo.fr)

Hugues Jardat (hugues.jardat@meteo.fr)