

Joint WMO/IOC Technical Commission for
Oceanography - Ship Observation Team

End-to-end report of the ASAP data dissemination performance

July to September 2008

1. Introduction

Météo-France is in charge of a end-to-end report of the ASAP data dissemination performance.

The matter of this paper is to evaluate the results of the three last months (July 2008 – September 2008).

2. Information available at Météo-France

TEMP-SHIP messages are received at LFPW (Toulouse) from EGRR (Exeter) and EDZW (Offenbach).

The following information is available :

Reception at LFPW	Broadcast by LFPW
Call sign	Call sign
Header	Channel
Channel	Broadcast date
Reception date	Time lapse
Size	Broadcast size
Format	Recipient
Error	
Operator	

3. List of call signs available

Country	Call sign	Country	Call sign
Denmark	ASDK01	Japan	JCCX
	ASDK02		JGQH
	OXGN2		JIVB
E-ASAP	ASEU01		JDWX
	ASEU02		JNSR
	ASEU03	Norway	LDWR
	ASEU04	South Africa	ZSAF
	ASEU05	Spain	ASES01
France	ASFR1	United Kingdom	ASGB01
	ASFR2	USA	WTEC
Germany	ASDE01	Iceland	ASIS01
	ASDE02	Australia	3FPI7
	ASDE03		
	ASDE04	Test	SHIP
	DBLK		ASDE09

4. Origin of the messages

Call sign	Offenbach	Exeter	Telex	Email	Mariner	Supervis	X25
ASEU01	127	0	0	0	0	0	0
ASEU02	172	0	0	0	0	0	0
ASEU03	143	0	0	0	0	0	0
ASEU04	174	0	0	0	0	0	0
ASEU05	42	0	0	0	0	0	0
ASDE01	298	0	0	0	0	0	0
ASDE02	275	0	0	0	0	0	0
ASDE03	301	0	0	0	0	0	0
ASDE04	242	0	0	0	0	0	0
DBLK	531	0	0	0	0	0	0
ASGB01	161	0	0	0	0	0	0
ASDK01	286	358	0	0	0	0	0
ASDK02	391	0	0	0	0	0	0
ASES01	0	0	0	120	0	0	0
ASFR1	0	0	0	287	0	8	0
ASFR2	0	0	0	259	0	0	0
LDWR	1362	0	0	0	0	0	0
JCCX	0	234	0	0	0	0	0
JIVB	0	75	0	0	0	0	0
JDWX	0	4	0	0	0	0	0
JNSR	0	506	0	0	0	0	0
ZSAF	0	0	0	45	0	0	0
Test							
ASDE09	29	0	0	0	0	0	0
SHIP	0	2	0	0	0	0	0
Wrong or strange call signs							
ASEU09	4	0	0	0	0	0	0
BRK	0	4	0	0	0	0	0
OFF	6	0	0	0	0	0	0
UUAAASES01	0	0	0	0	0	0	1
XXXXX	143	738	0	33	0	0	0
numer.	53	0	0	13	0	1	0

Mariner: French navy military sounding

Supervis: handled by operator

5. Global system performance

Month	Origin	Nb of messages received	Nb of messages in error	Percentage of messages in error	Nb of messages with operator action	Percentage of messages with operator action
2008-Jul	Offenbach	1617	2	0,12		
	Exeter	587	0	0		
	Telex	0	not relevant	not relevant		
	Email	256	not relevant	not relevant		
	Mariner	0	not relevant	not relevant		
	X25	1	not relevant	not relevant		
	Supervis	1	0	0		
	Total	2204	2	0,09	1	0,05
2008-Aug	Offenbach	1668	0	0		
	Exeter	553	0	0		
	Telex	0	not relevant	not relevant		
	Email	273	not relevant	not relevant		
	Mariner	0	not relevant	not relevant		
	X25	0	not relevant	not relevant		
	Supervis	8	3	37,5		
	Total	2221	0	0	8	0,36
2008-Sep	Offenbach	1455	0	0		
	Exeter	781	0	0		
	Telex	0	not relevant	not relevant		
	Email	228	not relevant	not relevant		
	Mariner	0	not relevant	not relevant		
	X25	0	not relevant	not relevant		
	Supervis	0	0	not relevant		
	Total	2236	0	0	0	0
Total	Offenbach	4740	2	0,04		
	Exeter	1921	0	0		
	Telex	0	0	not relevant		
	Email	757	757	100		
	Mariner	0	not relevant	not relevant		
	X25	1	not relevant	not relevant		
	Supervis	9	3	33,33		
	Total	7428	2	0,03	9	0,13

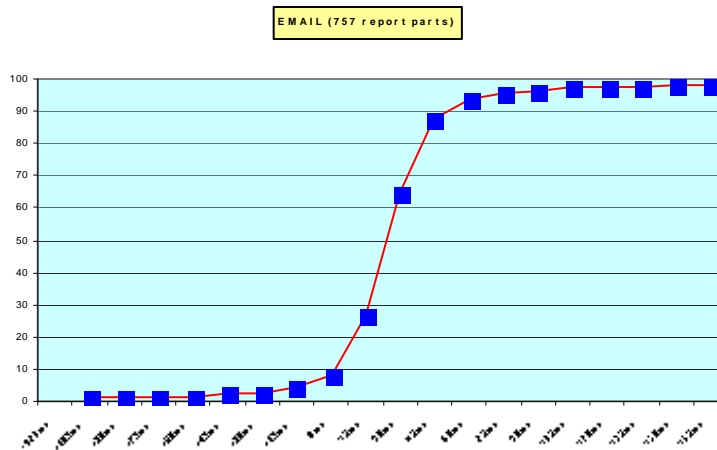
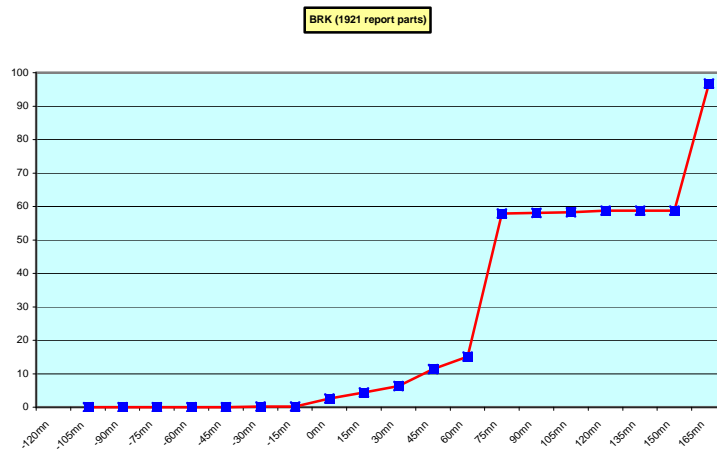
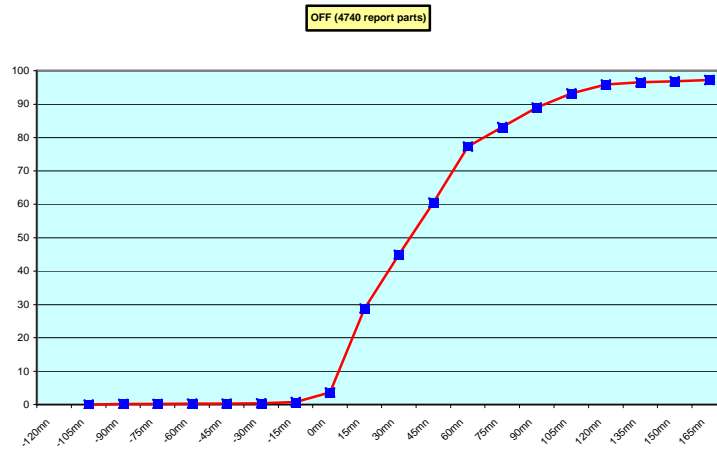
Remark: Email messages were excluded from the number of messages in error and from the relative percentage as values are regarded as not relevant. Not relevant percentages are due to not relevant values or to a total amount of data equal to zero.

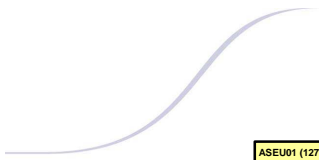
6. Global result of the syntactic check for the messages for each call sign.

Call sign	Nb of messages received	Nb of messages in error	Percentage of messages in error	Nb of messages with operator action	Percentage of messages with operator action
ASEU01	127	0	0	0	0
ASEU02	172	0	0	0	0
ASEU03	143	0	0	0	0
ASEU04	174	0	0	0	0
ASEU05	42	0	0	0	0
ASDE01	298	0	0	0	0
ASDE02	275	0	0	0	0
ASDE03	301	0	0	0	0
ASDE04	242	0	0	0	0
DBLK	531	0	0	0	0
ASGB01	161	0	0	0	0
ASDK01	644	0	0	0	0
ASDK02	391	0	0	0	0
ASES01	120	0	0	0	0
ASFR1	295	3	1,02	8	2,71
ASFR2	259	0	0	0	0
LDWR	1362	0	0	0	0
JCCX	234	0	0	0	0
JIVB	75	0	0	0	0
JDWX	4	0	0	0	0
JNSR	506	0	0	0	0
ZSAF	45	0	0	0	0
Test					
ASDE09	29	0	0	0	0
SHIP	2	0	0	0	0
Wrong or strange call signs					
ASEU09	4	0	0	0	0
BRK	4	0	0	0	0
OFF	6	0	0	0	0
UUAAASES01	1	0	0	0	0
XXXXX	914	2	0,22	0	0
numer.	67	0	0	1	1,49

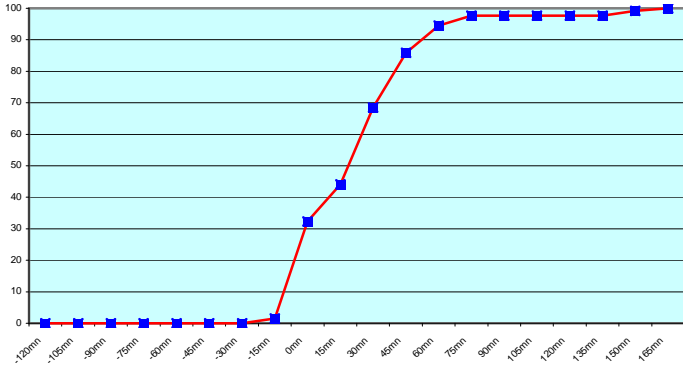
Remark: Data transmitted through email displayed an error rate close to 100% due to email syntax and were thus regarded as not relevant and excluded from errors total amount.

7. Mean time before the integration of the messages in the GTS in Toulouse. HH is the synoptic hour of reference.

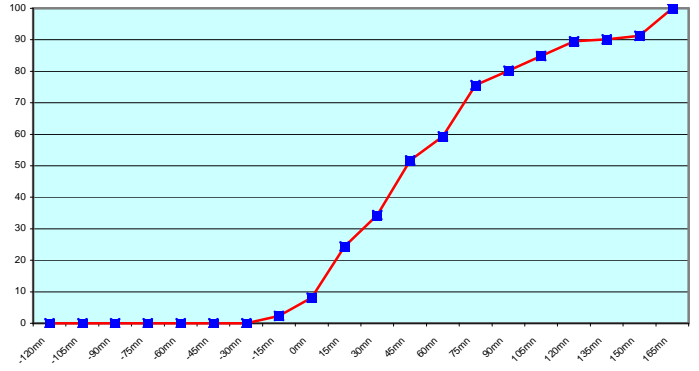




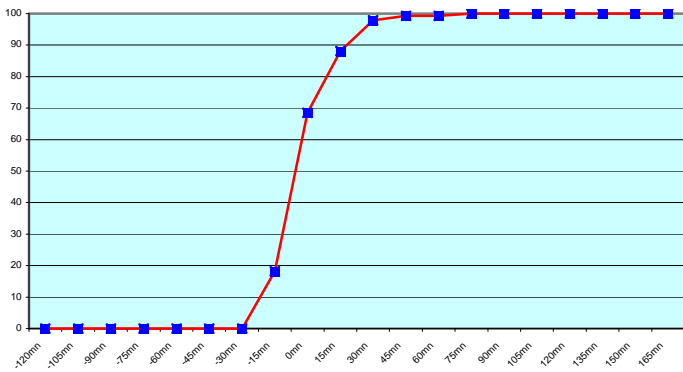
ASEU01 (127 report parts) Offenbach 127



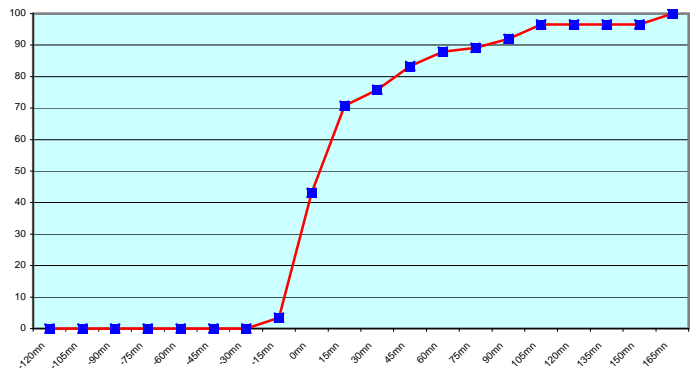
ASEU02 (172 report parts) Offenbach 172



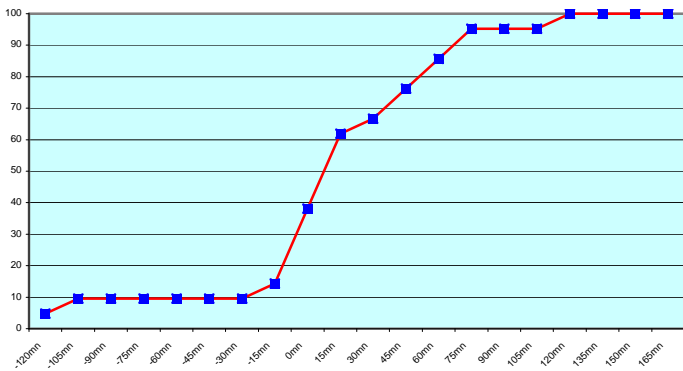
ASEU03 (143 report parts) Offenbach 143



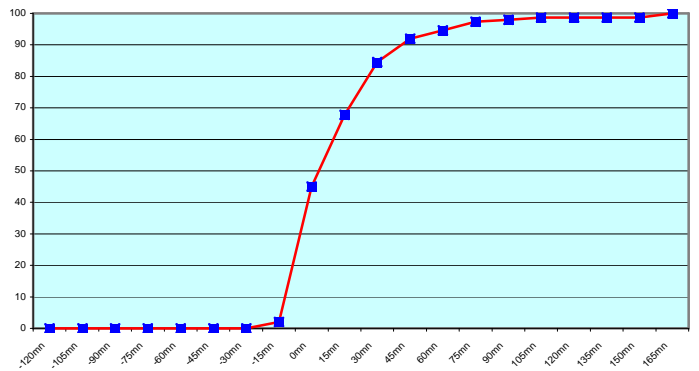
ASEU04 (174 report parts) Offenbach 174



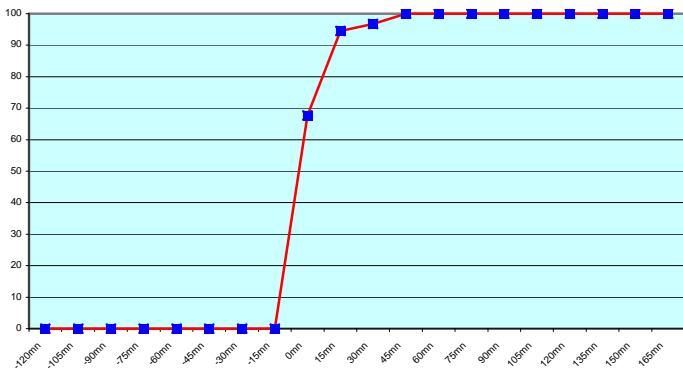
ASEU05 (42 report parts) Offenbach 42



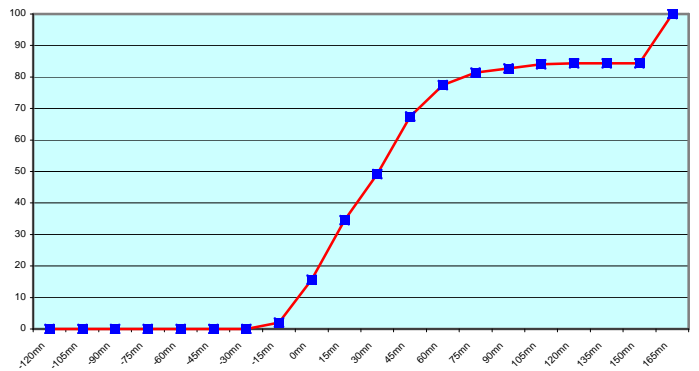
ASDE01 (298 report parts) Offenbach 298

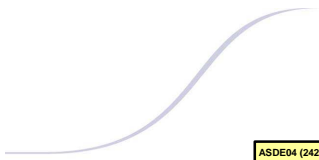


ASDE02 (275 report parts) Offenbach 275

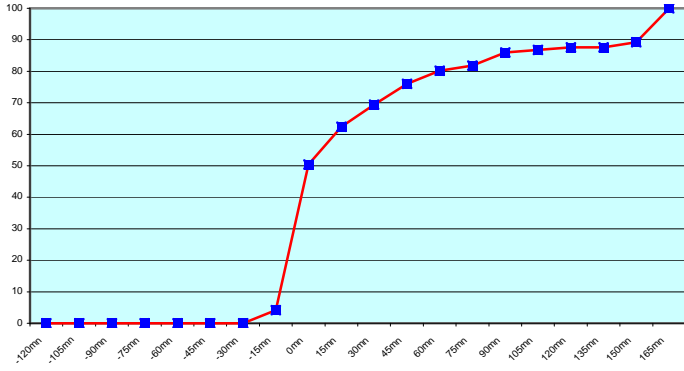


ASDE03 (301 report parts) Offenbach 301

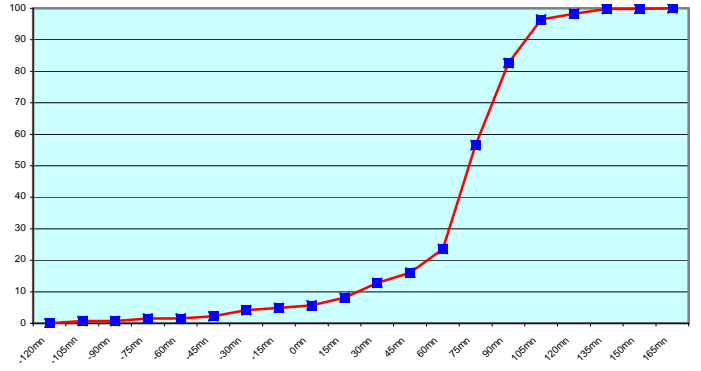




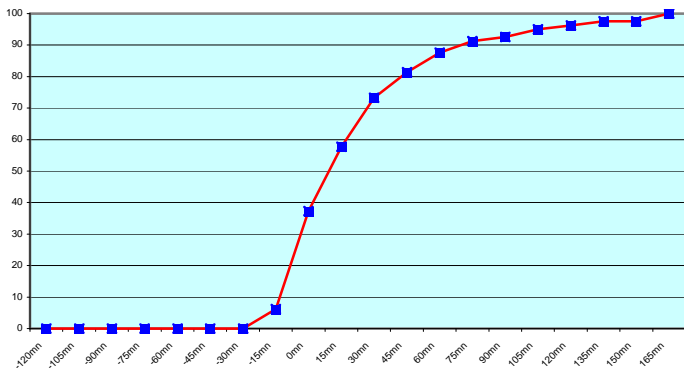
ASDE04 (242 report parts) Offenbach 242



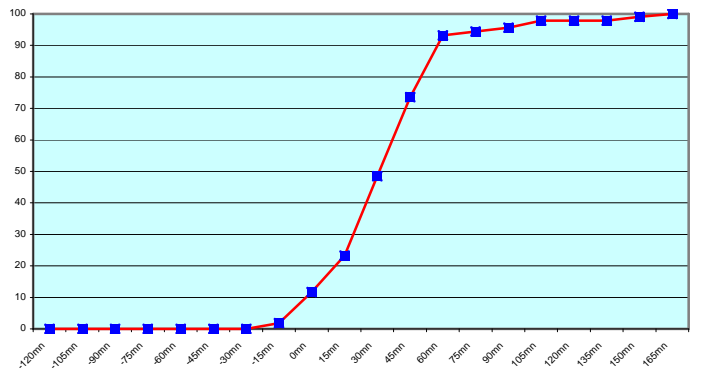
DBLK (531 report parts) Offenbach 531



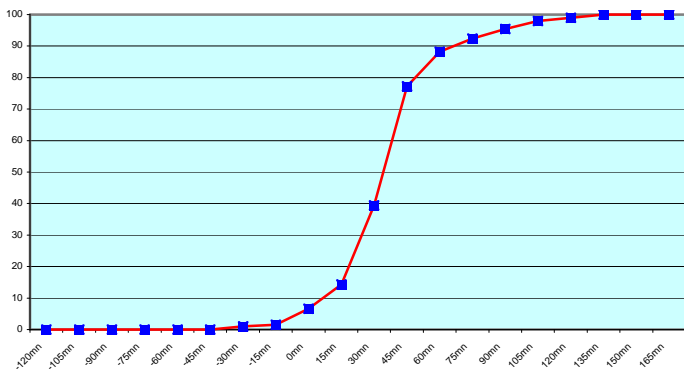
ASGB01 (161 report parts) Offenbach 161



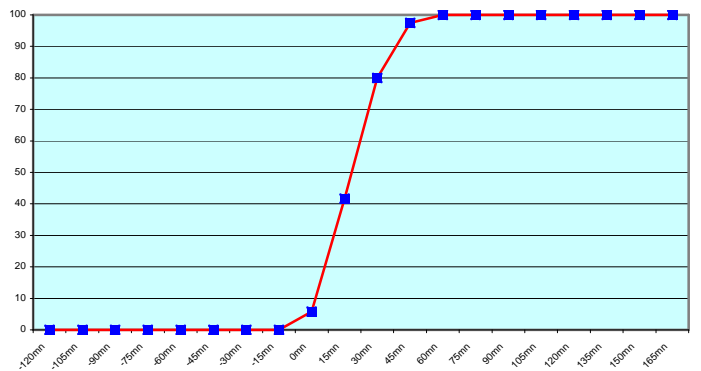
ASDK01 (644 report parts) Offenbach 286 Exeter 358



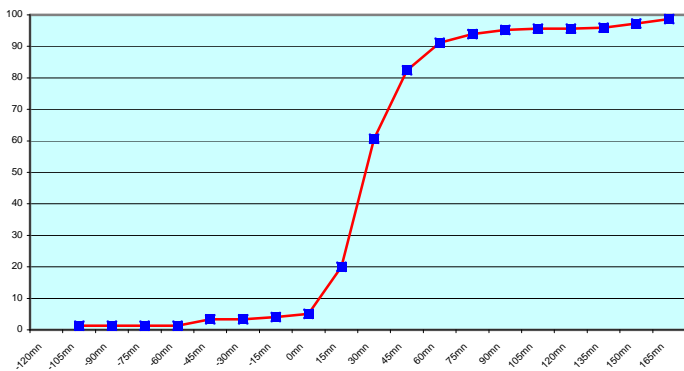
ASDK02 (391 report parts) Offenbach 391



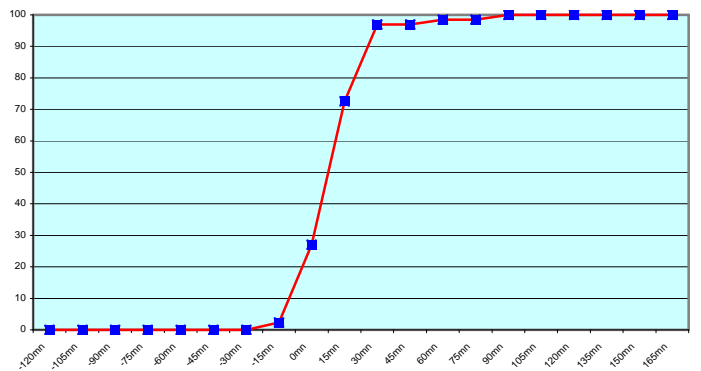
ASES01 (120 report parts) Email 120

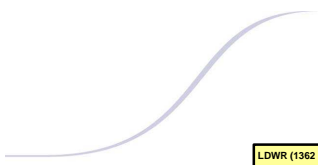


ASFR1 (295 report parts) Email 287 with supervision 8

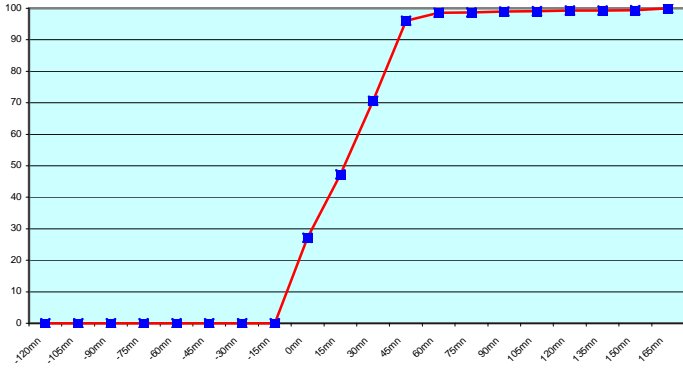


ASFR2 (259 report parts) Email 259

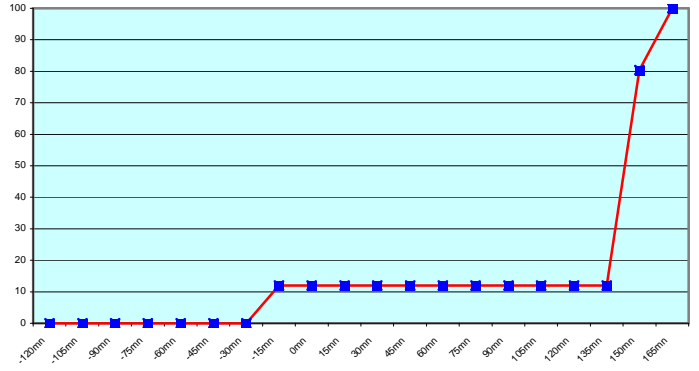




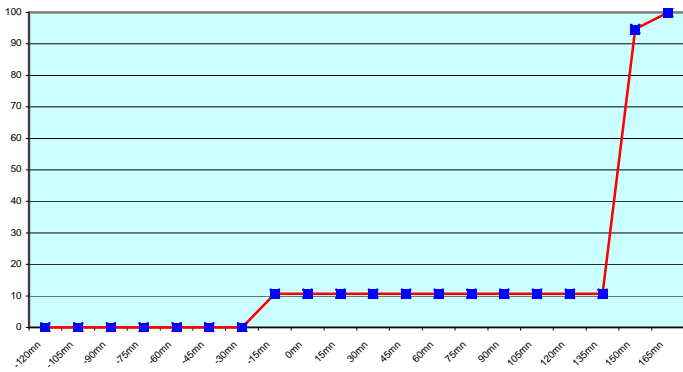
LDWR (1362 report parts) Offenbach 1362



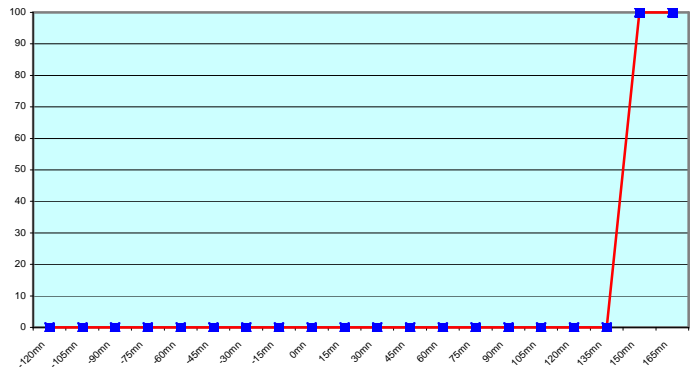
JCCX (234 report parts) Exeter 234



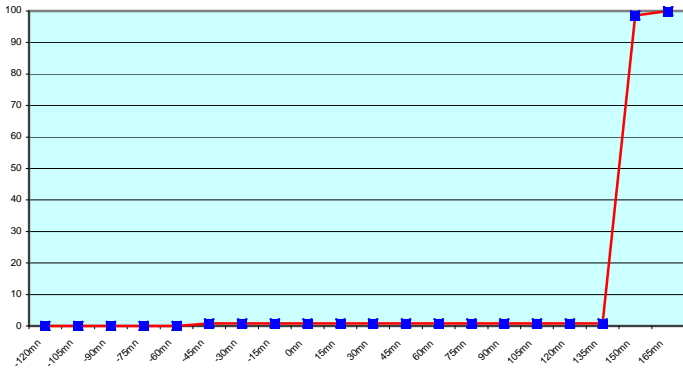
JIVB (75 report parts) Exeter 75



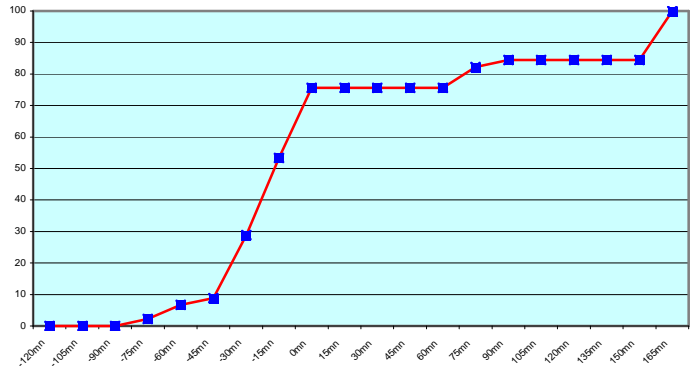
JDWX (4 report parts) Exeter 4



JNSR (506 report parts) Exeter 506



ZSAF (45 report parts) Email 45



Results are good. ASDE03 results are improving in regard of last month.

Japanese ships follow a different procedure with an important shift between the sending of the message and the synoptic hour. By consequence, the shape of the curve of messages received from Exeter is different from what expected.

For any comment or remark please contact Météo-France Toulouse DSO/DOA department

Gérard Rey (gerard.rey@meteo.fr)

Daniel Bouchara (daniel.bouchara@meteo.fr)

Hugues Jardat (hugues.jardat@meteo.fr)

