

Joint WMO/IOC Technical Commission for  
Oceanography - Ship Observation Team

# **End-to-end report of the ASAP data dissemination performance**

## **January to March 2008**

## 1. Introduction

Météo-France is in charge of a end-to-end report of the ASAP data dissemination performance.

The matter of this paper is to evaluate the results of the three last months (January 2008 – March 2008).

## 2. Information available at Météo-France

TEMP-SHIP messages are received at LFPW (Toulouse) from EGRR (Exeter) and EDZW (Offenbach).

The following information is available :

Reception at LFPW	Broadcast by LFPW
Call sign	Call sign
Header	Channel
Channel	Broadcast date
Reception date	Time lapse
Size	Broadcast size
Format	Recipient
Error	
Operator	

### 3. List of call signs available

<b>Country</b>	<b>Call sign</b>	<b>Country</b>	<b>Call sign</b>
Denmark	ASDK01	Japan	JCCX
	ASDK02		JGQH
	OXGN2		JIVB
E-ASAP	ASEU01		JDWX
	ASEU02		JNSR
	ASEU03	Norway	LDWR
	ASEU04	South Africa	ZSAF
	ASEU05	Spain	ASES01
France	ASFR1	United Kingdom	ASGB01
	ASFR2	USA	WTEC
Germany	ASDE01	Iceland	ASIS01
	ASDE02	Australia	3FPI7
	ASDE03	???	SHIP
	ASDE04		
	DBLK		

#### 4. Origin of the messages

Call Sign	Offenbach	Exeter	Telex	Email	Mariner	Supervis	X25
ASEU01	292	0	0	0	0	0	0
ASEU02	214	0	0	0	0	0	0
ASEU03	98	0	0	0	0	0	0
ASEU04	180	0	0	0	0	0	0
ASEU05	289	0	0	0	0	0	0
ASDE01	280	0	0	0	0	0	0
ASDE02	312	0	0	0	0	0	0
ASDE03	236	0	0	0	0	0	0
ASDE04	328	0	0	0	0	0	0
DBLK	362	0	0	0	0	0	0
ASGB01	256	0	0	0	0	0	0
ASDK01	221	300	0	0	0	0	0
ASDK02	240	0	0	0	0	0	0
ASES01	0	0	0	112	0	0	0
ASFR1	0	0	0	127	0	1	0
ASFR2	0	0	0	240	0	0	0
LDWR	1358	0	0	0	0	0	0
JCCX	0	60	0	0	0	0	0
JGQH	0	157	0	0	0	0	0
JIVB	0	25	0	0	0	0	0
JDWX	0	8	0	0	0	0	0
JNSR	0	205	0	0	0	0	0
ZSAF	0	0	0	124	0	1	0
Test							
ASDE09	49	0	0	0	0	0	0
Wrong or strange call signs							
ARGU	0	3	0	0	0	0	0
ASDEU03	8	0	0	0	0	0	0
SHIP	0	9	0	0	0	0	0
XXXXX	243	729	0	43	0	0	0

Mariner: French navy military sounding  
 Supervis: handled by operator

## 5. Global system performance

Call Sign	Nb of messages received	Nb of messages in error	Percentage of messages in error	Nb of messages with operator action	Percentage of messages with operator action
ASEU01	292	0	0	0	0
ASEU02	214	0	0	0	0
ASEU03	98	0	0	0	0
ASEU04	180	0	0	0	0
ASEU05	289	0	0	0	0
ASDE01	280	0	0	0	0
ASDE02	312	4	1,28	0	0
ASDE03	236	0	0	0	0
ASDE04	328	0	0	0	0
DBLK	362	0	0	0	0
ASGB01	256	0	0	0	0
ASDK01	521	0	0	0	0
ASDK02	240	0	0	0	0
ASES01	112	0	0	0	0
ASFR1	128	0	0	1	0,78
ASFR2	240	0	0	0	0
LDWR	1358	0	0	0	0
JCCX	60	0	0	0	0
JGQH	157	0	0	0	0
JIVB	25	0	0	0	0
JDWX	8	0	0	0	0
JNSR	205	0	0	0	0
ZSAF	125	0	0	1	0,8
Test					
ASDE09	49	0	0	0	0
Wrong or strange call signs					
ARGU	3	0	0	0	0
ASDEU03	8	0	0	0	0
SHIP	9	0	0	0	0
XXXXX	1015	0	0	0	0

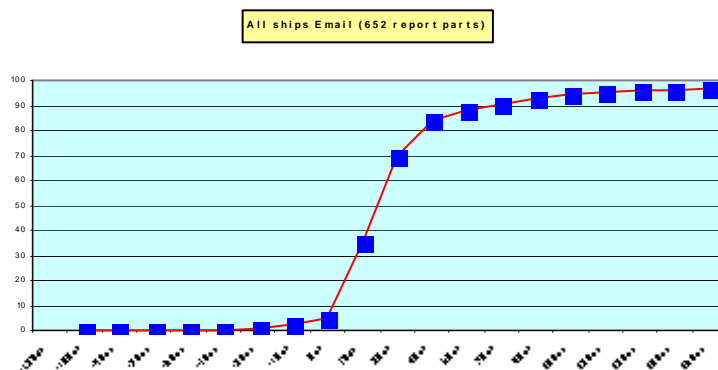
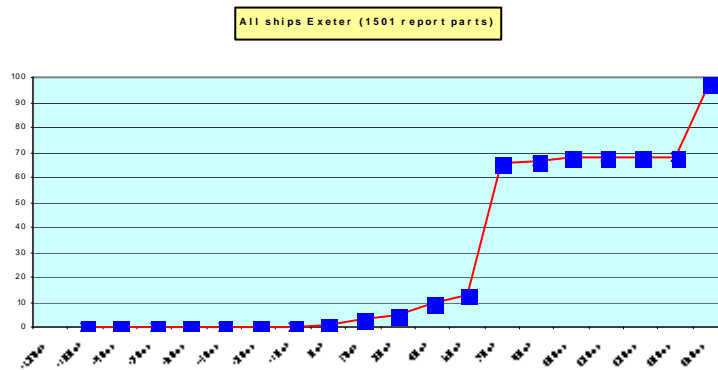
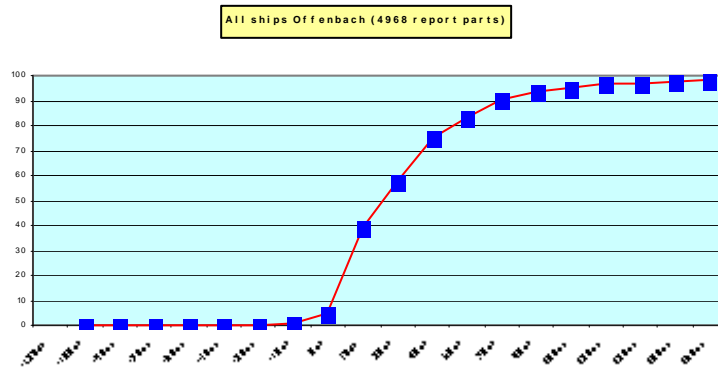
**Remark:** Email messages were excluded from the number of messages in error and from the relative percentage as values are regarded as not relevant. Not relevant percentages are due to not relevant values or to a total amount of data equal to zero.

## 6. Global result of the syntactic check for the messages for each call sign.

Call Sign	Nb of messages received	Nb of messages in error	Percentage of messages in error	Nb of messages with operator action	Percentage of messages with operator action
ASEU01	292	0	0	0	0
ASEU02	214	0	0	0	0
ASEU03	98	0	0	0	0
ASEU04	180	0	0	0	0
ASEU05	289	0	0	0	0
ASDE01	280	0	0	0	0
ASDE02	312	4	1,28	0	0
ASDE03	236	0	0	0	0
ASDE04	328	0	0	0	0
DBLK	362	0	0	0	0
ASGB01	256	0	0	0	0
ASDK01	521	0	0	0	0
ASDK02	240	0	0	0	0
ASES01	112	0	0	0	0
ASFR1	128	0	0	1	0,78
ASFR2	240	0	0	0	0
LDWR	1358	0	0	0	0
JCCX	60	0	0	0	0
JGQH	157	0	0	0	0
JIVB	25	0	0	0	0
JDWX	8	0	0	0	0
JNSR	205	0	0	0	0
ZSAF	125	0	0	1	0,8
Test					
ASDE09	49	0	0	0	0
Wrong or strange call signs					
ARGU	3	0	0	0	0
ASDEU03	8	0	0	0	0
SHIP	9	0	0	0	0
XXXXX	1015	0	0	0	0

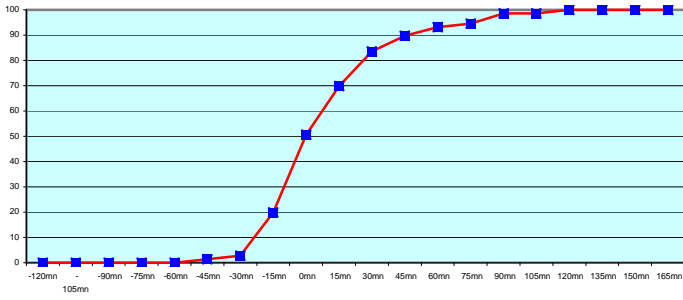
**Remark:** Data transmitted through email displayed an error rate close to 100% due to email syntax and were thus regarded as not relevant and excluded from errors total amount.

7. Mean time before the integration of the messages in the GTS in Toulouse. HH is the synoptic hour of reference.

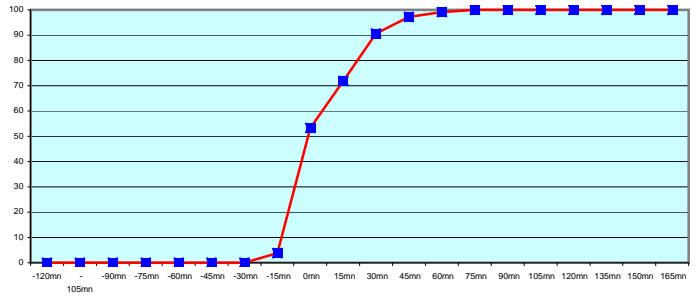




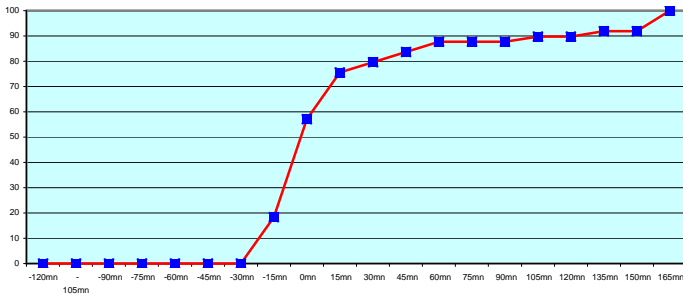
ASEU01 (292 report parts) Offenbach 292



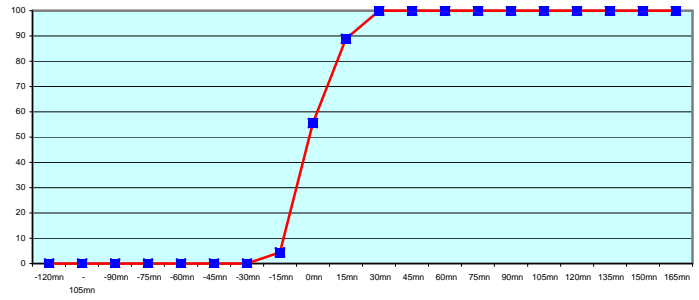
ASEU02 (214 report parts) Offenbach 214



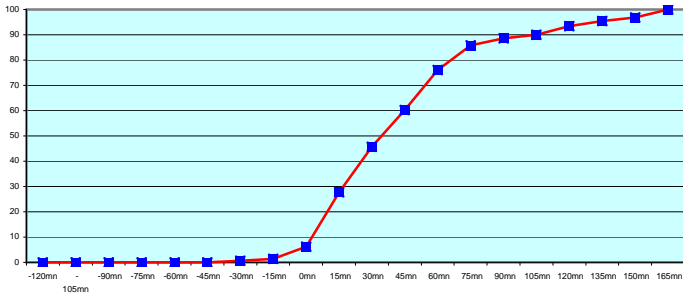
ASEU03 (98 report parts) Offenbach 98



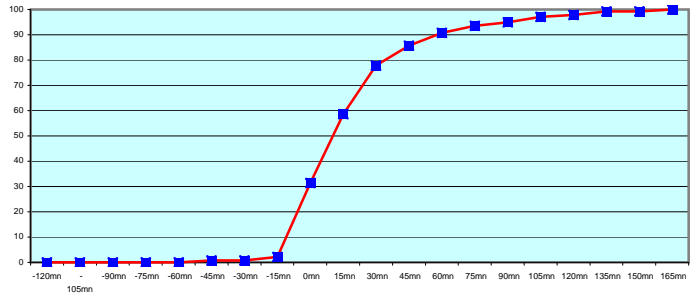
ASEU04 (180 report parts) Offenbach 180



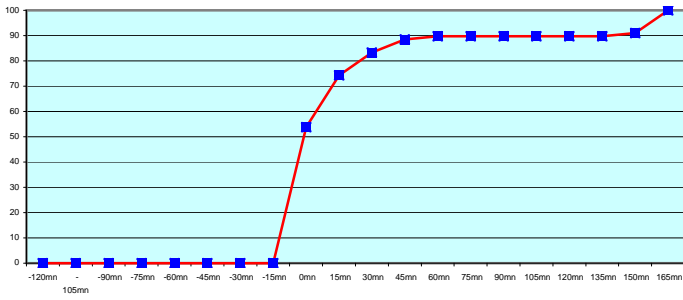
ASEU05 (289 report parts) Offenbach 289



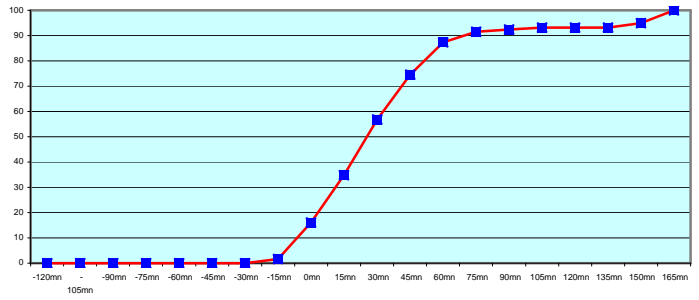
ASEU01 (280 report parts) Offenbach 280



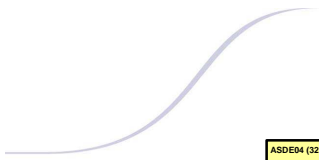
ASDE02 (312 report parts) Offenbach 312



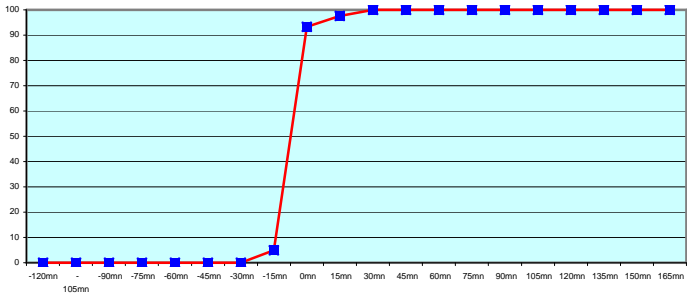
ASDE03 (236 report parts) Offenbach 236



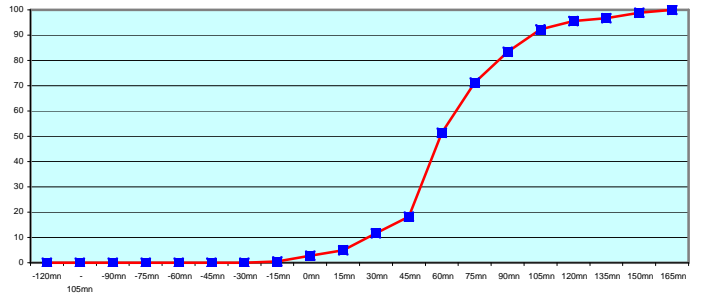




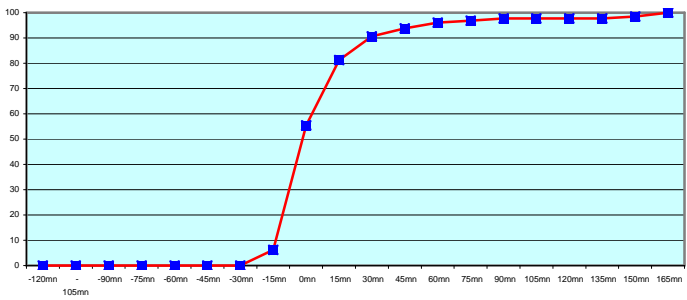
ASDE04 (328 report parts) Offenbach 328



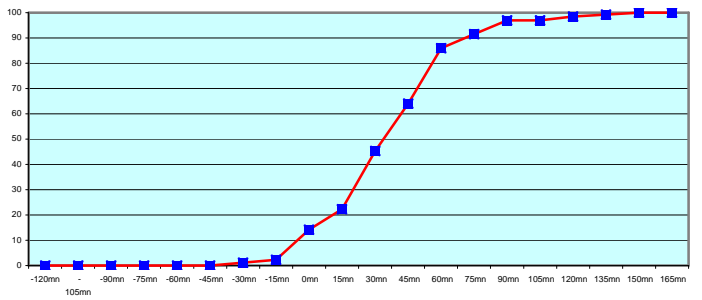
DBLK (362 report parts) Offenbach 362



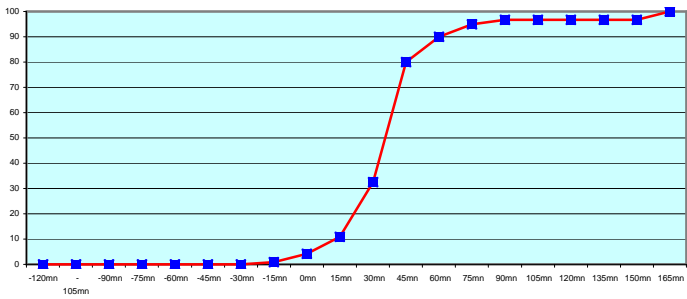
ASGB01 (256 report parts) Offenbach 256



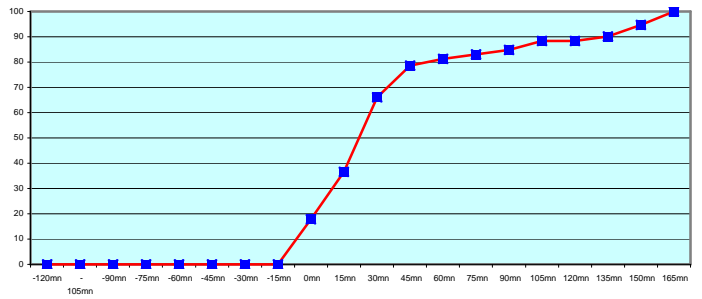
ASDK01 (521 report parts) Offenbach 221 Exeter 300



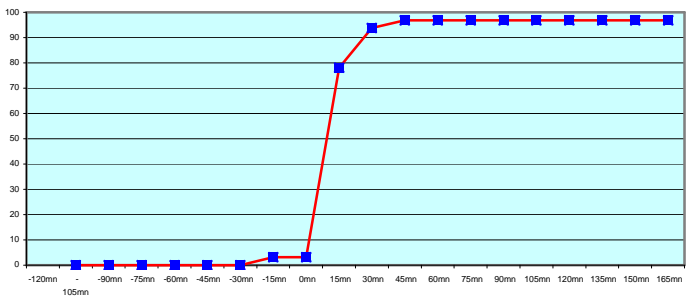
ASDK02 (240 report parts) Offenbach 240



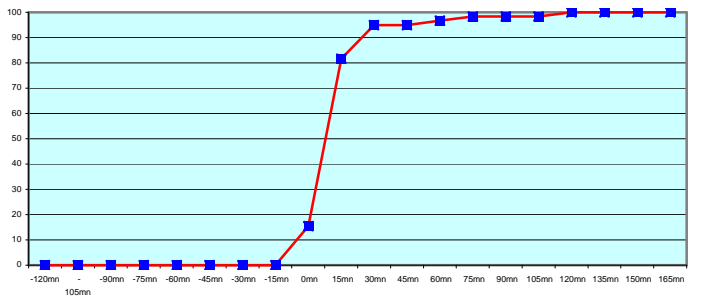
ASES01 (112 report parts) Email 112

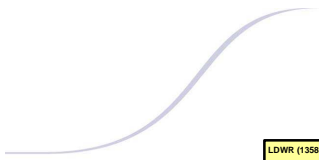


ASFR1 (128 report parts) Email 127 with supervision 1

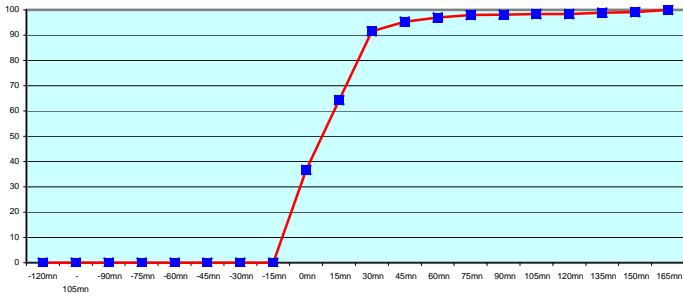


ASFR2 (240 report parts) Email 240

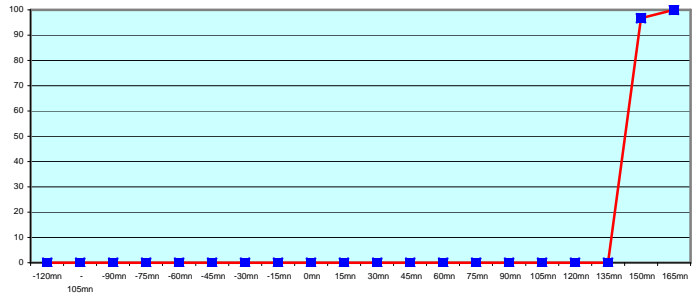




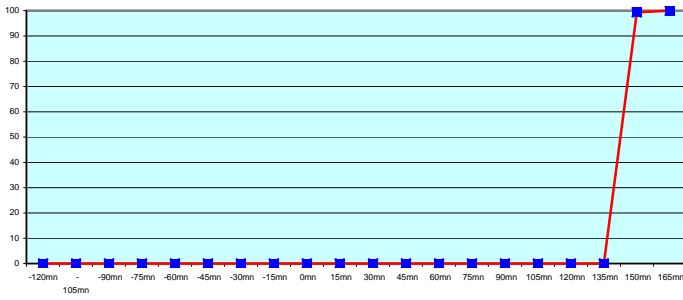
LDWR (1358 report parts) Offenbach 1358



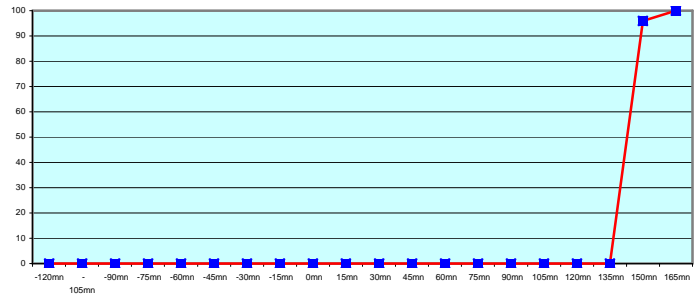
JCCX (60 report parts) Exeter 60



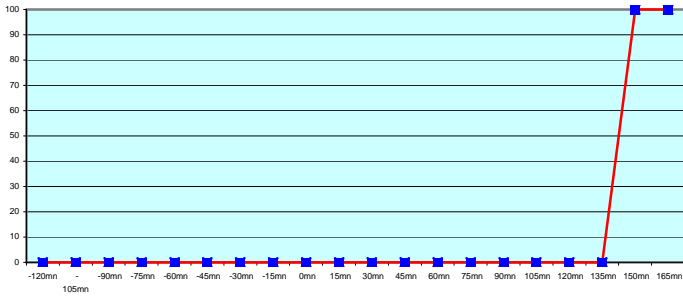
JQGH (157 report parts) Exeter 157



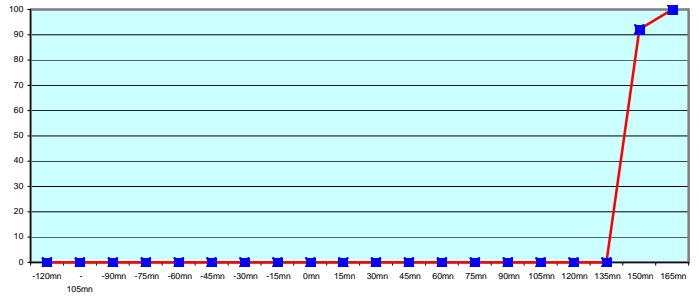
JIVB (25 report parts) Exeter 25



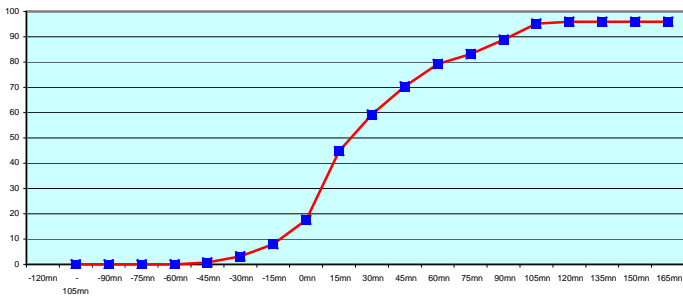
JDWX (8 report parts) Exeter 8

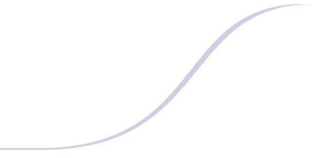


JNSR (205 report parts) Exeter 205



ZSAF (125 report parts) Email 124 with supervision 1





Most of the ships results are good. A few ship (ASEU05 , DBLK display a large delay in message reception. Japanese ships seems to follow a different procedure with an important shift between the sending of the message and the synoptic hour.

For any comment or remark please contact Météo-France Toulouse DSO/DOA department  
Gérard Rey ([gerard.rey@meteo.fr](mailto:gerard.rey@meteo.fr))  
Daniel Bouchara ([daniel.bouchara@meteo.fr](mailto:daniel.bouchara@meteo.fr))  
Hugues Jardat ([hugues.jardat@meteo.fr](mailto:hugues.jardat@meteo.fr))