

END-TO-END REPORT OF THE ASAP DATA DISSEMINATION PERFORMANCE – 2008

(report submitted by Gérard Rey, ASAP Monitoring Centre – Operated by Météo France)

1. Introduction

Météo-France is in charge of an end-to-end report of the ASAP data dissemination performance.

A quarterly report and an annual report have been provided in 2007 and 2008.

The quarterly frequency is more appropriate to give to the ASAP operators an opportunity to correct quickly, difficulties in the data dissemination.

TEMP-SHIP messages are mainly received at LFPW (Toulouse) from EGRR (Exeter) and EDZW (Offenbach). Some messages are now received from three ships directly by e-mail.

The following information is available:

Reception at LFPW	Broadcast by LFPW
Call sign	Call sign
Header	Channel
Channel	Broadcast date
Reception date	Time lapse
Size	Broadcast size
Format	Recipient
Error	
Operator	

2. List of call signs available in 2007 and 2008

Country	Call sign	Country	Call sign
Denmark	ASDK01	Japan	JCCX
	ASDK02		JGQH
	OXGN2		JIVB
E-ASAP	ASEU01		JDWX
	ASEU02		JNSR
	ASEU03	Norway	LDWR
	ASEU04	South Africa	ZSAF
	ASEU05	Spain	ASES01
France	ASFR1	United Kingdom	ASGB01
	ASFR2	USA	WTEC
Germany	ASDE01	Iceland	ASIS01
	ASDE02	Australia	3FPI7
	ASDE03		
	ASDE04	Test	SHIP
	DBLK	Test	ASDE09

3. Global system performance

In 2007:

Month	Origin	Nb of messages received	Nb of messages in error	Percentage of messages in error	Nb of messages with operator action	Percentage of messages with operator action
	Offenbach	16818	36	0,21		
	Exeter	6552	19	0,29		
	Telex	256	243	not relevant		
	Email	4465	4465	100		
	Mariner	40	not relevant	not relevant		
	X25	3	not relevant	not relevant		
	Supervis	39	12	30,77		
	Total	28173	55	0,24	39	0,17

In 2008:

Month	Origin	Nb of messages received	Nb of messages in error	Percentage of messages in error	Nb of messages with operator action	Percentage of messages with operator action
	Offenbach	18686	10	0,05		
	Exeter	6724	49	0,73		
	Telex	0	0	not relevant		
	Email	2793	2793	100		
	Mariner	0	not relevant	not relevant		
	X25	1	not relevant	not relevant		
	Supervis	28	12	42,86		
	Total	28232	59	0,23	28	0,11

Remark: Email messages were excluded from the number of messages in error and from the relative percentage as values are regarded as not relevant. Percentage of messages in error is indicated as "not relevant" when corresponding values are not relevant, or the total amount of data is equal to zero.

4. Global result of the syntactic check for the messages for each call sign.

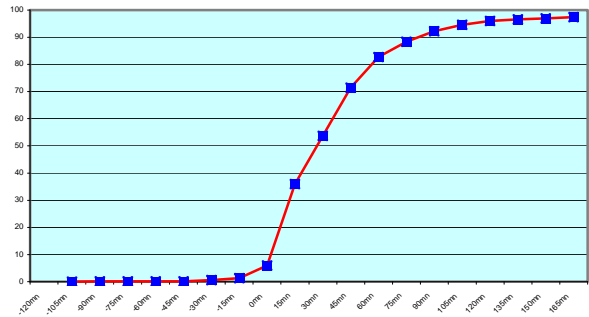
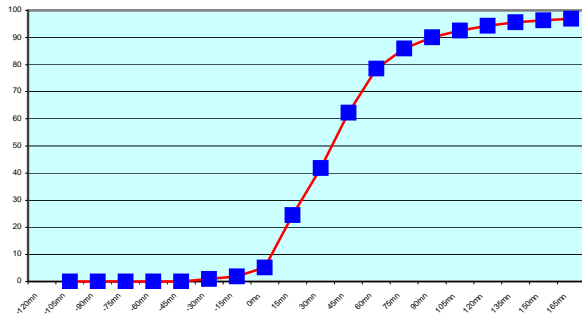
Call Sign	Nb of messages received		Nb of messages in error		Percentage of messages in error		Nb of messages with operator action		Percentage of messages with operator action	
	2007	2008	2007	2008	2007	2008	2007	2008	2007	2008
ASEU01	1108	797	2	0	0,18	0	0	0	0	0
ASEU02	804	518	2	0	0,25	0	0	0	0	0
ASEU03	778	429	0	0	0	0	7	0	0,9	0
ASEU04	718	778	8	0	1,11	0	4	0	0,56	0
ASEU05	1192	927	0	0	0	0	0	0	0	0
ASDE01	1149	1055	8	0	0,7	0	3	0	0,26	0
ASDE02	841	929	8	4	0,95	0,43	0	0	0	0
ASDE03	1172	1032	0	0	0	0	0	0	0	0
ASDE04	1353	1044	0	0	0	0	0	0	0	0
ASGB01	811	809	0	0	0	0	0	0	0	0
ASDK01	2009	2381	0	0	0	0	0	0	0	0
ASDK02	935	1119	0	0	0	0	0	0	0	0
ASFR1	1073	940	3	10	0,28	1,06	5	21	0,47	2,23
ASFR2	914	1083	4	0	0,44	0	6	1	0,66	0,09
ASES01	537	409	0	0	0	0	0	0	0	0
ASIS01	91	-	0	-	0	-	1	-	1,1	-
DBLK	1455	1461	4	0	0,27	0	0	0	0	0
OXGN2	644	-	0	-	0	-	0	-	0	-
LDWR	4142	5538	2	0	0,05	0	0	0	0	0
JCCX	339	326	0	0	0	0	0	0	0	0
JGQH	467	251	0	0	0	0	0	0	0	0
JIVB	349	118	0	0	0	0	0	0	0	0
JDWX	203	69	0	0	0	0	0	0	0	0
JNSR	65	1562	0	0	0	0	0	0	0	0
ZSAF	313	217	0	0	0	0	0	2	0	0,92
WTEC	21	34	13	14	61,9	41,18	0	0	0	0

Remark: Data transmitted through email displayed an error rate close to 100% due to email syntax and were thus regarded as not relevant and excluded from errors total amount.

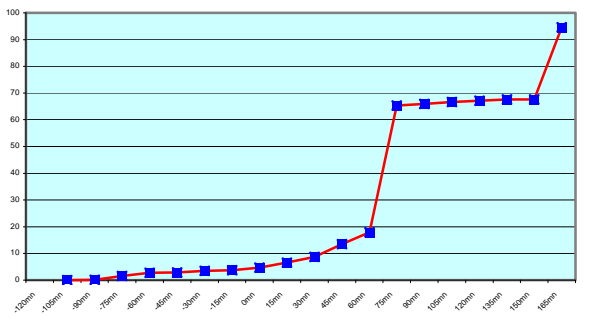
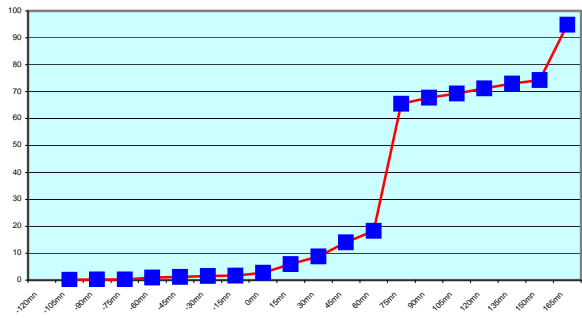
5. Mean time before the integration of the messages in the GTS in Toulouse. HH is the synoptic hour of reference.

2007

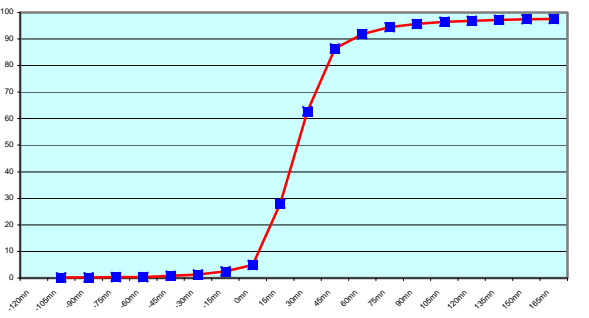
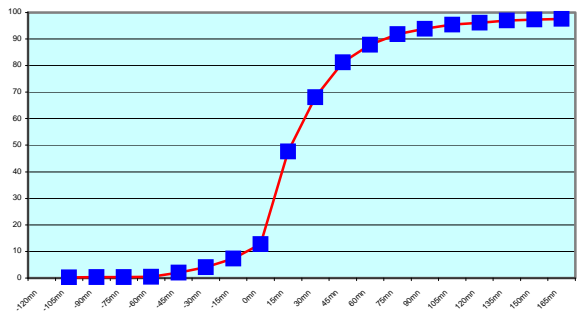
2008



Offenbach (16 818 and 18 686 reports)



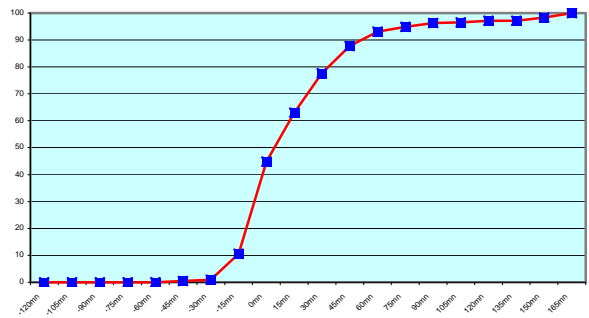
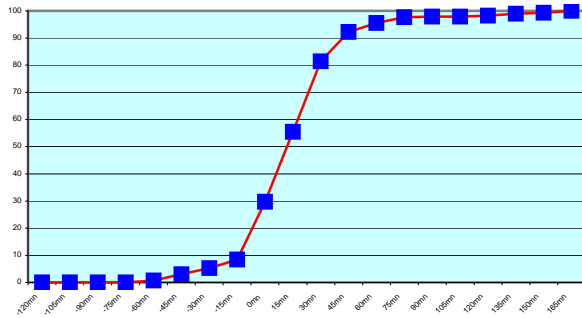
Exeter (6 552 and 6 724 reports)



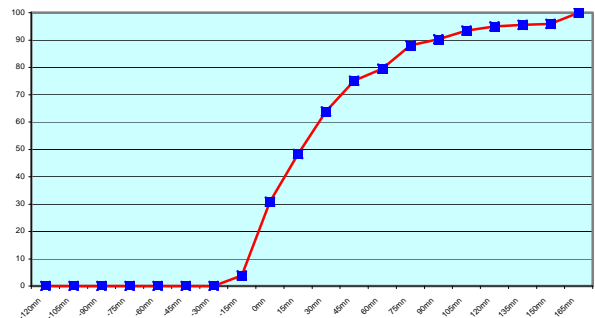
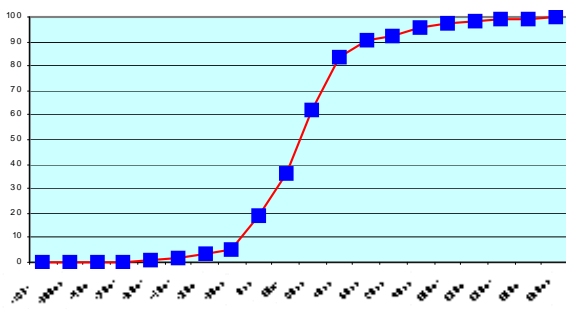
Email (4 465 and 2 793 reports)

2007

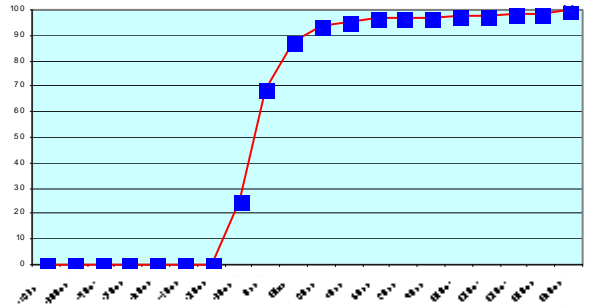
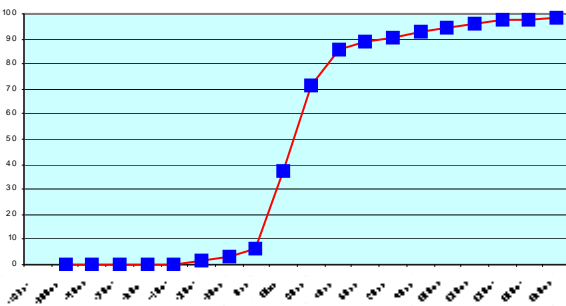
2008



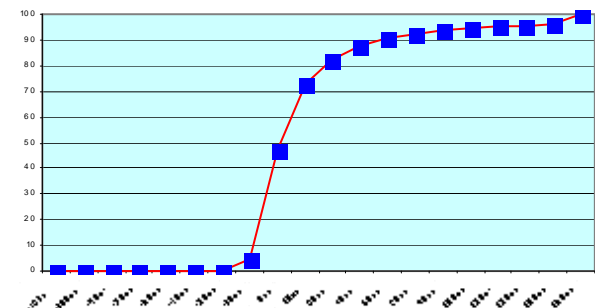
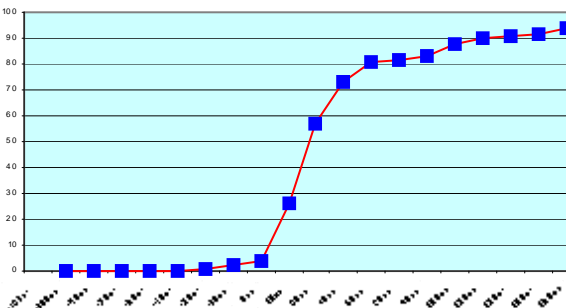
ASEU01 (1 808 and 797 reports)



ASEU02 (804 and 518 reports)

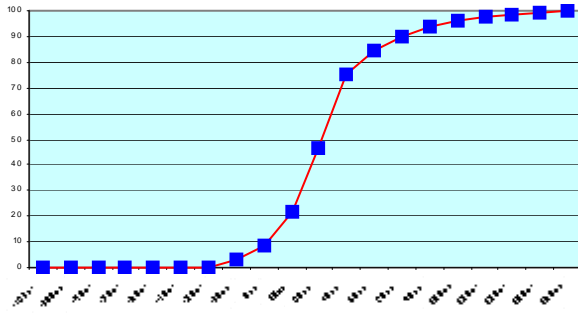


ASEU03 (778 and 429 reports)

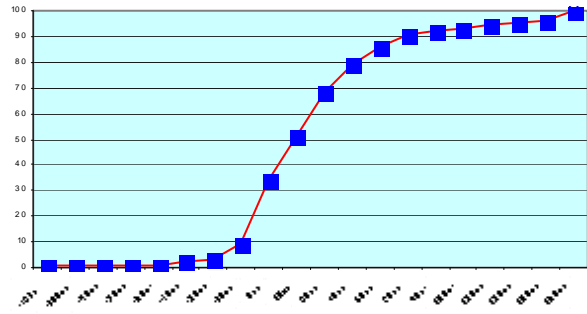


ASEU04 (718 and 778 reports)

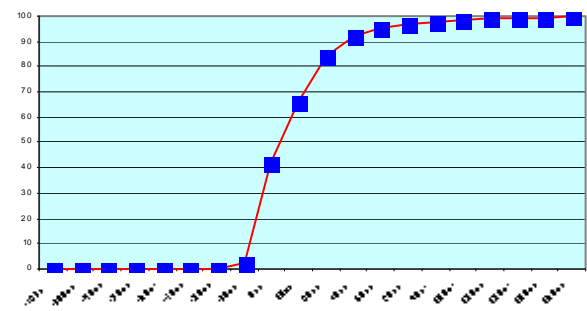
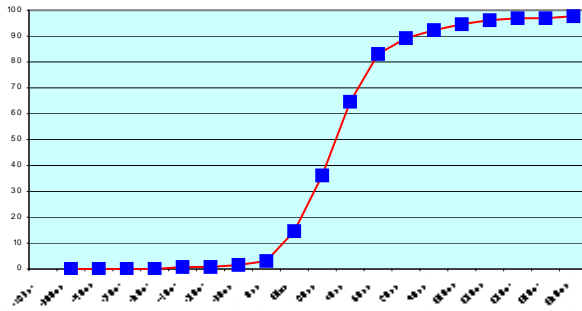
2007



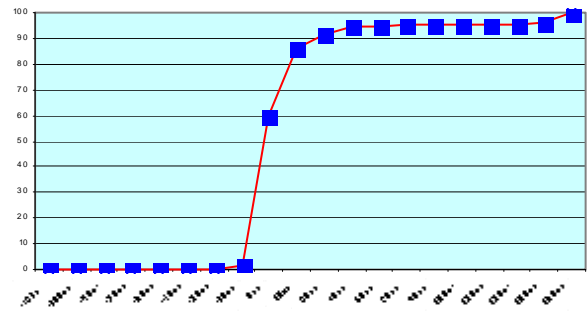
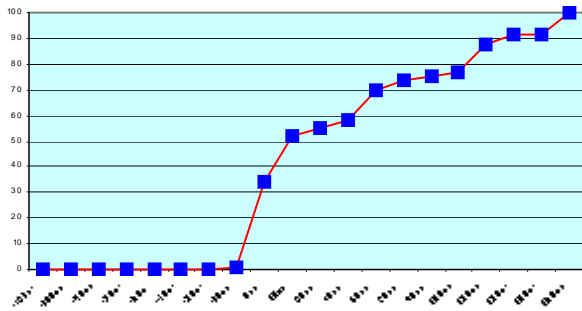
2008



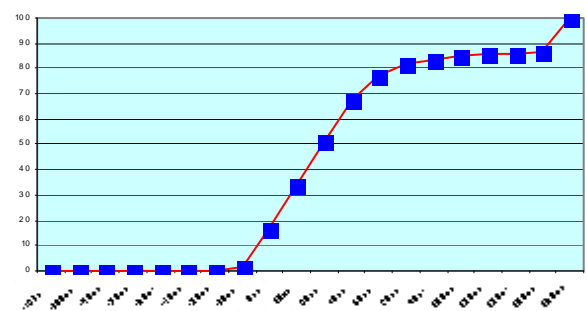
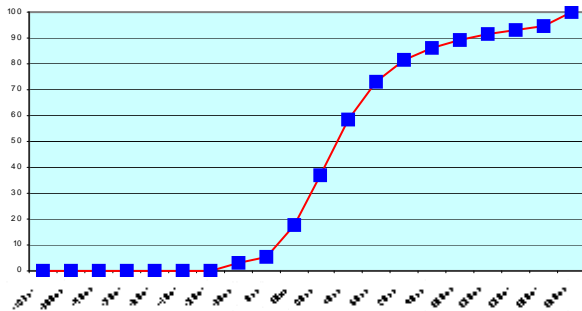
ASEU05 (1 192 and 927 reports)



ASDE01 (1 149 and 1 055 reports)

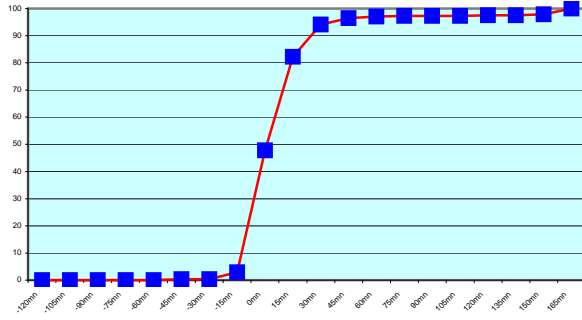


ASDE02 (841 and 929 reports)

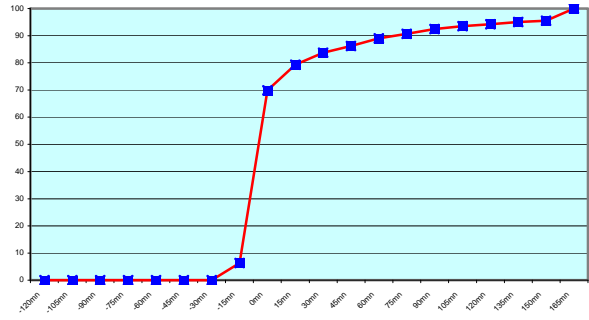


ASDE03 (1 172 and 1 032 reports)

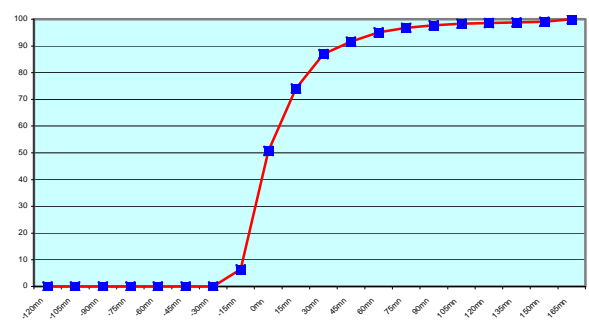
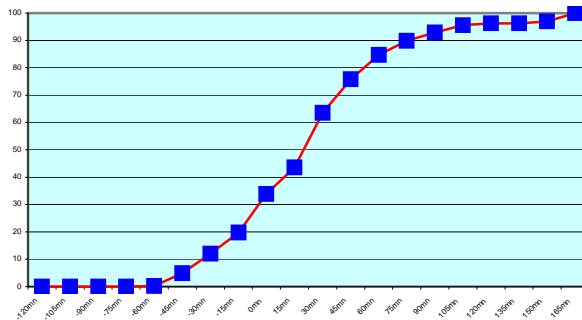
2007



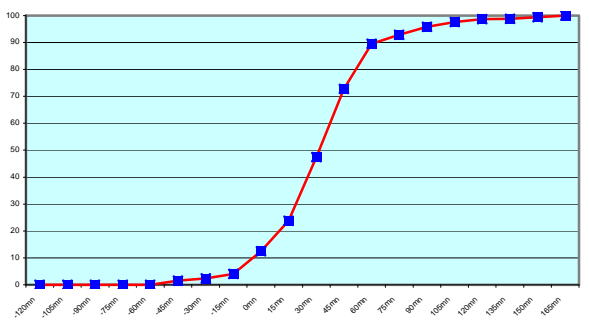
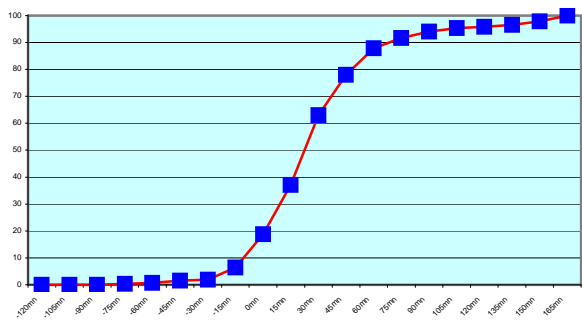
2008



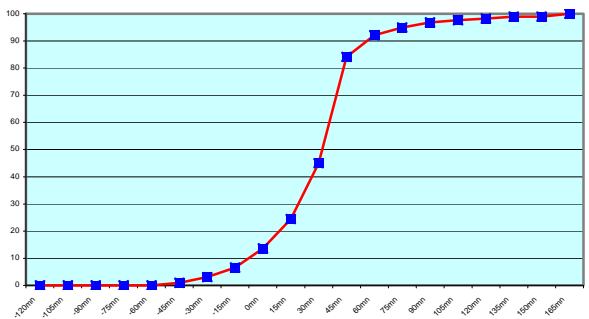
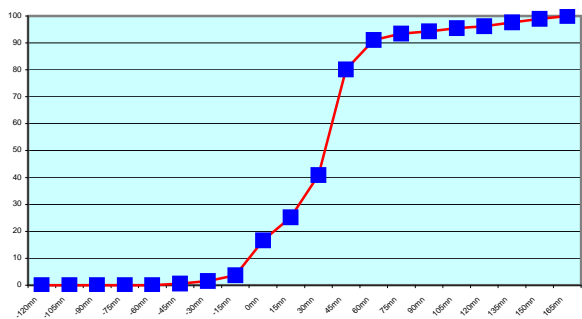
ASDE04 (1 353 and 1 044 reports)



ASGB01 (811 and 809 reports)

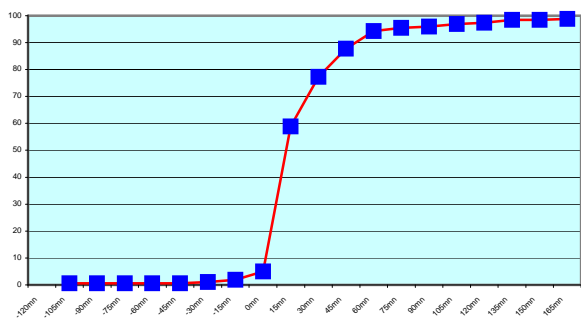


ASDK01 (2 009 and 2 381 reports)

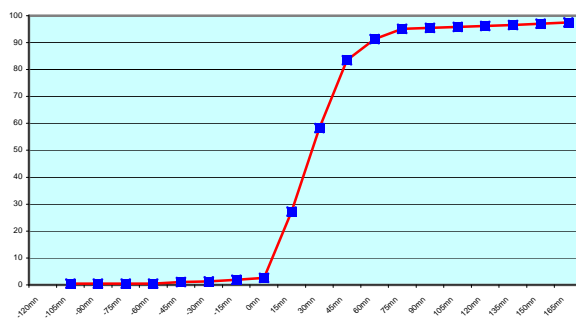


ASDK02 (935 and 1 119 reports)

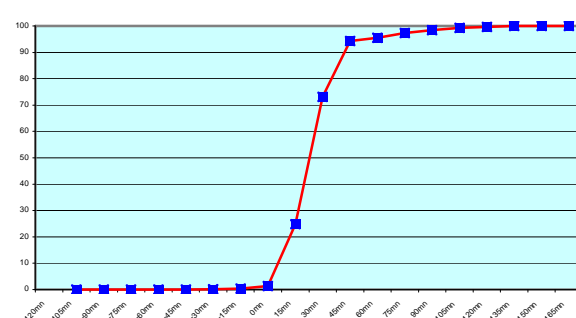
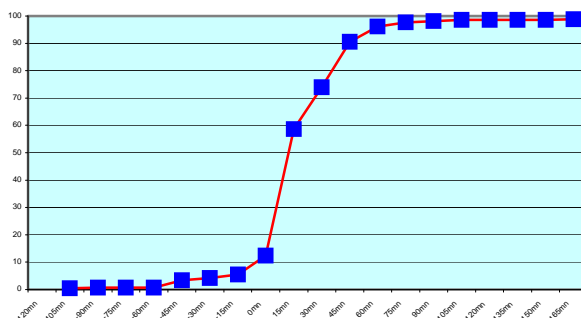
2007



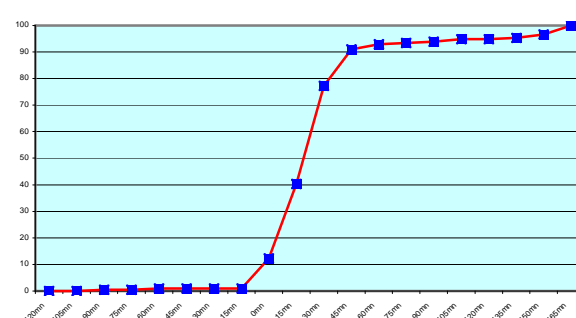
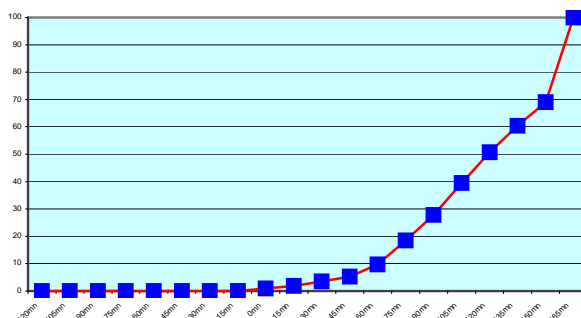
2008



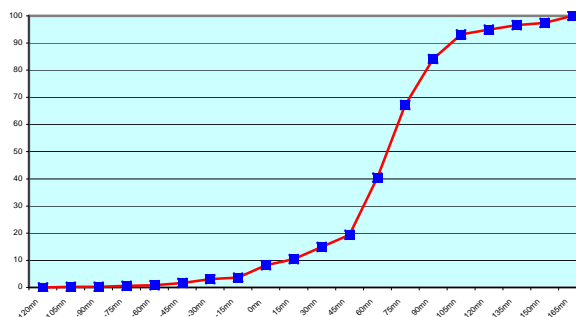
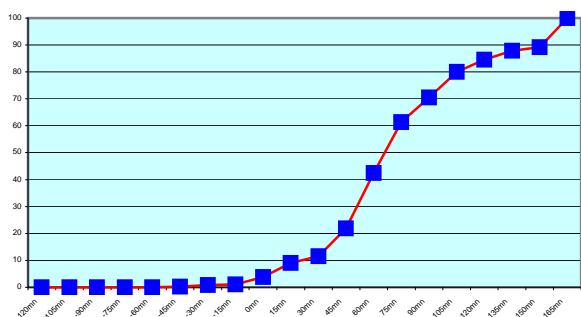
ASFR1 (1 073 and 940 reports)



ASFR2 (914 and 1 083 reports)

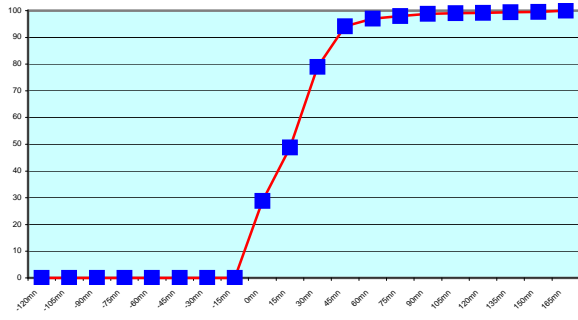


ASES01 (537 and 409 reports)

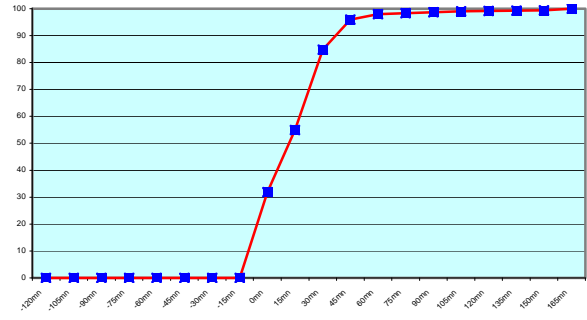


DBLK (1 455 and 1 461 reports)

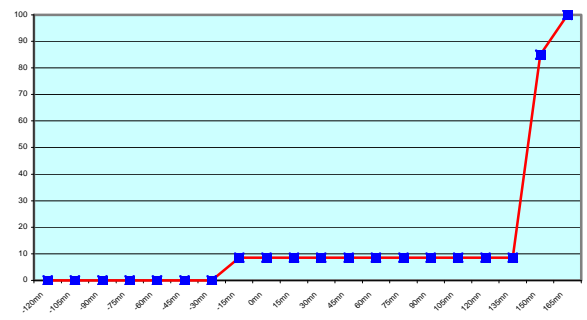
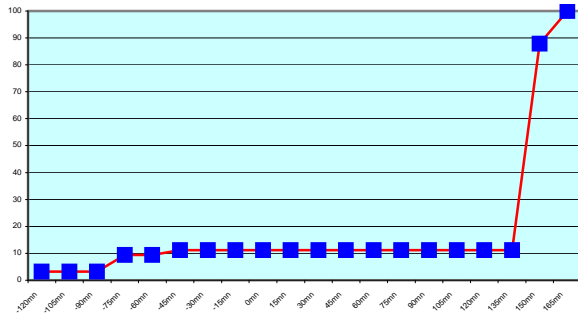
2007



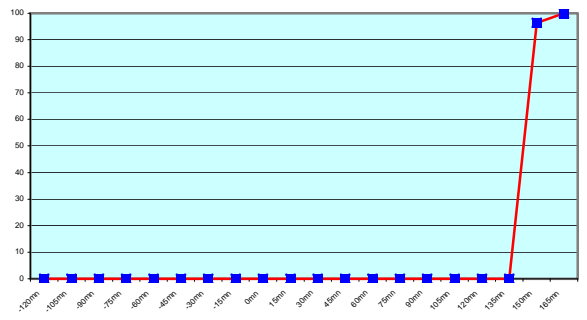
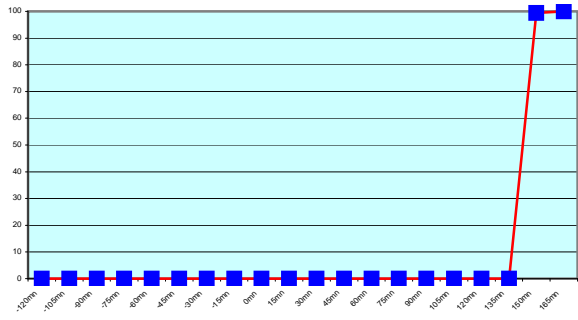
2008



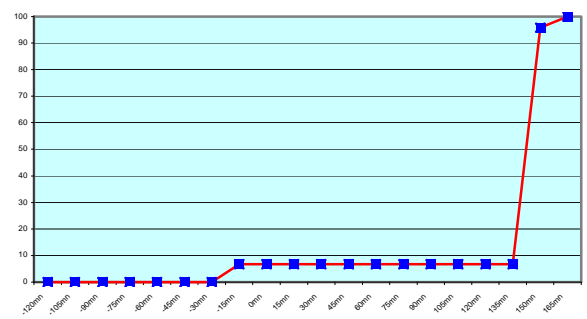
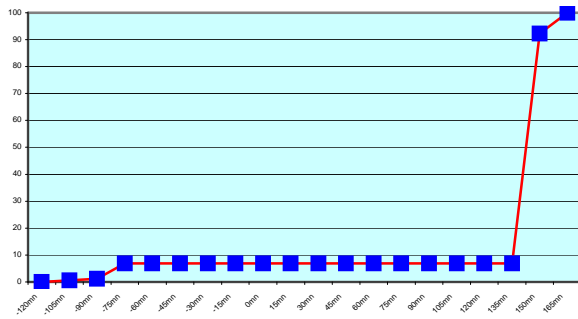
LDWR (4 142 and 5 538 reports)



JCCX (339 and 326 reports)



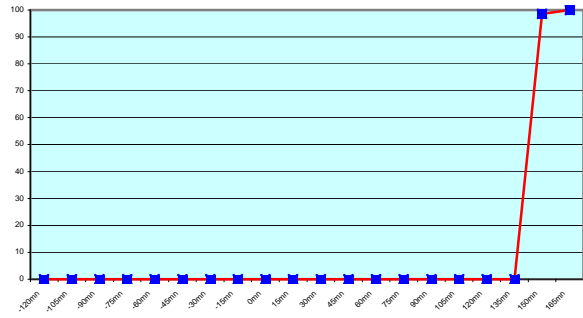
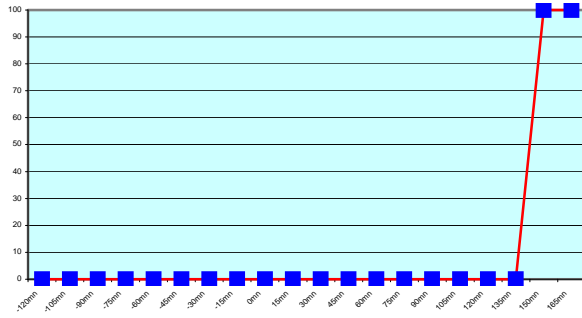
JGQH (467 and 251 reports)



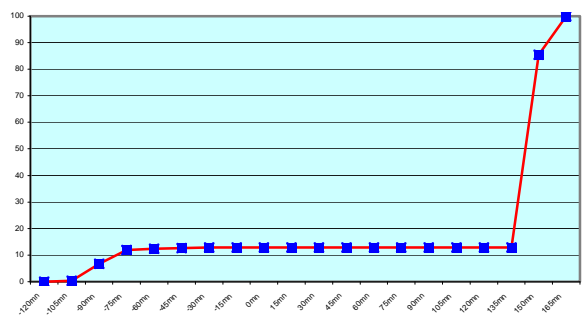
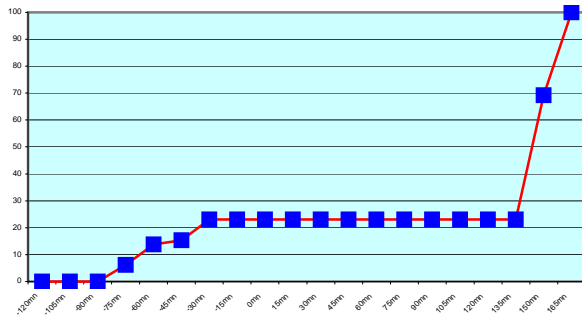
JIVB (349 and 251 reports)

2007

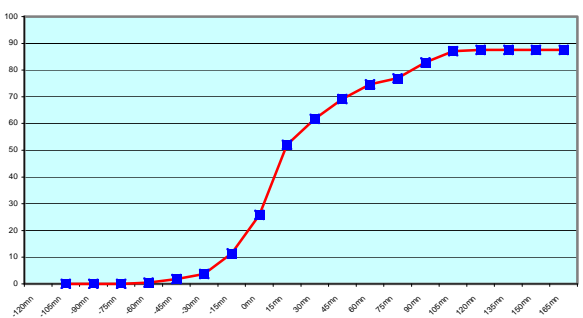
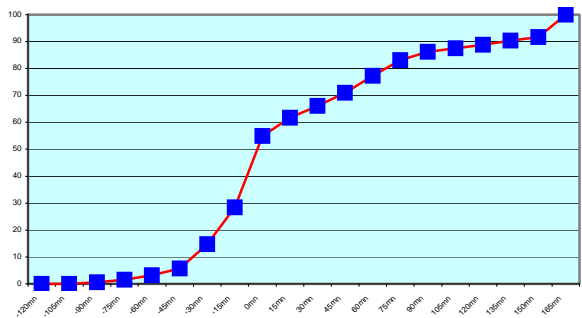
2008



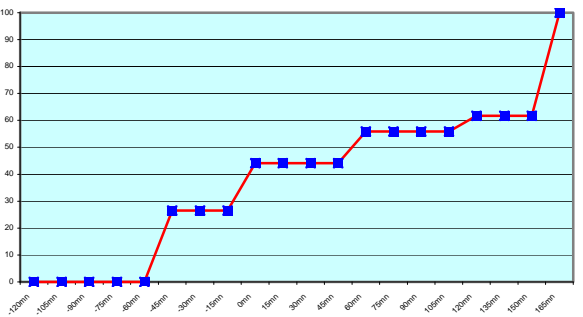
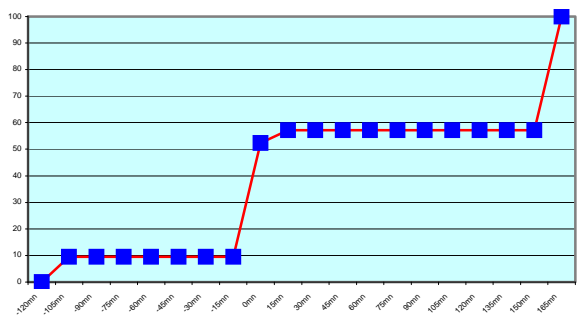
JDWX (203 and 69 reports)



JNSR (65 and 1 562 reports)

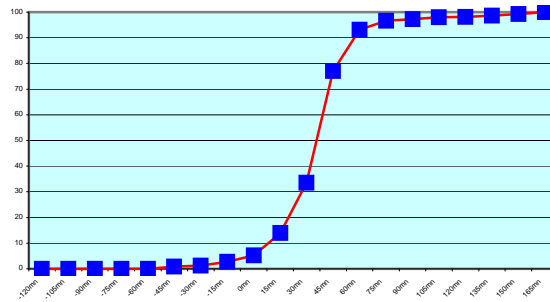


ZSAF (313 and 217 reports)

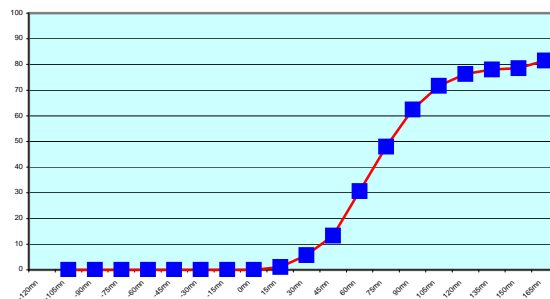


WTEC (21 and 34 reports)

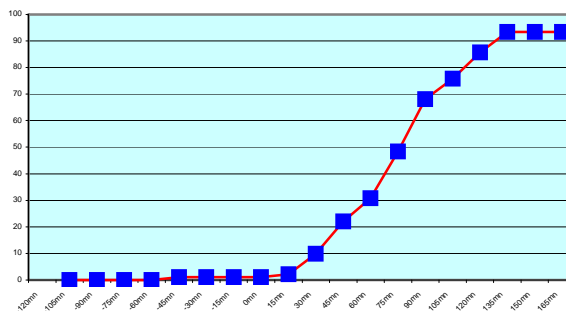
2007



OXGN2 (644 reports)



V2XM (173 reports)



ASIS01 (91 reports)

During 2008, Météo-France Toulouse received 7058 upper air message (TEMP) from ships and platform. This number of messages is similar to 2007's one.

The reports were received from 26 different call signs; two of them were test call signs. The quality of the ASAP reports was generally of a high standard, with only a small percentage of erroneous data.

A few corrupted call signs can be seen from time to time but with a frequency much lower than in 2007.

Japanese ships seems to follow a different procedure with an important shift between the sending of the message and the synoptic hour.

Some ships improved significantly their delay of transmission (visible on the charts above) from 2007 to 2008 : ASDE02, ASGB01, ASES01.

There is no significant degradation.