

Joint WMO/IOC Technical Commission for  
Oceanography - Ship Observation Team

# **End-to-end report of the ASAP data dissemination performance**

## **October to December 2007**

## 1. Introduction

Météo-France is in charge of a end-to-end report of the ASAP data dissemination performance.

The matter of this paper is to evaluate the results of the three last months (October 2007 – December 2007).

## 2. Information available at Météo-France

TEMP-SHIP messages are received at LFPW (Toulouse) from EGRR (Exeter) and EDZW (Offenbach).

The following information is available :

Reception at LFPW	Broadcast by LFPW
Call sign	Call sign
Header	Channel
Channel	Broadcast date
Reception date	Time lapse
Size	Broadcast size
Format	Recipient
Error	
Operator	

### 3. List of call signs available

Country	Call sign	Country	Call sign
Denmark	ASDK01	Japan	JCCX
	ASDK02		JGQH
	OXGN2		JIVB
E-ASAP	ASEU01		JDWX
	ASEU02		JNSR
	ASEU03	Norway	LDWR
	ASEU04	South Africa	ZSAF
	ASEU05	Spain	EBUQ then ASES01
France	ASFR1	United Kingdom	ASGB01
	ASFR2	USA	WTEC
Germany	ASDE01	Iceland	V2XM
	ASDE02	Australia	3FPI7
	ASDE03	Italia	ASIS01
	ASDE04	???	SHIP
	DBLK		

Some ships have changed their call sign during this period. In such a case, we use the new call sign for all the period when the correspondence is known.

#### 4. Origin of the messages

Call Sign	Offenbach	Exeter	Telex	Email	Mariner	Supervis	X25
ASEU01	296	0	0	0	0	0	0
ASEU02	236	0	0	0	0	0	0
ASEU03	100	4	0	128	0	0	0
ASEU04	164	0	0	0	0	0	0
ASEU05	480	0	0	0	0	0	0
ASDE01	312	0	0	0	0	0	0
ASDE02	271	0	0	0	0	0	0
ASDE03	270	0	0	0	0	0	0
ASDE04	392	0	0	0	0	0	0
ASGB01	294	0	0	0	0	0	0
ASDK01	238	269	0	0	0	0	0
ASDK02	262	0	0	0	0	0	0
ASFR1	0	0	0	261	0	0	0
ASFR2	0	0	0	275	0	2	0
DBLK	310	0	0	0	0	0	0
ASES01	0	30	0	18	0	0	0
LDWR	1428	0	0	0	0	0	0
JCCX	0	29	0	0	0	0	0
JGQH	0	68	0	0	0	0	0
JIVB	0	32	0	0	0	0	0
JDWX	0	64	0	0	0	0	0
ZSAF	0	0	0	135	0	0	0
WTEC	0	6	0	0	0	0	0
SHIP	0	5	0	0	0	0	0
Wrong or strange call signs							
ARGU	0	5	0	0	0	0	0
ASDE09	68	0	0	0	0	0	0
RAN	0	6	0	0	0	0	0
RAN35309	0	1	0	0	0	0	0
S35309	0	2	0	0	0	0	0
XXXXX	230	736	0	41	0	0	0
numer.	7	0	0	1	0	0	0

Mariner: French navy military sounding  
 Supervis: handled by operator

## 5. Global system performance

Month	Origin	Nb of messages received	Nb of messages in error	Percentage of messages in error	Nb of messages with operator action	Percentage of messages with operator action
2007-Oct	Offenbach	1631	6	0,37		
	Exeter	508	4	0,79		
	Telex	0	not relevant	not relevant		
	Email	292	not relevant	not relevant		
	Mariner	0	not relevant	not relevant		
	X25	0	not relevant	not relevant		
	Supervis	2	0	0		
	<b>Total</b>	2139	10	0,47	2	0,09
2007-Nov	Offenbach	1640	0	0		
	Exeter	363	2	0,55		
	Telex	0	not relevant	not relevant		
	Email	236	not relevant	not relevant		
	Mariner	0	not relevant	not relevant		
	X25	0	not relevant	not relevant		
	Supervis	0	0	not relevant		
	<b>Total</b>	2003	2	0,1	0	0
2007-Dec	Offenbach	2087	0	0		
	Exeter	386	0	0		
	Telex	0	not relevant	not relevant		
	Email	331	not relevant	not relevant		
	Mariner	0	not relevant	not relevant		
	X25	0	not relevant	not relevant		
	Supervis	0	0	not relevant		
	<b>Total</b>	2473	0	0	0	0
<b>Total</b>	Offenbach	5358	6	0,11		
	Exeter	1257	6	0,48		
	Telex	0	0	not relevant		
	Email	859	859	100		
	Mariner	0	not relevant	not relevant		
	X25	0	not relevant	not relevant		
	Supervis	2	0	0		
	<b>Total</b>	7476	12	0,18	2	0,03

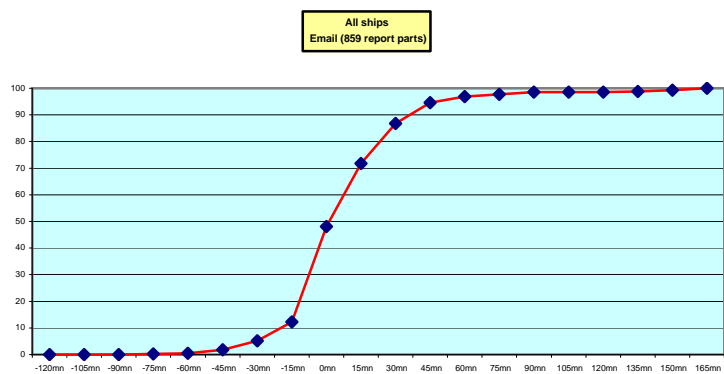
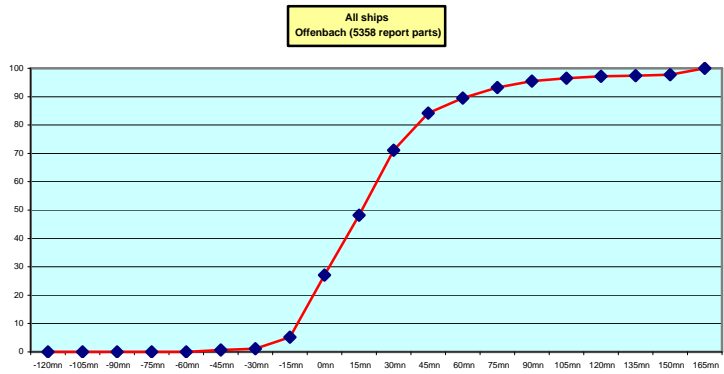
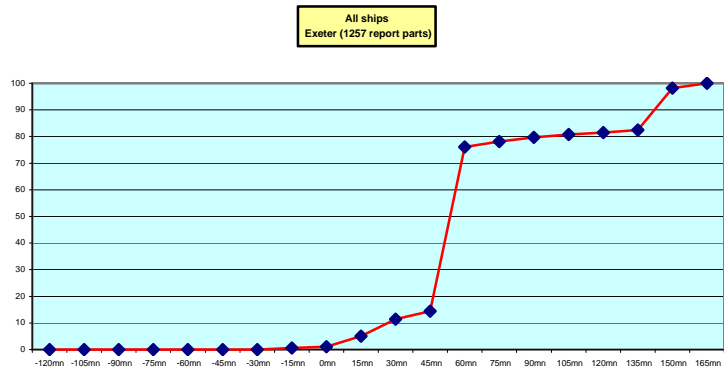
**Remark:** Email messages were excluded from the number of messages in error and from the relative percentage as values are regarded as not relevant. Not relevant percentages are due to not relevant values or to a total amount of data equal to zero.

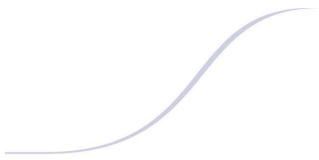
## 6. Global result of the syntactic check for the messages for each call sign.

Call Sign	Nb of messages received	Nb of messages in error	Percentage of messages in error	Nb of messages with operator action	Percentage of messages with operator action
ASEU01	296	0	0	0	0
ASEU02	236	0	0	0	0
ASEU03	232	0	0	0	0
ASEU04	164	0	0	0	0
ASEU05	480	0	0	0	0
ASDE01	312	0	0	0	0
ASDE02	271	0	0	0	0
ASDE03	270	0	0	0	0
ASDE04	392	0	0	0	0
ASGB01	294	0	0	0	0
ASDK01	507	0	0	0	0
ASDK02	262	0	0	0	0
ASFR1	261	0	0	0	0
ASFR2	277	0	0	2	0,72
DBLK	310	4	1,29	0	0
ASES01	48	0	0	0	0
LDWR	1428	2	0,14	0	0
JCCX	29	0	0	0	0
JGQH	68	0	0	0	0
JIVB	32	0	0	0	0
JDWX	64	0	0	0	0
ZSAF	135	0	0	0	0
WTEC	6	6	100	0	0
SHIP	5	0	0	0	0
Wrong or strange call signs					
ARGU	5	0	0	0	0
ASDE09	68	0	0	0	0
RAN	6	0	0	0	0
RAN35309	1	0	0	0	0
S35309	2	0	0	0	0
XXXXX	1007	0	0	0	0
numer.	8	0	0	0	0

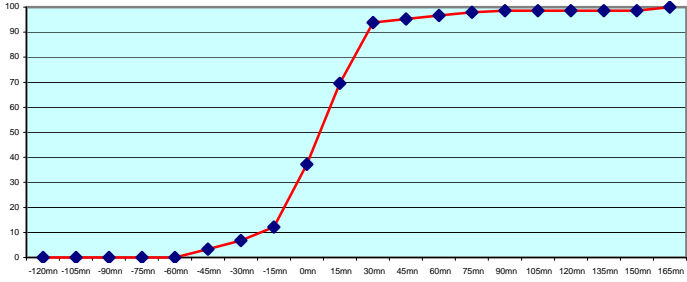
**Remark:** Data transmitted through email displayed an error rate close to 100% due to email syntax and were thus regarded as not relevant and excluded from errors total amount.

7. Mean time before the integration of the messages in the GTS in Toulouse. HH is the synoptic hour of reference.

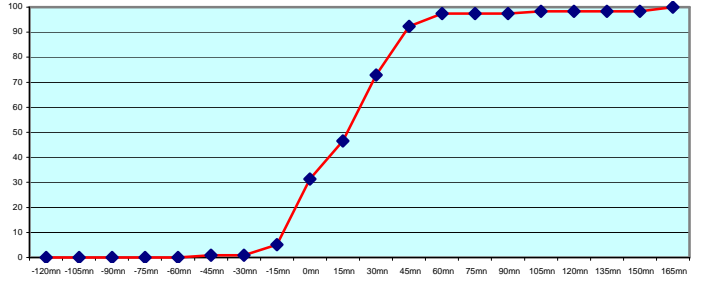




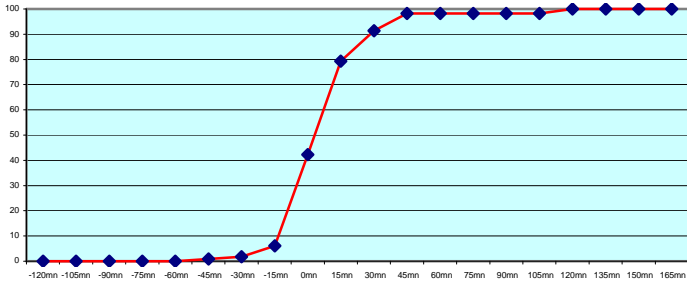
**ASEU01 (296 report parts)**  
296 Offenbach



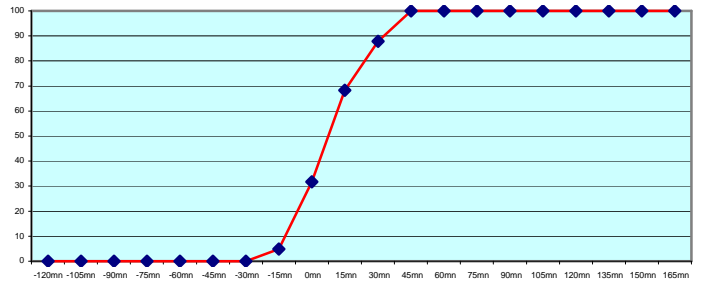
**ASEU02 (236 report parts)**  
236 Offenbach



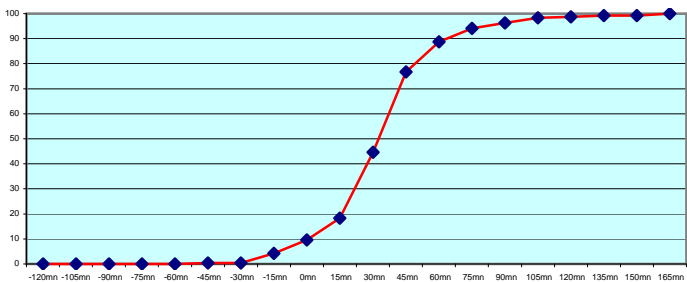
**ASEU03 (228 report parts)**  
100 Offenbach and 128 Email



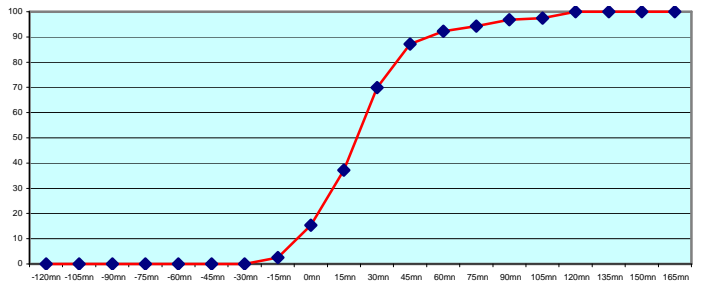
**ASEU04 (164 report parts)**  
164 Offenbach



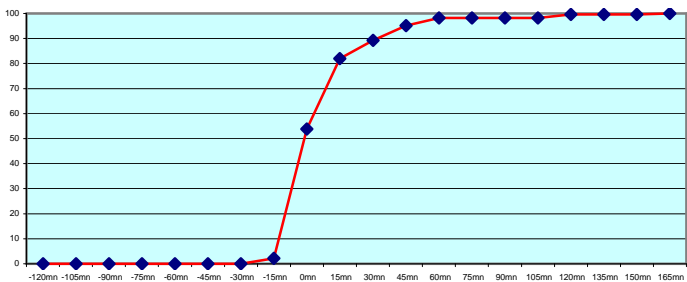
**ASEU05 (480 report parts)**  
480 Offenbach



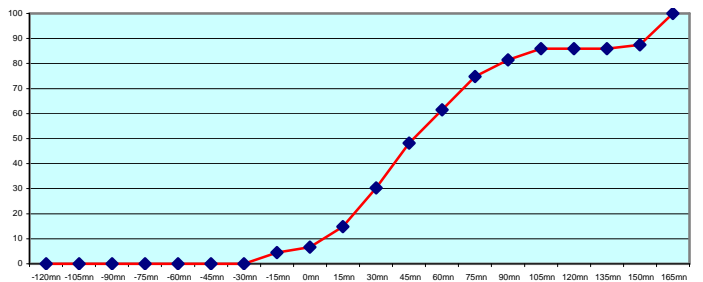
**ASDE01 (312 report parts)**  
312 Offenbach



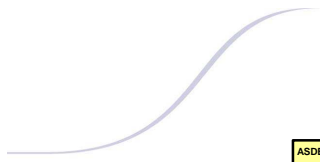
**ASDE02 (271 report parts)**  
271 Offenbach



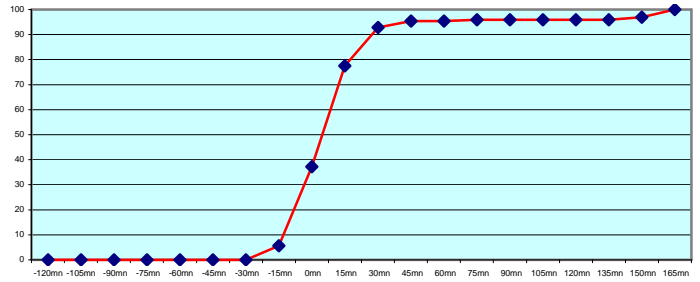
**ASDE03 (270 report parts)**  
270 Offenbach



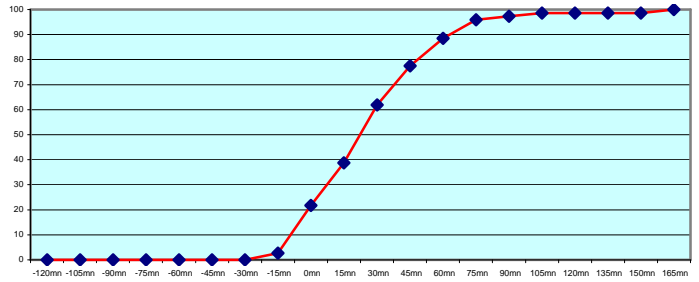




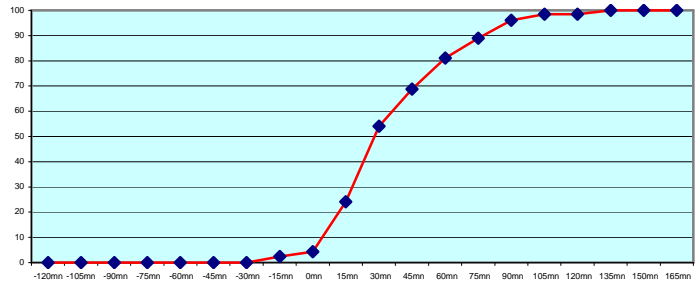
**ASDE04 (392 report parts)**  
392 Offenbach



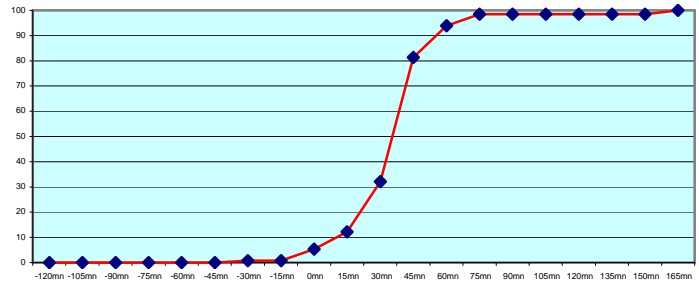
**ASGB01 (294 report parts)**  
294 Offenbach



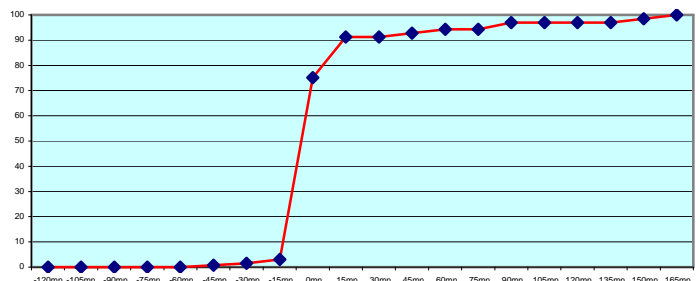
**ASDK01 (507 report parts)**  
238 Offenbach and 269 Exeter



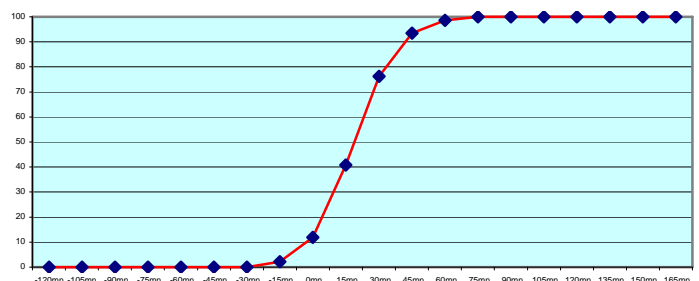
**ASDK02 (262 report parts)**  
262 Offenbach



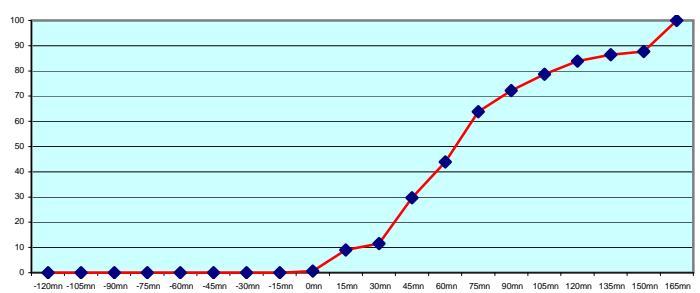
**ASFR1 (261 report parts)**  
261 Email



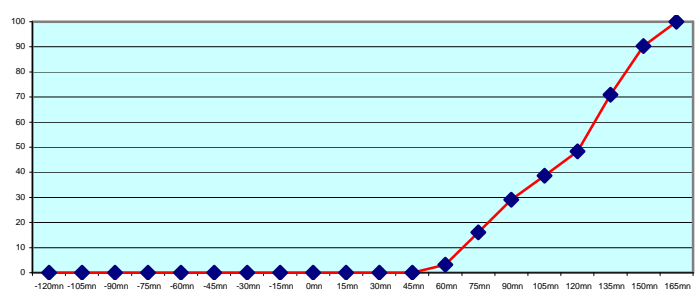
**ASFR2 (277 report parts)**  
275 Email and 2 Supervis

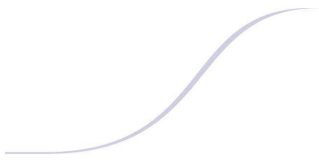


**DBLK (310 report parts)**  
310 Offenbach

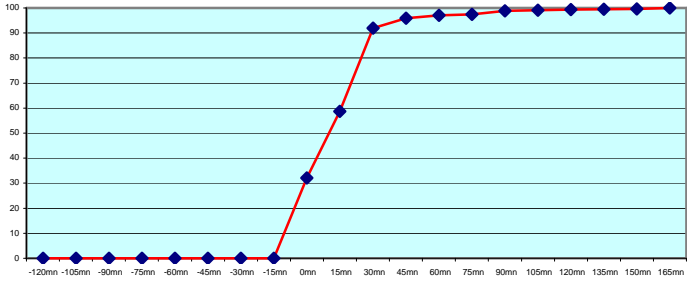


**ASES01 (48 report parts)**  
30 Exeter and 18 Email

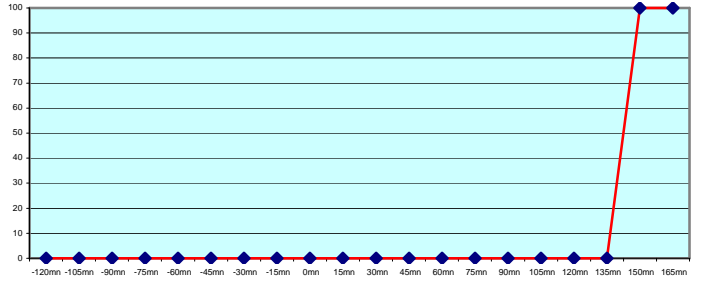




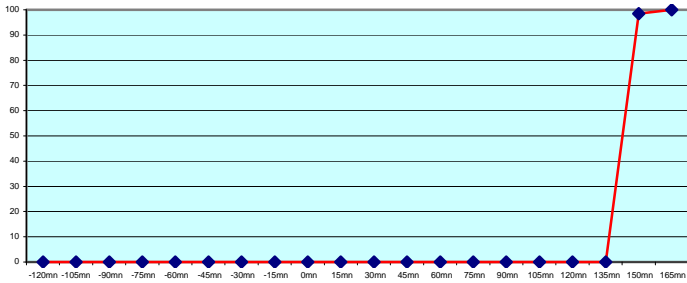
**LDWR (1428 report parts)**  
1428 Offenbach



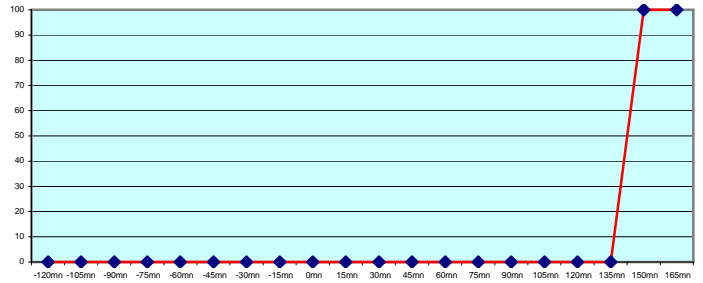
**JCCX (29 report parts)**  
29 Exeter



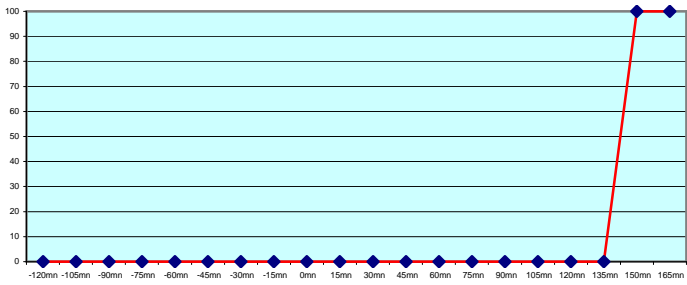
**JGQH (68 report parts)**  
68 Exeter



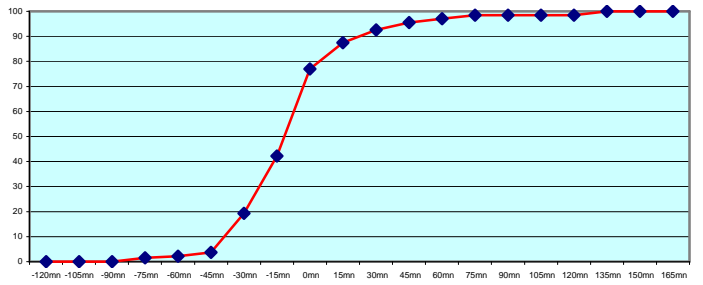
**JIVB (32 report parts)**  
32 Exeter



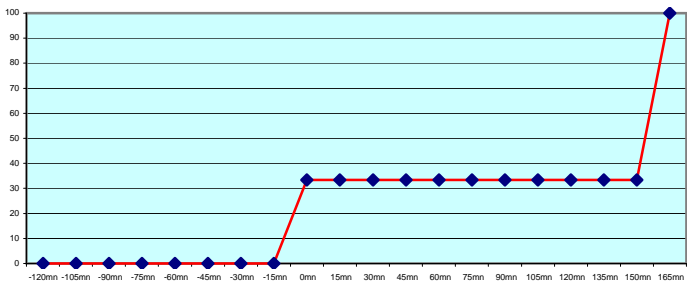
**JDWX (64 report parts)**  
64 Exeter

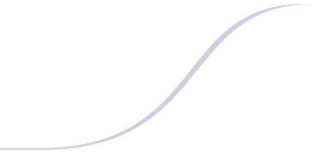


**ZSAF (135 report parts)**  
135 Email



**WTEC (6 report parts)**  
6 Exeter





Most of the ships results are good. A few ship (EBUQ , DBLK and WTEC) display a large delay in message reception. Japanese ships seems to follow a different procedure with an important shift between the sending of the message and the synoptic hour.

For any comment or remark please contact Météo-France Toulouse DSO/DOA department  
Gérard Rey ([gerard.rey@meteo.fr](mailto:gerard.rey@meteo.fr))  
Daniel Bouchara ([daniel.bouchara@meteo.fr](mailto:daniel.bouchara@meteo.fr))  
Hugues Jardat ([hugues.jardat@meteo.fr](mailto:hugues.jardat@meteo.fr))