

Joint WMO/IOC Technical Commission for
Oceanography - Ship Observation Team

End-to-end report of the ASAP data dissemination performance

2007

January to December

1. Introduction

Météo-France is in charge of a end-to-end report of the ASAP data dissemination performance.

The matter of this paper is to evaluate the results of the last year (January 2007 – December 2007).

2. Information available at Météo-France

TEMP-SHIP messages are mainly received at LFPW (Toulouse) from EGRR (Exeter) and EDZW (Offenbach).

The following information is available :

Reception at LFPW	Broadcast by LFPW
Call sign	Call sign
Header	Channel
Channel	Broadcast date
Reception date	Time lapse
Size	Broadcast size
Format	Recipient
Error	
Operator	

3. List of call signs available

Country	Call sign	Country	Call sign
Denmark	ASDK01	Japan	JCCX
	ASDK02		JGQH
	OXGN2		JIVB
E-ASAP	ASEU01		JDWX
	ASEU02		JNSR
	ASEU03	Norway	LDWR
	ASEU04	South Africa	ZSAF
	ASEU05	Spain	EBUQ then ASES01
France	ASFR1	United Kingdom	ASGB01
	ASFR2	USA	WTEC
Germany	ASDE01	Iceland	V2XM
	ASDE02	Australia	3FPI7
	ASDE03	Italia	ASIS01
	ASDE04	???	SHIP
	DBLK		

Some ships have changed their call sign during this period. In such a case, we use the new call sign for all the period when the correspondence is known.

4. Origin of the messages

Call Sign	Offenbach	Exeter	Telex	Email	Mariner	Supervis	X25
ASEU01	928	8	26	146	0	0	0
ASEU02	648	87	0	69	0	0	0
ASEU03	100	66	10	595	0	7	0
ASEU04	423	12	28	251	0	4	0
ASEU05	1012	108	0	72	0	0	0
ASDE01	908	4	16	218	0	3	0
ASDE02	841	0	0	0	0	0	0
ASDE03	903	0	20	249	0	0	0
ASDE04	1320	0	6	27	0	0	0
ASGB01	711	0	18	82	0	0	0
ASDK01	933	1076	0	0	0	0	0
ASDK02	669	266	0	0	0	0	0
ASFR1	0	0	45	1023	0	5	0
ASFR2	0	0	46	862	0	6	0
ASES01	0	491	4	42	0	0	0
ASIS01	0	8	0	82	0	1	0
DBLK	1455	0	0	0	0	0	0
OXGN2	642	0	0	0	0	0	2
LDWR	4142	0	0	0	0	0	0
JCCX	0	339	0	0	0	0	0
JGQH	0	467	0	0	0	0	0
JIVB	0	349	0	0	0	0	0
JDWX	0	203	0	0	0	0	0
JNSR	0	65	0	0	0	0	0
ZSAF	0	0	0	313	0	0	0
WTEC	0	21	0	0	0	0	0
Wrong or strange call sign							
/SFR1	0	0	0	1	0	0	0
ALEX	8	0	0	0	0	0	0
ARGU	0	5	0	0	0	0	0
ASAP09	22	0	0	0	0	0	0
ASBG01	6	0	0	0	0	0	0
ASDE04u	1	0	0	0	0	0	0
ASDE07	12	0	0	0	0	0	0
ASDE08	8	0	0	0	0	0	0
ASDE09	169	0	0	0	0	0	0
ASDE7	12	0	0	0	0	0	0
ASFR1OFF	0	0	0	1	0	0	0
NETTI	4	0	0	0	0	0	0
NNNN	4	0	0	0	0	0	0
RAN	0	6	0	0	0	0	0
RAN35309	0	1	0	0	0	0	0
S35309	0	3	0	0	0	0	0
SHIP	0	13	0	1	40	0	0
TTAA	0	0	0	0	0	0	1
TTBB	0	1	0	0	0	0	0
UUDD	0	0	0	1	0	0	0
V2XM	0	38	15	116	0	4	0
XXXXX	767	2915	22	295	0	9	0
numer.	170	0	0	17	0	0	0

Mariner: French navy military sounding
Supervis: handled by operator

5. Global system performance

Month	Origin	Nb of messages received	Nb of messages in error	Percentage of messages in error	Nb of messages with operator action	Percentage of messages with operator action
2007-Jan	Offenbach	548	4	0,73		
	Exeter	652	0	0		
	Telex	256	not relevant	not relevant		
	Email	327	not relevant	not relevant		
	Mariner	0	not relevant	not relevant		
	X25	0	not relevant	not relevant		
	Supervis	9	3	33,33		
	Total	1456	247	16,96	9	0,61
2007-Feb	Offenbach	468	0	0		
	Exeter	551	0	0		
	Telex	0	not relevant	not relevant		
	Email	716	not relevant	not relevant		
	Mariner	0	not relevant	not relevant		
	X25	3	not relevant	not relevant		
	Supervis	3	0	0		
	Total	1019	0	0	3	0,29
2007-Mar	Offenbach	864	4	0,46		
	Exeter	710	0	0		
	Telex	0	not relevant	not relevant		
	Email	837	not relevant	not relevant		
	Mariner	0	not relevant	not relevant		
	X25	0	not relevant	not relevant		
	Supervis	15	4	26,67		
	Total	1574	4	0,25	15	0,94
2007-Apr	Offenbach	1383	2	0,14		
	Exeter	517	0	0		
	Telex	0	not relevant	not relevant		
	Email	385	not relevant	not relevant		
	Mariner	0	not relevant	not relevant		
	X25	0	not relevant	not relevant		
	Supervis	0	0	not relevant		
	Total	1900	2	0,11	0	0
2007-May	Offenbach	1490	4	0,27		
	Exeter	605	9	1,49		
	Telex	0	not relevant	not relevant		
	Email	320	not relevant	not relevant		
	Mariner	20	not relevant	not relevant		
	X25	0	not relevant	not relevant		
	Supervis	5	4	80		
	Total	2095	13	0,62	5	0,24
2007-Jun	Offenbach	1568	4	0,26		
	Exeter	588	0	0		
	Telex	0	not relevant	not relevant		
	Email	286	not relevant	not relevant		
	Mariner	20	not relevant	not relevant		
	X25	0	not relevant	not relevant		
	Supervis	1	1	100		
	Total	2156	4	0,19	1	0,05


2007-Jul	Offenbach	1566	0	0		
	Exeter	885	0	0		
	Telex	0	not relevant	not relevant		
	Email	242	not relevant	not relevant		
	Mariner	0	not relevant	not relevant		
	X25	0	not relevant	not relevant		
	Supervis	0	0	not relevant		
	Total	2451	0	0	0	0
2007-Aug	Offenbach	1839	4	0,22		
	Exeter	381	0	0		
	Telex	0	not relevant	not relevant		
	Email	229	not relevant	not relevant		
	Mariner	0	not relevant	not relevant		
	X25	0	not relevant	not relevant		
	Supervis	1	0	0		
	Total	2220	4	0,18	1	0,05
2007-Sep	Offenbach	1734	8	0,46		
	Exeter	406	4	0,99		
	Telex	0	not relevant	not relevant		
	Email	264	not relevant	not relevant		
	Mariner	0	not relevant	not relevant		
	X25	0	not relevant	not relevant		
	Supervis	3	0	0		
	Total	2140	12	0,56	3	0,14
2007-Oct	Offenbach	1631	6	0,37		
	Exeter	508	4	0,79		
	Telex	0	not relevant	not relevant		
	Email	292	not relevant	not relevant		
	Mariner	0	not relevant	not relevant		
	X25	0	not relevant	not relevant		
	Supervis	2	0	0		
	Total	2139	10	0,47	2	0,09
2007-Nov	Offenbach	1640	0	0		
	Exeter	363	2	0,55		
	Telex	0	not relevant	not relevant		
	Email	236	not relevant	not relevant		
	Mariner	0	not relevant	not relevant		
	X25	0	not relevant	not relevant		
	Supervis	0	0	not relevant		
	Total	2003	2	0,1	0	0
2007-Dec	Offenbach	2087	0	0		
	Exeter	386	0	0		
	Telex	0	not relevant	not relevant		
	Email	331	not relevant	not relevant		
	Mariner	0	not relevant	not relevant		
	X25	0	not relevant	not relevant		
	Supervis	0	0	not relevant		
	Total	2473	0	0	0	0

Total	Offenbach	16818	36	0,21		
	Exeter	6552	19	0,29		
	Telex	256	243	not relevant		
	Email	4465	4465	100		
	Mariner	40	not relevant	not relevant		
	X25	3	not relevant	not relevant		
	Supervis	39	12	30,77		
	Total	28173	55	0,24	39	0,17

Remark: Email messages were excluded from the number of messages in error and from the relative percentage as values are regarded as not relevant. Not relevant percentages are due to not relevant values or to a total amount of data equal to zero.

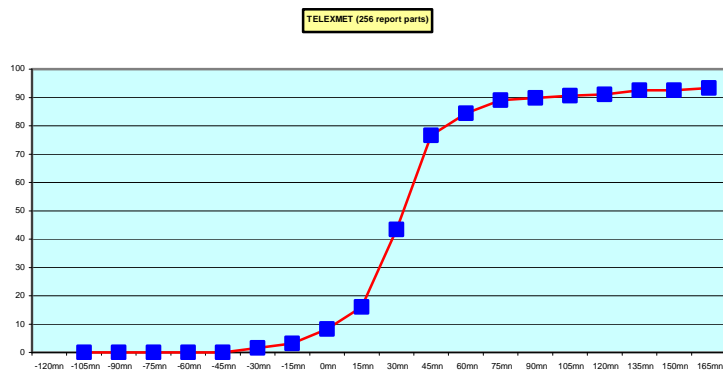
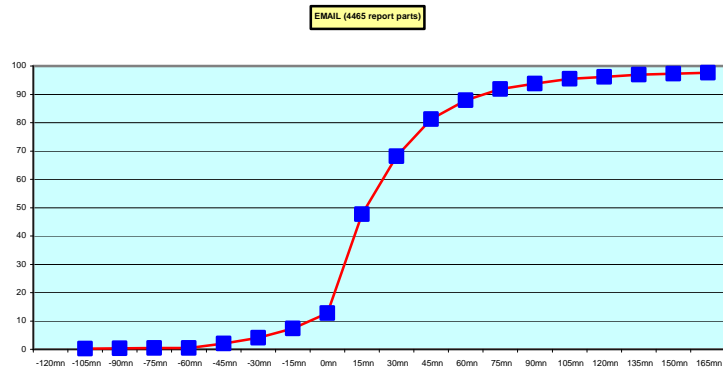
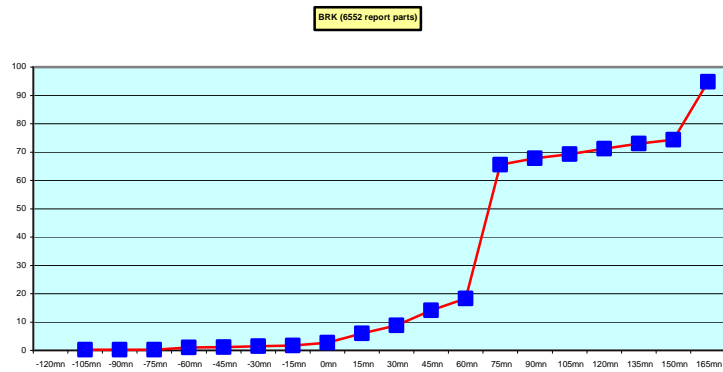
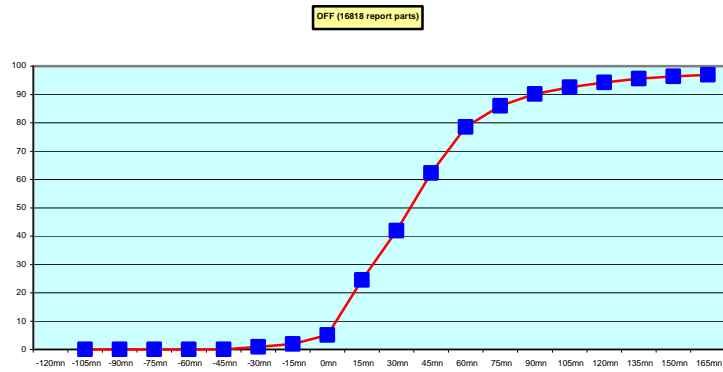
6. Global result of the syntactic check for the messages for each call sign.

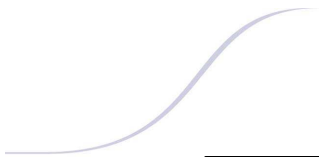
Call Sign	Nb of messages received	Nb of messages in error	Percentage of messages in error	Nb of messages with operator action	Percentage of messages with operator action
ASEU01	1108	2	0,18	0	0
ASEU02	804	2	0,25	0	0
ASEU03	778	0	0	7	0,9
ASEU04	718	8	1,11	4	0,56
ASEU05	1192	0	0	0	0
ASDE01	1149	8	0,7	3	0,26
ASDE02	841	8	0,95	0	0
ASDE03	1172	0	0	0	0
ASDE04	1353	0	0	0	0
ASGB01	811	0	0	0	0
ASDK01	2009	0	0	0	0
ASDK02	935	0	0	0	0
ASFR1	1073	3	0,28	5	0,47
ASFR2	914	4	0,44	6	0,66
ASES01	537	0	0	0	0
ASIS01	91	0	0	1	1,1
DBLK	1455	4	0,27	0	0
OXGN2	644	0	0	0	0
LDWR	4142	2	0,05	0	0
JCCX	339	0	0	0	0
JGQH	467	0	0	0	0
JIVB	349	0	0	0	0
JDWX	203	0	0	0	0
JNSR	65	0	0	0	0
ZSAF	313	0	0	0	0
WTEC	21	13	61,9	0	0
Wrong or strange call sign					
/SFR1	1	0	0	0	0
ALEX	8	0	0	0	0
ARGU	5	0	0	0	0
ASAP09	22	0	0	0	0
ASBG01	6	0	0	0	0
ASDE04u	1	0	0	0	0
ASDE07	12	0	0	0	0
ASDE08	8	0	0	0	0
ASDE09	169	0	0	0	0
ASDE7	12	0	0	0	0
ASFR1OFF	1	0	0	0	0
NETTI	4	0	0	0	0
NNNN	4	0	0	0	0
RAN	6	0	0	0	0
RAN35309	1	0	0	0	0
S35309	3	0	0	0	0
SHIP	54	0	0	0	0
TTAA	1	0	0	0	0
TTBB	1	0	0	0	0
UDD	1	0	0	0	0
V2XM	173	0	0	4	2,31
XXXXX	4008	13	0,32	9	0,22
numer.	187	0	0	0	0



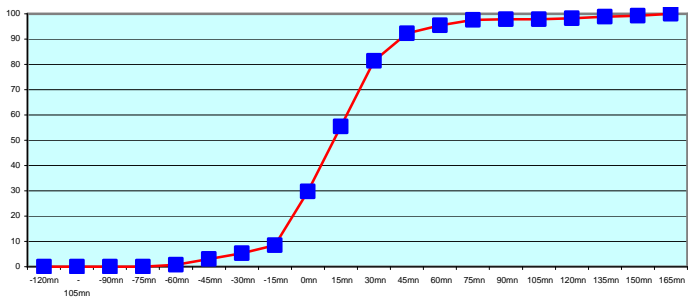
Remark: Data transmitted through email displayed an error rate close to 100% due to email syntax and were thus regarded as not relevant and excluded from errors total amount.

7. Mean time before the integration of the messages in the GTS in Toulouse. HH is the synoptic hour of reference.

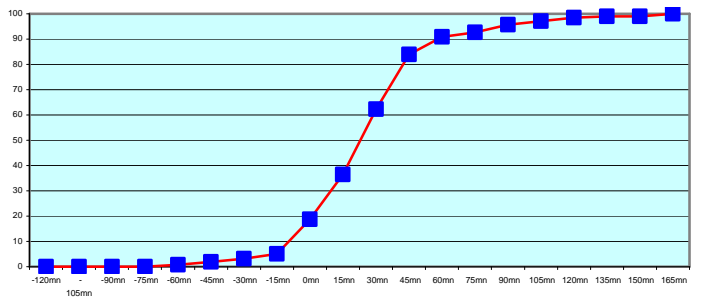




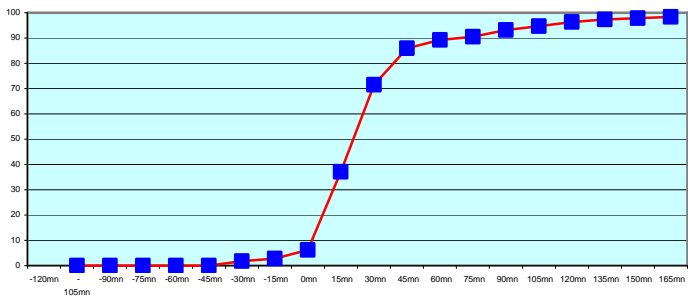
ASEU01 (1108 report parts) Offenbach 928 Exeter 8 Email 146 Telex 26



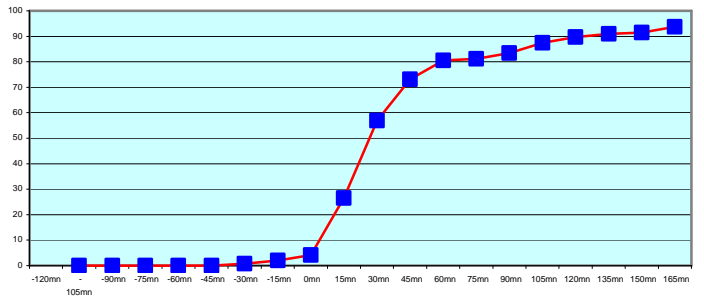
ASEU02 (804 report parts) Offenbach 648 Exeter 87 Email 69



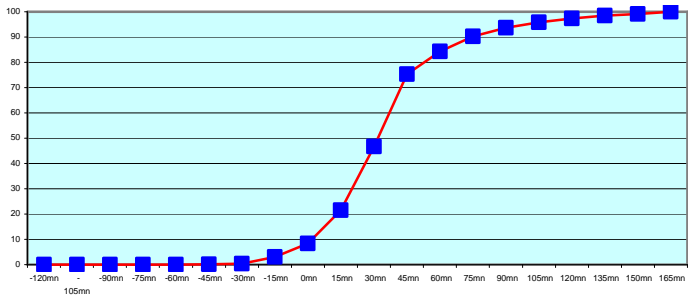
ASEU03 (778 report parts) Offenbach 100 Exeter 66 Email 595 Telex 10 with supervision 7



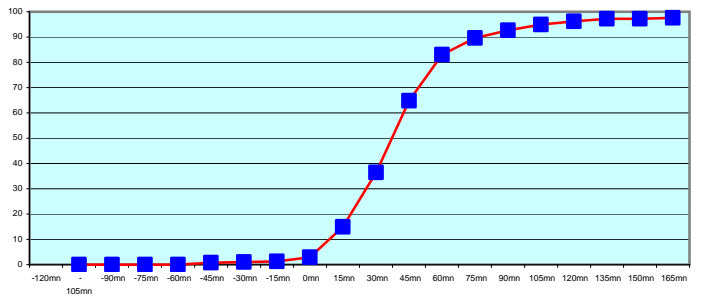
ASEU04 (718 report parts) Offenbach 423 Exeter 12 Email 251 Telex 28 with supervision 4



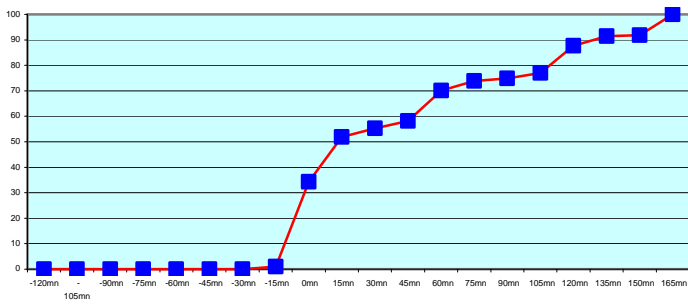
ASEU05 (1192 report parts) Offenbach 1012 Exeter 108 Email 72



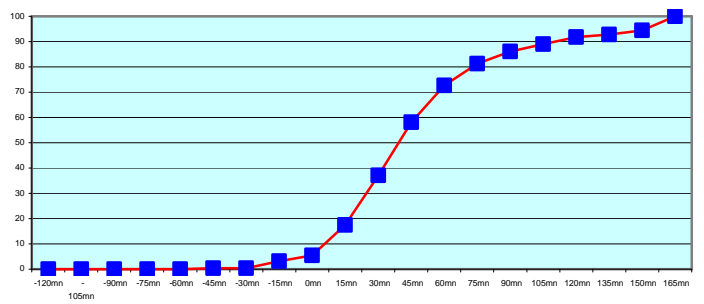
ASDE01 (1149 report parts) Offenbach 908 Exeter 4 Email 218 Telex 16 with supervision 3



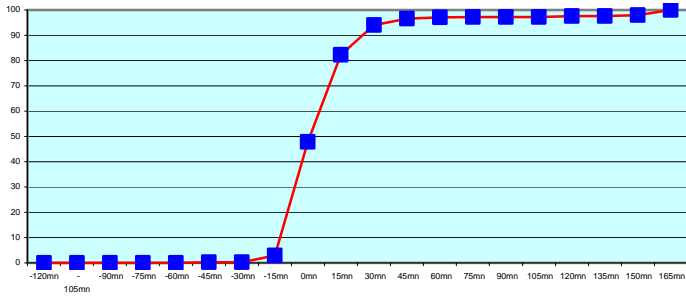
ASDE02 (841 report parts) Offenbach 841



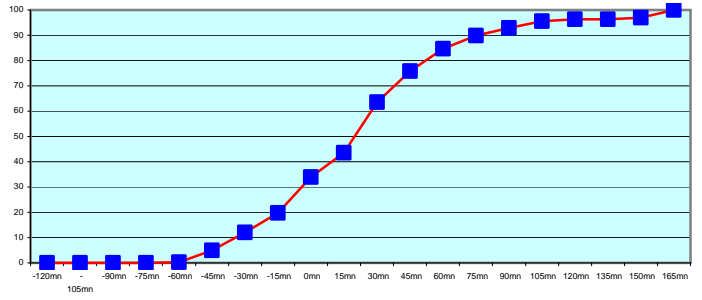
ASDE03 (1172 report parts) Offenbach 903 Email 249 Telex 20



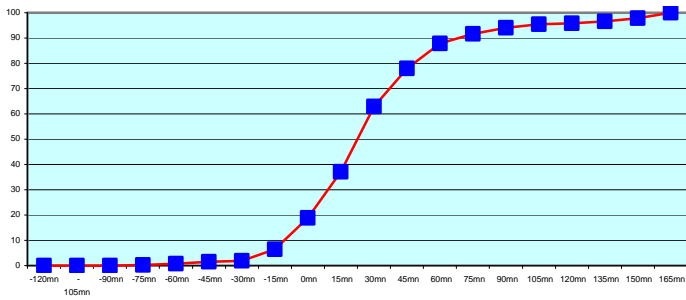
ASDE04 (1353 report parts) Offenbach 1320 Email 27 Telex 6



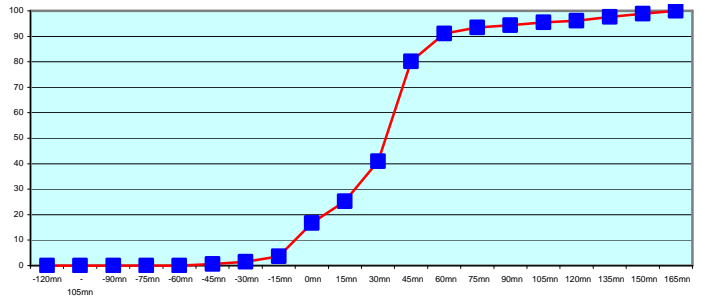
ASGB01 (811 report parts) Offenbach 711 Email 82 Telex 19



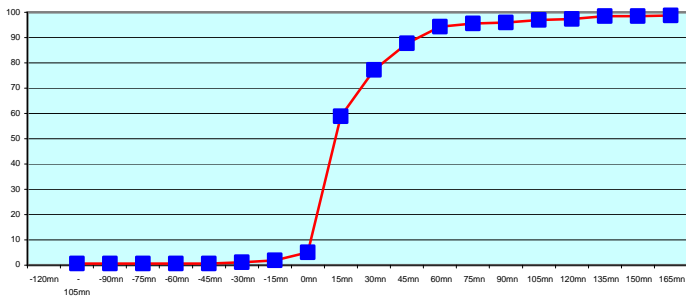
ASDK01 (2009 report parts) Offenbach 933 Exeter 1076



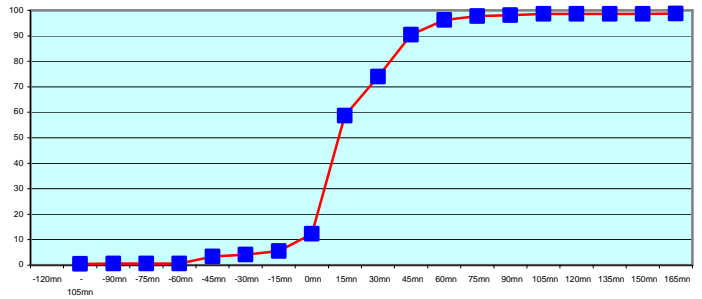
ASDK02 (935 report parts) Offenbach 669 Exeter 266



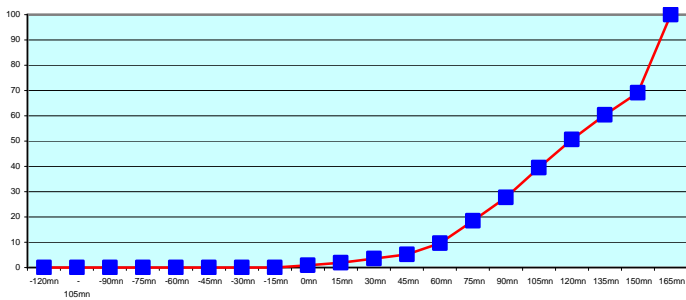
ASFR1 (1073 report parts) Email 1023 Telex 45 with supervision 5



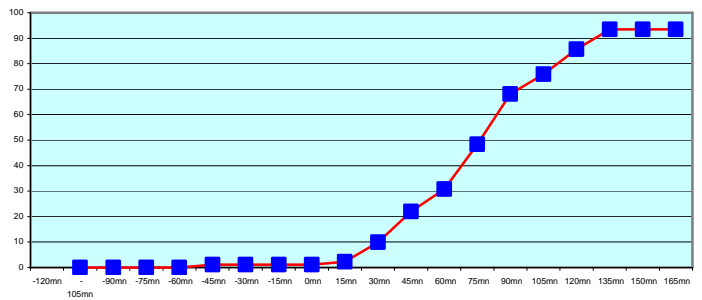
ASFR2 (914 report parts) Email 862 Telex 46 with supervision 6

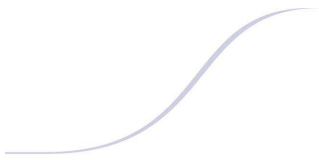


ASES01 (537 report parts) Exeter 491 Email 42 Telex 4

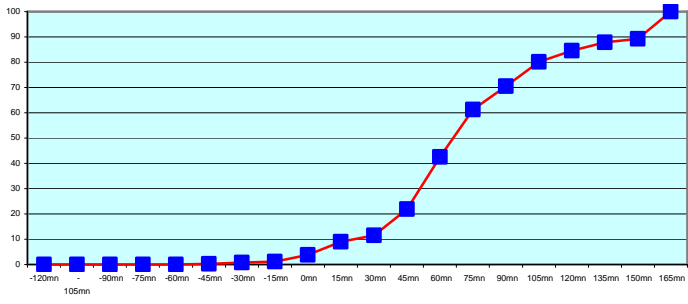


ASIS01 (91 report parts) Exeter 8 Email 82 with supervision 1

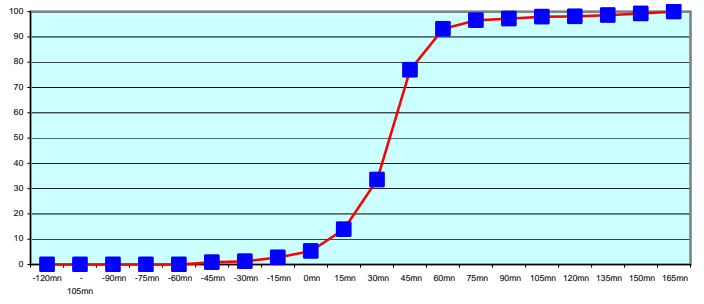




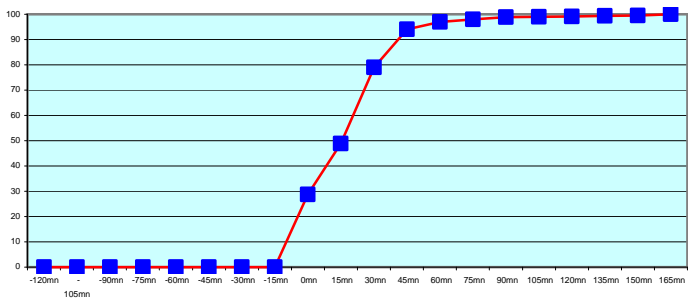
DBLK (1455 report parts) Offenbach 1455



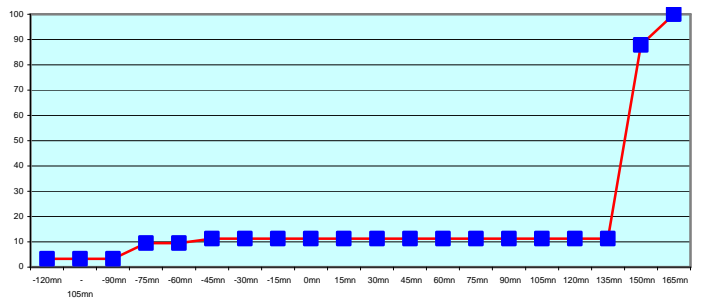
OXGNZ (644 report parts) Offenbach 642



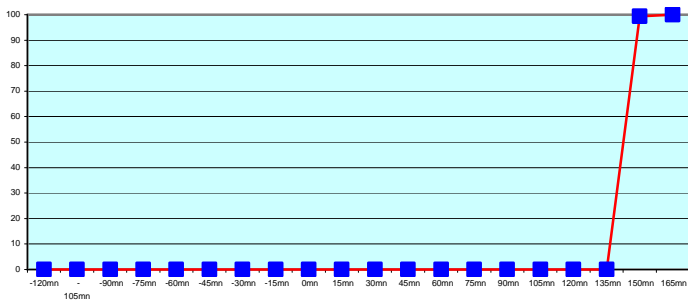
LDWR (4142 report parts) Offenbach 4142



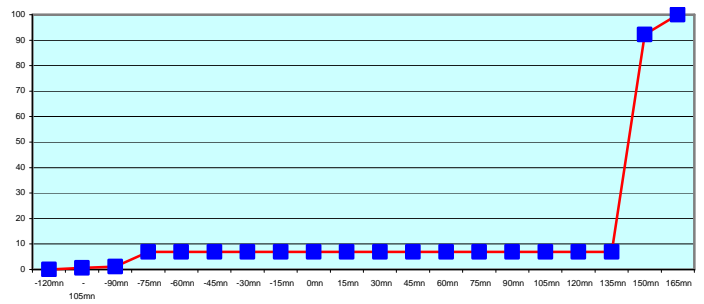
JCCX (339 report parts) Exeter 339



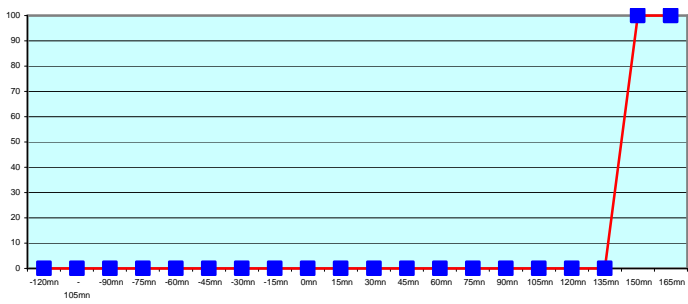
JGOH (467 report parts) Exeter 467



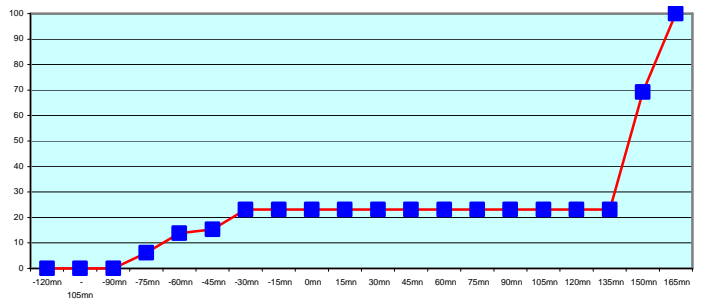
JVB (349 report parts) Exeter 349

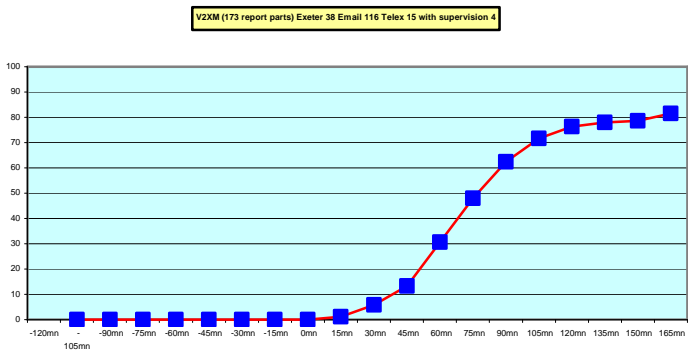
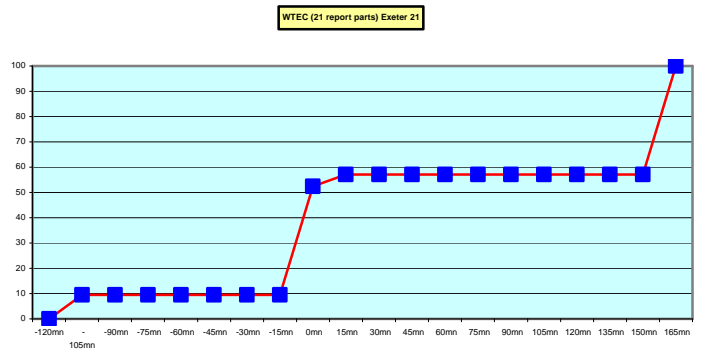
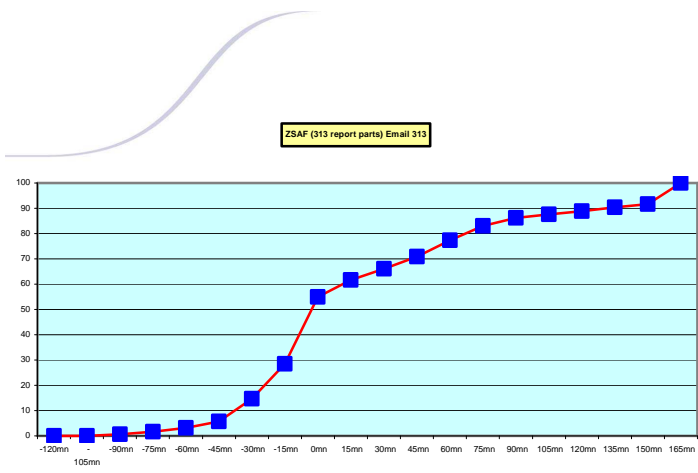


JDWX (203 report parts) Exeter 203



JNSR (65 report parts) Exeter 65





Most of the ships results are good. A few ship (ASES01, ASIS01, DBLK, WTEC and V2XM) display a large delay in message reception. ASDE02 and ZSAF improved their score during the last three months of 2007. Japanese ships seems to follow a different procedure with an important shift between the sending of the the message and the synoptic hour.

For any comment or remark please contact Météo-France Toulouse DSO/DOA department
 Gérard Rey (gerard.rey@meteo.fr)
 Daniel Bouchara (daniel.bouchara@meteo.fr)
 Hugues Jardat (hugues.jardat@meteo.fr)