

An aerial photograph of a tropical harbor. In the foreground, a large cargo ship with two yellow cranes is docked at a pier. A long pier extends into the turquoise water, lined with numerous small boats. In the middle ground, a large white cruise ship is visible. The background features a coastline with buildings and green hills under a blue sky with scattered clouds.

WMO

**Port Meteorological Officer's
Workshop**

IMO HQ 22 – 25 July 2003

United Kingdom Hydrographic Office

NAVTEX

Lt. Cdr. Chris Pink FNI

Secretary, IMO International NAVTEX
Co-ordinating Panel

United Kingdom Hydrographic Office

NAVTEX

An International Automated Direct-printing Service for the Promulgation of Navigational and **Meteorological Warnings** and Urgent Information to Ships

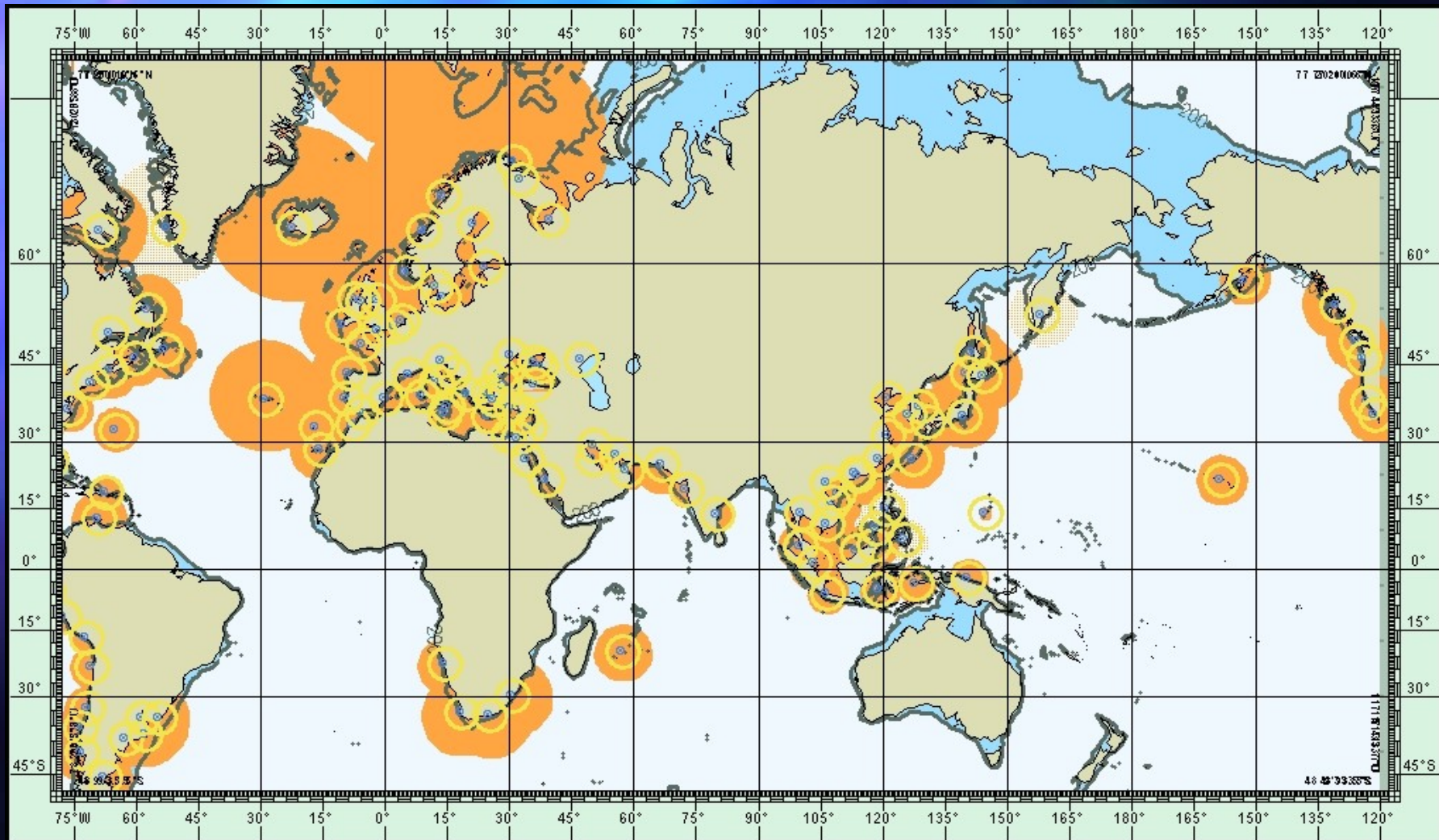


United Kingdom Hydrographic Office

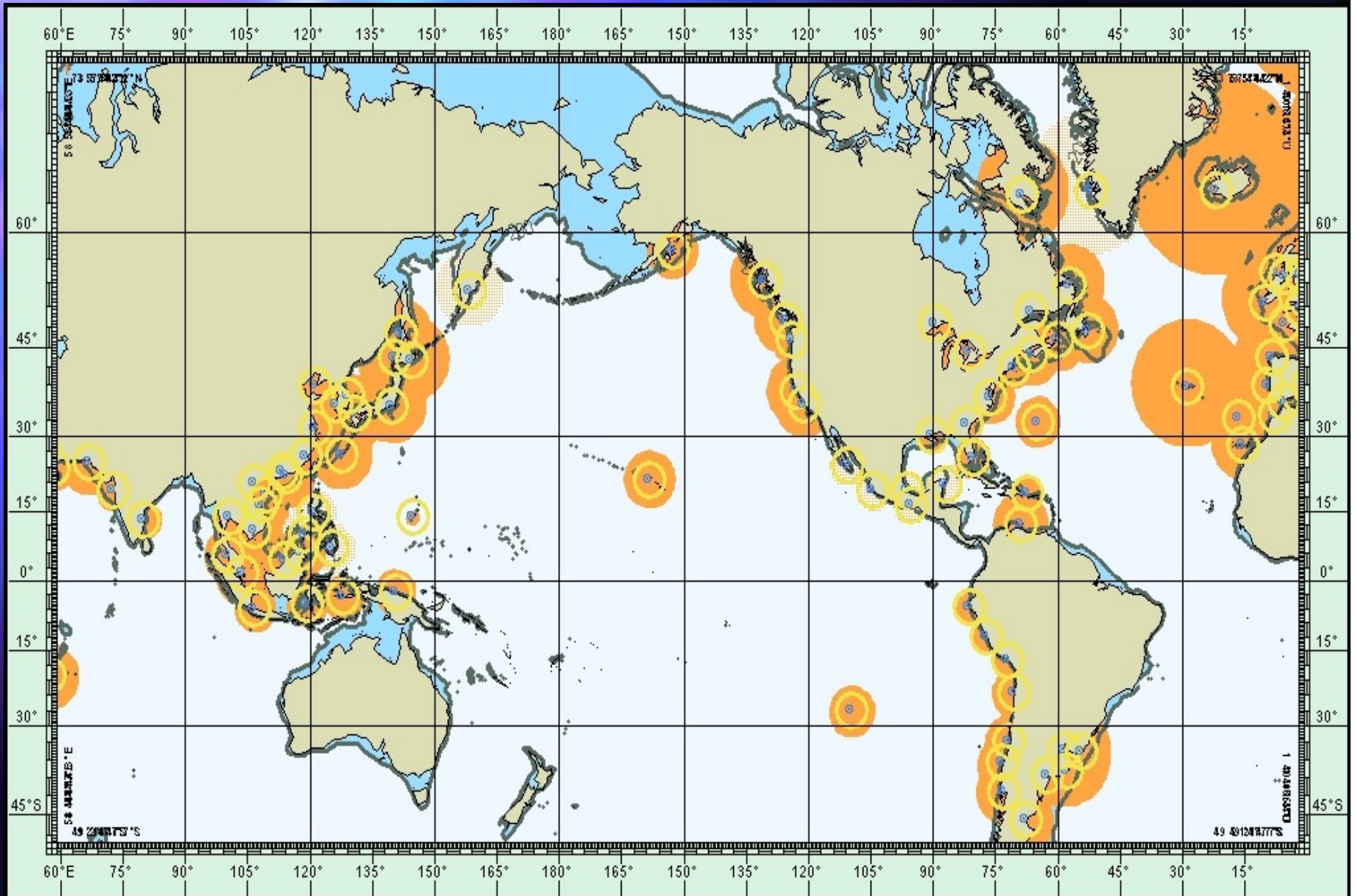
TYPES OF SERVICE

- **International NAVTEX service**
- **National NAVTEX service**

WorldWide NAVTEX Cover

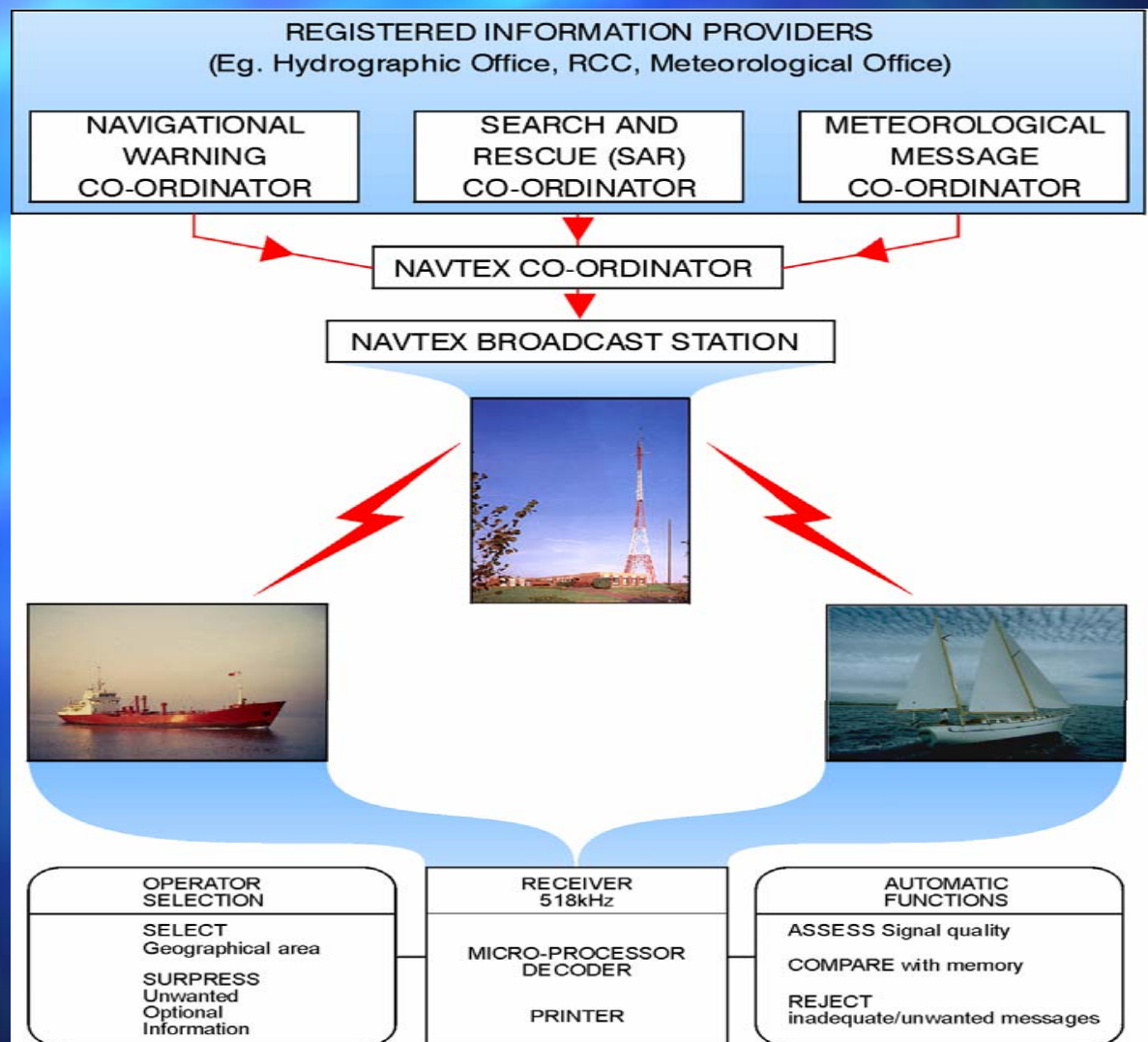


United Kingdom Hydrographic Office

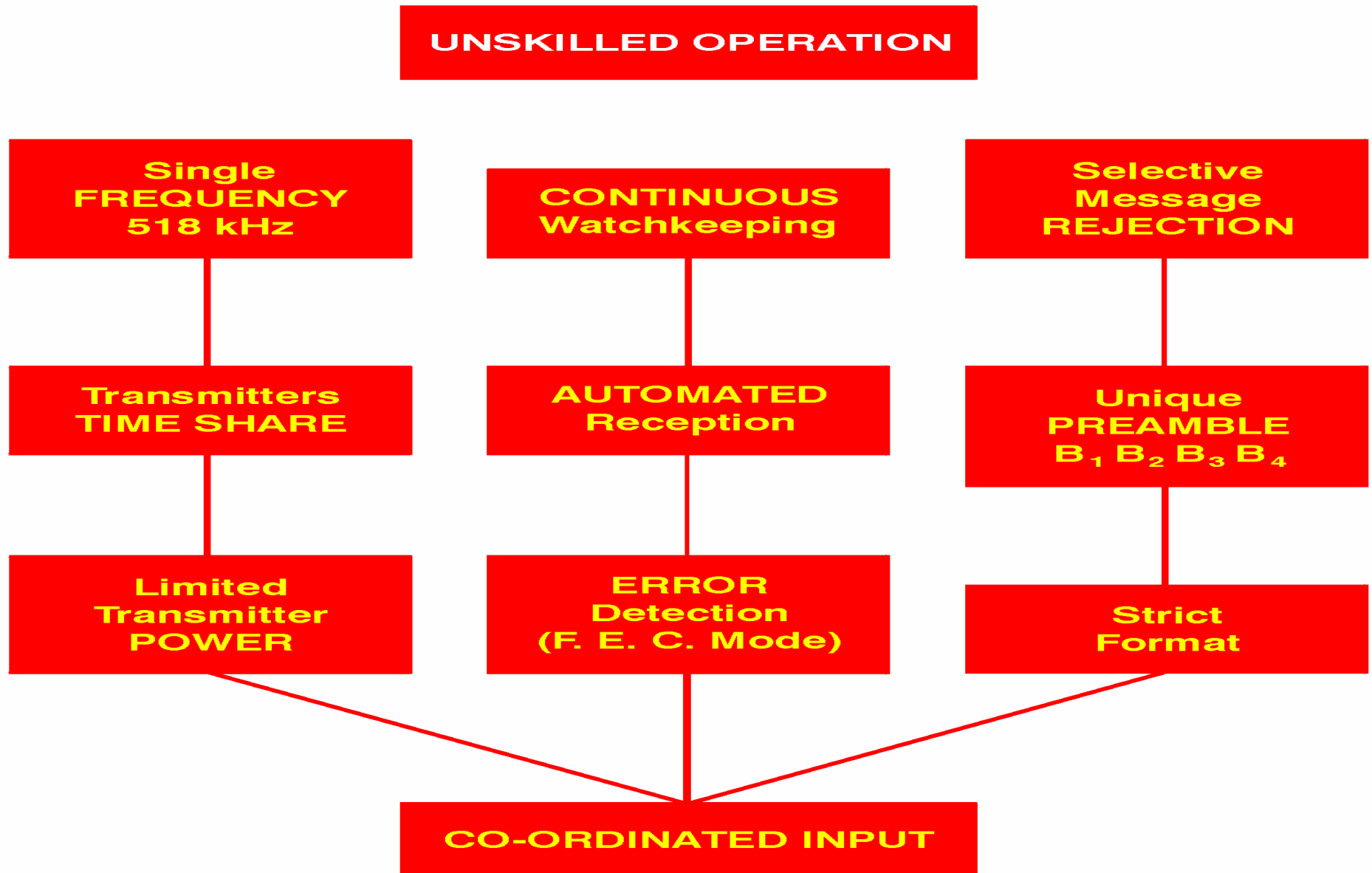


United Kingdom Hydrographic Office

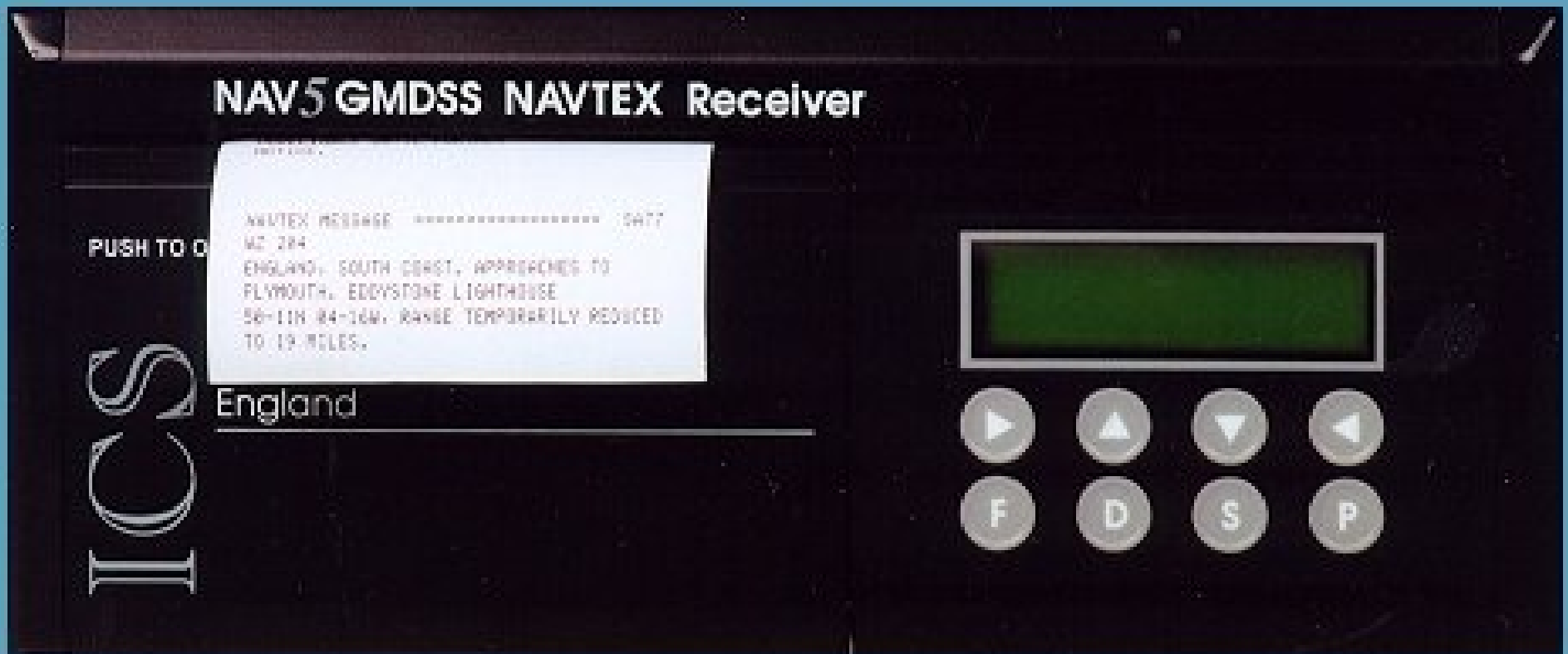
THE COMPLETE SYSTEM



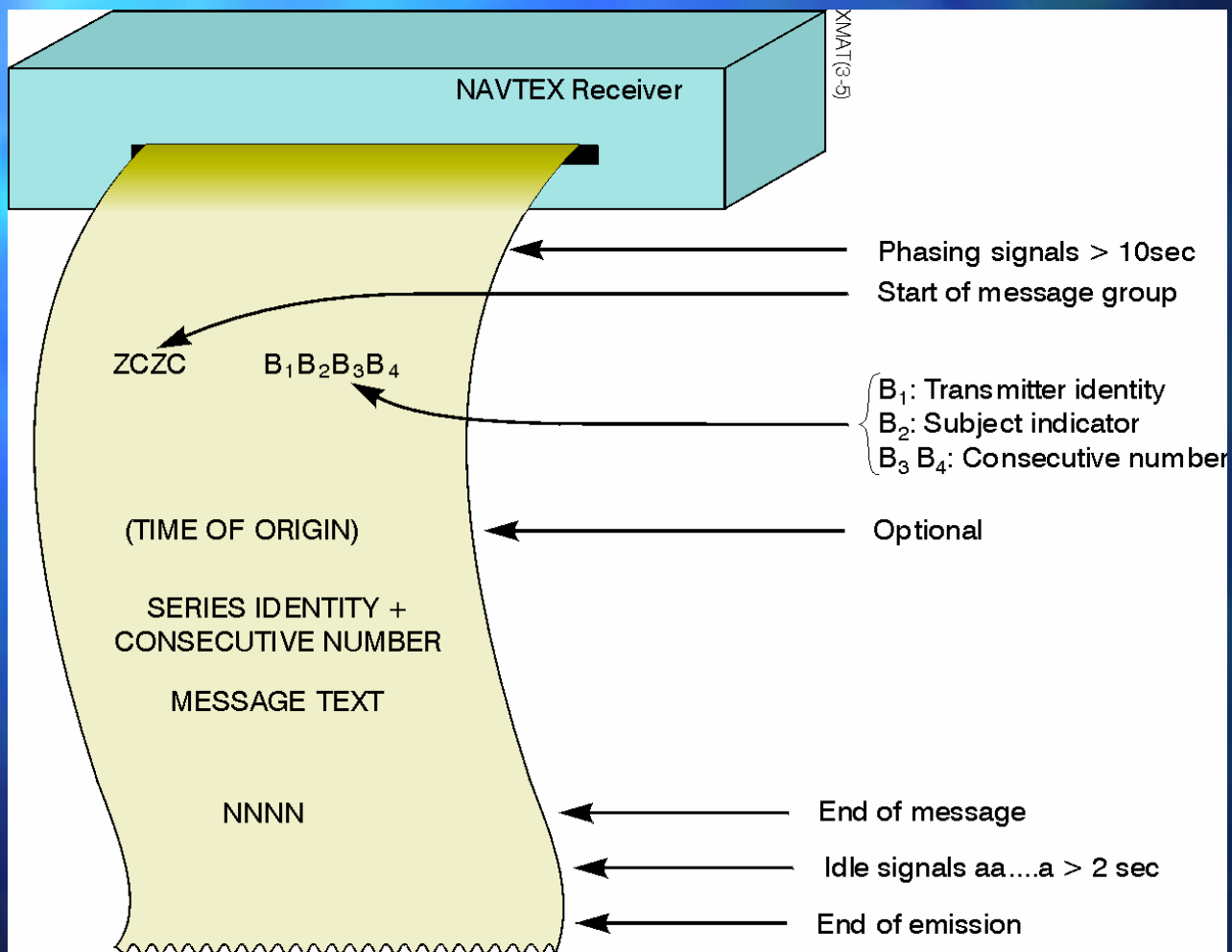
THE ESSENTIAL FEATURES OF NAVTEX



NAVTEX RECEIVER



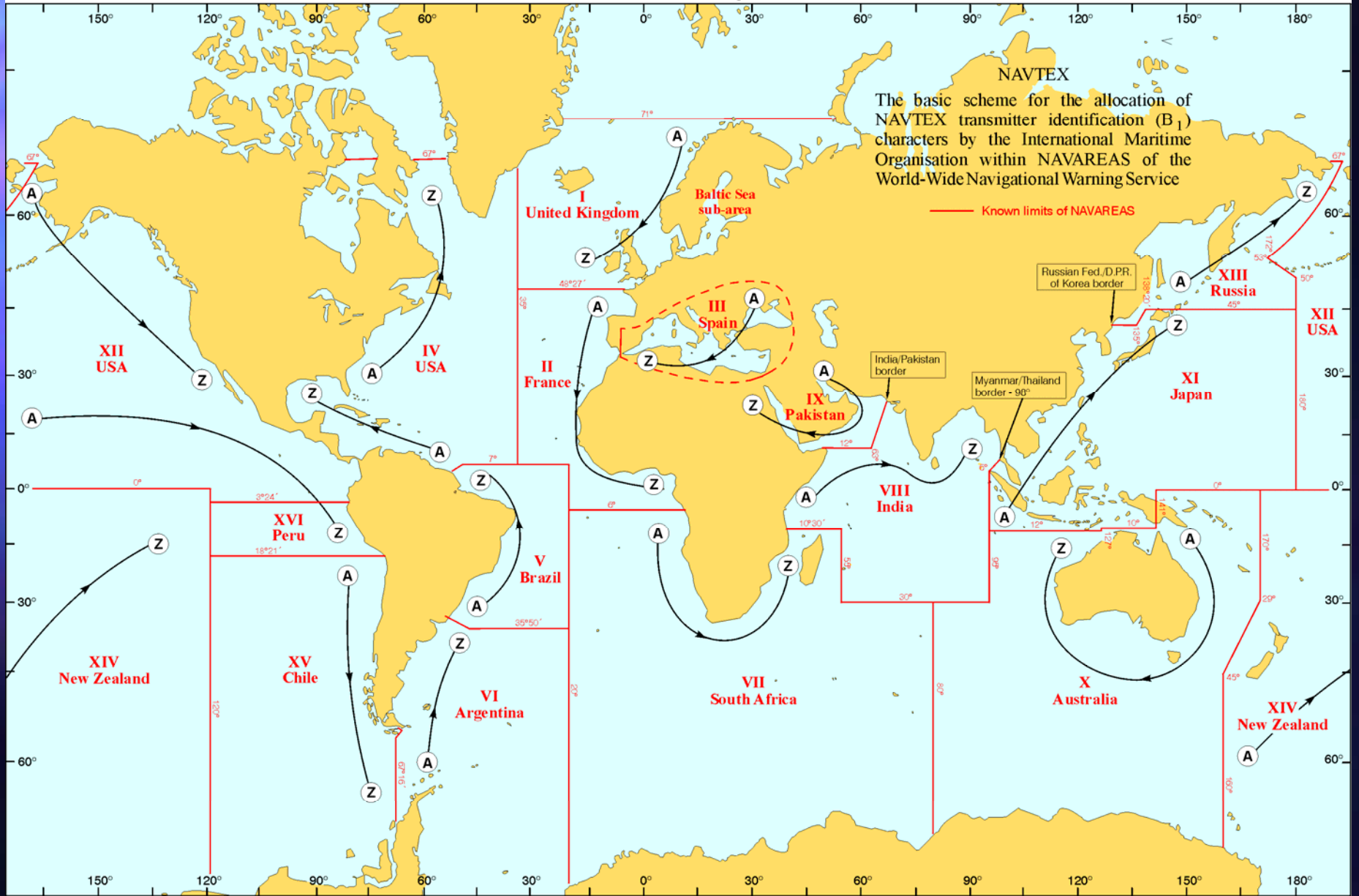
Message Format



NAVTEX Technical Code

- B_1 - transmitter identification character

NAVTEX - Allocation of B₁ characters



							TRANSMITTER IDENTIFICATION CHARACTERS (B ₁)																							
SCHEDULED TIMES (UTC)							GROUP 1			GROUP 2				GROUP 3					GROUP 4											
00	04	08	12	16	20		A	B	C	D	E	F	G	H	I	J	K	L	M	N	O	P	Q	R	S	T	U	V	W	X
.10	-	-	-	-	-		■																							
.20	-	-	-	-	-			■																						
.30	-	-	-	-	-				■																					
.40	-	-	-	-	-					■																				
.50	-	-	-	-	-						■																			
01	05	09	13	17	21							■																		
.10	-	-	-	-	-								■																	
.20	-	-	-	-	-									■																
.30	-	-	-	-	-										■															
.40	-	-	-	-	-											■														
.50	-	-	-	-	-												■													
02	06	10	14	18	22													■												
.10	-	-	-	-	-														■											
.20	-	-	-	-	-															■										
.30	-	-	-	-	-																■									
.40	-	-	-	-	-																	■								
.50	-	-	-	-	-																		■							
03	07	11	15	19	23																		■							
.10	-	-	-	-	-																			■						
.20	-	-	-	-	-																				■					
.30	-	-	-	-	-																					■				
.40	-	-	-	-	-																						■			
.50	-	-	-	-	-																							■		
04	08	12	16	20	24																								■	

NAVTEX Technical Code

- B_1 - transmitter identification character
- B_2 - subject indicator character

B₂ CHARACTERS

A = Navigational Warnings (cannot be rejected)

B = Meteorological Warnings (cannot be rejected)

C = Ice Reports

D = SAR information and Pirate Attack warnings (cannot be rejected)

E = Met Forecasts

F = Pilot Service Messages

G = available

H = LORAN Messages

I = available

J = SATNAV Messages

K = other Navaid messages

L = Navigational Warnings (continuation of A, should not be rejected)

V =)

W =) Special services - allocation by NAVTEX Panel

X =)

Y =)

Z = No Messages on hand

NAVTEX Technical Code

- B_1 - Transmitter Identification Character
- B_2 - Subject Indicator Character
- B_3B_4 - Message Numbering

B₃B₄ CHARACTERS

- Message numbers between 01 and 99
- 00, used with B₂ character D, for Initial Distress Messages **ONLY**

MESSAGE PRIORITIES

- VITAL
- IMPORTANT
- ROUTINE

CONTENT

- Area covered – coverage/service area



CONTENT

- Area covered – coverage/service area
- Brevity – formatted messages
- Time – 10 mins for all messages

SUMMARY

- Integral part of GMDSS/WWNWS
- Low cost, simple and automated
- Tailored broadcast

An aerial photograph of a tropical resort. In the foreground, a large marina is filled with numerous white sailboats docked at a pier. Behind the marina, several large, multi-story resort buildings with light-colored facades and terracotta roofs are arranged in a semi-circle. The resort is surrounded by lush greenery and palm trees. In the background, a turquoise bay with a white sandy beach is visible, with a small island in the distance. The sky is clear and blue. The text "THE END" is overlaid in the center of the image in a large, bold, red font with a black outline.

THE END

Are there any questions?

United Kingdom Hydrographic Office