

PMO

National Report



PMO Organization

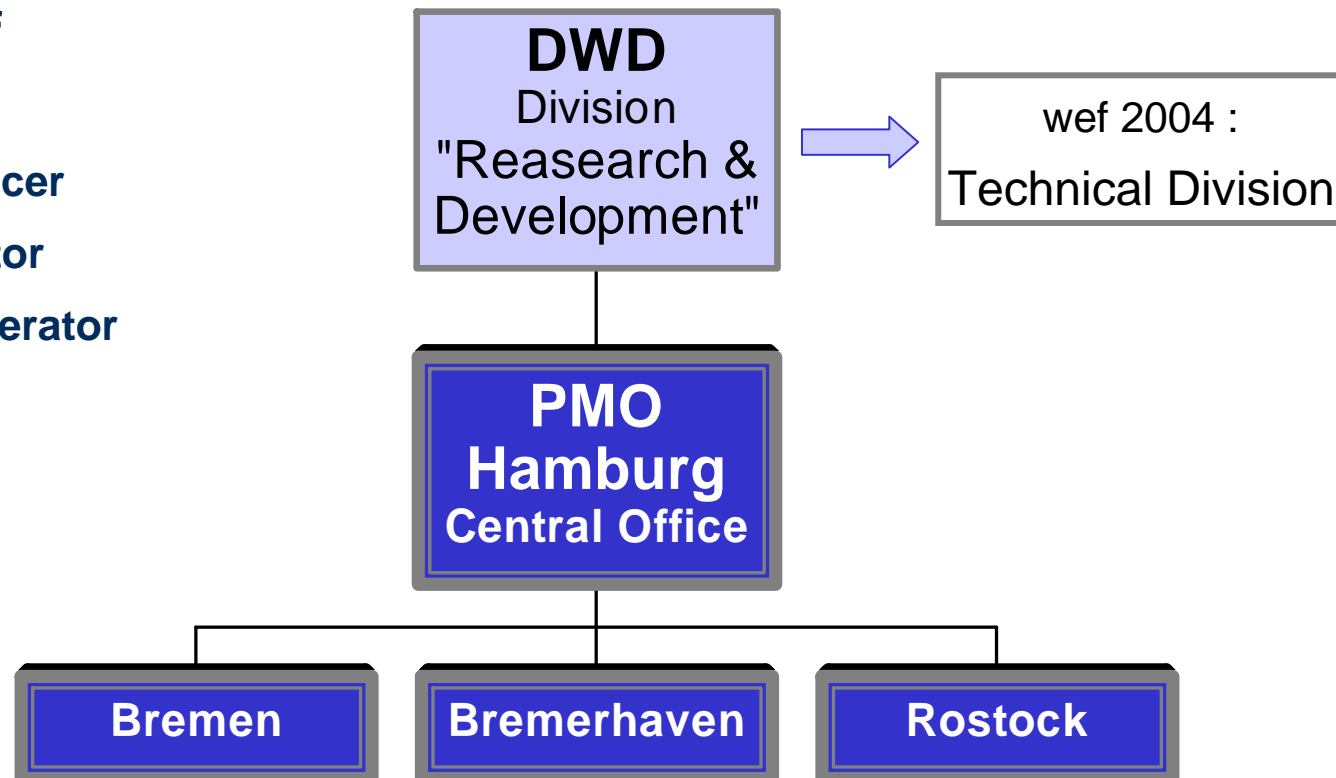
PMO - Staff

1 Advisor

6 Port Met. Officer

1 ASAP-Operator

2 Keying-In Operator



Deutscher Wetterdienst

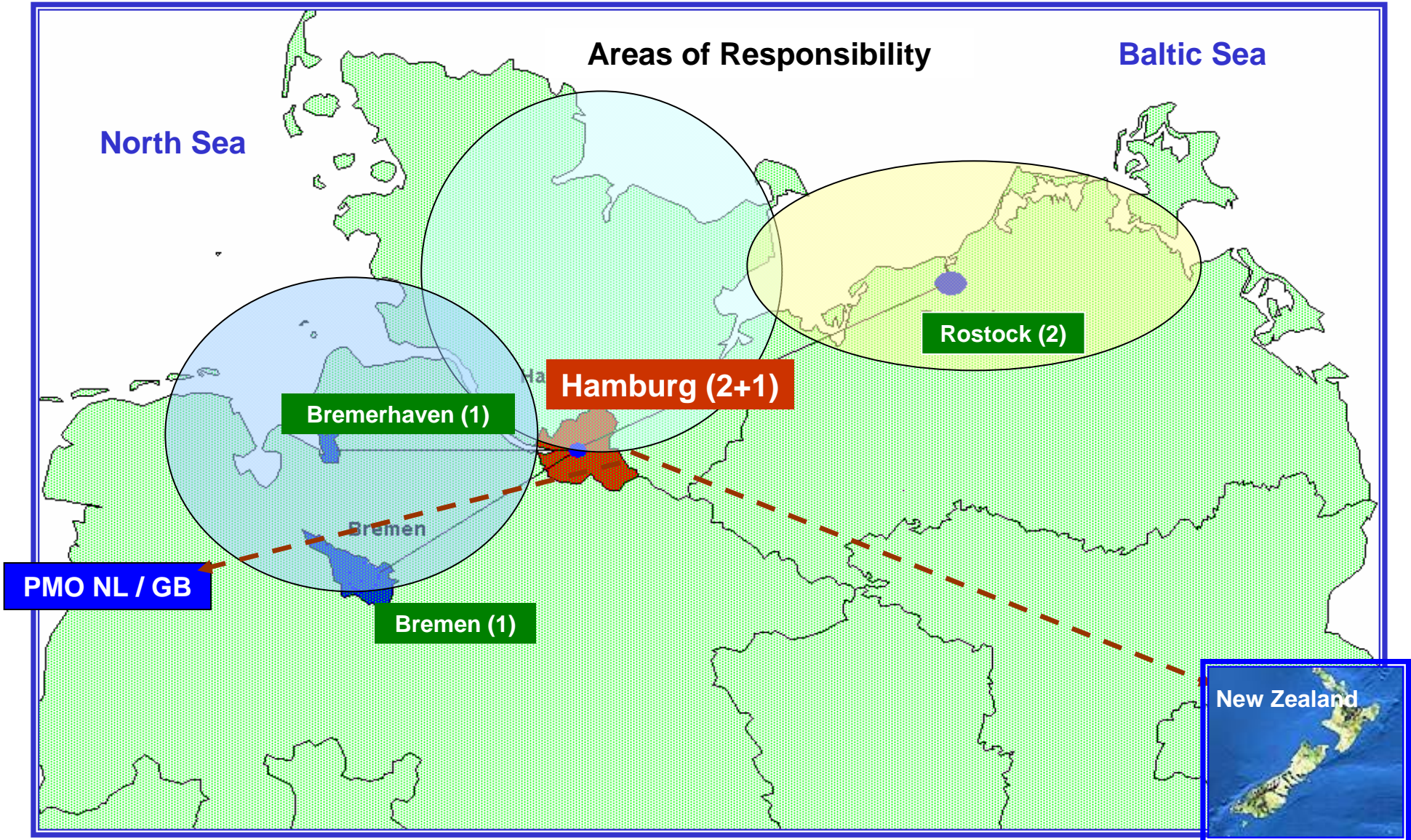
National Report



Areas of Responsibility

North Sea

Baltic Sea



Bremerhaven (1)

Hamburg (2+1)

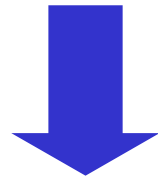
Rostock (2)

Bremen (1)

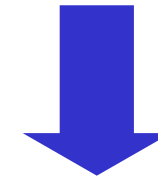
PMO NL / GB

New Zealand

Operational Tasks



VOS



ASAP

Automated Shipboard
Aeronautical Programme



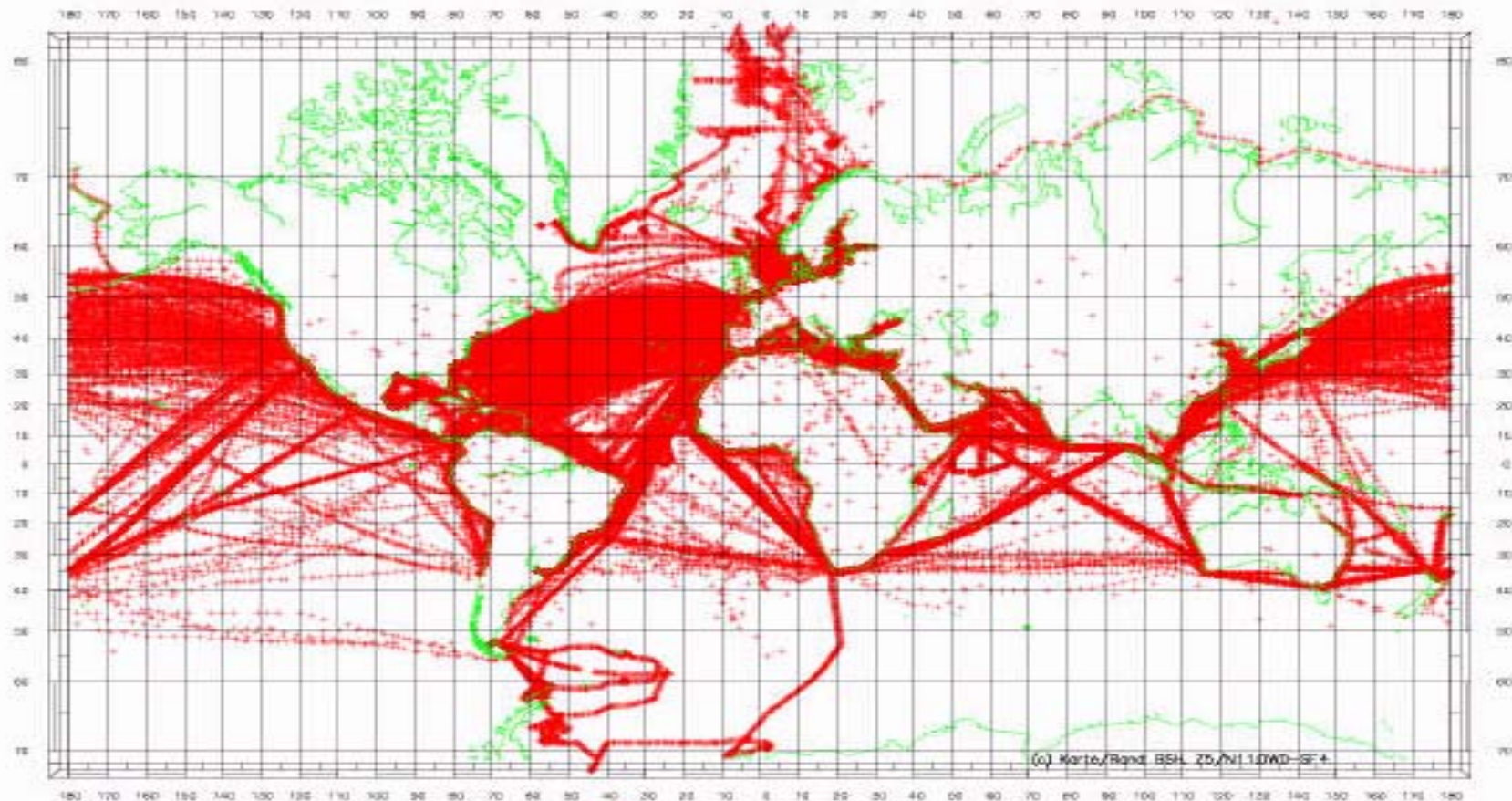
Status of Recruitment (December 2002: 813 ships)

- 716 Selected Ships
- 25 Supplementary Ships
- 49 Auxiliay Ships
- 23 Automated Ships

Problem: 20%-30% make observations very rarely

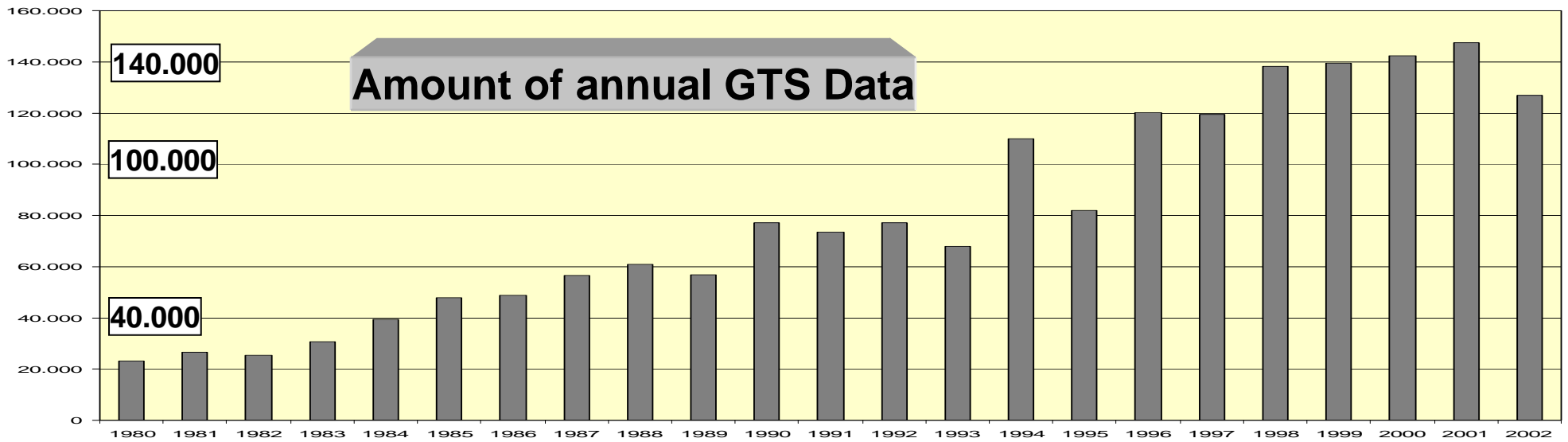
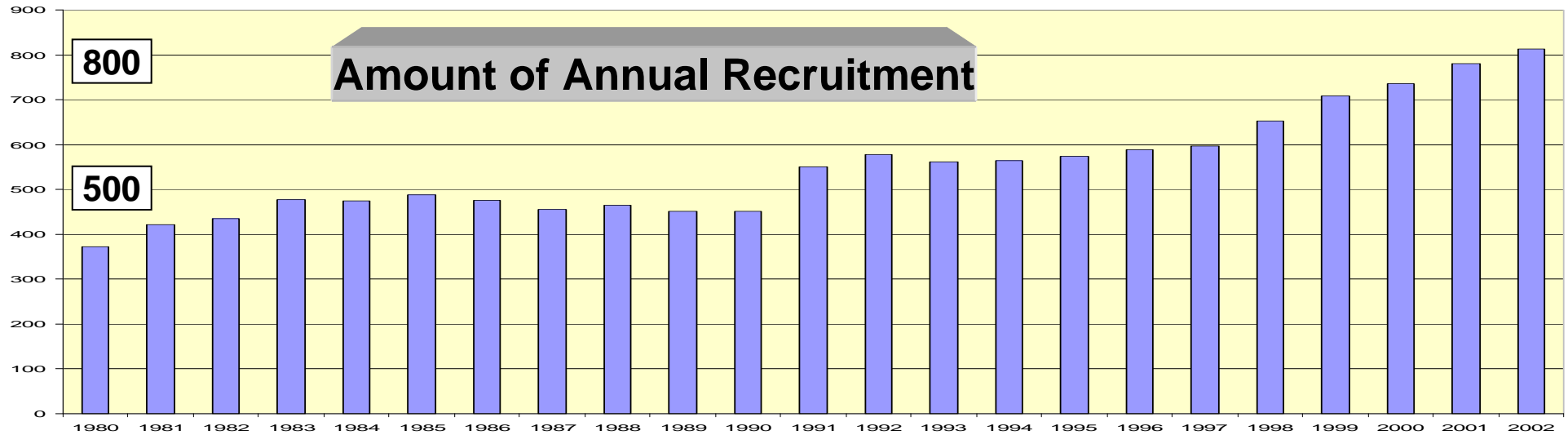
Routes of German Ships

(Density of all observations in 2002)



Deutscher Wetterdienst

National Report





Notebook - Equipment

Delivery of **300** low-budget notebooks in 1998-1999

Benefit:

More interest in participating VOS

Increasing number of real-time data

Better quality of observations (Turbo1, TurboWin)

Problem:

Increasing technical support

Budget uncertainty in case of replacement

Goal:

400 Notebooks with TurboWin

VOSCLim - Engagement

10 vessels are recruited

4 candidates (next months)

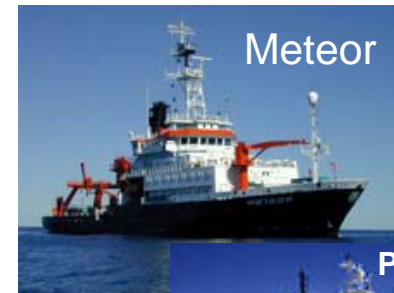


Our selection based upon following criteria:

- **scheduled calls at German ports**
- **high observation quality in the past**
- **interested observers, willing to collect additional information**



Selected VOSCLim Ships



(Candidates)





Award System

The system is based on the number of observations in relation to the time of cooperation with DWD

Observer:

- 1 point for each observation
- time points for each voyage, calculated in 1/10 month of the observation period

Master:

- 1/2 point for each observation under his command & time points

Ship:

- 1.000 obse / 5.000 obse at least

Awards



Medal spent by the
Secretary of Traffic

ASAP - Engagement



Germany operates 4 ASAP-Systems on following vessels:

- ➡ „**HORN**BAY“ on the Carribean route*
- ➡ „**SL DEVELOPER**“ to east coast of the USA*
- ➡ „**SL MOTIVATOR**“ to east coast of the USA (autumn 2003)*
- ➡ R V „**METEOR**“ on various routes



The PMO staff Hamburg contributes manpower
&
technical knowhow

* The red coloured systems will be fully integrated into EUMETNET-ASAP in 2007



Problems

Problem: Administration and Support

Action: Reducing the number of ships, that do not make observations

Problem: Recover of equipment from withdrawn ships

Action: Enhanced PMO cooperation in the case of „lost“ ships

Problem: Lack of GTS obse via Globe Wireless

Action: Contact a competent authority in this case

Problem: Decreasing interest in observations on board

Action: More effort to motivate observers - optimize the award system



Thank you for your interest!