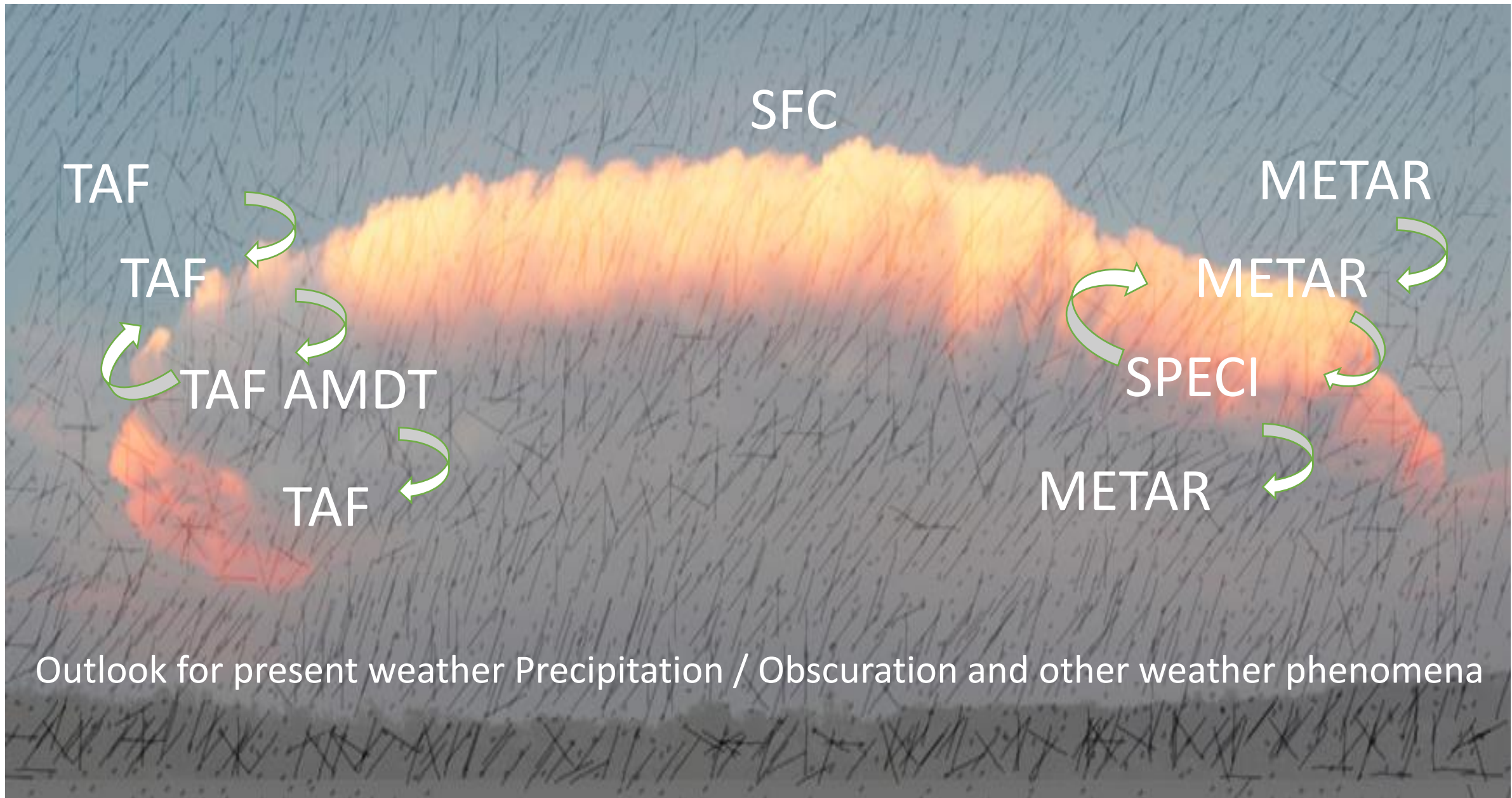


BACK TO THE FUTURE





SFC

TAF

TAF

TAF AMDT

TAF

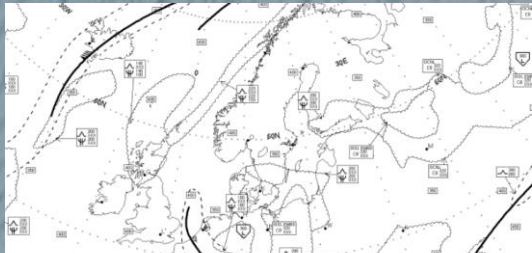
METAR

METAR

SPECI

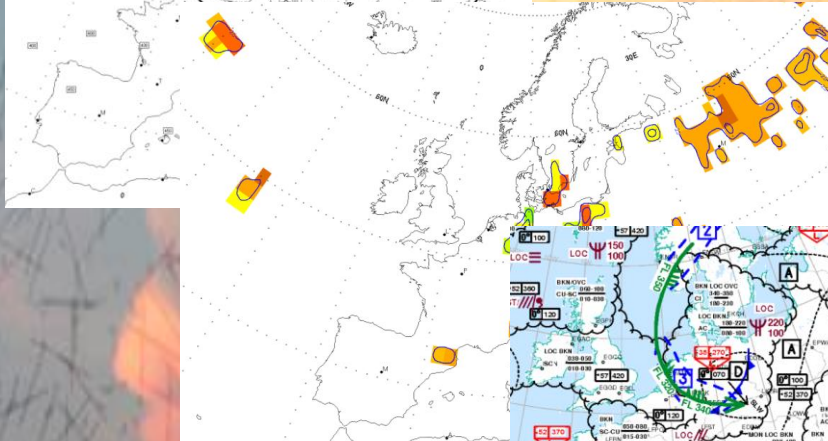
METAR

Outlook for present weather Precipitation / Obscuration and other weather phenomena

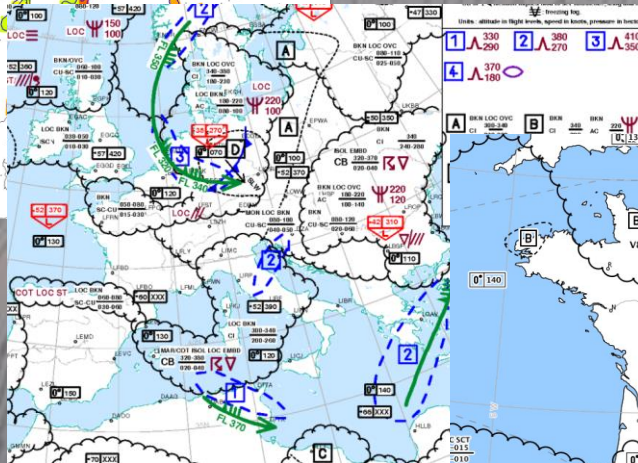


SIGWX

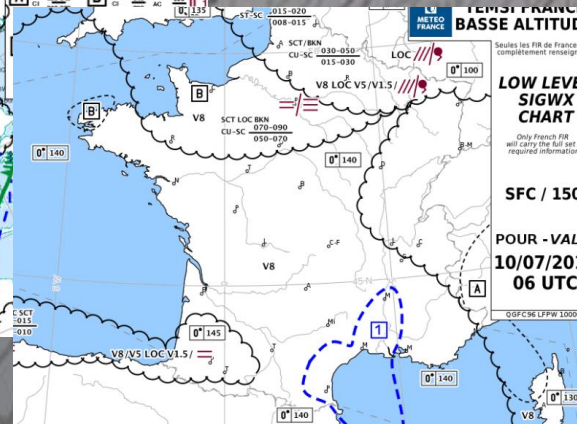
ALT



CB TOPS EXTENT



EUROC



LOW LVL

▼ Tactical update

General:

CB and thunderstorm activity in Maastricht, Germany and France resulting in many high delay regulations in which improvements are hardly possible.

Airports:

No issues.

Airspace:

The regulations in French airspace are saturated, and delays are VERY HIGH. There is no real possibilities for manual interventions in weather regulations causing up to 5 hours delay per flight. Apologies, but we are not in the situation where we can provide the necessary aid to the airlines tonight.

NMOC Brussels

- 3 ▶ AO requests on helpdesk
- 34 ▶ INP (Initial Network Plan)
- 35 ▶ Release NM 22.0 New information for FMP and ANSP.
- 56 ▶ Tripoli ACC in contingency Ops
- 21 ▶ RRP function limitation

02/07/2018 09:42

Airspace:

LFFF (Paris)

Several sectors regulated due to weather (Cb).
High delays

EGTT (London)

Several sectors regulated due to special event (EXCDS)
Moderate to high delays.

EDUU (Karlsruhe)

Several sectors regulated due to ATC capacity.
Low to moderate delays.

LFRR (Brest)

Several sectors regulated due to weather - CB's
Moderate to high delays.

LYBA (Belgrade)

Several sectors regulated due to weather - CB's
Moderate delays.

LFMM (Marseille)

Several sectors regulated due to ATC capacity/ Staffing.
Moderate to high delays.

LFEE (Reims)

Several sectors are regulated due to ATC capacity.
Moderate to high delays.

LDZO (Zagreb)

West and Central high combined sector regulated due to ATC capacity.
Moderate delays.

LHCC (Hungary)

Several sectors are regulated due to ATC capacity.
Low to moderate delays.

-TITLE SRM
-ARCID SAS6027
-IFPLID AA03216452
-ADEP ESMS
-ADES LEMG
-EOBD 180704
-EOBT 1930
-NEWCTOT 2112
-REGUL YBEST04
-REGUL RESTU04
-REGUL BUNOR04
-REGUL BUSUD04
-TTO -PTID NVO
-TAXITIME 0010
-REGCAUSE WE 81

-TITLE SRM
-ARCID SAS6027
-IFPLID AA03216452
-ADEP ESMS
-ADES LEMG
-EOBD 180704
-EOBT 1930
-NEWCTOT 2112
-REGUL YBEST04
-REGUL RESTU04
-REGUL BUNOR04
-REGUL BUSUC
-TTO -PTID NV
-TAXITIME 001
-REGCAUSE WI

-TITLE SRM
-ARCID SAS6027
-IFPLID AA03216452
-ADEP ESMS
-ADES LEMG
-EOBD 180704
-EOBT 1930
-NEWCTOT 2225
-REGUL BUNOR04
-REGUL YBALL04
-REGUL EURMN04
-REGUL REST04
-REGUL BUSUD04
-TTO -PTID DISAK -TO 0000 -FL F390
-TAXITIME 0010
-REGCAUSE WE 81

07:02PM

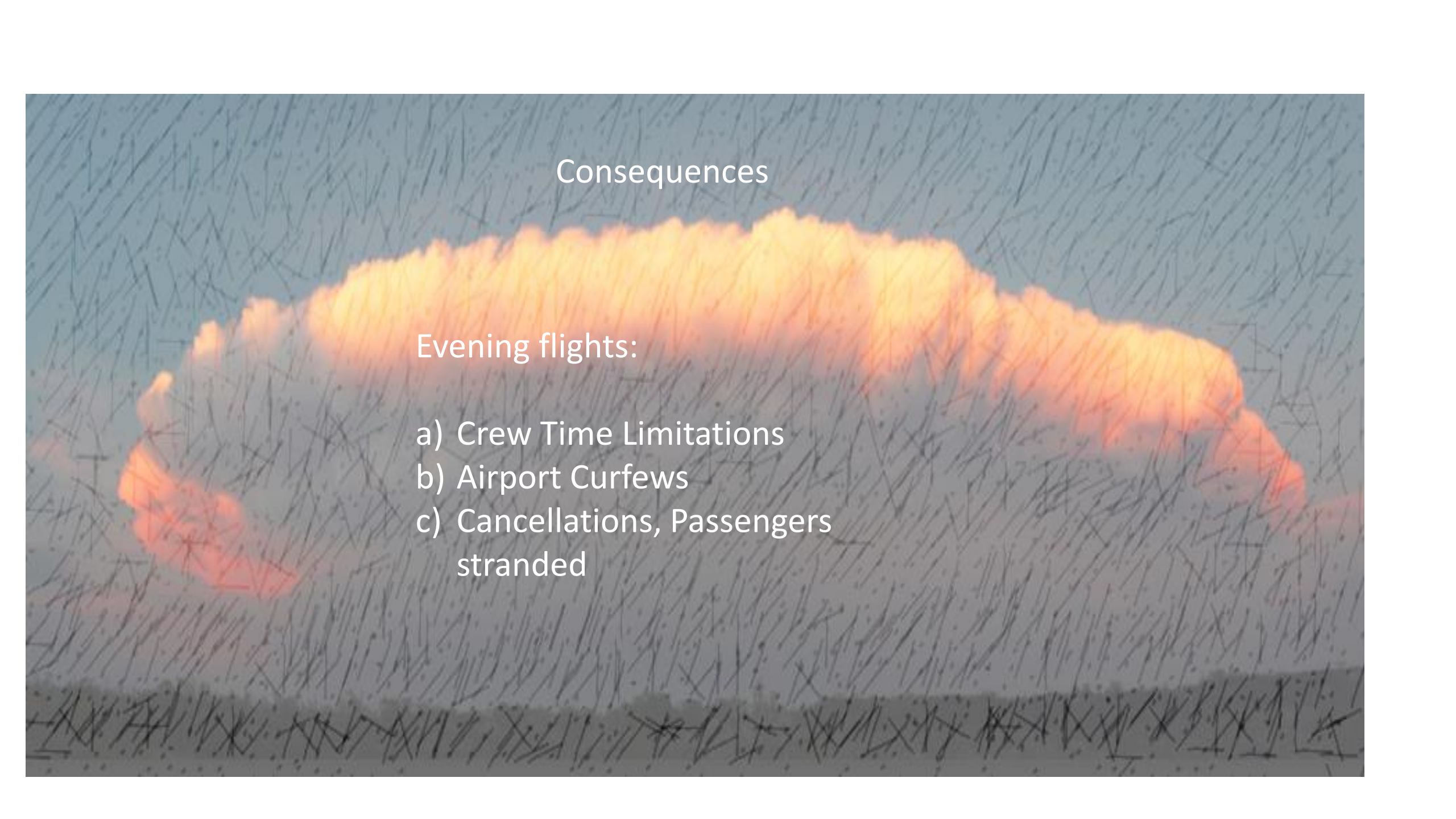
07:02PM

... 22 SRMs

09:30PM

11:04PM

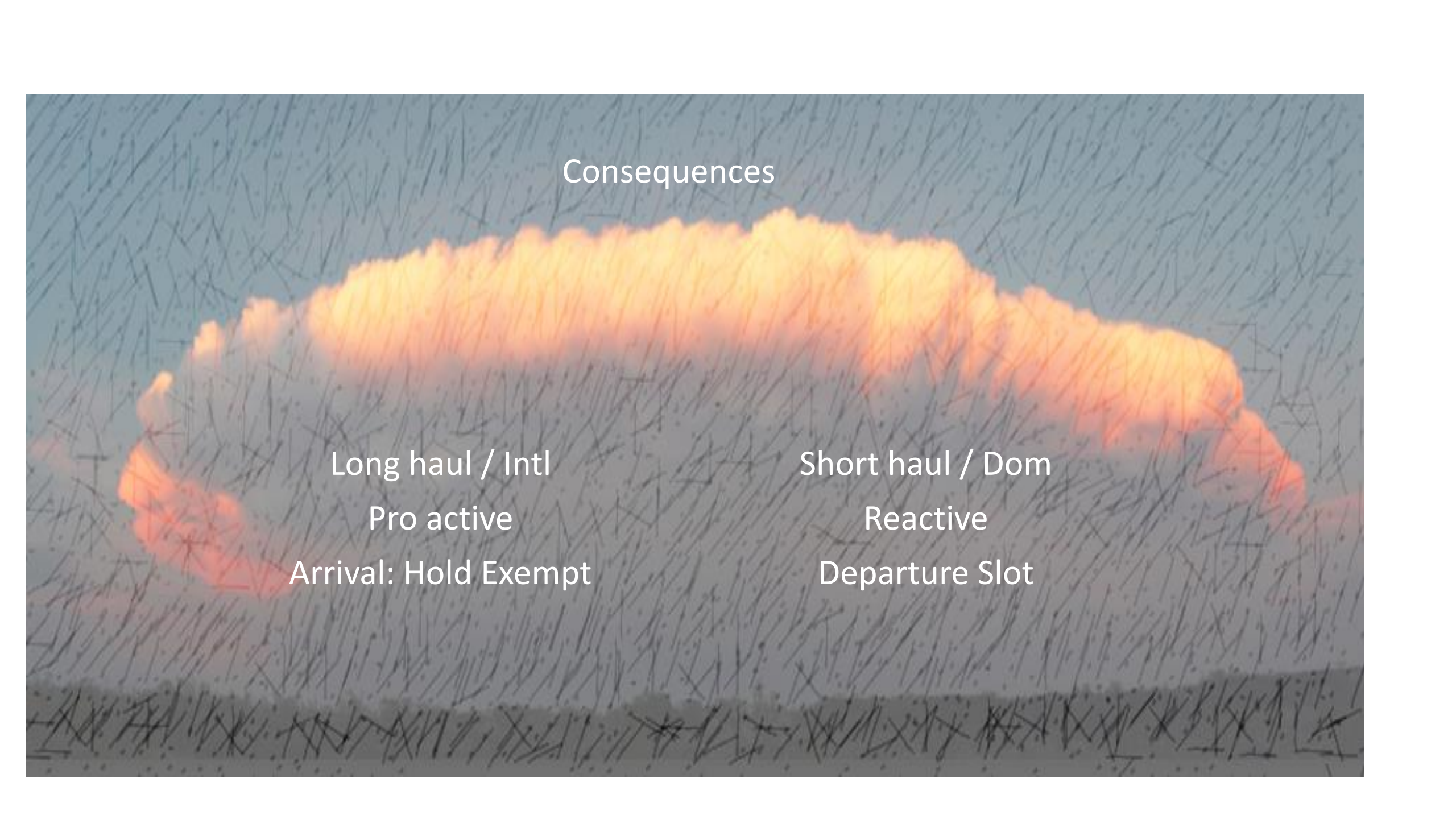
-REGUL BUNOR04
-REGUL YBALL04
-REGUL EURMN04
-REGUL BUSUD04
-TTO -PTID DISAK -TO 0024 -FL F390
-TAXITIME 0010
-REGCAUSE WE 81



Consequences

Evening flights:

- a) Crew Time Limitations
- b) Airport Curfews
- c) Cancellations, Passengers stranded



Consequences

Long haul / Intl

Pro active

Arrival: Hold Exempt

Short haul / Dom

Reactive

Departure Slot



Efficient recovery plan / recovery management

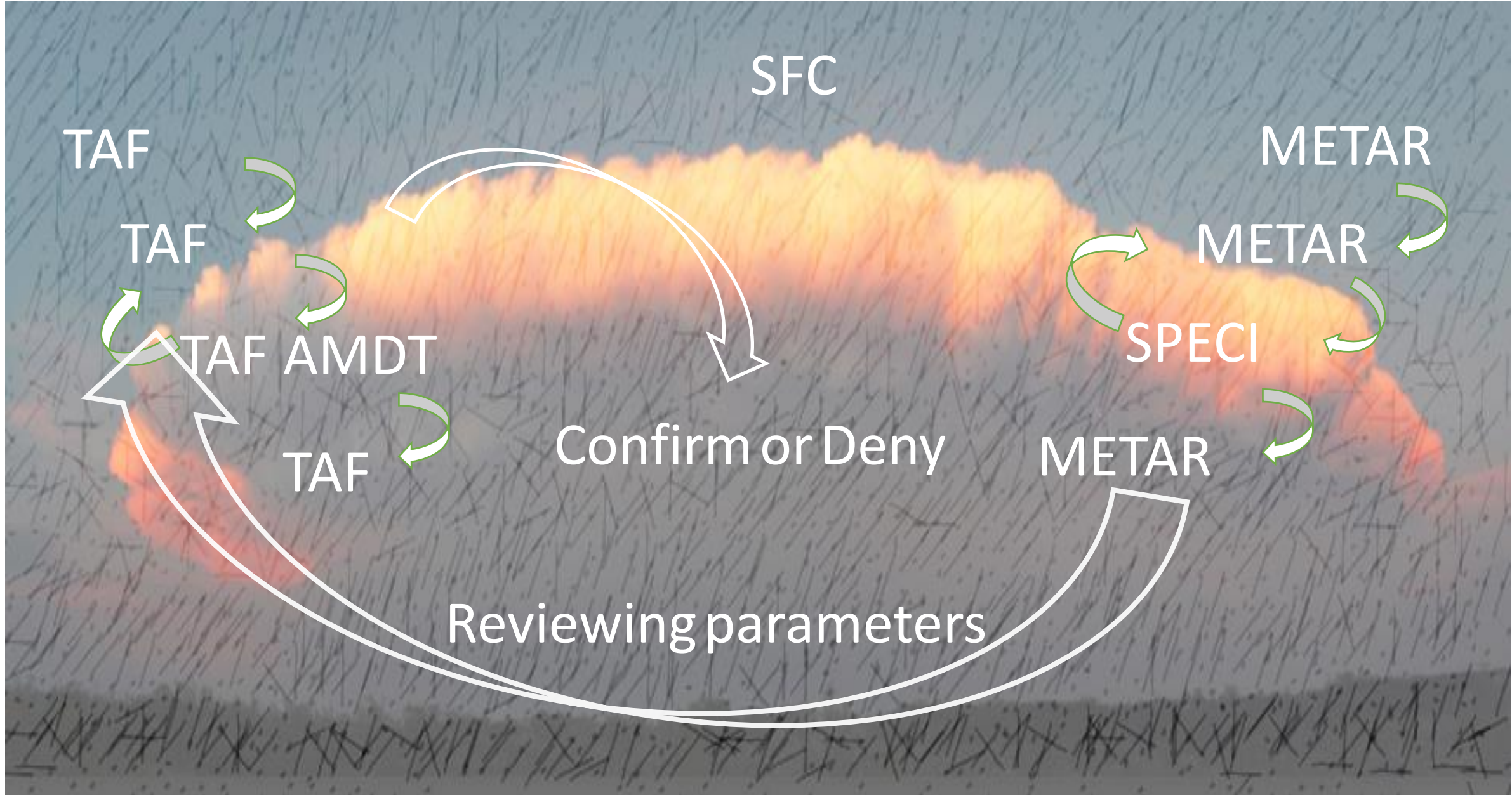
Suggestions:

Revisit elements used for forecast

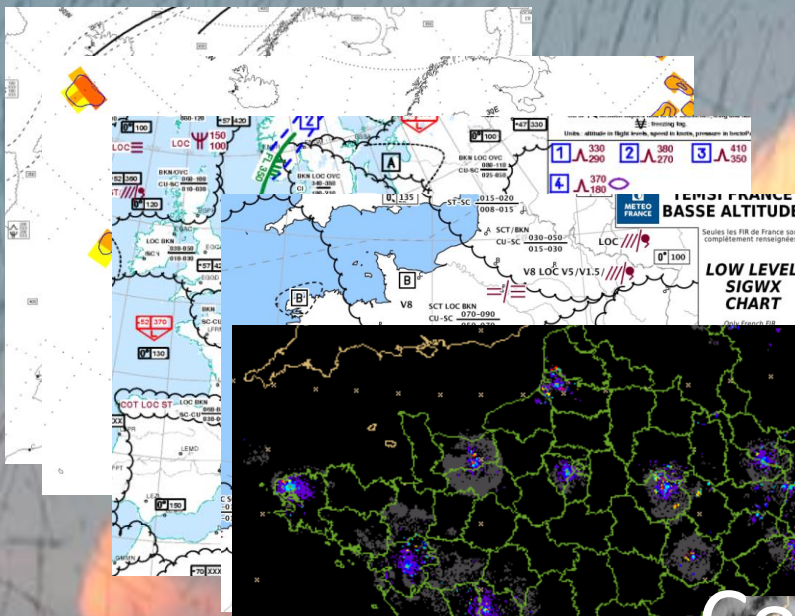
PIREPs Confirm or deny presence of hazard

Highlight improvement amendments

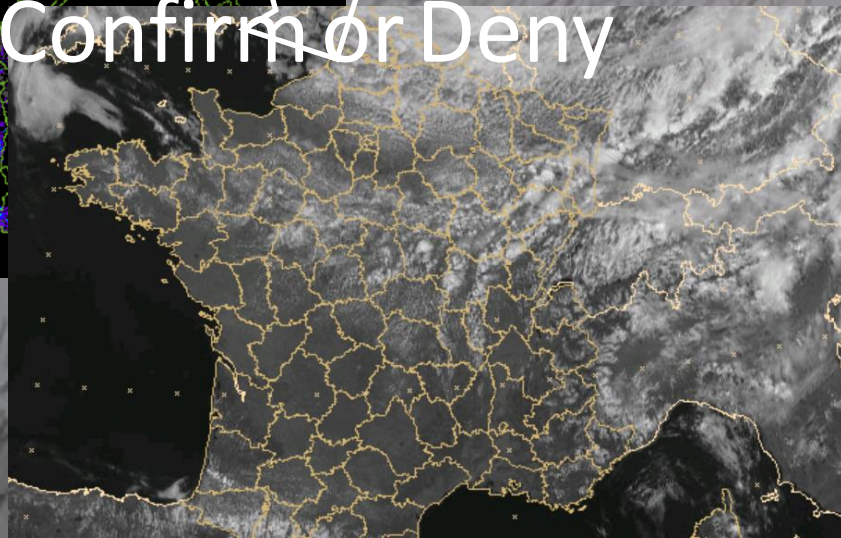
Met Centres / ATM Hazard identification coordination



ALT



Confirm or Deny



- PIREPS to confirm or deny
- CBs, TS
- Turb
- Icing
- Winds (3000ft)
- MET to check
- as with VA

A photograph of a sunset over a body of water. A large, horizontal, glowing orange and yellow cloud formation dominates the center of the image. The sky is a deep blue-grey, and the water in the foreground is dark and calm. The text "THANK YOU" is centered in the lower half of the image.

THANK YOU